

## Product datasheet for **RC213976**

### **Glyt1 (SLC6A9) (NM\_001024845) Human Tagged ORF Clone**

#### **Product data:**

Product Type:	Expression Plasmids
Product Name:	Glyt1 (SLC6A9) (NM_001024845) Human Tagged ORF Clone
Tag:	Myc-DDK
Symbol:	Glyt1
Synonyms:	GCENSG; GLYT1
Mammalian Cell Selection:	Neomycin
Vector:	pCMV6-Entry (PS100001)
E. coli Selection:	Kanamycin (25 ug/mL)



[View online »](#)

**ORF Nucleotide Sequence:**

>RC213976 representing NM\_001024845  
 Red=Cloning site Blue=ORF Green=Tags(s)

TTTTGTAATACGACTCACTATAGGGCGGCCGGAATTCGTCGACTGGATCCGGTACCGAGGAGATCTGCC  
 GCC**CGGATCGCC**

ATGGTAGGAAAAGGTGCCAAAGGGATGCTGAATGGTGCTGTGCCAGCGAGGCCACCAAGAGGGACCAGA  
 ACCTCAAACGGGGCAACTGGGGCAACCAGATCGAGTTTGTACTGACGAGCGTGGGCTATGCCGTGGGCT  
 GGGCAATGTCTGGCGCTCCCATACCTCTGCTATCGCAACGGGGAGGCGCCTTCATGTTCCCTACTTC  
 ATCATGCTCATCTTCTGCGGGATCCCCCTCTTCTCATGGAGCTCTCCTTCGGCCAGTTTGAAGCCAGG  
 GGTGCCTGGGGTCTGGAGGATCAGCCCCATGTTCAAAGGAGTGGGCTATGGTATGATGGTGGTCCAC  
 CTACATCGGCATCTACTACAATGTGGTCATCTGCATCGCCTTCTACTACTTCTTCTCGTCCATGACGCAC  
 GTGCTGCCCTGGGCTACTGCAATAACCCCTGGAACACGCATGACTGCGCCGGTGTACTGGACGCCTCCA  
 ACCTACCAATGGCTCTCGGCCAGCCGCTTGCCAGCAACCTCTCCACCTGCTCAACCACAGCCTCCA  
 GAGGACCAGCCCAGCGAGGAGTACTGGAGGCTGTACGTCTGAAGCTGTGAGATGACATTGGGAACTTT  
 GGGGAGGTGCGGCTGCCCTCCTTGGCTGCCTCGGTGTCTCTGGTTGGTCGTCTTCTCTGCTCATCC  
 GAGGGGTCAAGTCTTCAGGAAAGTGGTGTACTTCACGGCCACGTTCCCCTACGTGGTGGTACCATTCT  
 GTTTGTCCCGGAGTGACCCTGGAGGGAGCCTTTGACGGCATCATGACTACCTAACCCCGAGTGGGAC  
 AAGATCCTGGAGGCCAAGGTGTGGGGTGTGCTGCCTCCAGATCTTCTACTCACTGGGCTGCGCGTGGG  
 GAGGCCTCATCACCATGGCTTCTACAACAAGTCCACAATAACTGTTACCGGGACAGTGTATCATCATCAG  
 CATCACCACCTGTGCCACCAGCGTCTATGCTGGCTTGTCTCTTCTCCATCCTCGGCTTCATGGCCAAT  
 CACCTGGGCGTGGATGTGTCCCCTGTGGCAGACCAGGCCCTGGCCTGGCCTTCGTGGCTTACCCCGAGG  
 CCCTCACACTACTTCCCATCTCCCCTGTGGTCTCTGCTCTTCTTCTTTCATGCTTATCCTGCTGGGGCT  
 GGGCACTCAGTTCTGCCTCCTGGAGACGCTGGTCACAGCCATTGTGGATGAGGTGGGGAATGAGTGGATC  
 CTGCAGAAAAAGACCTATGTGACCTGGGCGTGGCTGTGGCTGGCTTCTGCTGGGCATCCCCCTACCA  
 GCCAGGCAGGCATCTATTGGCTGCTGCTGATGGACAACCTATGCGGCCAGCTTCTCCTTGGTGGTATCTC  
 CTGCATCATGTGTGTGGCCATCATGTACATCTACGGGCACCGAACTACTTCCAGGACATCCAGATGATG  
 CTGGGATCCCACCACCCTCTTCTTTCAGATCTGCTGGCGCTTCGTCTCTCCCGCCATCATCTTCTTTA  
 TTCTAGTTTTCACTGTGATCCAGTACCAGCCGATCACCTACAACCACTACCAGTACCAGGCTGGGCCGT  
 GGCCATTGGCTTCTCATGGCTCTGTCTCCGCTCTGCTATCCCCCTCTACGCCATGTTCCGGCTCTGC  
 CGCACAGACGGGGACACCCTCCTCCAGCGTTTAAAAATGCCACAAAGCCAAGCAGAGACTGGGGCCCTG  
 CCTCCTGGAGCACCGGACAGGGCGCTACGCCCCACCATAGCCCCCTCTCCTGAGGACGGCTTCGAGGT  
 CCAGCCACTGCACCCGGACAAGGCGCAGATCCCCATTGTGGGCAGTAATGGCTCCAGCCGCTCCAGGAC  
 TCCCGGATA

**ACGCGT**ACGCGGCCGCTCGAGCAGAACTCATCTCAGAAGAGGATCTGGCAGCAATGATATCCTGGATT  
 ACAAGGATGACGACGATAAGGTTTAA

**Protein Sequence:** >RC213976 representing NM\_001024845  
Red=Cloning site Green=Tags(s)

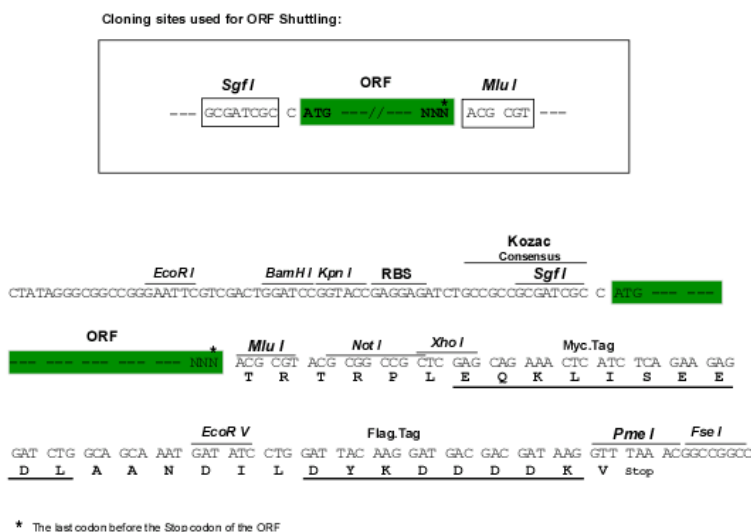
MVGKGAKGMLNGAVPSEATKRDQNLKRGNWGNQIEFVLT SVGYAVGLGNVWRFPYL CYRNGGGAFMFPYF  
 IMLIFCGIPLFFMEL SFGQFASQGCLGVWRISPMFKGVGYGMMVSTYIGIYYNVVICIAFYFFSSMTH  
 VLPWAYCNPWNTHDCAGVLDASNL TNGSRPAALPSNL SHLLNHSLQRTSPSEEWRLYVLKLSDDIGNF  
 GEVRLPLLGLGVSWLVVFLCLIRGVKSSGKVYVFTATFPYVVL TILFVRGVTLEGAFDGIYYLTPQWD  
 KILEAKVWGDAASQIFYSLGCAWGLITMASYNKFHNNCYRDSV IISITNCATSVYAGFVIFSILGFMAN  
 HLGVDVSRVADHGPGLAFVAYPEALTLLPISPLWSLLFFML ILLGLGTQFCLETLVTAIVDEVGNEWI  
 LQKTTYVTLGVAVAGFLLGIPLTSQAGIYWLLMDNYAASFSLVVISIMCVAIMYIYGHRNYFQDIQMM  
 LGFPPPLFFQICWRFVSPAIIFFILVFTVIQYQPITYNHYQYPGWAVAIGFLMALSSVLCIPLYAMFRLC  
 RTDGD TLLQRLKNATKPSRDWGPALLEHRTGRYAPTIAPSPEDGFVQPLHPDKA QIPIVGSNGSSRLQD  
 SRI

TRTRPLEQKLISEEDLAANDILDYKDDDDKV

**Chromatograms:** [https://cdn.origene.com/chromatograms/mk6235\\_a08.zip](https://cdn.origene.com/chromatograms/mk6235_a08.zip)

**Restriction Sites:** SgfI-MluI

**Cloning Scheme:**



**ACCN:** NM\_001024845

**ORF Size:** 1899 bp

**OTI Disclaimer:** The molecular sequence of this clone aligns with the gene accession number as a point of reference only. However, individual transcript sequences of the same gene can differ through naturally occurring variations (e.g. polymorphisms), each with its own valid existence. This clone is substantially in agreement with the reference, but a complete review of all prevailing variants is recommended prior to use. [More info](#)

**OTI Annotation:** This clone was engineered to express the complete ORF with an expression tag. Expression varies depending on the nature of the gene.

**Components:** The ORF clone is ion-exchange column purified and shipped in a 2D barcoded Matrix tube containing 10ug of transfection-ready, dried plasmid DNA (reconstitute with 100 ul of water).

**Reconstitution Method:**

1. Centrifuge at 5,000xg for 5min.
2. Carefully open the tube and add 100ul of sterile water to dissolve the DNA.
3. Close the tube and incubate for 10 minutes at room temperature.
4. Briefly vortex the tube and then do a quick spin (less than 5000xg) to concentrate the liquid at the bottom.
5. Store the suspended plasmid at -20°C. The DNA is stable for at least one year from date of shipping when stored at -20°C.

**RefSeq:** [NM\\_001024845.3](#)

**RefSeq Size:** 3206 bp

**RefSeq ORF:** 1902 bp

**Locus ID:** 6536

**UniProt ID:** [P48067](#)

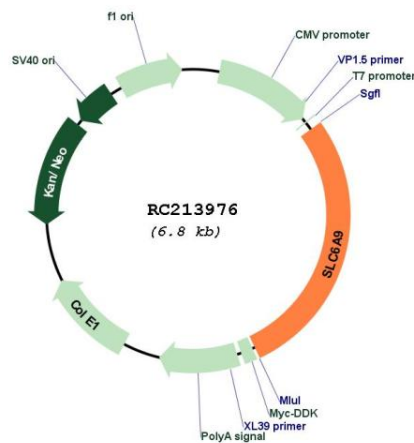
**Cytogenetics:** 1p34.1

**Protein Families:** Druggable Genome, Transmembrane

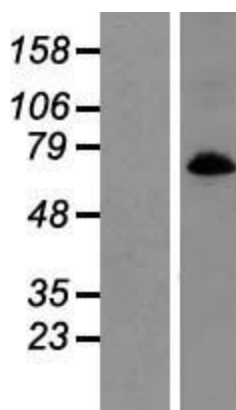
**MW:** 70.4 kDa

**Gene Summary:** The amino acid glycine acts as an inhibitory neurotransmitter in the central nervous system. The protein encoded by this gene is one of two transporters that stop glycine signaling by removing it from the synaptic cleft. [provided by RefSeq, Jun 2016]

### Product images:



Circular map for RC213976



Western blot validation of overexpression lysate (Cat# [LY422546]) using anti-DDK antibody (Cat# [TA50011-100]). Left: Cell lysates from untransfected HEK293T cells; Right: Cell lysates from HEK293T cells transfected with RC213976 using transfection reagent MegaTran 2.0 (Cat# [TT210002]).