

Product datasheet for **RC213960**

Frizzled 5 (FZD5) (NM_003468) Human Tagged ORF Clone

Product data:

Product Type:	Expression Plasmids
Product Name:	Frizzled 5 (FZD5) (NM_003468) Human Tagged ORF Clone
Tag:	Myc-DDK
Symbol:	Frizzled 5
Synonyms:	C2orf31; HFZ5
Mammalian Cell Selection:	Neomycin
Vector:	pCMV6-Entry (PS100001)
E. coli Selection:	Kanamycin (25 ug/mL)



[View online »](#)

ORF Nucleotide Sequence:

>RC213960 representing NM_003468
 Red=Cloning site Blue=ORF Green=Tags(s)

TTTTGTAATACGACTCACTATAGGGCGGCCGGGAATTCGTCGACTGGATCCGGTACCGAGGAGATCTGCC
 GCC**GCGATCGCC**

ATGGCTCGGCCTGACCCATCCGCGCCGCCCTCGTGTGTGCTGCTCCTGGCGAGCTGGTGGGCCGGG
 CGGCCCGCGTCCAAGGCCCGGTGTGCCAGGAAATCACGGTGCCCATGTGCCGCGCATCGGCTACAA
 CCTGACGCACATGCCAACCAGTTCAACCACGACACGCAGGACGAGGCGGGCCTGGAGGTGACCCAGTTC
 TGGCCGCTGGTGGAGATCCAATGCTCGCCGACCTGCGCTTCTTCTATGCTCTATGTACACGCCCATCT
 GTCTGCCCGACTACCACAAGCCGCTGCCGCCCTGCCGCTCGGTGTGCGAGCGGCCAAGGCCGGTCTC
 GCCGCTGATGCGCCAGTACGGCTTCGCCTGGCCCGAGCGCATGAGCTGCGACCGCCTCCCGGTGCTGGGC
 CGCGACGCCGAGGTCTCTGCATGGATTACAACCGCAGCGAGGCCACCACGGCGCCCCCAGGCCTTTCC
 CAGCCAAGCCCACCTTCCAGGCCCGCCAGGGGCGCCGGCTCGGGGGGGAATGCCCGCTGGGGGCC
 GTTCGTGTGCAAGTGTGCGGAGCCCTTCGTGCCATTCTGAAGGAGTACACCCGCTCTACAACAAGGTG
 CGGACGGGCCAGGTGCCAACTGCGCGGTACCCTGCTACCAGCCGCTTCAAGTCCGACGAGCGCACGT
 TCGCCACCTTCTGGATAGGCCTGTGGTCCGTGCTGTGCTTTCATCTCCACGTCACACAGTGCCACCTT
 CCTCATCGACATGGAACGCTTCCGCTATCCTGAGCGCCCCATCATCTTCTGTGACGCTGTACCTGTG
 GTGTGCTGGGCTTCTGGTGCCTGTGGTGTGGGCCATGCCAGCGTGGCTGCAGCCGCGAGCACAAAC
 ACATCCACTACGAGACCAGGGCCCTGCACTGTGACCATCGTCTTCTCTGGTCTACTTCTTCCGCAT
 GGCCAGTCCATCTGGTGGGTCACTGTGCTGCTACCTGGTTCCTGGCCCGCCGATGAAGTGGGGCAAC
 GAGGCCATCGCGGGCTACGCGCAGTACTCCACCTGGTGCCTGGCTCATCCCCAGCGTCAAGTCCATCA
 CGGCACTGGCGCTGAGCTCCGTGGACGGGACCCAGTGGCCGGCATCTGCTACGTGGGCAACCAGAACCT
 GAACTCGCTGCGCGGCTTCGTGCTGGGCCCGCTGGTGTCTACCTGCTGGTGGGCACGCTCTTCTGCTG
 GCGGGTTCGTGCTGCTTCCGCATCCGACGCTCATCAAGCAGGGCGGCACCAAGACGGACAAGCTGG
 AGAAGCTCATGATCCGCATCGGCATCTTACGCTGCTCTATACGGTCCCCGCGCAGCATTGTGGTGCCTG
 CTACCTGTACGAGCAGCACTACCGCAGAGCTGGGAGGCGGCGCTCACCTGCGCTGCCCGGGCCACGAC
 ACCGGCCAGCCGCGGCCAAGCCCGAGTACTGGTGTCTCATGCTCAAGTACTTTCATGTGCTGGTGGTGG
 GCATCACGTGGGCGTCTGGATCTGGTGGGCAAGACGGTGGAGTGTGGCGGCTTTACCAGCCGCTG
 CTGCTGCCGCCCGCGGCCACAAGAGCGGGGCGCCATGGCCGAGGGGACTACCCCGAGGGCAGC
 GCCGCGCTCACAGCAGGACCGGGCCCGGGCCCGCCGCCACCTACCACAAGCAGGTGCTCCTGTGCG
 ACGTG

ACGCGTACGCGGGCCGCTCGAGCAGAACTCATCTCAGAAGAGGATCTGGCAGCAAATGATATCCTGGATT
 ACAAGGATGACGACGATAAGGTTTAA

Protein Sequence:

>RC213960 representing NM_003468
 Red=Cloning site Green=Tags(s)

MARPDPSAPPSLLLLLLAQLVGRAAAASKAPVCQEITVPMCRGIGYNLTHMPNQFNHDTQDEAGLEVHQF
 WPLVEIQSPDLRFFLCSMYTPICLPDYHKPLPPCRSVCERAKAGCSPLMRQYGFAPPERMSCDRLPVLG
 RDAEVLCMDYNRSEATTAPRPFPAKPTLPGGPAPASGGGECAPAGGPFVCKCREPFVPIKESHPLYNKV
 RTGQVPNCAVPCYQPSFSADERTFATFWIGLWSVLCFISTSTTVATFLIDMERFRYPERPFIIFLSACYLC
 VSLGFLVRLVVGHASVACSREHNHIHYETTPALCTIVFLLVYFFGMASSIWWWILSLTWFLAAGMKWGN
 EAIAGYAQYFHLAAWLIPSVKSITALALSSVDGDPVAGICYVGNQNLNSLRGFLVPLVLLVGLFLL
 AGFVSLFRIRSVIKQGGTKDKLEKLMIRIGIFLLYTPASIVVACYLYEQHYRESWEAALTCACPGHD
 TQOPRAKPEYWVLMKLYFMCLVVGITSGVWIWSGKTVESWRRFTSRCCCRPRRGHKSGGAMAAGDYPEAS
 AALTGRTGPPGPAATYHKQVSLSHV

TRTRPLEQKLISEEDLAANDILDYKDDDDKV

Chromatograms:

https://cdn.origene.com/chromatograms/mk6161_g01.zip

Restriction Sites: SgfI-MluI

Cloning Scheme:



ACCN: NM_003468

ORF Size: 1755 bp

OTI Disclaimer: Due to the inherent nature of this plasmid, standard methods to replicate additional amounts of DNA in E. coli are highly likely to result in mutations and/or rearrangements. Therefore, OriGene does not guarantee the capability to replicate this plasmid DNA. Additional amounts of DNA can be purchased from OriGene with batch-specific, full-sequence verification at a reduced cost. Please contact our customer care team at custsupport@origene.com or by calling 301.340.3188 option 3 for pricing and delivery.

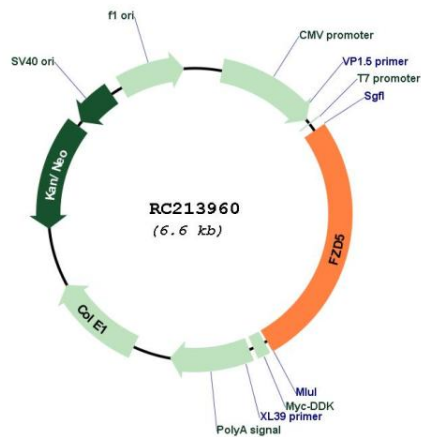
The molecular sequence of this clone aligns with the gene accession number as a point of reference only. However, individual transcript sequences of the same gene can differ through naturally occurring variations (e.g. polymorphisms), each with its own valid existence. This clone is substantially in agreement with the reference, but a complete review of all prevailing variants is recommended prior to use. [More info](#)

OTI Annotation: This clone was engineered to express the complete ORF with an expression tag. Expression varies depending on the nature of the gene.

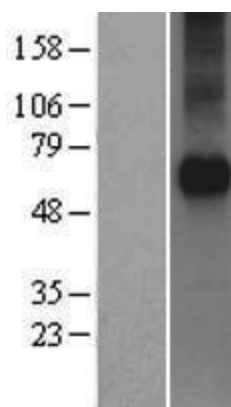
Components: The ORF clone is ion-exchange column purified and shipped in a 2D barcoded Matrix tube containing 10ug of transfection-ready, dried plasmid DNA (reconstitute with 100 ul of water).

Reconstitution Method:	<ol style="list-style-type: none">1. Centrifuge at 5,000xg for 5min.2. Carefully open the tube and add 100ul of sterile water to dissolve the DNA.3. Close the tube and incubate for 10 minutes at room temperature.4. Briefly vortex the tube and then do a quick spin (less than 5000xg) to concentrate the liquid at the bottom.5. Store the suspended plasmid at -20°C. The DNA is stable for at least one year from date of shipping when stored at -20°C.
RefSeq:	NM_003468.4
RefSeq Size:	2561 bp
RefSeq ORF:	1758 bp
Locus ID:	7855
UniProt ID:	Q13467
Cytogenetics:	2q33.3
Domains:	FRI, Frizzled
Protein Families:	Druggable Genome, GPCR, Transmembrane
Protein Pathways:	Basal cell carcinoma, Colorectal cancer, Melanogenesis, Pathways in cancer, Wnt signaling pathway
MW:	64.51 kDa
Gene Summary:	Members of the 'frizzled' gene family encode 7-transmembrane domain proteins that are receptors for Wnt signaling proteins. The FZD5 protein is believed to be the receptor for the Wnt5A ligand. [provided by RefSeq, Jul 2008]

Product images:



Circular map for RC213960



Western blot validation of overexpression lysate (Cat# [LY401175]) using anti-DDK antibody (Cat# [TA50011-100]). Left: Cell lysates from untransfected HEK293T cells; Right: Cell lysates from HEK293T cells transfected with RC213960 using transfection reagent MegaTran 2.0 (Cat# [TT210002]).