

Product datasheet for RC213959

Macrophage Inflammatory Protein 1 beta (CCL4L2) (NM_001001435) Human Tagged ORF Clone

Product data:

Product Type: Expression Plasmids
Product Name: Macrophage Inflammatory Protein 1 beta (CCL4L2) (NM_001001435) Human Tagged ORF Clone
Tag: Myc-DDK
Symbol: Macrophage Inflammatory Protein 1 beta
Synonyms: AT744.2; CCL4L; LAG-1; LAG1; SCYA4L
Mammalian Cell Selection: Neomycin
Vector: pCMV6-Entry (PS100001)
E. coli Selection: Kanamycin (25 ug/mL)
ORF Nucleotide Sequence: >RC213959 ORF sequence
 Red=Cloning site Blue=ORF Green=Tags(s)

TTTTGTAATACGACTCACTATAGGGCGGCCGGAATTCGTCGACTGGATCCGGTACCGAGGAGATCTGCC
 GCCCGCATCGCC

ATGAAGCTCTGCGTGACTGTCCTGTCTCTCCTCGTCTAGTAGCTGCCTTCTGCTCTCTAGCACTCTCAG
 CACCAATGGGCTCAGACCCTCCCACCGCTGCTGCTTTTCTTACACCGCGAGGAAGCTTCTCACAACCTT
 TGTGGTAGATTACTATGAGACCAGCAGCCTCTGCTCCAGCCAGCTGTGGTATTCCAAACCAAAAGAGGC
 AAGCAAGTCTGCGCCGACCCAGTGAGTCTGGGTCCAGGAGTACGTGTATGACCTGGAAGTGAAC

ACGCGTACGCGGCCGCTCGAGCAGAAACTCATCTCAGAAGAGGATCTGGCAGCAAATGATATCCTGGATT
 ACAAGGATGACGACGATAAGGTTTAA

Protein Sequence: >RC213959 protein sequence
 Red=Cloning site Green=Tags(s)
 MKLCVTVLSLLVLVAAFCSLALSAPMGSDPPTACCFSYTARKLPHNFVVDYYETSSLCSQPAVVFQTKRG
 KQVCADPSESQWQYVYDLELN

TRTRPLEQKLISEEDLAANDILDYKDDDDKV

Chromatograms: https://cdn.origene.com/chromatograms/mk6547_a12.zip

Restriction Sites: SgfI-MluI



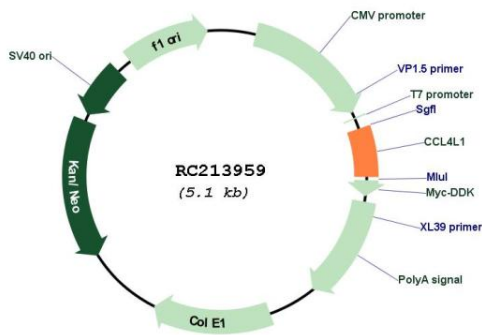
[View online »](#)

Protein Pathways: Chemokine signaling pathway, Cytokine-cytokine receptor interaction, Cytosolic DNA-sensing pathway

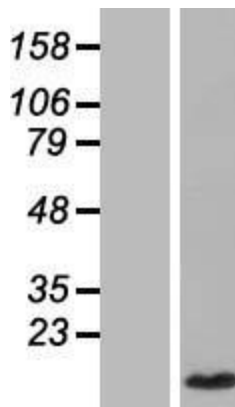
MW: 10.1 kDa

Gene Summary: This gene is one of several cytokine genes that are clustered on the q-arm of chromosome 17. Cytokines are a family of secreted proteins that function in inflammatory and immunoregulatory processes. The protein encoded by this family member is similar to the chemokine (C-C motif) ligand 4 product, which inhibits HIV entry by binding to the cellular receptor CCR5. The copy number of this gene varies among individuals, where most individuals have one to five copies. This gene copy contains a non-consensus splice acceptor site at the 3' terminal exon found in other highly similar gene copies, and it thus uses other alternative splice sites for the 3' terminal exon, resulting in multiple transcript variants. [provided by RefSeq, Apr 2014]

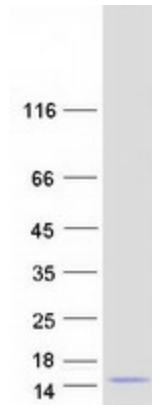
Product images:



Circular map for RC213959



Western blot validation of overexpression lysate (Cat# [LY424353]) using anti-DDK antibody (Cat# [TA50011-100]). Left: Cell lysates from untransfected HEK293T cells; Right: Cell lysates from HEK293T cells transfected with RC213959 using transfection reagent MegaTran 2.0 (Cat# [TT210002]).



Coomassie blue staining of purified CCL4L1 protein (Cat# [TP313959]). The protein was produced from HEK293T cells transfected with CCL4L1 cDNA clone (Cat# RC213959) using MegaTran 2.0 (Cat# [TT210002]).