

## Product datasheet for **RC213953**

### **C12orf71 (NM\_001080406) Human Tagged ORF Clone**

#### Product data:

Product Type:	Expression Plasmids
Product Name:	C12orf71 (NM_001080406) Human Tagged ORF Clone
Tag:	Myc-DDK
Symbol:	C12orf71
Mammalian Cell Selection:	Neomycin
Vector:	pCMV6-Entry (PS100001)
E. coli Selection:	Kanamycin (25 ug/mL)
ORF Nucleotide Sequence:	>RC213953 representing NM_001080406 Red=Cloning site Blue=ORF Green=Tags(s)

TTTTGTAATACGACTCACTATAGGGCGGCCGGAATTCGTCGACTGGATCCGGTACCGAGGAGATCTGCC  
GCC**CGATCGCC**

ATGGCATATTCATCCTCTAACAGCGACATAGAGGACGACAGCTCCAAATCCAATCCAACCTGAGCCTCT  
CTGTGGGCTATTTCCCTGTGAGGACACCCCTGTGAGGACACAACCTCCTGGGAAGATGCACCTTCCAA  
GGGTCCTCCATCCACTTCTGCCTCCCGTCCAAGGGGCATGGGGACTGAAAGGATAGGGAGACGCATG  
AAGAGACAAGACCAAATTCAGGATGAACCAGAGCAGTTTTGCAAATAAGCATCTTCTGGCCTGGGACG  
TGGACATTGGCTCCGATAACACAGACTCAAGAGCTAATAGGCTTCTAAATGGAGACAACCTGTGGATAGA  
CAAGTTACAAAAGAGAGAACAACAACTGTCTGTTGGCAAATGAATAATCTTGTGCAAGAGTTTCAGATA  
TTTCTAGAAAATCTGAAAGATGATGACGCTGTATTTCTGAAACTGCTCAGCAAGATTTCCAGCTATCCA  
GCGGCTCCCTCCGAAATGGTTCAGATGATAAGCCAGGCAACCGCCAGCCAAAGGACAAGCGCTCCAGA  
GATCTCTCAATCCTGTGAGCAGCCAGAGAAGGATGACACTCCTTACACACACAGGCCAGTGTCTGC  
CTGAACTTTGGTGGCCTTCTGCTGGCTGAGGCAGCGTATCCTCCCTCTCTGCTGAGGAGGGATCACC  
CTGTGAATGCCACAAAAGTCCCATCGGTCAGCACCAACGAAAAGACTTTTCACAGAGGCAAGAGAAT  
TCAACCTCAAGAAACCTTGAATTAGGACATCCATA

**ACGCGT**ACGCGGCCGCTCGAGCAGAAACTCATCTCAGAAGAGGATCTGGCAGCAAATGATATCCTGGATT  
ACAAGGATGACGACGATAAGGTTTAA



[View online »](#)

**Protein Sequence:** >RC213953 representing NM\_001080406  
 Red=Cloning site Green=Tags(s)

MAYSSNSDIEDDSSKSNSNLSLSVGYFPCEDTPCEDTTSWEDAPSKGPSIHFLPPVQGAWGTERIGRRM  
 KRQDQIQDEPEQFCKLSIFLAWDVDIGSDNTDSRANRLNGDNLWIDKLPKERTKLSVGKLNLLVQEFQI  
 FLENLKDDDAVFPETAQQDFQLSSGSPPEMVQMI SQATASQRTSAPEISSILSEQPEKDDTPSHTQAQCC  
 LNFGWAFSWLRQRILPSSLRRDHPVNATKSPHRSAPTKRLFHRGKRIQPQETLELGHPI

TRTRPLEQKLISEEDLAANDILDYKDDDDKV

**Chromatograms:** [https://cdn.origene.com/chromatograms/mk8029\\_b03.zip](https://cdn.origene.com/chromatograms/mk8029_b03.zip)

**Restriction Sites:** SgfI-MluI

**Cloning Scheme:**



**ACCN:** NM\_001080406

**ORF Size:** 807 bp

**OTI Disclaimer:** The molecular sequence of this clone aligns with the gene accession number as a point of reference only. However, individual transcript sequences of the same gene can differ through naturally occurring variations (e.g. polymorphisms), each with its own valid existence. This clone is substantially in agreement with the reference, but a complete review of all prevailing variants is recommended prior to use. [More info](#)

**OTI Annotation:** This clone was engineered to express the complete ORF with an expression tag. Expression varies depending on the nature of the gene.

**Components:** The ORF clone is ion-exchange column purified and shipped in a 2D barcoded Matrix tube containing 10ug of transfection-ready, dried plasmid DNA (reconstitute with 100 ul of water).

**Reconstitution Method:**

1. Centrifuge at 5,000xg for 5min.
2. Carefully open the tube and add 100ul of sterile water to dissolve the DNA.
3. Close the tube and incubate for 10 minutes at room temperature.
4. Briefly vortex the tube and then do a quick spin (less than 5000xg) to concentrate the liquid at the bottom.
5. Store the suspended plasmid at -20°C. The DNA is stable for at least one year from date of shipping when stored at -20°C.

**RefSeq:** [NM\\_001080406.1](#), [NP\\_001073875.1](#)

**RefSeq Size:** 966 bp

**RefSeq ORF:** 810 bp

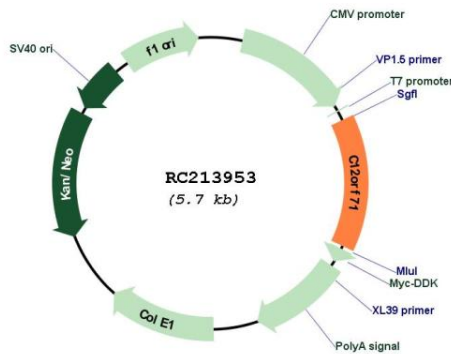
**Locus ID:** 728858

**UniProt ID:** [A8MTZ7](#)

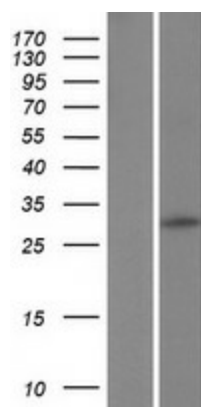
**Cytogenetics:** 12p11.23

**MW:** 30.2 kDa

**Product images:**



Circular map for RC213953



Western blot validation of overexpression lysate (Cat# [LY421623]) using anti-DDK antibody (Cat# [TA50011-100]). Left: Cell lysates from untransfected HEK293T cells; Right: Cell lysates from HEK293T cells transfected with RC213953 using transfection reagent MegaTran 2.0 (Cat# [TT210002]).