

Product datasheet for **RC213950**

PAG608 (ZMAT3) (NM_152240) Human Tagged ORF Clone

Product data:

Product Type:	Expression Plasmids
Product Name:	PAG608 (ZMAT3) (NM_152240) Human Tagged ORF Clone
Tag:	Myc-DDK
Symbol:	PAG608
Synonyms:	PAG608; WIG-1; WIG1
Mammalian Cell Selection:	Neomycin
Vector:	pCMV6-Entry (PS100001)
E. coli Selection:	Kanamycin (25 ug/mL)
ORF Nucleotide Sequence:	>RC213950 representing NM_152240 Red=Cloning site Blue=ORF Green=Tags(s)

TTTTGTAATACGACTCACTATAGGGCGGCCGGAATTCGTCGACTGGATCCGGTACCGAGGAGATCTGCC
GCC**CGATCGCC**

ATGATCCTCTTGCAACACGCGTGCTTCTCCACCTAAGCAGCCCTCACCTCGCCTCCTATGTCAGTGG
CCACCAGGTCTACAGGAACCTTGACGCTTCCACCACAGAAGCCTTTTGGCAGGAGGCTTCTTGCCTCT
TGCAGGGGAAGAAGATTATCGAAGGGAGGGGAGCAAGACTGTGCCCTGGAGGAGCTATGTAAGCCCTG
TACTGCAAACCTGCAATGTCACCTTGAACCTGACAGCAAGCCAGGCTCATTATCAGGGTAAAAATC
ATGGTAAGAACTCCGAAATTAATGTCAGCAAATAGCTGTCTCCTCCTGCTAGAATGAGCAATGTGGT
CGAGCCTGCAGCTACTCCAGTTGTTCCAGTCCCTCCGCAGATGGGCTCCTTTAAGCCAGGAGGCCGAGT
ATCCTGGCCACGGAGAATGATTACTGTAAGCTCTGTGATGCCTCCTTCAGTTCCCCAGCTGTGGCTCAGG
CTCACTATCAAGGGAAGAATCATGCCAAGAGGCTGCGGCTGGCGGAAGCTCAGAGTAACTCATTCTCGGA
ATCCTCAGAGCTGGGTCAACGGCGGCCAGGAAAGAAGGGAATGAGTTTAAAGATGATGCCTAACAGGAGA
AATATGTATACAGTACAGAATAATTCAGGTCTTACTTCAATCCCCGCTCTCGGCAGAGAATTCCACGTG
ATCTGGCCATGTGTGTTACTCCAAGTGGCCAGTTTTACTGCTCAATGTGTAATGTTGGAGCTGGCGAAGA
GATGGAATTCGGCAGCATTAGAGAGCAAGCAACATAAGAGCAAGGTGTCTGAACACGGGTACAGGAAT
GAGATGGAGAATCTGGGATATGTA

ACGCGTACGCGGCCGCTCGAGCAGAACTCATCTCAGAAGAGGATCTGGCAGCAAATGATATCCTGGATT
ACAAGGATGACGACGATAAGGTTTAA



[View online »](#)

Protein Sequence: >RC213950 representing NM_152240
Red=Cloning site Green=Tags(s)

MILLQHAVLPPPKQPSPSPMSVATRSTGTLQLPPQKPFQGEASLPLAGEEELSKGGEQDCALEELCKPL
 YCKLCNVTLNSAQAQAHYQGKNHGKRLRNYYAANSCPPPARMSNVVPAATPVVPVPPQMGSFKPGGRV
 ILATENDYCKLCDASFSSPAVAQAQAHYQGNHAKRLRLAEAQSNSFSESSELGQRRARKEGNEFKMMPNRR
 NMYTVQNNSGPYFNPRSRQRIPRDLAMCVTPSGQFYCSMCNVGAGEEMEFRQHLESKQHKSQVSEQRYSR
 EMENLGYY

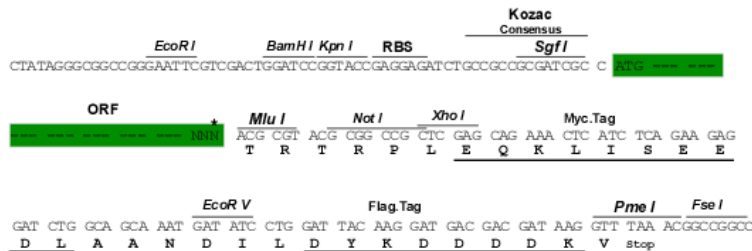
TRTRPLEQKLISEEDLAANDILDYKDDDDKV

Chromatograms: https://cdn.origene.com/chromatograms/ja1516_f08.zip

Restriction Sites: SgfI-MluI

Cloning Scheme:

Cloning sites used for ORF Shuttling:



* The last codon before the Stop codon of the ORF

ACCN: NM_152240

ORF Size: 864 bp

OTI Disclaimer: The molecular sequence of this clone aligns with the gene accession number as a point of reference only. However, individual transcript sequences of the same gene can differ through naturally occurring variations (e.g. polymorphisms), each with its own valid existence. This clone is substantially in agreement with the reference, but a complete review of all prevailing variants is recommended prior to use. [More info](#)

OTI Annotation: This clone was engineered to express the complete ORF with an expression tag. Expression varies depending on the nature of the gene.

Components: The ORF clone is ion-exchange column purified and shipped in a 2D barcoded Matrix tube containing 10ug of transfection-ready, dried plasmid DNA (reconstitute with 100 ul of water).

Reconstitution Method:

1. Centrifuge at 5,000xg for 5min.
2. Carefully open the tube and add 100ul of sterile water to dissolve the DNA.
3. Close the tube and incubate for 10 minutes at room temperature.
4. Briefly vortex the tube and then do a quick spin (less than 5000xg) to concentrate the liquid at the bottom.
5. Store the suspended plasmid at -20°C. The DNA is stable for at least one year from date of shipping when stored at -20°C.

RefSeq: [NM_152240.3](#)

RefSeq Size: 2323 bp

RefSeq ORF: 867 bp

Locus ID: 64393

UniProt ID: [Q9HA38](#)

Cytogenetics: 3q26.32

Domains: zf-C2H2

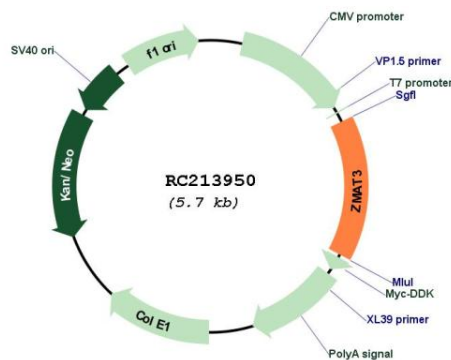
Protein Families: Transcription Factors

Protein Pathways: p53 signaling pathway

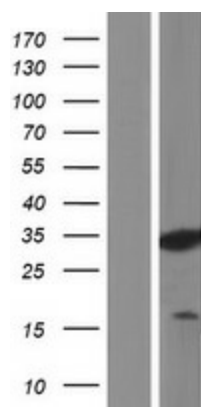
MW: 31.8 kDa

Gene Summary: This gene encodes a protein containing three zinc finger domains and a nuclear localization signal. The mRNA and the protein of this gene are upregulated by wildtype p53 and overexpression of this gene inhibits tumor cell growth, suggesting that this gene may have a role in the p53-dependent growth regulatory pathway. Alternative splicing of this gene results in two transcript variants encoding two isoforms differing in only one amino acid. [provided by RefSeq, Jul 2008]

Product images:



Circular map for RC213950



Western blot validation of overexpression lysate (Cat# [LY403457]) using anti-DDK antibody (Cat# [TA50011-100]). Left: Cell lysates from untransfected HEK293T cells; Right: Cell lysates from HEK293T cells transfected with RC213950 using transfection reagent MegaTran 2.0 (Cat# [TT210002]).