

Product datasheet for **RC213949**

WNT2B (NM_024494) Human Tagged ORF Clone

Product data:

Product Type: Expression Plasmids
Product Name: WNT2B (NM_024494) Human Tagged ORF Clone
Tag: Myc-DDK
Symbol: WNT2B
Synonyms: WNT13
Mammalian Cell Selection: Neomycin
Vector: pCMV6-Entry (PS100001)
E. coli Selection: Kanamycin (25 ug/mL)
ORF Nucleotide Sequence: >RC213949 representing NM_024494
Red=Cloning site Blue=ORF Green=Tags(s)

TTTTGTAATACGACTCACTATAGGGCGGCCGGAATTCGTCGACTGGATCCGGTACCGAGGAGATCTGCC
GCC**CGATCGCC**

ATGCTGAGACCGGGTGGTGCGGAGGAAGCTGCGCAGCTCCCGCTTCGGCGGCCAGCGCCCCGGTCCCTG
TGCCGTCGCCCCGGCCCCGACGGCTCCCGGGCTTCGGCCCGCTAGGTCTTGCTGCCTTCTGCTCCT
GCTGCTGCTGACGCTGCCGGCCCGTAGACACGTCCTGGTGGTACATTGGGGCACTGGGGCAGAGTG
ATCTGTGACAATATCCCTGGTTTGGTGAGCCGGCAGCGGCAGCTGTGCCAGCGTTACCCAGACATCATGC
GTTCAAGTGGGCGAGGGTGCCCGAGAATGGATCCGAGAGTGTGAGCACAATTCCGCCACCACCGCTGGAA
CTGTACCACCCTGGACCGGGACCACACCGTCTTTGGCCGTGTGCTCAGAAAGTAGCCGAGAGGAGCT
TTTGATATAGCCATCTCATCAGCAGGGGTAGTCCACGCTATTACTCGCGCCTGTAGCCAGGGTGAAGTGA
GTGTGTGACGCTGTGACCCCTACACCCGTGGCCGACACCATGACCAGCGTGGGGACTTTGACTGGGGTGG
CTGCAGTGACAACATCCACTACGGTGTCCGTTTGGCAAGGCCTTCGTGGATGCCAAGGAGAAGAGGCTT
AAGGATGCCCGGGCCCTCATGAACCTACATAATAACCGCTGTGGTGCACGGCTGTGCGCGGTTTCTGA
AGCTGGAGTGAAGTGCCATGGCGTGAGTGGTTCTGTACTCTGCGCACCTGTGGCGTGCACCTCTCAGA
TTCCGCCGCACAGGTGATTACCTGCGCGCAGCCTATGATGGGGCTGTGCAAGTGTGATGCCACCAAGAT
GGTGCCAACTTACCCGACGCCGCCAAGGCTATCGCCGTGCCACCCGACTGATCTGTACTTTGACA
ACTTCCAGATTACTGTGCTTTGGACAAGGCTGCAGTTCCCTAGGCACTGCAGGCGGTGTCTGCAGCAA
GACATCAAAGGAACAGACGGTTGTGAAATCATGTGCTGTGGCCGAGGGTACGACACAACCTCGAGTCACC
CGTGTACCCAGTGTGAGTGCAAATCCACTGGTGTGCTGTGCTGTACGGTGAAGGAATGCAGAAATACTG
TGGACGTCCATACTTGAAGGCCCCCAAGAAGGCAGAGTGGTGGACAGACC

ACGCGTACGCGGCCGCTCGAGCAGAACTCATCTCAGAAGAGGATCTGGCAGCAAATGATATCCTGGATT
ACAAGGATGACGACGATAAGGTTTAA



Reconstitution Method:

1. Centrifuge at 5,000xg for 5min.
2. Carefully open the tube and add 100ul of sterile water to dissolve the DNA.
3. Close the tube and incubate for 10 minutes at room temperature.
4. Briefly vortex the tube and then do a quick spin (less than 5000xg) to concentrate the liquid at the bottom.
5. Store the suspended plasmid at -20°C. The DNA is stable for at least one year from date of shipping when stored at -20°C.

RefSeq: [NM_024494.1](#), [NP_078613.1](#)

RefSeq Size: 1970 bp

RefSeq ORF: 1176 bp

Locus ID: 7482

UniProt ID: [Q93097](#)

Cytogenetics: 1p13.2

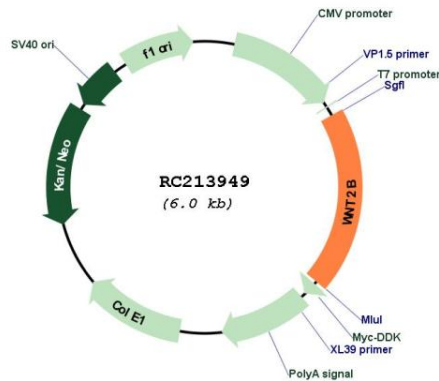
Protein Families: Secreted Protein

Protein Pathways: Basal cell carcinoma, Hedgehog signaling pathway, Melanogenesis, Pathways in cancer, Wnt signaling pathway

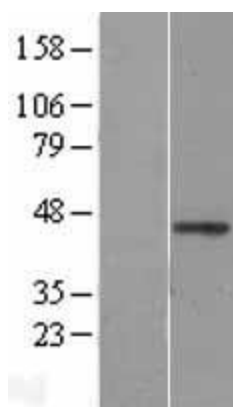
MW: 43.6 kDa

Gene Summary: This gene encodes a member of the wiggless-type MMTV integration site (WNT) family of highly conserved, secreted signaling factors. WNT family members function in a variety of developmental processes including regulation of cell growth and differentiation and are characterized by a WNT-core domain. This gene may play a role in human development as well as carcinogenesis. Alternative splicing results in multiple transcript variants. [provided by RefSeq, May 2014]

Product images:



Circular map for RC213949



Western blot validation of overexpression lysate (Cat# [LY402992]) using anti-DDK antibody (Cat# [TA50011-100]). Left: Cell lysates from untransfected HEK293T cells; Right: Cell lysates from HEK293T cells transfected with RC213949 using transfection reagent MegaTran 2.0 (Cat# [TT210002]).