

Product datasheet for RC213940

MTUS2 (NM_001033602) Human Tagged ORF Clone

Product data:

Product Type:	Expression Plasmids
Product Name:	MTUS2 (NM_001033602) Human Tagged ORF Clone
Tag:	Myc-DDK
Symbol:	MTUS2
Synonyms:	CAZIP; ICIS; KIAA0774; TIP150
Mammalian Cell Selection:	Neomycin
Vector:	pCMV6-Entry (PS100001)
E. coli Selection:	Kanamycin (25 ug/mL)
ORF Nucleotide Sequence:	>RC213940 representing NM_001033602 Red=Cloning site Blue=ORF Green=Tags(s)

TTTTGTAATACGACTCACTATAGGGCGGCCGGAATTCGTCGACTGGATCCGGTACCGAGGAGATCTGCC
GCC**CGATCGCC**

ATGGCAAGCAGCCCCACCAAAGGTTGACAATGAGCGTCCCAGTGGCTCCTAAGAAATCATGTTACACTC
AGTTGCGGGACAACAGAAATGCAGCAAGAAATAAATGAAAGCATCTTAAGTCTGGGAGATACGAATGC
CAATCAAATCATGTTGGAGGTCACTCCTCTCATGACGAGTCCAAGACATGTGACCTGGGAGATGAAATT
GGAAATACAAATCAAGTGAGCCAGAAAACCGTACCCATTTCCATAAGGAATTTACCAACTTCAGGGCT
TTGGGAAAGGCTCTCAGGCTGGCTCTGCCAGCCTGAAAGATTTTAGACTTCTTCAACCATTTCAGAGGGA
ACTCAATGAAGAGCACACAGTGGAGAGAGGCACAGATAGCCTGCAGACCACGCGGAGTATTCAGGGACCA
AGTCTGTGCGAGTTGGAGGAATGTGATGAGTGAGGCCAGTCTAGACGTTTTGGCTAAAAGGGATGCTGAAA
TTCCCCGGCATGTTCCCAAGGATAAACTGGCAAAGACCCTTGACAATGAGGAACTGAGGAGGCATCTTT
GGAAAGAGCAAGCAGCTCTGTAGCTGCAGTCCGGGAGCCTGACTCCGCAGCATCCACAGCCTATCCCTC
GACTCCCGGAAGCAGGGGTGAGATACCTGGGGTGGGGAGGGCCACAGAAGACATTGCCAGACCACG
CTGTCCCGGCAGCTTTCCCTGCAACTGACAGTACCTCAGAGGGAAAGAGTGTGCGTCATCTAAACCATC
TACCTCAGAAAGCAAGCAGAGCACTCCCTCAGAGACCCAAACAGTGGGGGCACATGTACTGCAGGTGTGC
AGTGAGCACACATCACATTCGCCCATCCAGAGCCTGCTGAATTTGACTTTGGCATCGAAGGAAATCC
CAAGTAACTGGAAGCACAAATTAGGTGAGGAAAGGGAGAGGCCAAGCTGGATCTGAAATATGTTCTCC
CAGGAGAGTTGAACAGGAGGAAAGGCAGCCAGGAAGGGTATCTGGGATGCCACAGGAAGAGAATCTG
TCAGCCTTGAGGGAAGGGATCCATGTGGGAAGCACACCCGGAAGCCACCGATGCACCTTGCCATCTGC
TGAACAGTGACCTCCACCACCTTGGGTGGGAAGAGGCAACTGTGAAGAGAAGAGAGGAGTCAACCCAGG
GGAGCAGGATTCTCTCCACACCACCCCAACAGGGCTCTGCTTCCTTAGGAGGGGTGATAATCAGCCC
ACTGGCAAATTTACCATGTGCAGGTGAGAAGTTGGGTGAAAGGACATCCAGCAGCTTTTACCAGGTG
ACAGTCATGTGGCTTTTATTCCTAATAATCTGACTGACAGCAAGCCCTTGGATGTCATTGAGGAGGAAAG
GCGGTTGGCAGTGGGAATAAGGACAGTGTATGTTTTGGTGTCAATCCTTCTGTTGGAGAGAACAAG



[View online »](#)

ACGGAGGTGCCTGAGCCCCTGGACCCTCAAAGTGGCCGCTCAGAAGCACGGGAAAGCAAAGAGGTACCA
CATCTGTTGCTGAAAACAGGAACCTTCTAGAGAATGCAGATAAGATTGAAAGCACCTCAGCAAGAGCAGA
TTCAGTTCTCAATATTCCAGCACCCCTCCACCCAGAGACAACGTGAACATGACCTACCAGCCTACAACA
CCCAGTAGCAGTTTTAGGATGTTAGCGTGTTCGGTATGGATGCGGGGTCCCCCTTGGTAGTTCCACCCC
CTACTGATAGTGCACGCTTGTGAACACGTCCCCAAAGTGCCTGACAAGAACACTTGCCCCAGTGGGAT
CCCCAAGCCTGTCTTACACATTCCAAGGACACACCTTCTCGCAGGAGGGAATGGAACTATCAGGTT
GAAAAACAGAGGAGGACAGAAAACAAAGCCATCATTATGCCCAAGCCCAAGCATGTGAGGCCAAGA
TCATCACCTACATCAGGAGGAATCCCCAGGCCCTGGGCCAGGTGGACGCCTCGCTGGTTCCAGTGGGGCT
TCCATATGCCCGCCACATGTACCATGCCTCTCCCCACGAAGAGAAGGCAGCAGGTGGTGACCTGAAG
CCATCTGCCAACCTCTATGAGAAATTAAGCCAGACCTGCAGAAGCCAAGGGTCTCAGTTCCGGATTGA
TGGTGTCTGGAATCAAGCCCCGGGACATCCTTTCAGTCAAATGAGTGAAAAGTTTTTGCAGGAGTTAC
AGACCACCCTGAAAAGAAGAGTTTTGTTCTCCTCCTATGCTCATTATGAAGTCCCTCAACTTCTAT
CGGTGAGCAGTGTCTTAAAGCCCAGCTAGGATTGGGTGCAATGTCCCGTTTACCATCTGCAAAGAGCA
GGATTCTGATTGCAAGTCAGAGGTTTCAGCGAGCGCCATCCACCACCAGGACCATAACAACAGCCAC
CAGTCTCTACAGTCCGATCCTTACGAGATTTAAAGAAAGCTTCCAGTCAAATGCTGAAAATCCAAT
CTCCCGAAATCTGGTCTCCGTCTCCCGGATACTCACGTCTCCCGCAGCCAAACTGGCGGCATTGGCT
TTGTCCGGAGCTCCAGCGTCTCCTCAGTCTCCAGCACCCAGTCCGGGGACAGTGCACAGCCAGAGCAGGG
CCGGCCAGCCACCCGTTCAACCTTTGGGAATGAAGAACAGCCAGTTCTGAAGGCATCTCTGCCTTAAAG
GACACACCCAAGGGGGCCGGCCGGTGGCCCTCCAGCATCCTCCAGTGTGACAGCACCCCGCAGGAGTT
TACTTCCAGCGCCAAAATCCACTTCCACACCCGCTGGAACAAAGAAAGATGTCCGAAAGATCAAGATAC
GAATAAACCTGCTGTTTCATCTCCTAAGAGAGTAGCAGCTTCAACCACCAAGCTTCAATCACCAGGATAC
CCAAAGCAGAGGACTGCGGCAGCTCGAAATGGGTTTCCGCCAAGCCGGACCCGAGGCCGTTGCGCAAGG
AGCGGCAGTGGTGTGCGGCTGAAGGAGCGGTGTGAGCAGCAGACCAGACAGCTGGGCGTTGCGCAAGG
GGAGCTGAAGAGGGCCATCTGCGCTTTGATGCCCTCGCCGTGGCCACGCAGCATTTCTTAGAAAAGAT
GAAAGTGCCTTGTGAAAAGAAAAGAGCTGTCAATCGAATTGCAAAATCAGGGATGAAGTTGCCCTTCC
ATACAGCAAAGTGCAGAAAACAAAAGGAGAAGGAGGAGCTGGAGAGGCGGTTGAGGACGAGGTGAA
GAGGCTGGGCTGGCAGCAGCAGGCCGAGCTCCAGGAGCTGGAGGAGCGGCTGCAGCTGCAATTCGAGGCG
GAAATGGCGCGCCTGCAGGAGGAGCAGGTGACCAGCTGCTGAGCATCCGGTGTCAACACCAGGAGCAGG
TGAAGATCTCACCGCCAGCCATGATGCTGCTCCTAGAGATGGAAAATAACCACACAGTTGCCATCAC
AATCCTGCAGGATGACCACGACCACAAAGTCCAAGAATTGATGTCCACTCATGAGCTTGAAGAAGAAAGAA
TTGAAGAAAATTTTGAAGAACTGCGGCTGTATTGCAGGACCAGGTGGACACGCTGACCTTCCAGAGCC
AGTCTCTGCGGGACAGAGCCCGCCTTGAAGAGGCCTTGAGGAAGAACACAGAGGAGCAGCTGGAGAT
TGCAATGGCTCCTTATCAGCACTTGAAGAAGACATGAAGAGTCTGAAGCAGGTATTAGAAATGAAGAAT
CAGCAAATACACGAGCAAGAAAAGAAAGATTCTTGAGCTGGAAAAGCTGGCAGAAAAGAACATTATCCTAG
AAGAAAAGATCCAGGTTCTCAAACAGCAGAACGAAGACCTCAAAGCAAGGATTGACCAAAACACAGTTGT
CACCAGACAGCTGTGGAGGAAAATGCTAACCTCCAGGAATATGTTGAGAAGGAAACCCAGGAGAAGAA
AGATTGAGCCGAACCAATGAAGAGCTGCTTGGAAAGCTCCAACTGGGGACCCGACCAGTCCGATTAAC
TCTCGCCACATCTCCCGTTTACCGCGGCTCCTCCTCGGGCCCTCCTCTCCGGCCAGAGTCAGCACAA
ACCCAGA

ACGCGTACGCGGCCGCTCGAGCAGAAAACATCTCAGAAGAGGATCTGGCAGCAAATGATATCCTGGATT
ACAAGGATGACGACGATAAGGTTTAA

Protein Sequence: >RC213940 representing NM_001033602
Red=Cloning site Green=Tags(s)

MASSPTKGLTMSVPVAPKKSCYTQLRDNRNAARNNNEISLSLGDNTANQIMLEVSSSHDESKTCDLGEI
 GNTNSSEPENRTHFHKEFHQLQGFKGKSQAGSASLKDFRLSSTIQRELNEEHTVERGTDSLQTTTSIQGP
 SLSSWRNVMSASLDVLAKRDAEIPRHVPKDKLAKTLDNEELRRHSLERASSVAAVGSLTPQHPQLSL
 DSREARGQIPGGGEGPQKTLPDHAVPAAFPATDSTSEGKSVRHPKPSTSESKQSTPSETQTVGAHVLQVC
 SEHTSHSAHPEPALNLTASKEIPSKLEAQLGQKGAEAKLDLKYVPPRRVEQEGKAAQEGYLGCHKEENL
 SALEGRDPCGEAHPEATDALGHLLNSDLHHLGVGRGNCEEKRGVNPGEQDSLHTTPKQGSASLGGADNQP
 TGKISPCAGEKL GERTSSSPGDShVAFIPNNLTDSKPLDVIEEERLGSNGKDSVMVLFNPSVGENK
 TEVPEPLDPQSGRSEARESKEVTTVAENRNLLENADKIESTSARADSVLNIPAPLHPETTVMYQPTT
 PSSSFQDVSVFGMDAGSPLVVPPTDSARLLNTSPKVPDKNTCPGIPKPVFTHSKDTPSSQEGMENYQV
 EKTEERTETKPIIMPKPKHVRPKIITYIRRNQALQVDASLVPVGLPYAPPTCTMPLPHEEKAAGDGLK
 PSANLYEKFKPDQKPRVSSGLMVSIGIKPPGHPFSQMSEKFLQEVTDHPGKEEFCSPPYAHYEVPTTFY
 RSAMLLKPOLGLGAMSRLPSAKSRILIASQRSSASAIHPPGPITATSLYSSDPSADLKKASSSNAAKSN
 LPKSGLRPPGYSRLPAAKLAAGFVRSVSSVSSVSTQSGDSAQPEQGRPATRSTFGNEEQPVLKASLPSK
 DTPKGAGRVAPPASSVTAPRRSLLPAPKSTSTPAGTKKDAPKQDQTNKPAVSSPKRVAASTTKLHSPGY
 PKORTAAARNGFPKPDPAAREAERQLVRLKERCEQQRQLGVAQGELKRAICGFDALAVATQHFRKN
 ESALVKEKELSIELANIRDEVAFHTAKCEKLQKEKEELERRFEDEVKRLGWQQQAELEERLQLQFEA
 EMARLQEEHGDQLLSIRCQHQEQVEDLTASHDAALLEMNHTVAITILQDDHDHKVQELMSTHELEKKE
 LEENFEKLRSLQDQVDTLTFQSQSLRDRARRFEEALRKNTEEQLLEIALAPYQHL EEDMKSLKQVLEMKN
 QQIHEQEKKILEKLAEKNIILEEKIQVLQQQNEDLKARIDQNTVVTRQLSEENANLQEVYVEKETQEKK
 RLSRTNEELLWKLQTDPTSPIKLSPTSPVYRGSSSGSPSPARVSTTPR

TRTRPLEQKLISEEDLAANDILDYKDDDDKV

Chromatograms: https://cdn.origene.com/chromatograms/mk8029_b05.zip

Restriction Sites: SgfI-MluI

Cloning Scheme:



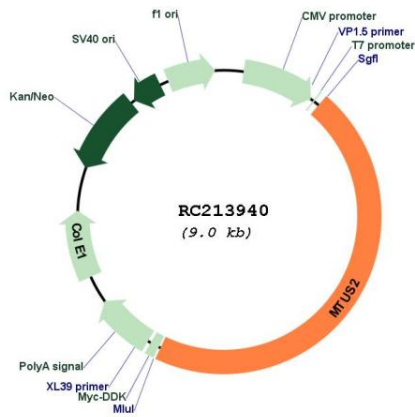
* The last codon before the Stop codon of the ORF

ACCN: NM_001033602

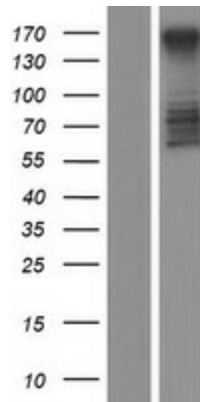
ORF Size: 4137 bp

OTI Disclaimer:	The molecular sequence of this clone aligns with the gene accession number as a point of reference only. However, individual transcript sequences of the same gene can differ through naturally occurring variations (e.g. polymorphisms), each with its own valid existence. This clone is substantially in agreement with the reference, but a complete review of all prevailing variants is recommended prior to use. More info
OTI Annotation:	This clone was engineered to express the complete ORF with an expression tag. Expression varies depending on the nature of the gene.
Components:	The ORF clone is ion-exchange column purified and shipped in a 2D barcoded Matrix tube containing 10ug of transfection-ready, dried plasmid DNA (reconstitute with 100 ul of water).
Reconstitution Method:	<ol style="list-style-type: none">1. Centrifuge at 5,000xg for 5min.2. Carefully open the tube and add 100ul of sterile water to dissolve the DNA.3. Close the tube and incubate for 10 minutes at room temperature.4. Briefly vortex the tube and then do a quick spin (less than 5000xg) to concentrate the liquid at the bottom.5. Store the suspended plasmid at -20°C. The DNA is stable for at least one year from date of shipping when stored at -20°C.
RefSeq:	NM_001033602.1 , NP_001028774.1
RefSeq Size:	4734 bp
RefSeq ORF:	4110 bp
Locus ID:	23281
UniProt ID:	Q5JR59
Cytogenetics:	13q12.3
MW:	151 kDa
Gene Summary:	Binds microtubules. Together with MAPRE1 may target the microtubule depolymerase KIF2C to the plus-end of microtubules. May regulate the dynamics of microtubules at their growing distal tip.[UniProtKB/Swiss-Prot Function]

Product images:



Circular map for RC213940



Western blot validation of overexpression lysate (Cat# [LY422408]) using anti-DDK antibody (Cat# [TA50011-100]). Left: Cell lysates from untransfected HEK293T cells; Right: Cell lysates from HEK293T cells transfected with RC213940 using transfection reagent MegaTran 2.0 (Cat# [TT210002]).