

Product datasheet for **RC213937**

NDUFB11 (NM_019056) Human Tagged ORF Clone

Product data:

Product Type: Expression Plasmids
Product Name: NDUFB11 (NM_019056) Human Tagged ORF Clone
Tag: Myc-DDK
Symbol: NDUFB11
Synonyms: CI-ESSS; ESSS; MC1DN30; Np15; NP17.3; P17.3
Mammalian Cell Selection: Neomycin
Vector: pCMV6-Entry (PS100001)
E. coli Selection: Kanamycin (25 ug/mL)
ORF Nucleotide Sequence: >RC213937 representing NM_019056
Red=Cloning site Blue=ORF Green=Tags(s)

TTTTGTAATACGACTCACTATAGGGCGGCCGGAATTCGTCGACTGGATCCGGTACCGAGGAGATCTGCC
GCC**CGATCGCC**

ATGGCGGCTGGGCTGTTTGGTTTGGAGCGCTCGCCGTCTTTGGCGGCAGCGGCGACGCGAGGGCTCCCGG
CCGCCCCGCTCCGCTGGGAATCTAGCTTCTCCAGGACTGTGGTCGCCCGTCCGCTGTGGCGGGAAAGCG
GCCCCAGAACCACACACCGTGGCAAGAGGACCCAGAACCAGGACGAAAACCTGTATGAGAAGAAC
CCAGACTCCCATGTTATGACAAGGACCCGTTTGGACGTCTGGAACATGCGACTTGTCTTCTTTG
GGTCTCCATCATCCTGGTCCTTGGCAGCACCTTGTGGCCTATCTGCCTGACTACAGGTGCACAGGGTG
TCCAAGAGCGTGGGATGGGATGAAAGAGTGGTCCCGCCGGAAGCTGAGAGGCTTGTGAAATACCGAGAG
GCCAATGGCCTCCCATCATGGAATCCAACCTGCTCGACCCAGCAAGATCCAGCTGCCAGAGGATGAG

ACGCGTACGCGGCCGCTCGAGCAGAACTCATCTCAGAAGAGGATCTGGCAGCAAATGATATCCTGGATT
ACAAGGATGACGACGATAAGGTTTAA

Protein Sequence: >RC213937 representing NM_019056
Red=Cloning site Green=Tags(s)
MAAGLFGLSARRLLAAAATRGLPAARVRWESSFSRTVVAPSAVAGKRPPEPTTPWQEDPEPEDENLYEKN
PDSHGYDKPVLDVNMRLVFFFGVSIILVLGSTFVAYLPDYRCTGCPRAWDMKEWSRREAERLVKYRE
ANGLPIMESNCFDPSKIQLPEDE

TRTRPLEQKLISEEDLAANDILDYKDDDDKV

Chromatograms: https://cdn.origene.com/chromatograms/mk6492_b03.zip



[View online »](#)

UniProt ID: [Q9NX14](#)

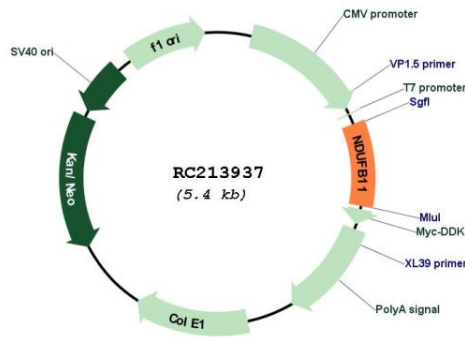
Cytogenetics: Xp11.3

Protein Families: Transmembrane

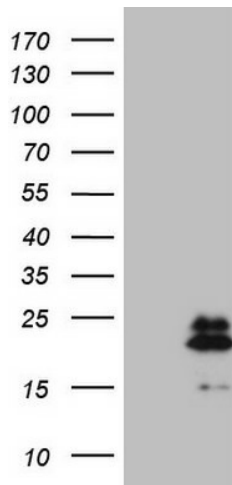
MW: 18.2 kDa

Gene Summary: The protein encoded by this gene is a subunit of the multisubunit NADH:ubiquinone oxidoreductase (complex I). Mammalian complex I is located at the mitochondrial inner membrane. This protein has NADH dehydrogenase activity and oxidoreductase activity. It transfers electrons from NADH to ubiquinone. Mutations in the human gene are associated with linear skin defects with multiple congenital anomalies 3 and mitochondrial complex I deficiency. [provided by RefSeq, Dec 2016]

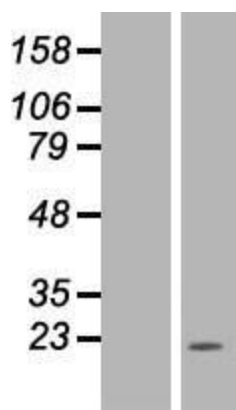
Product images:



Circular map for RC213937



HEK293T cells were transfected with the pCMV6-ENTRY control (Cat# [PS100001], Left lane) or pCMV6-ENTRY NDUFB11 (Cat# RC213937, Right lane) cDNA for 48 hrs and lysed. Equivalent amounts of cell lysates (5 ug per lane) were separated by SDS-PAGE and immunoblotted with anti-NDUFB11 (1:2000) (Cat# [TA807599]). Positive lysates [LY412795] (100ug) and [LC412795] (20ug) can be purchased separately from OriGene.



Western blot validation of overexpression lysate (Cat# [LY412795]) using anti-DDK antibody (Cat# [TA50011-100]). Left: Cell lysates from untransfected HEK293T cells; Right: Cell lysates from HEK293T cells transfected with RC213937 using transfection reagent MegaTran 2.0 (Cat# [TT210002]).