

Product datasheet for RC213935

RABL2B (NM_007081) Human Tagged ORF Clone

Product data:

Product Type: Expression Plasmids
 Product Name: RABL2B (NM_007081) Human Tagged ORF Clone
 Tag: Myc-DDK
 Symbol: RABL2B
 Mammalian Cell Selection: Neomycin
 Vector: pCMV6-Entry (PS100001)
 E. coli Selection: Kanamycin (25 ug/mL)
 ORF Nucleotide Sequence: >RC213935 representing NM_007081
 Red=Cloning site Blue=ORF Green=Tags(s)

TTTTGTAATACGACTCACTATAGGGCGGCCGGAATTCGTCGACTGGATCCGGTACCGAGGAGATCTGCC
 GCCCGATCGCC

ATGGCAGAAGACAAAACCAACCGAGTGAGTTGGACCAAGGGAAGTATGATGCTGATGACAACGTGAAGA
 TCATCTGCCTGGGAGACAGCGCAGTGGGCAAATCCAACTCATGGAGAGATTTCTCATGGATGGCTTTCA
 GCCACAGCAGCTGTCCACGTACGCCCTGACCCTGTACAAGCACACAGCCACGGTAGATGGAAGGACCATC
 CTTGTGGACTTTTGGGACACGGCAGGCCAGGAGCGGTTCCAGAGCATGCATGCCTCTACTACCACAAGG
 CCCACGCCTGCATCATGGTGTTTGTATGTACAGAGGAAAGTCACCTATAGGAACCTGAGCACCTGGTATA
 CAGAGCTTCGGGAGTTTCAGGCCAGAGATCCCATGCATCGTGGTGGCCAATAAAATTGATGACATAAACGTG
 ACCCAAAAAGCTTCAATTTTGCCAAGAAGTCTCCCTGCCCTGTATTTCTGCTCGGCTGCTGATGGTA
 CCAATGTTGTGAAGCTCTCAATGATGCAATTCGATTAGCTGTGTCTTACAAACAGAACTCCCAGGACTT
 CATGGATGAGATTTTTCAGGAGCTCGAGAACTTCAGCTTGGAGCAGGAAGAGGAGGACGTGCCAGACCAG
 GAACAGAGCAGCAGCATCGAGACCCATCAGAGGAGGCGGCTCTCCCCACAGC

ACGCGTACGCGGCCGCTCGAGCAGAACTCATCTCAGAAGAGGATCTGGCAGCAAATGATATCCTGGATT
 ACAAGGATGACGACGATAAGGTTTAA

Protein Sequence: >RC213935 representing NM_007081
 Red=Cloning site Green=Tags(s)

MAEDKTKPSELDQGYDADDNVKIIICLGDSAVGKSKLMERFLMDGFQPQQLSTYALTYKHTATVDGRTI
 LVDFWDTAGQERFQSMHASYYHKAHACIMVFDVQRKVTYRNLSTWYTELREFRPEIPCIVVANKIDDINV
 TQKSFNFAKKFLPLFYVSAADGTNVVVKLFNDAIRLAVSYKQNSQDFMDEIFQELNFSLEQEEEDVPDQ
 EQSSSIETPSEEAASPHS

TRTRPLEQKLISEEDLAANDILDYKDDDDKV

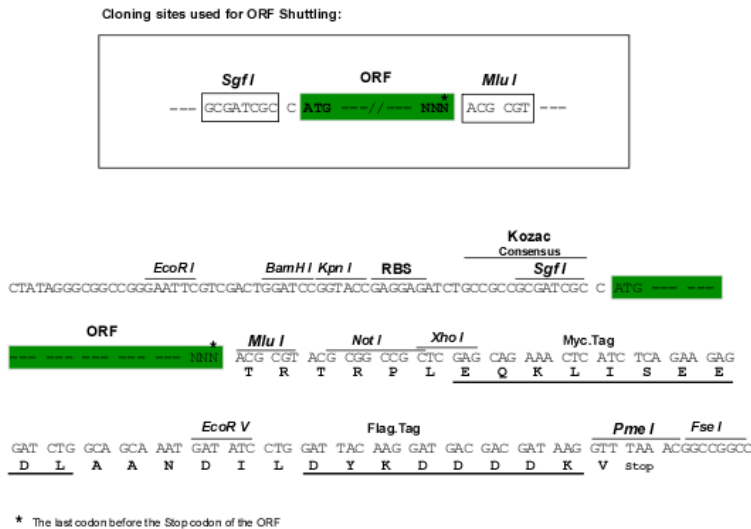


[View online »](#)

Chromatograms: https://cdn.origene.com/chromatograms/ja1515_a09.zip

Restriction Sites: SgfI-MluI

Cloning Scheme:



ACCN: NM_007081

ORF Size: 684 bp

OTI Disclaimer: The molecular sequence of this clone aligns with the gene accession number as a point of reference only. However, individual transcript sequences of the same gene can differ through naturally occurring variations (e.g. polymorphisms), each with its own valid existence. This clone is substantially in agreement with the reference, but a complete review of all prevailing variants is recommended prior to use. [More info](#)

OTI Annotation: This clone was engineered to express the complete ORF with an expression tag. Expression varies depending on the nature of the gene.

Components: The ORF clone is ion-exchange column purified and shipped in a 2D barcoded Matrix tube containing 10ug of transfection-ready, dried plasmid DNA (reconstitute with 100 ul of water).

Reconstitution Method:

1. Centrifuge at 5,000xg for 5min.
2. Carefully open the tube and add 100ul of sterile water to dissolve the DNA.
3. Close the tube and incubate for 10 minutes at room temperature.
4. Briefly vortex the tube and then do a quick spin (less than 5000xg) to concentrate the liquid at the bottom.
5. Store the suspended plasmid at -20°C. The DNA is stable for at least one year from date of shipping when stored at -20°C.

RefSeq: [NM_007081.4](#)

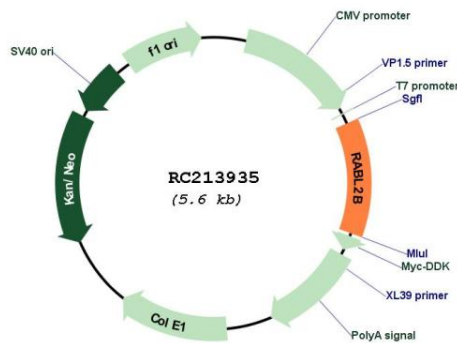
RefSeq Size: 2183 bp

RefSeq ORF: 687 bp

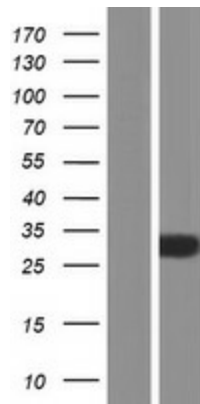
Locus ID: 11158

UniProt ID: [Q9UNT1](#)
Cytogenetics: 22q13.33
Domains: ras, RAN, RAS, RHO, RAB
Protein Families: Druggable Genome
MW: 25.9 kDa
Gene Summary: The RABL2B protein is a member of the RAB gene family which belongs to the RAS GTPase superfamily. RABL2B is located within a subtelomeric region of 22q13.3. Multiple alternatively spliced transcript variants encoding several different isoforms have been found for this gene. [provided by RefSeq, Aug 2008]

Product images:



Circular map for RC213935



Western blot validation of overexpression lysate (Cat# [LY416218]) using anti-DDK antibody (Cat# [TA50011-100]). Left: Cell lysates from untransfected HEK293T cells; Right: Cell lysates from HEK293T cells transfected with RC213935 using transfection reagent MegaTran 2.0 (Cat# [TT210002]).