

## Product datasheet for RC213933

### RBFOX1 (NM\_145892) Human Tagged ORF Clone

#### Product data:

Product Type:	Expression Plasmids
Product Name:	RBFOX1 (NM_145892) Human Tagged ORF Clone
Tag:	Myc-DDK
Symbol:	RBFOX1
Synonyms:	2BP1; A2BP1; FOX-1; FOX1; HRNBP1
Mammalian Cell Selection:	Neomycin
Vector:	pCMV6-Entry (PS100001)
E. coli Selection:	Kanamycin (25 ug/mL)
ORF Nucleotide Sequence:	>RC213933 representing NM_145892 Red=Cloning site Blue=ORF Green=Tags(s)

TTTTGTAATACGACTCACTATAGGGCGGCCGGAATTCGTCGACTGGATCCGGTACCGAGGAGATCTGCC  
GCC**CGATCGC**C

ATGCTGGCGTCTCAAGGAGTTCTCCTGCATCCTTATGGCGTGCCTATGATTGTACCGGCAGCTCCTTACC  
TTCCTGGACTGATTCAGGGTAATCAGGAAGCAGCCGCTGCCCTGACACAATGGCTCAGCCTTACGCTTC  
GGCCAGTTTGTCCCCGCAGAACGGTATCCCCGCGGAATACACGGCCCTCATCCCCACCCCGGCCA  
GAGTACACAGGCCAGACCAGGTTCCCGAGCACACATTAACCTGTACCCTCCCGCCAGACGCACTCCG  
AGCAGAGCCCGGGGACACGAGCGCTCAGACCGTCTCTGGCACCACACAGACAGATGACGCAGCACC  
GACGGATGGCCAGCCCCAGACACAACCTTCTGAAAACACGGAAAACAAGTCTCAGCCAAGCGGCTGCAT  
GTCTCCAATATCCCTTCAGGTTCCGGGATCCGGACCTCAGACAAATGTTTGGTCAATTTGGTAAAACT  
TAGATGTTGAAATATTTTTAATGAGCGAGGCTCAAAGGGATTTGGTTTCGTAACCTTCGAAAATAGTGC  
CGATGCGGACAGGGCGAGGGAGAAATTACACGGCACCGTGGTAGAGGGCCGTAATAATCGAGGTAAATAAT  
GCCACAGCACGTGTAATGACAAATAAAAAGACCGTCAACCCTTATACAAATGGCTGGAAATGAATCCAG  
TTGTGGGTGCAGTCTACAGTCCCGAATTCTATGCAGGCACGGTCTGTGTGCCAGGCCAACAGGAGGG  
ATCTTCCATGTACAGTCCCCAGTTCACCTTGTATATACTTCTGCAATGCCAGGCTTCCCGTATCCAGCA  
GCCACCCGCGGCCCGCCTACCGAGGGGCGCACCTGCGAGGCGCGGTGCGCACCGGTACAACACCTTCA  
GGCCCGCGGCGCCCCCGCCCGATCCCCGGCTACGGCGGAGTAGTGATCAAGAGCCTGTGTATGGCAA  
TAAATTGCTGCAGGGTGGTTATGCTGCATACCGCTACGCCAGCCTACCCTGCCACTGCCGCTGCCTAC  
AGTGACAGTTACGGACGAGTTTATGCTGCCACCCTACCACCACGCACTTGCTCCAGCCCCACCTACG  
GCGTTGTTGCCATGGCTAGTATATACCGAGGGGATACAACCGTTTTGCTCCATAC

**ACGGT**ACGCGGCCGCTCGAGCAGAACTCATCTCAGAAGAGGATCTGGCAGCAATGATATCCTGGATT  
ACAAGGATGACGACGATAAGGTTTAA



[View online »](#)

**Protein Sequence:** >RC213933 representing NM\_145892  
Red=Cloning site Green=Tags(s)

MLASQGVLLHPYGVPMIVPAAPYLPLGIQGNQEAAPDTMAQPYASAQFAPPQNGIPAEYTAPHPHPAP  
 EYTGQTTVPEHTLNLYPQAQTHSEQSPADTSAQTVSGTATQTDDAAPTGGPQTQPSSENTENKSQPKRLH  
 VSNIPFRFRDPLRQMFQGFQKILDVEIIFNERGSKGFGFVTFENSADADRAREKLHGTVVEGRKIEVNN  
 ATARVMTNKKTVNPHYTNGWKLNPVVGAVYSPEFYAGTVLLCQANQEGSSMYSAPSSLVYTSAMPGFYPYA  
 ATAAAAYRGAHLRGRRTVYNTFRAAAAPPPPIPAYGGVYQEPVYGNKLLQGGYAAARYAQPTPATAAAAY  
 SDSYGRVYAADPYHHALAPAPTYGVGAMASIYRGGYNRFAPY

TRTRPLEQKLISEEDLAANDILDYKDDDDKV

**Chromatograms:** [https://cdn.origene.com/chromatograms/mk8056\\_f09.zip](https://cdn.origene.com/chromatograms/mk8056_f09.zip)

**Restriction Sites:** SgfI-MluI

**Cloning Scheme:**



\* The last codon before the Stop codon of the ORF

**ACCN:** NM\_145892

**ORF Size:** 1176 bp

**OTI Disclaimer:** The molecular sequence of this clone aligns with the gene accession number as a point of reference only. However, individual transcript sequences of the same gene can differ through naturally occurring variations (e.g. polymorphisms), each with its own valid existence. This clone is substantially in agreement with the reference, but a complete review of all prevailing variants is recommended prior to use. [More info](#)

**OTI Annotation:** This clone was engineered to express the complete ORF with an expression tag. Expression varies depending on the nature of the gene.

**Components:** The ORF clone is ion-exchange column purified and shipped in a 2D barcoded Matrix tube containing 10ug of transfection-ready, dried plasmid DNA (reconstitute with 100 ul of water).

- Reconstitution Method:**
1. Centrifuge at 5,000xg for 5min.
  2. Carefully open the tube and add 100ul of sterile water to dissolve the DNA.
  3. Close the tube and incubate for 10 minutes at room temperature.
  4. Briefly vortex the tube and then do a quick spin (less than 5000xg) to concentrate the liquid at the bottom.
  5. Store the suspended plasmid at -20°C. The DNA is stable for at least one year from date of shipping when stored at -20°C.

**RefSeq:** [NM\\_145892.3](#)

**RefSeq Size:** 3184 bp

**RefSeq ORF:** 1179 bp

**Locus ID:** 54715

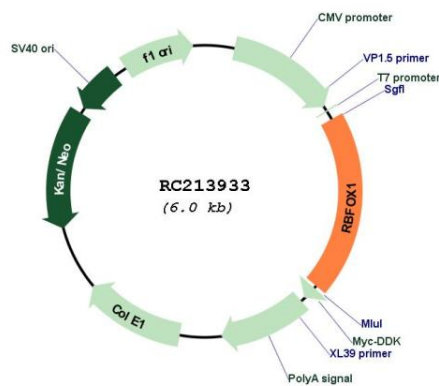
**UniProt ID:** [Q9NWB1](#)

**Cytogenetics:** 16p13.3

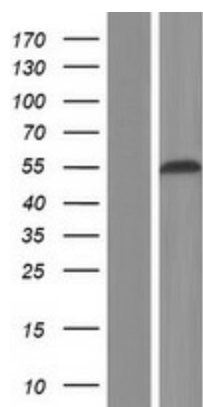
**MW:** 41.9 kDa

**Gene Summary:** The Fox-1 family of RNA-binding proteins is evolutionarily conserved, and regulates tissue-specific alternative splicing in metazoa. Fox-1 recognizes a (U)GCAUG stretch in regulated exons or in flanking introns. The protein binds to the C-terminus of ataxin-2 and may contribute to the restricted pathology of spinocerebellar ataxia type 2 (SCA2). Ataxin-2 is the product of the SCA2 gene which causes familial neurodegenerative diseases. Fox-1 and ataxin-2 are both localized in the trans-Golgi network. Several alternatively spliced transcript variants encoding different isoforms have been found for this gene. [provided by RefSeq, Nov 2011]

### Product images:



Circular map for RC213933



Western blot validation of overexpression lysate (Cat# [LY407830]) using anti-DDK antibody (Cat# [TA50011-100]). Left: Cell lysates from untransfected HEK293T cells; Right: Cell lysates from HEK293T cells transfected with RC213933 using transfection reagent MegaTran 2.0 (Cat# [TT210002]).