

Product datasheet for RC213927

CCN6 (NM_003880) Human Tagged ORF Clone

Product data:

Product Type:	Expression Plasmids
Product Name:	CCN6 (NM_003880) Human Tagged ORF Clone
Tag:	Myc-DDK
Symbol:	CCN6
Synonyms:	LIBC; PPAC; PPD; PPRD; WISP-3; WISP3
Mammalian Cell Selection:	Neomycin
Vector:	pCMV6-Entry (PS100001)
E. coli Selection:	Kanamycin (25 ug/mL)
ORF Nucleotide Sequence:	>RC213927 representing NM_003880 Red=Cloning site Blue=ORF Green=Tags(s)

TTTTGTAATACGACTCACTATAGGGCGGCCGGAATTCGTCGACTGGATCCGGTACCGAGGAGATCTGCC
GCC**CGATCGCC**

ATGCAGGGGCTCCTCTTCTCCACTCTTCTGCTTGGCTGGCCTGGCACAGTTCTGCTGCAGGGTACAGGGCA
CTGGACCATTAGATACAACACCTGAAGGAAGGCCTGGAGAAGTGTGAGATGCACCTCAGCGTAAACAGTT
TTGTCAGTGGCCCTGCAAATGCCCTCAGCAGAAGCCCCGTTGCCCTCTGGAGTGAAGCTGGTGGAGAT
GGCTGTGGATGCTGTAATACTGTGCCAAGCAACCAGGGGAAATCTGCAATGAAGCTGACCTCTGTGACC
CACACAAAGGGTGTATTGTGACTACTCAGTAGACAGGCCTAGGTACGAGACTGGAGTGTGTGCATACCT
TGTAGCTGTTGGGTGCGAGTTCAACCAGGTACATTATCATAATGGCCAAGTGTTCAGCCCAACCCCTTG
TTCAGCTGCCTCTGTGTGAGTGGGGCCATTGGATGCACACCTCTGTTCATACAAAGCTGGCTGGCAGTC
ACTGCTCTGGAGCTAAAGGTGGAAGAAGTCTGATCAGTCAAAGTGTAGCCTGGAACCTTACTACAGCA
GCTTTCAACAAGCTACAAAACAATGCCAGCTTATAGAAATCTCCCACTTATTTGGAAAAAAAATGTCTT
GTGCAAGCAACAAAATGGACTCCCTGCTCCAGAACATGTGGGATGGGAATATCTAACAGGGTGACCAATG
AAAACAGCAACTGTGAAATGAGAAAAGAGAAAAGACTGTGTTACATTGAGCCTTGCAGCAGCAATATATT
AAAGACAATAAAGATCCCAAAGGAAAAACATGCCAACCTACTTTCCAAGCTCCAAAGCTGAAAAATTT
GTCTTTTCTGGATGCTCAAGTACTCAGAGTTACAACCCACTTTTTGTGGAATATGCTTGGATAAGAGAT
GCTGTATCCCTAATAAGTCTAAAATGATTACTATTCAATTTGATTGCCCAAATGAGGGGTATTTAAATG
GAAGATGCTGTGGATTACATCTTGTGTGTGTCAGAGAACTGCAGAGAACCTGGAGATATATTTTCTGAG
CTCAAGATTCTG

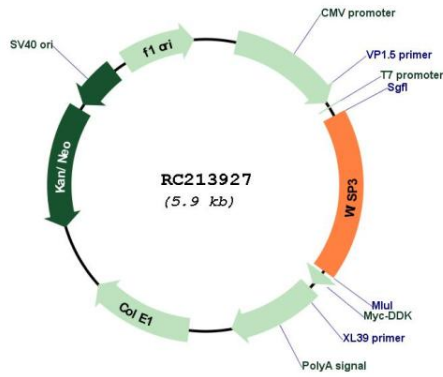
ACGCGTACGCGGCCGCTCGAGCAGAACTCATCTCAGAAGAGGATCTGGCAGCAAATGATATCCTGGATT
ACAAGGATGACGACGATAAGGTTAA



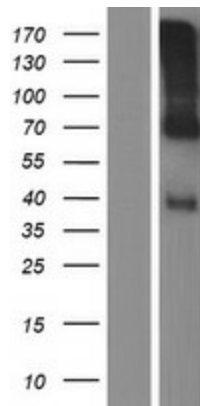
[View online »](#)

Reconstitution Method:	<ol style="list-style-type: none">1. Centrifuge at 5,000xg for 5min.2. Carefully open the tube and add 100ul of sterile water to dissolve the DNA.3. Close the tube and incubate for 10 minutes at room temperature.4. Briefly vortex the tube and then do a quick spin (less than 5000xg) to concentrate the liquid at the bottom.5. Store the suspended plasmid at -20°C. The DNA is stable for at least one year from date of shipping when stored at -20°C.
RefSeq:	NM_003880.4
RefSeq Size:	1307 bp
RefSeq ORF:	1065 bp
Locus ID:	8838
UniProt ID:	O95389
Cytogenetics:	6q21
Protein Families:	Druggable Genome, ES Cell Differentiation/IPS, Secreted Protein
MW:	39.1 kDa
Gene Summary:	<p>This gene encodes a member of the WNT1 inducible signaling pathway (WISP) protein subfamily, which belongs to the connective tissue growth factor (CTGF) family. WNT1 is a member of a family of cysteine-rich, glycosylated signaling proteins that mediate diverse developmental processes. The CTGF family members are characterized by four conserved cysteine-rich domains: insulin-like growth factor-binding domain, von Willebrand factor type C module, thrombospondin domain and C-terminal cystine knot-like domain. This gene is overexpressed in colon tumors. It may be downstream in the WNT1 signaling pathway that is relevant to malignant transformation. Mutations of this gene are associated with progressive pseudorheumatoid dysplasia, an autosomal recessive skeletal disorder, indicating that the gene is essential for normal postnatal skeletal growth and cartilage homeostasis. Multiple transcript variants encoding different isoforms have been found for this gene. [provided by RefSeq, Jul 2008]</p>

Product images:



Circular map for RC213927



Western blot validation of overexpression lysate (Cat# [LY418377]) using anti-DDK antibody (Cat# [TA50011-100]). Left: Cell lysates from untransfected HEK293T cells; Right: Cell lysates from HEK293T cells transfected with RC213927 using transfection reagent MegaTran 2.0 (Cat# [TT210002]).