

Product datasheet for RC213926

Dystrophin (DMD) (NM_004021) Human Tagged ORF Clone

Product data:

Product Type:	Expression Plasmids
Product Name:	Dystrophin (DMD) (NM_004021) Human Tagged ORF Clone
Tag:	Myc-DDK
Symbol:	Dystrophin
Synonyms:	BMD; CMD3B; DXS142; DXS164; DXS206; DXS230; DXS239; DXS268; DXS269; DXS270; DXS272; MRX85
Mammalian Cell Selection:	Neomycin
Vector:	pCMV6-AC-Myc-DDK (PS100007)
E. coli Selection:	Ampicillin (100 ug/mL)
ORF Nucleotide Sequence:	>RC213926 representing NM_004021 Red=Cloning site Blue=ORF Green=Tags(s)

TTTTGTAATACGACTCACTATAGGGCGGCCGGAATTCGTCGACTGGATCCGGTACCGAGGAGATCTGCC
GCCGCGATCGCC

ATGCCATCTTCCTTGATGTTGGAGGTACCTGCTCTGGCAGATTTCAACCGGGCTTGACAGAACTTACCG
ACTGGCTTTCTCTGCTTGATCAAGTTATAAAATCACAGAGGGTGATGGTGGGTGACCTTGAGGATATCAA
CGAGATGATCATCAAGCAGAAGGCAACAATGCAGGATTTGGAACAGAGCGTCCCAGTTGGAAGAACTC
ATTACCGTCCCAAAATTTGAAAAACAAGACCAGCAATCAAGAGGCTAGAACAATCATTACGGATCGAA
TTGAAAGAATTCAGAATCAGTGGATGAAGTACAAGAACACCTTCAGAACCGGAGGCAACAGTTGAATGA
AATGTTAAAGGATTCAACACAATGGCTGGAAGCTAAGGAAGAAGCTGAGCAGGTCTTAGGACAGGCCAGA
GCCAAGCTTGAGTCATGGAAGGAGGGTCCCTATACAGTAGATGCAATCCAAAAGAAAATCACAGAAACCA
AGCAGTTGGCCAAAGACCTCCGCCAGTGCCAGACAAATGTAGATGTGGCAAATGACTTGGCCCTGAAACT
TCTCCGGGATTATTCTGCAGATGATACCAGAAAAGTCCACATGATAACAGAGAATATCAATGCCTCTTGG
AGAAGCATTATAAAAAGGGTGAGTGAGCGAGAGGCTGCTTTGGAAGAACTCATAGATTACTGCAACAGT
TCCCCCTGGACCTGGAAGTTTCTTGCCTGGCTTACAGAAGCTGAAACAACCTGCCAATGTCTACAGGA
TGCTACCCGTAAGGAAAGGCTCCTAGAAGACTCCAAGGGAGTAAAAGAGCTGATGAAACAATGGCAAGAC
CTCCAAGTGAAATTGAAGCTCACACAGATGTTTATCACAACTGGATGAAAACAGCCAAAAAATCCTGA
GATCCCTGGAAGGTTCCGATGATGCAGTCTGTTACAAAGACGTTTGGATAACATGAACTCAAGTGGAG
TGAACCTCGAAGGTTCTCAACATTAGGTCCTTTGGAAGCCAGTCTGACCAGTGGAAAGCGTCTG
CACCTTTCTCTGCAGAACTTCTGGTGTGGCTACAGCTGAAAGATGATGAATTAAGCCGGCAGGCACCTA
TTGGAGGCGACTTCCAGCAGTTCAGAAGCAGAACGATGTACATAGGGCCTTCAAGAGGGAATTGAAAAC
TAAAGAACCTGTAATCATGAGTACTCTTGGAGACTGTACGAATATTTCTGCAGAGCAGCCTTTGGAAGGA
CTAGAGAACTCTACCAGGAGCCAGAGAGCTGCCTCCTGAGGAGAGAGCCAGAATGTCACTCGGCTTC
TACGAAAGCAGGCTGAGGAGTCAATACTGAGTGGAAAAATTGAACCTGCACTCCGCTGACTGGCAGAG



AAAAATAGATGAGACCCCTTGAAAGACTCCAGGAACTTCAAGAGGCCACGGATGAGCTGGACCTCAAGCTG
CGCCAAGCTGAGGTGATCAAGGGATCCTGGCAGCCCGTGGGCGATCTCCTCATTGACTCTCTCCAAGATC
ACCTCGAGAAAGTCAAGGCACTTCGAGGAGAAATTGCGCCTCTGAAAGAGAACGTGAGCCACGTCAATGA
CCTTGCTCGCCAGCTTACCACTTTGGGCATTGAGCTCTCACCGTATAACCTCAGCACTCTGGAAGACCTG
AACACCAGATGGAAGCTTCTGCAGGTGGCCGTCGAGGACCGAGTCAGGCAGCTGCATGAAGCCCACAGGG
ACTTTGGTCCAGCATCTCAGCACTTTCTTTCCACGTCTGTCCAGGGTCCCTGGGAGAGAGCCATCTCGCC
AAACAAAGTGCCCTACTATATCAACCACGAGACTCAAACAACCTGCTGGGACCATCCCAAAATGACAGAG
CTCTACCAGTCTTTAGCTGACCTGAATAATGTCAGATTCTCAGCTTATAGGACTGCCATGAAACTCCGAA
GACTGCAGAAGGCCCTTTGCTTGGATCTCTTGAGCCTGTCAGCTGCATGTGATGCCTTGGACCAGCACAA
CCTCAAGCAAAATGACCAGCCATGGATATCCTGCAGATTATTAATTGTTTGACCACTATTTATGACCGC
CTGGAGCAAGAGCACAACAATTTGGTCAACGTCCCTCTCTGCGTGGATATGTGTCTGAACTGGCTGCTGA
ATGTTTATGATACGGGACGAACAGGGAGGATCCGTGTCCTGTCTTTTAAACTGGCATCATTTCCCTGTG
TAAAGCACATTTGGAAGACAAGTACAGATACCTTTTCAAGCAAGTGGCAAGTTCAACAGGATTTTGTGAC
CAGCGCAGGCTGGGCTCCTTCTGCATGATTCTATCCAAATTCAGACAGTTGGGTGAAGTTGCATCCT
TTGGGGCAGTAACATTGAGCCAAGTGTCCGGAGCTGCTTCCAATTTGCTAATAAAGCCAGAGATCGA
AGCGGCCCTCTTCTAGACTGGATGAGACTGGAACCCAGTCCATGGTGTGGCTGCCCGTCTGCACAGA
GTGGCTGCTGCAGAACTGCCAAGCATCAGGCCAAATGTAACATCTGCAAGAGTGTCCAATCATTGGAT
TCAGGTACAGGAGTCTAAAGCACTTTAATTATGACATCTGCCAAAGCTGCTTTTTTCTGGTCGAGTTGC
AAAAGGCCATAAAATGCACTATCCCATGGTGGAAATATTGCACTCCGACTACATCAGGAGAAGATGTTCGA
GACTTTGCCAAGTACTAAAAACAATTTGCAACCAAAAGGTATTTTGGCAAGCATCCCCGATGGGCT
ACCTGCCAGTGCAGACTGTCTTAGAGGGGGACAACATGGAACCTCCGTTACTCTGATCACTTCTGGCC
AGTAGATTCTGCGCTGCCTCGTCCCCTCAGCTTTCACACGATGATACTCATTACGCATTGAACATTAT
GCTAGCAGGCTAGCAGAAATGGAAAACAGCAATGGATCTTATCTAAATGATAGCATCTCTCCTAATGAGA
GCATAGATGATGAACATTTGTTAATCCAGCATTACTGCCAAAGTTTGAACCAGGACTCCCCCTGAGCCA
GCCTCGTAGTCTGCCAGATCTTGATTTCTTAGAGAGTGAGGAAAGAGGGGAGCTAGAGAGAATCCTA
GCAGATCTTGAGGAAGAAAACAGGAATCTGCAAGCAGAATATGACCGTCTAAAGCAGCAGCACGAACATA
AAGGCCTGTCCCCACTGCCGTCCCCTCCTGAAATGATGCCACCTCTCCCAGAGTCCCCGGGATGCTGA
GCTCATTGCTGAGGCCAAGCTACTGCGTCAACACAAAGGCCGCTGGAAGCCAGGATGCAAAATCCTGGAA
GACCACAATAAACAGCTGGAGTACAGTTACACAGGCTAAGGCAGCTGCTGGAGCAACCCAGGCAGAGG
CCAAAGTGAATGGCACAACGGTGTCTCTCCTTCTACCTCTCTACAGAGGTCGACAGCAGTCAGCCTAT
GCTGCTCCGAGTGGTTGGCAGTCAAACCTCGGACTCCATGGGTGAGGAAGATCTTCTCAGTCTCCCAG
GACACAAGCACAGGGTTAGAGGAGGTGATGGAGCAACTCAACAACCTCCTCCCTAGTTCAAGAGGACACA
ATGTAGGAAGTCTTTTCCACATGGCAGATGATTTGGGCAGAGCGATGGAGTCCTTAGTATCAGTCATGAC
AGATGAAGAAGGAGCAGAA

ACGCGTACGCGGCCGCTCGAGCAGAACTCATCTCAGAAGAGGATCTGGCAGCAATGATATCCTGGATT
ACAAGGATGACGACGATAAGGTTTAA

Protein Sequence: >RC213926 representing NM_004021
 Red=Cloning site Green=Tags(s)

MPSSLMLEVPALADFNRAWTEL TDWLSLLDQVIKSQRVMVGDLEDINEMIIKQKATMQDLEQRRPQLEEL
 ITAAQNLKNKTSNQEARTIITDRIERIQNQWDEVQEHLQNRQQLNEMLKDSTQWLEAKEEAEQVLGOAR
 AKLESWKEGPYVDIAIQKKITETKQLAKDLRQWQTNVDVANDLALKLLRDYSADDTRKVMHITENINASW
 RSIHKRVSERAALAEETHRLLQQFPLDLEKFLAWL TEAETTANVLQDATRKERLLEDKSGVKELMKQWQD
 LQGEIEAHTDVYHNL DENSQKILRSLEGSDDAVLLQRRLDNMNFKWSELRKKSLNIRSHLEASSDQWKRL
 HLSLQELLVWLQLKDDDEL SRQAPIGGDFPAVQKQNDVHRAFKRELKTKPEVIMSTLETVRIFL TEQPLEG
 LEKLYQEPRELPEERAQNVTRLLRKQAEENVTEWEKLNLSADWQRKIDETLERLQELQEATDEL DLKL
 RQAEVIKGSWQPVGDLL IDSLQDHLEKVKALRGEIAPLKENVSHVNDLARQL TTLGIQLSPYNLSTLEDL
 NTRWKLQVAVEDRVRQLHEAHRDFGPASQHF LSTSVQGPWERAISPKNVPYYINHETQTTCDWHPKMT
 LYQSLADLNNVRF SAYRTAMKLRRLQKALCLDLLSL SAACDALDQHNLKQNDQPMIDLQI INCLTTIYDR
 LEQEHNNLVNVP LCVDMCLNWL NVYDTGRTGRIRVLSFKTGIISLCKAHLEDKYRYL FKQVASSTGFC
 QRRLGLLLHDSIQIPRQLGEVAFSGGSNI EPSVRSFCQFANNKPEIEAALFLDWMRLEPQSMVWLPVLR
 VAAAEAKHQAKCNICKCEPIIGFRYRSLKHFNYD ICQSCFFSGRVAKGHMHPMVEYCTPTTSGEDVR
 DFAKVLKKNKFRKRYFAKHPRMGYLPVQTVLEGDNMPVTL INFWPVDSAPASSPQLSHDDTHSRIEY
 ASRLAEMENSGSYLND SISPNEIDDEHLLIQHYCQSLNQD SPLSQPRSPAQILISLESEERGERIL
 ADLEENRNLQAEYDRLKQHEHKGLSPLSPPEMPTSPQSPRDAELIAEAKLLRQHKGRLEARMQILE
 DHNKQLESQHLRLRQLLEQPQAEAKVNGTTVSSPSTSLQRSDSSQPMLLRVVGSTSDSMGEEDLLSP
 DTSTGLEEVMEQLNNSFPSSRGHNVGSLFHMADDLGRAMESLSVMTDEEGAE

TRTRPLEQKLISEEDLAANDILDYKDDDDKV

Chromatograms: https://cdn.origene.com/chromatograms/ja2646_g06.zip

Restriction Sites: SgfI-MluI

Cloning Scheme:

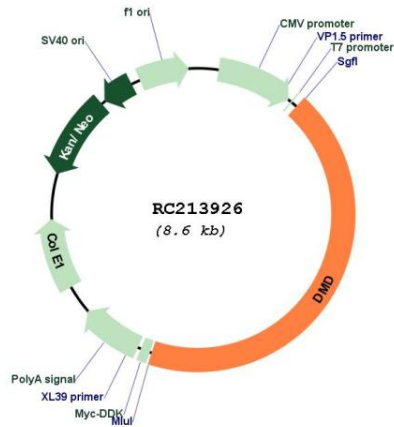


ACCN: NM_004021

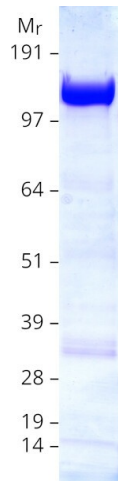
ORF Size: 3729 bp

OTI Disclaimer:	The molecular sequence of this clone aligns with the gene accession number as a point of reference only. However, individual transcript sequences of the same gene can differ through naturally occurring variations (e.g. polymorphisms), each with its own valid existence. This clone is substantially in agreement with the reference, but a complete review of all prevailing variants is recommended prior to use. More info
OTI Annotation:	This clone was engineered to express the complete ORF with an expression tag. Expression varies depending on the nature of the gene.
Components:	The ORF clone is ion-exchange column purified and shipped in a 2D barcoded Matrix tube containing 10ug of transfection-ready, dried plasmid DNA (reconstitute with 100 ul of water).
Reconstitution Method:	<ol style="list-style-type: none">1. Centrifuge at 5,000xg for 5min.2. Carefully open the tube and add 100ul of sterile water to dissolve the DNA.3. Close the tube and incubate for 10 minutes at room temperature.4. Briefly vortex the tube and then do a quick spin (less than 5000xg) to concentrate the liquid at the bottom.5. Store the suspended plasmid at -20°C. The DNA is stable for at least one year from date of shipping when stored at -20°C.
RefSeq:	NM_004021.2 , NP_004012.1
RefSeq Size:	7378 bp
RefSeq ORF:	3732 bp
Locus ID:	1756
UniProt ID:	P11532
Cytogenetics:	Xp21.2-p21.1
Domains:	ZnF_ZZ, WW, spectrin
Protein Pathways:	Arrhythmogenic right ventricular cardiomyopathy (ARVC), Dilated cardiomyopathy, Hypertrophic cardiomyopathy (HCM), Viral myocarditis
MW:	143.6 kDa
Gene Summary:	This gene spans a genomic range of greater than 2 Mb and encodes a large protein containing an N-terminal actin-binding domain and multiple spectrin repeats. The encoded protein forms a component of the dystrophin-glycoprotein complex (DGC), which bridges the inner cytoskeleton and the extracellular matrix. Deletions, duplications, and point mutations at this gene locus may cause Duchenne muscular dystrophy (DMD), Becker muscular dystrophy (BMD), or cardiomyopathy. Alternative promoter usage and alternative splicing result in numerous distinct transcript variants and protein isoforms for this gene. [provided by RefSeq, Dec 2016]

Product images:



Circular map for RC213926



Coomassie blue staining of purified DMD protein (Cat# [TP313926]). The protein was produced from HEK293T cells transfected with DMD cDNA clone (Cat# RC213926) using MegaTran 2.0 (Cat# [TT210002]).