

Product datasheet for **RC213917**

ZNF347 (NM_032584) Human Tagged ORF Clone

Product data:

Product Type:	Expression Plasmids
Product Name:	ZNF347 (NM_032584) Human Tagged ORF Clone
Tag:	Myc-DDK
Symbol:	ZNF347
Synonyms:	ZNF1111
Vector:	pCMV6-Entry (PS100001)
E. coli Selection:	Kanamycin (25 ug/mL)
Cell Selection:	Neomycin



[View online »](#)

ORF Nucleotide
Sequence:

>RC213917 representing NM_032584
Red=Cloning site Blue=ORF Green=Tags(s)

TTTTGTAATACGACTCACTATAGGGCGGCCGGGAATTCGTCGACTGGATCCGGTACCGAGGAGATCTGCC
GCC**CGCATCGCC**

ATGGCTCTCACCCAGGGACAGGTGACATTCAGGGATGTGGCTATAGAATCTCTCAGGAGGAGTGGACAT
GCCTGGACCCCGCTCAGAGGACTTTGTACAGGGACGTGATGTTGGAGAATTATAGGAACCTGGCCTCCCT
GGGAATCTCTTGTTTGACCTCAGTATTATCTCTATGTTGGAGCAAGGAAGGAGCCTTTCACTTTGGAG
AGCCAAGTACAAATAGCAGGAAACCCAGATGGATGGGAATGGATCAAAGCTGTGATCACAGCTCTCTCTT
CCGAATTTGTAATGAAAGATTTACTACAAAAGGGAAGAGTAATACAGGAGAAGTATCCAAACAGTGAT
GTTGGAAGACAGGAAAGCAAGACATTGAAGGATGTTCCCTTCAGGGAAGTCCAGAAAAATACACATGGC
CTTGAGTATCAATGCAGAGATGCTGAAGGAAATACAAAGGAGTGCTTTTGACCCAAGAAGGCAATCTCA
CTCATGGAAGAGATGAACATGATAAAAGAGATGCAAGAAACAAGCTTATTAATAATCAGCTTGGATTAAG
CCTTCAGTCACATCTGCCTGAATGCAGCTTTTTCAATATGAAGGAAAAATTTATGAATGTAATCAGGTT
GAGAAGTCTTTCAACAATAATTCCTCAGTTTCACCACCTCAACAATGCCTTATAATGTCAAAACCCACA
TTTCTAAGAAATATCTCAAAGATTTTATCTCTTTTACTCACACAGGGGCAAAAAGCAAATAATTG
GGGAAGCCCTTACAAATCTAATGGATGTGGCATGGTCTTTCTCAAAATTCACACCTTGCAAGTCATCAG
AGAAGTCATACTAAAGAGAAACCTTACAAATGTTATGAGTGTGGCAAAGCCTTTAGAACAGTTCAAACC
TAACTACCCATCAGGTGATCCATACTGGCGAAAAACGTTACAAATGTAATGAGTGTGGTAAGGTCTTTAG
TCGAAATTCACAACTCTCACAACATCAGAAAAATCACACTGGAGAGAAACCTTATAAATGTAACGAATGT
GGCAAGGTCTTCACTCAGAATTCACACCTTGTAAAGACATCGAGGAATTCATACTGGAGAGAAACCTTACA
AGTGAATGAGTGTGGGAAAGCCTTTAGAGCTCGTTCAAGCTTAGCTATCCATCAGGCAACCCACAGTGG
AGAAAAACCTTACAAATGTAATGAATGTGGCAAGGTCTTCACTCAAAATTCACACCTTACAAATCACTGG
AGAATTCACACTGGAGAGAAACCTTACAAGTGAATGAGTGCAGGCAAGCCTTTGGTGTTCGTTCAAGCC
TAGCTATTCATCTGGTAATTCACACCGAGAGAAAGCCTTACAAATGTCATGAATGCAGGCAAGGTCTTTAG
GCGTAATTCACACCTTGCAAGGCATCAGCTAATTCATACTGGAGAGAAACCTTATAAGTGAATGAGTGT
GGCAAAGCCTTTAGAGCACATTCAAACCTAACTACCCATCAGGTGATCCATACTGGAGAGAAAGCCTTACA
AATGTAATGAATGTGGCAAGGTCTTCACTCAAAATTCACACCTTGCAAAATCATCAAGAATTCATACTGG
AGTGAAGCCTTATATGTGAATGAGTGCAGGCAAGCCTTCAGTGTGATTCAGCCTAACTACCCATCAG
GTCATCCATACTGGAGAGAAACCTTACAAATGTAATGAGTGTGGCAAGGTCTTCACTCAGAATTCACACC
TTGCAAGACATCGGGGAATTCATACTGGAGAGAAACCTTATAAATGTAATGAATGTGGCAAGGTCTTTAG
GCATAATTCATACCTTTCAAGGCATCAGCGAATTCATACTGGAGAGAAACCTTACAAGTATAATGAGTAT
GGCAAAGCCTTTAGTGAACATTCAAACCTAACTACCCATCAGGTGATCCATACTGGTGA AAAACCTTACA
AATGTAATGAGTGTGGCAAGGTCTTCACTCAGAATTCACACCTTGCAAGACATCGGAGAGTTCATACTGG
AGGTAAACCTTACCAGTGAATGAATGTGGCAAAGCCTTTAGTCAAACATCAAAGCTTGCAAGGCATCAG
AGAGTTCATACTGGAGAGAAACCATATGAGTGAATCAGTGTGGGAAAGCCTTTAGTGTCCGTTCAAGCC
TAACTACCCATCAGGCAATCCATACTGGAAAAAACCTTACAAATGCAATGAGTGTGGGAAAGGTCTTAC
TCAGAATTCACACCTTGCAAGACATCGGGGAATTCATACTGGAGAGAAACCTTACAAGTGAATGAGTGT
GGCAAAGCCTTTAGTCAAACCTTCAAACCTTGCAAGGCATCAGAGAATTCATACCGAGAGAAACCATATG
AGTGTGGGAAACCTTTAGTATCTGTTCAAGCCTAACTACCCATCAGACAATCCATACTGGTGGGAAAC
TTACAAATGTAACGTGTGGAAAGTTCTAAAGTCAGAGTTCAAACCTTGCAAGCCATCACAGAATTCA

ACGCGTACGCGGCCGCTCGAGCAGAAACTCATCTCAGAAGAGGATCTGGCAGCAATGATATCTGGATT
ACAAGGATGACGACGATAAGGTTTAA

Protein Sequence: >RC213917 representing NM_032584
Red=Cloning site Green=Tags(s)

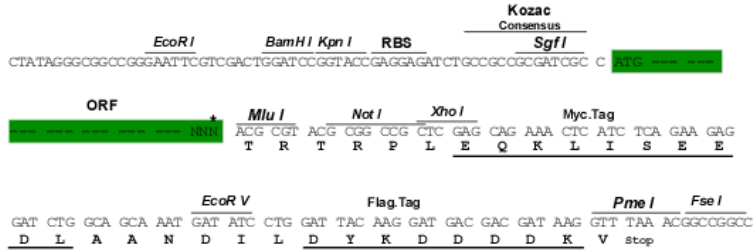
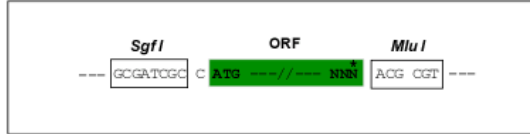
MALTQGQVTFRDVAIEFSQEWTCLDPAQRTL YRDVMLENYRNLASLGISCFDLIIISMLEQGKEPFTLE
SQVQIAGNPDGWEWIKAVITALSSEFVMKDLLHKGKSNTEGEVFQTVMLERQESQDIEGCSFREVQKNTHG
LEYQCRDAEGNYKGVLLTQEGNLTHGRDEHDKRDARNKLIKQNLGLSLQSHLPELQLFQYEGKIYECNQV
EKSFNNNSVSPQMPYNVKTHISKKYLKDFISSLLL TQGQKANNWGSPPYKSNCGMVFPPQNSHLASHQ
RSHTKEKPYKCYECGKAFRTSNLTTHQVIHTGEKRYKCNECGKVF SRNSQLSQHQKIHTGEKPYKCNEC
GKVFTQNSHLVRHRGIHTGEKPYKCNECGKAFRRARSSLAIHQATHSGEKPYKCNECGKVFTQNSHLTNHW
RIHTGEKPYKCNECGKAFGVRSSLAIHLVIHTGEKPYKCECGKVFRRNSHLARHQLIHTGEKPYKCNEC
GKAFAHNSLTTHQVIHTGEKPYKCNECGKVFTQNSHLANHQRIHTGVKPYMCNECGKAFSVYSSLTTHQ
VIHTGEKPYKCNECGKVFTQNSHLARHRGIHTGEKPYKCNECGKVFRRHNSYL SRHQRIHTGEKPYKNEY
GKAFSEHNSLTTHQVIHTGEKPYKCNECGKVFTQNSHLARHRRVHTGGKPYQCNECGKAFSQTSLARHQ
RVHTGEKPYECNQCCKAFSVRSSLTTHQAIHTGKPYKCNECGKVFTQNSHLARHRGIHTGEKPYKCNEC
GKAFSQTSLARHQRIHTGEKPYECGKPFSSICSSLTTHQT IHTGGKPYKCNVWVVKLSEFKPCKPSQNS

TRTRPLEQKLI SEEDLAANDILDYKDDDDKV

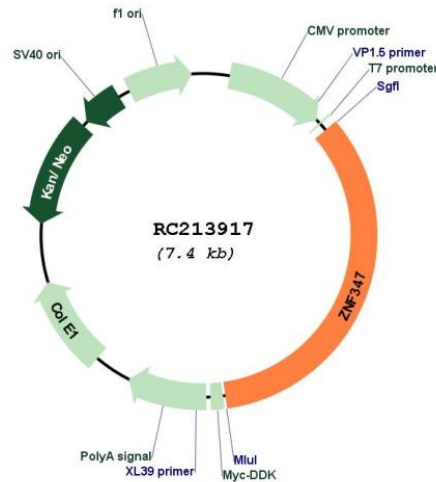
Restriction Sites: Sgfl-MluI

Cloning Scheme:

Cloning sites used for ORF Shutting:



* The last codon before the Stop codon of the ORF

Plasmid Map:


ACCN: NM_032584

ORF Size: 2517 bp

OTI Disclaimer: The molecular sequence of this clone aligns with the gene accession number as a point of reference only. However, individual transcript sequences of the same gene can differ through naturally occurring variations (e.g. polymorphisms), each with its own valid existence. This clone is substantially in agreement with the reference, but a complete review of all prevailing variants is recommended prior to use. [More info](#)

OTI Annotation: This clone was engineered to express the complete ORF with an expression tag. Expression varies depending on the nature of the gene.

Components: The ORF clone is ion-exchange column purified and shipped in a 2D barcoded Matrix tube containing 10ug of transfection-ready, dried plasmid DNA (reconstitute with 100 ul of water).

Reconstitution Method:

1. Centrifuge at 5,000xg for 5min.
2. Carefully open the tube and add 100ul of sterile water to dissolve the DNA.
3. Close the tube and incubate for 10 minutes at room temperature.
4. Briefly vortex the tube and then do a quick spin (less than 5000xg) to concentrate the liquid at the bottom.
5. Store the suspended plasmid at -20°C. The DNA is stable for at least one year from date of shipping when stored at -20°C.

RefSeq: [NM_032584.3](#)

RefSeq Size: 4242 bp

RefSeq ORF: 2520 bp

Locus ID: 84671

UniProt ID: [Q96SE7](#)

Cytogenetics:	19q13.42
Domains:	KRAB, zf-C2H2
Protein Families:	Transcription Factors
MW:	95.8 kDa
Gene Summary:	May be involved in transcriptional regulation.[UniProtKB/Swiss-Prot Function]