

Product datasheet for **RC213915**

TRIM14 (NM_033220) Human Tagged ORF Clone

Product data:

Product Type:	Expression Plasmids
Product Name:	TRIM14 (NM_033220) Human Tagged ORF Clone
Tag:	Myc-DDK
Symbol:	TRIM14
Synonyms:	KIAA0129
Mammalian Cell Selection:	Neomycin
Vector:	pCMV6-Entry (PS100001)
E. coli Selection:	Kanamycin (25 ug/mL)



[View online »](#)

ORF Nucleotide Sequence:

>RC213915 representing NM_033220
 Red=Cloning site Blue=ORF Green=Tags(s)

CTATAGGGCGGCCGGGAATTCGTCGACTGGATCCGGTACCGAGGAGATCTGCCGCCGCGATCGCCGGCGC
 GCC

ATGGCGGGCGCGCGACCGGGAGCCGACCCTGGGAGTTCGAGCTTGTGAGGGATGCGGCTGGCGCT
 GCCCGGAGCATGGCGACCGCGTGGCTGAGCTTCTGTGCGCCGCTGCCGCCGCTGCGTGTGCGCGCTTTG
 CCCGGTGTGGGCGCGCACCGTGGCCACCTGTGGCCTGGCGCTGGAGGCAGCGGTGCACGTGCAGAAA
 CTCAGCCAAGAATGTTTAAAGCAGCTGGCAATCAAGAAGCAGCAGCACATTGACAACATAACCCAGATAG
 AAGATGCCACCGAGAAGCTCAAGGCTAATGCAGAGTCAAGTAAAACCTGGCTGAAGGGGAAATTCAGTGA
 ACTCAGATTACTACTTGACGAAGAGGAAGCGCTGGCCAAGAAATTCATTGATAAAAAACACGCAGCTTACC
 CTCCAGGTGTACAGGGAACAAGCTGACTCTTGCAGAGAGCAACTTGACATCATGAATGATCTCTCCAACA
 GGGTCTGGAGTATCAGCCAGGAGCCGATCCTGTCCAGAGGCTTCAGGCATACACGGCCACCGAGCAGGA
 GATGCAGCAGCAGATGAGCCTCGGGGAGCTGTGCCATCCCGTGCCCTCTCCTTTGAGCCGCTCAAGAGC
 TTCTTTAAGGGCCTCGTGAAGCCGTGGAGAGTACATTACAGACGCCATTGGACATTCGCCTTAAGGAAA
 GCATAAAGTCCAGCTCTCAGACCTTCCAGCACAAGCCAGGTACCTTGTGAAAACCAGCCCTCACC
 AGAGCGATCGCTATTGCTGAAATACGCGCGCACGCCACGCTGGATCCTGACACGATGCACGCGCGCCTG
 CGCCTGTCCGCGATCGCCTGACGGTGCCTGCGGCCTGCTGGGAGCCTGGGGCCCGTGCCCGTGTGC
 GGTTTCGACGCGCTCTGGCAAGTGTGGCTGCTGACTGCTTCGCCACCGCCGCCACTACTGGGAGTTGA
 CGTGCAGGAGGCGGGCGCCGGCTGGTGGTGGGCGCGCCTACGCTCCCTTCGGCGCCGCGGGGCTCG
 GCCGCCCGCCCTGGGCTGCAACCGCCAGTCTGGTGCCTCAAGCGCTACGACCTTGAGTACTGGGCT
 TCCAGCAGCGCCAGCGCAGCCGCTCGGGCCCGCGCAGCCTCGACCGGCTCGGCGTCTCTCTGGACTA
 CGAGCCCGCGCTCTCGCTTCTACGACGTGACGGCGGATGAGCCACCTGCATACCTTCGCGCCACG
 TTCAGGAGCGCTCTACCCGGCCTGCGGCTCTGGGAGGGGCCATCAGCATCCCCGGCTGCC

ACGCGTACGCGCGCGCTCGAGCAGAACTCATCTCAGAAGAGGATCTGGCAGCAATGATATCCTGGATT
 ACAAGGATGACGACGATAAGGTTTAA

Protein Sequence:

>RC213915 representing NM_033220
 Red=Cloning site Green=Tags(s)

MAGAATGSRTPGRSELVEGCGWRCPEHGDRVAELFCRRCRRCVLCALCPVLGAHRGHPVGLALEAAVHVQK
 LSQECLKQLAIKKQQHIDNITQIEDATEKLKANAESSKTWLKGFTELRLLLDEEEALAKKFIDKNTQLT
 LQVYREQADSCREQLDIMNDLSNRVWSISQEPDPVQRLQAYTATEQEMQQMSLGECHPVPLSFEPVKS
 FFKGLVEAVESTLQTPLDIRLKEINCLSDPSSTKPGTLLKTSPPERSLLKLYARTPTLDPDTMHARL
 RLSADRLTVRCGLLGSGLGPPVLRFDALWQVLARDFATGRHYWEVDVQEAGAGWVWGAAYASLRRRGAS
 AAARLGCNRQSWCLKRYDLEYWAFHGGQRSLRPRDDLDRLVFLDYEAGVLAFLYDVTGGMSHLHTFRAT
 FQEPLYPALRLWEGAISIPRLP

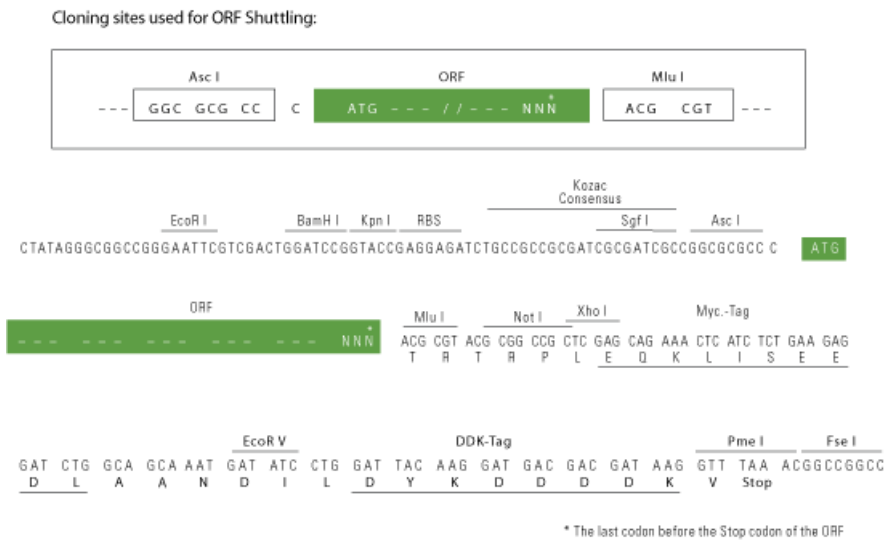
TRTRPLEQKLISEEDLAANDILDYKDDDDKV

Chromatograms:

https://cdn.origene.com/chromatograms/mg3439_g03.zip

Restriction Sites:

Ascl-MluI

Cloning Scheme:


ACCN: NM_033220

ORF Size: 1326 bp

OTI Disclaimer: The molecular sequence of this clone aligns with the gene accession number as a point of reference only. However, individual transcript sequences of the same gene can differ through naturally occurring variations (e.g. polymorphisms), each with its own valid existence. This clone is substantially in agreement with the reference, but a complete review of all prevailing variants is recommended prior to use. [More info](#)

OTI Annotation: This clone was engineered to express the complete ORF with an expression tag. Expression varies depending on the nature of the gene.

Components: The ORF clone is ion-exchange column purified and shipped in a 2D barcoded Matrix tube containing 10ug of transfection-ready, dried plasmid DNA (reconstitute with 100 ul of water).

Reconstitution Method:

1. Centrifuge at 5,000xg for 5min.
2. Carefully open the tube and add 100ul of sterile water to dissolve the DNA.
3. Close the tube and incubate for 10 minutes at room temperature.
4. Briefly vortex the tube and then do a quick spin (less than 5000xg) to concentrate the liquid at the bottom.
5. Store the suspended plasmid at -20°C. The DNA is stable for at least one year from date of shipping when stored at -20°C.

RefSeq: [NM_033220.1](#), [NP_150089.1](#)

RefSeq Size: 1789 bp

RefSeq ORF: 1328 bp

Locus ID: 9830

Cytogenetics: 9q22.33

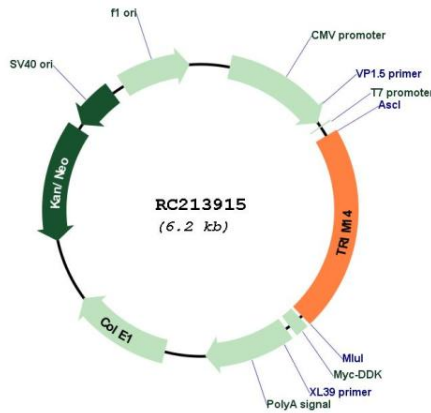
Domains: zf-B_box, SPRY, PRY

Protein Families: Druggable Genome

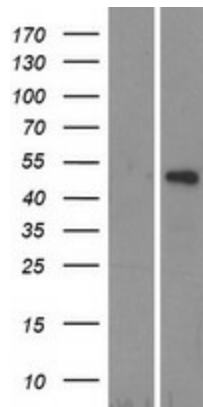
MW: 49.6 kDa

Gene Summary: The protein encoded by this gene is a member of the tripartite motif (TRIM) family. The TRIM motif includes three zinc-binding domains, a RING, a B-box type 1 and a B-box type 2, and a coiled-coil region. The protein localizes to cytoplasmic bodies and its function has not been determined. Alternative splicing results in multiple transcript variants. [provided by RefSeq, Mar 2010]

Product images:



Circular map for RC213915



Western blot validation of overexpression lysate (Cat# [LY415001]) using anti-DDK antibody (Cat# [TA50011-100]). Left: Cell lysates from untransfected HEK293T cells; Right: Cell lysates from HEK293T cells transfected with [RC214697] using transfection reagent MegaTran 2.0 (Cat# [TT210002]).