

Product datasheet for **RC213911**

KIF3B (NM_004798) Human Tagged ORF Clone

Product data:

Product Type:	Expression Plasmids
Product Name:	KIF3B (NM_004798) Human Tagged ORF Clone
Tag:	Myc-DDK
Symbol:	KIF3B
Synonyms:	FLA8; HH0048; KLP-11; RP89
Mammalian Cell Selection:	Neomycin
Vector:	pCMV6-Entry (PS100001)
E. coli Selection:	Kanamycin (25 ug/mL)



[View online »](#)

ORF Nucleotide Sequence:

>RC213911 representing NM_004798
 Red=Cloning site Blue=ORF Green=Tags(s)

TTTTGTAATACGACTCACTATAGGGCGGCCGGGAATTCGTCGACTGGATCCGGTACCGAGGAGATCTGCC
 GCC**CGCATCGCC**

ATGTCAAAGTTGAAAAGCTCAGAGTCAGTCAGGGTGGTGGTTCGCTGTCGGCCCATGAATGGCAAGGAAA
 AGGCTGCTTCGTATGACAAAGTGGTGGATGTGGATGTTAAGCTGGGGCAGGTGTCTGTGAAGAACCCCAA
 AGGGACGGCCCATGAAATGCCAAAGACCTTCACCTTTGATGCCGTCTATGACTGGAATGCCAAGCAGTTT
 GAACTGTACGATGAGACGTTCCGACCCTTGTGACTCTGTCCTGCAAGGTTTCAATGGAACATTTTTG
 CCTATGGACAACTGGGACAGGAAAAACCTACACCATGGAAGGAATCCGTGGTGACCCTGAAAAAGAGG
 AGTCATTCCTAACTATTTGACCATATCTTACCCACATCTCTCGATCCCAGAATCAACAATACCTGGTC
 AGGGCTTCTTACTTAGAGATCTACCAGGAGGAGATCCGAGATTTGCTCTCAAAGGATCAGACAAAAGGC
 TTGAGCTCAAAGAGAGGCTGACACAGGAGTGTATGTGAAAGACCTGTCTTCTTTGTCCAAAGAGTGT
 GAAGGAGATAGAGCATGTGATGAATGTGGGAACCAAGCGTTCTGTCGGTGTACCAACATGAACGAG
 CACAGCTCGCGTTCTCATGCAATTTTCGTTATCACTATTGAGTGCAGCGAGGTGGGCCTCGATGGTGAAA
 ACCACATCCGTGTAGGAAAATTGAACCTTGTAGATCTTGTGTCGACGGAACGGCAAGCAAGACCGCGC
 ACAAGGGGAGAGATTAAGAAGCTACCAAGATCAACCTCTCCCTTTCCGCTTTGGGTAATGTCTCTCT
 GCTCTAGTGGACGGCAAAAGCACTCACATTCATATCGGGACTCAAAGCTTACCAGGCTCCTCCAAGATT
 CCCTTGGTGGCAATGCCAAGACTGTGATGGTGGCAACGTGGGGCCTGCCTTTACAACGTAGAAGAGAC
 TCTGACCACTCTGCGATATGCCAACCGTCCAAAAACATTAAGAACAACCAAGGGTCAATGAGGACCCC
 AAGGATGCCCTCCTTCGAGAATTCAGGAAGAGATTGCTCGGCTCAAGGCCAGCTGGAAAAACGGTCCA
 TTGGTAGGAGGAAGGGCGAGAGAAGCGGAGGGAAGGTGGTGGCAGTGGTGGGGTGGGGAAGAGGAGG
 GGAGGAGGAGAAGAGGGTGGAGGAGGAAGGGGATGATAAGGATGATTACTGGCGGAACAGCAAGAAAA
 CTGGAGATTGAGAAGCGGCCATTGTAGAGGATCACAGCTTGGTTCAGAGGAGAAGATGAGGCTGCTGA
 AGGAGAAAAGAAAAAGATGGAGGACCTGCGGCGGGAGAAGGATGCTGCCGAGATGCTGGGCGCCAAGAT
 CAAGGCCATGGAGAGTAAGTTGCTTGTGGAGGAAAAATATAGTAGATCATACGAATGAACAGCAGAAA
 ATCCTGGAGCAGAAACGACAGGAAATGCAGAGCAGAAACGTGAGAAAGAGAAAATCCAGCAACAGATGG
 AAAGTCGAGATGAGGAGACCTTGAACCTAAAGAGACATACAGCTCATTGCAGCAAGAGGTGGACATCAA
 GACCAAAAACTCAAAAAGCTCTTCTCCAAGCTTCAGGCAGTGAAGGCTGAGATCCATGACCTCCAAGAA
 GAACACATCAAGGAGCGCAAGAGCTAGAGCAGACTCAGAATGAGCTCACCAGGGAGCTGAAACTCAAGC
 ATCTTATTATAGAAAACCTTATCCCTCTGGAAGAAAAAGTAAAATTATGAATAGAGCCTTCTTTGATGA
 AGAGGAAGATCATTGAAACTACATCTATAACCAGACTGGAGAACCAGCAGATGATGAAGCGGCCAGTC
 TCAGCCGTGGGATATAAGAGACCATTGAGCCAGCACGCAAGAATGTCCATGATGATTCGTCAGAGGCC
 GATATAGGGCAGAAAACATTGTGCTGTTAGAGCTGGACATGCCAGCCGGACCACCAGAGACTATGAGGG
 TCCAGCCATTGCCCAAGGTCCAGGCTGCATTGGATGCGGCTCTGCAGGATGAAGATGAGATACAGGTG
 GATGCATCATCTTTGAAAGCACTGCAATAAGAAATCCAAGGCCAGGCCTAAAAGTGGAAAGGAGTCGG
 GATCCTCCTCTTCTCAGGAACCCCTGCATCTCAGCTTTATCCACAGTCTCGGGGCTGGTTCCAAA
 G

ACGCGTACGCGGCCGCTCGAGCAGAAACTCATCTCAGAAGAGGATCTGGCAGCAATGATATCCTGGATT
 ACAAGGATGACGACGATAAGGTTTAA

Protein Sequence: >RC213911 representing NM_004798
Red=Cloning site Green=Tags(s)

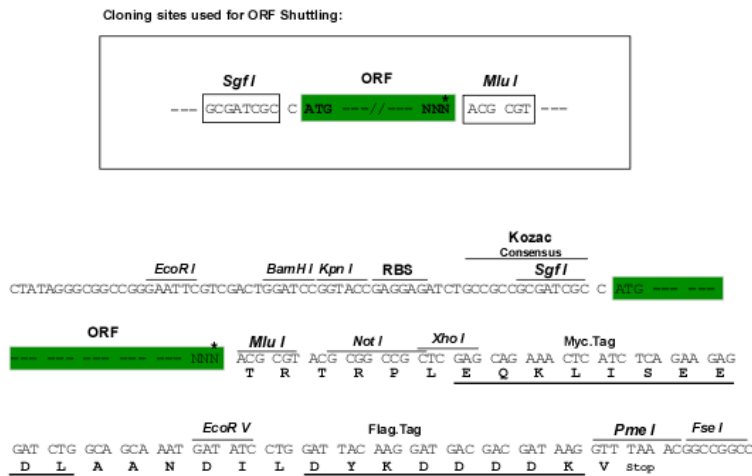
```
MSKLLKSSSESVRVVRCRPMNGKEKAASYDKVVDVVKLGQVSVKNPKGTAHEMPKTFTFDAVYDWNKQF
ELYDETRPLVDSVLQGFNGTIFAYGQTGTGKTYTMEGIRGDPEKRGVIPNSFDHIFTHISRSQNQQYL
RASYLEIYQEEIRDLLSKDQTKRLELKERPDTGVVYKDLSSFVTKSVKEIEHVMNVGNQNRSVGATNMNE
HSSRSHAI FVITIECSEVGLDGENHIRVGKLNLDLAGSERQAKTGAQGERLKEATKINLSLSALGNVIS
ALVDGKSTHIPPYRDSKLRLLQDSLGGNAKTMVANVPASYNVEETLTLRYANRAKNIKPKRVNEDP
KDALLREFQEEIARLKAQLEKRSIGRRKRREKRREGGSGGGGEEEEEEEEEGEEGDDKDDYWREQQEK
LEIEKRAIVEDHSLVAEEKMRLLEKEKEMEDLRREKDAEMLGAKIKAMESKLLVGGKNIVDHTNEQQK
ILEQKRQEIAEQKRREREIQQQMESRDEETLELKETYSLQEQVDIKTKLKLKFLSKLQAVKAEIHDLQE
EHIKERQELEQTQNELTRELKHLIENFIPLLEKSKIMNRAFFDEEDHWKLPITRLENQQMMKRPV
SAVGYKRPLSQHARMSMIRPEARYAENIVLLELDMPSTRTRDYEGPAIAPKVQAALDAALQDEDEIQV
DASSFESTANKKSKARPKSGRKS GSSSSSSSGTPASQLYPQSRGLVPK
```

TRTRPLEQKLI SEEDLAANDILDYKDDDDKV

Chromatograms: https://cdn.origene.com/chromatograms/mk6714_f11.zip

Restriction Sites: SgfI-MluI

Cloning Scheme:



* The last codon before the Stop codon of the ORF

ACCN: NM_004798

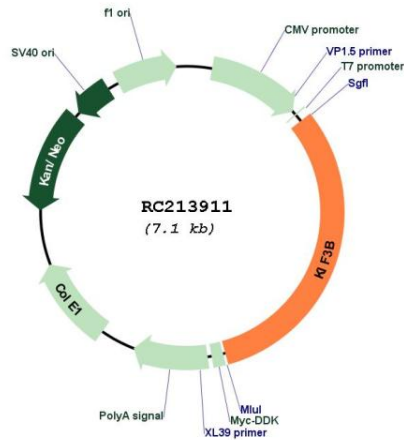
ORF Size: 2241 bp

OTI Disclaimer: The molecular sequence of this clone aligns with the gene accession number as a point of reference only. However, individual transcript sequences of the same gene can differ through naturally occurring variations (e.g. polymorphisms), each with its own valid existence. This clone is substantially in agreement with the reference, but a complete review of all prevailing variants is recommended prior to use. [More info](#)

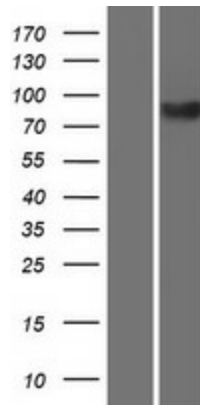
OTI Annotation: This clone was engineered to express the complete ORF with an expression tag. Expression varies depending on the nature of the gene.

Components:	The ORF clone is ion-exchange column purified and shipped in a 2D barcoded Matrix tube containing 10ug of transfection-ready, dried plasmid DNA (reconstitute with 100 ul of water).
Reconstitution Method:	<ol style="list-style-type: none">1. Centrifuge at 5,000xg for 5min.2. Carefully open the tube and add 100ul of sterile water to dissolve the DNA.3. Close the tube and incubate for 10 minutes at room temperature.4. Briefly vortex the tube and then do a quick spin (less than 5000xg) to concentrate the liquid at the bottom.5. Store the suspended plasmid at -20°C. The DNA is stable for at least one year from date of shipping when stored at -20°C.
RefSeq:	NM_004798.4
RefSeq Size:	6103 bp
RefSeq ORF:	2244 bp
Locus ID:	9371
UniProt ID:	O15066
Cytogenetics:	20q11.21
Domains:	kinesin
Protein Families:	Druggable Genome
MW:	84.9 kDa
Gene Summary:	The protein encoded by this gene acts as a heterodimer with kinesin family member 3A to aid in chromosome movement during mitosis and meiosis. The encoded protein is a plus end-directed microtubule motor and can interact with the SMC3 subunit of the cohesin complex. In addition, the encoded protein may be involved in the intracellular movement of membranous organelles. This protein and kinesin family member 3A form the kinesin II subfamily of the kinesin superfamily. [provided by RefSeq, Jul 2008]

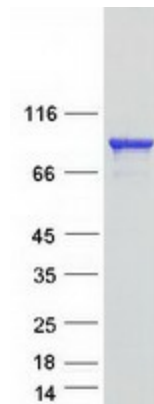
Product images:



Circular map for RC213911



Western blot validation of overexpression lysate (Cat# [LY417733]) using anti-DDK antibody (Cat# [TA50011-100]). Left: Cell lysates from untransfected HEK293T cells; Right: Cell lysates from HEK293T cells transfected with RC213911 using transfection reagent MegaTran 2.0 (Cat# [TT210002]).



Coomassie blue staining of purified KIF3B protein (Cat# [TP313911]). The protein was produced from HEK293T cells transfected with KIF3B cDNA clone (Cat# RC213911) using MegaTran 2.0 (Cat# [TT210002]).