

## Product datasheet for RC213907

### ETV2 (NM\_014209) Human Tagged ORF Clone

#### Product data:

Product Type:	Expression Plasmids
Product Name:	ETV2 (NM_014209) Human Tagged ORF Clone
Tag:	Myc-DDK
Symbol:	ETV2
Synonyms:	ER71; ETSRP71
Mammalian Cell Selection:	Neomycin
Vector:	pCMV6-Entry (PS100001)
E. coli Selection:	Kanamycin (25 ug/mL)
ORF Nucleotide Sequence:	>RC213907 representing NM_014209 Red=Cloning site Blue=ORF Green=Tags(s)

TTTTGTAATACGACTCACTATAGGGCGGCCGGAATTCGTCGACTGGATCCGGTACCGAGGAGATCTGCC  
GCC**CGATCGCC**

ATGGACCTGTGGAACGGGATGAGGCATCCCCACAGGAAGTGCCTCCAGGGAACAAGCTGGCAGGGCTTG  
AAGGAGCCAAATTAGGCTTCTGTTTCCCTGATCTGGCACTCCAAGGGGACACGCCGACAGCGACAGCAGA  
GACATGCTGGAAGGTACAAGCTCATCCCTGGCAAGCTTCCCACAGCTGGACTGGGGCTCCGCGTACTG  
CACCCAGAAGTTCATGGGGGGCGGAGCCGACTCTCAGGCTCTCCGTTGGTCCGGGGACTGGACAGACA  
TGGCGTGACAGCCTGGGACTCTTGGAGCGGCGCCTCGCAGACCCTGGGCCCCGCCCTCTCGGCCCGGG  
CCCCATCCCCGCCCGGCTCCGAAGGCCCGCGGGCCAGAAGTGCCTCCCGTGGCGGGAGAGGCCACC  
TCGTGGTTCGCGGCCCCAGGCCCGCGGGAGCAACACCAGCTGGGACTGTTCTGTGGGGCCCGACGGCGATA  
CCTACTGGGGCAGTGGCCTGGGGGGGAGCCGCGCACGGACTGTACCATTTCTGGGGCGGGCCCGCGGG  
CCCGGACTGTACCACCTCCTGGAACCGGGGGTGCATGCGGGTGGCACCCTCTTTGAAGCGGTACCA  
AGCTCAGCTCTCACCGTTTGCTCCGAACCGAGCCCGCAGTCGGACCGTCCAGTTTGGCTCGATGCCCA  
AACTAACCACCGAGGTCCATTAGCTGTGGCAGTTCCTCTGGAGTGTCCACGACGGGGCGCGTAG  
CAGCTGCATCCGTTGGACTGGCAACAGCCGCGAGTTCAGCTGTGCGACCCAAAGAGGTGGCTCGGCTG  
TGGGGCGAGCGCAAGAGAAAGCCGGGCATGAATTACGAGAAGCTGAGCCGGGGCCTTCGCTACTACTATC  
GCCGCGACATCGTGCACAAGAGCGGGGGCGAAAAGTACACGTACCGCTTCGGGGGCCCGCTGCCAGCCT  
AGCCTATCCGACTGTGCGGGAGCGGACGGGGAGCAGAGACACAA

**ACGCGT**ACGCGGCCGCTCGAGCAGAAACTCATCTCAGAAGAGGATCTGGCAGCAAATGATATCCTGGATT  
ACAAGGATGACGACGATAAGGTTTAA



[View online »](#)

**Protein Sequence:** >RC213907 representing NM\_014209  
Red=Cloning site Green=Tags(s)

MDLWNWDEASPQEVPPGNKLAGLEGAKLGFCDLALQGDTPATAETCWKGTSSSLASFPQLDWGSALL  
 HPEVWPWAEPDSQALPWSGDWTDMACTAWDSWSGASQTLGPAPLPGPIPAAGSEGAAGQNCVPVAGEAT  
 SWSRAQAAGSNTSWDCSVGPDGDTYWGSLGGEPRTDCTISWGGPAGPDCTTSWNPGLHAGGTTSLKRYQ  
 SSALTVCSPEPSPQSDRASLARCPTNHRGPIQLWQFLLELLHDGARSSCIRWTGNSREFQLCDPKEVARL  
 WGERKRKPGMNYEKL SRGLRYYYRRDIVRKS GGRKYTYRFGGRVPSLAYPDCAGGGRGAETQ

TRTRPLEQKLISEEDLAANDILDYKDDDDKV

**Chromatograms:** [https://cdn.origene.com/chromatograms/mk8121\\_b07.zip](https://cdn.origene.com/chromatograms/mk8121_b07.zip)

**Restriction Sites:** SgfI-MluI

**Cloning Scheme:**

Cloning sites used for ORF Shuttling:



\* The last codon before the Stop codon of the ORF

**ACCN:** NM\_014209

**ORF Size:** 1026 bp

**OTI Disclaimer:** The molecular sequence of this clone aligns with the gene accession number as a point of reference only. However, individual transcript sequences of the same gene can differ through naturally occurring variations (e.g. polymorphisms), each with its own valid existence. This clone is substantially in agreement with the reference, but a complete review of all prevailing variants is recommended prior to use. [More info](#)

**OTI Annotation:** This clone was engineered to express the complete ORF with an expression tag. Expression varies depending on the nature of the gene.

**Components:** The ORF clone is ion-exchange column purified and shipped in a 2D barcoded Matrix tube containing 10ug of transfection-ready, dried plasmid DNA (reconstitute with 100 ul of water).

**Reconstitution Method:**

1. Centrifuge at 5,000xg for 5min.
2. Carefully open the tube and add 100ul of sterile water to dissolve the DNA.
3. Close the tube and incubate for 10 minutes at room temperature.
4. Briefly vortex the tube and then do a quick spin (less than 5000xg) to concentrate the liquid at the bottom.
5. Store the suspended plasmid at -20°C. The DNA is stable for at least one year from date of shipping when stored at -20°C.

**RefSeq:** [NM\\_014209.4](#)

**RefSeq Size:** 1490 bp

**RefSeq ORF:** 1029 bp

**Locus ID:** 2116

**UniProt ID:** [O00321](#)

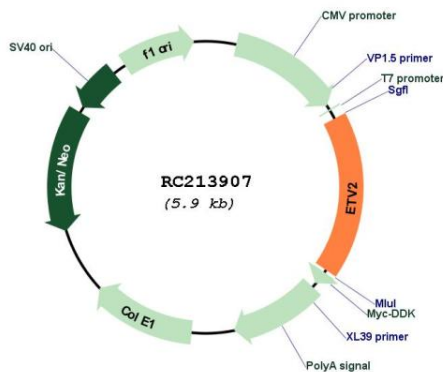
**Cytogenetics:** 19q13.12

**Protein Families:** ES Cell Differentiation/IPS

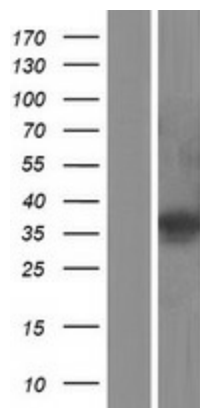
**MW:** 37.1 kDa

**Gene Summary:** Binds to DNA sequences containing the consensus pentanucleotide 5'-CGGA[AT]-3'.  
[UniProtKB/Swiss-Prot Function]

**Product images:**



Circular map for RC213907



Western blot validation of overexpression lysate (Cat# [LY415445]) using anti-DDK antibody (Cat# [TA50011-100]). Left: Cell lysates from untransfected HEK293T cells; Right: Cell lysates from HEK293T cells transfected with RC213907 using transfection reagent MegaTran 2.0 (Cat# [TT210002]).