

Product datasheet for RC213906

WNT5B (NM_032642) Human Tagged ORF Clone

Product data:

Product Type:	Expression Plasmids
Product Name:	WNT5B (NM_032642) Human Tagged ORF Clone
Tag:	Myc-DDK
Symbol:	WNT5B
Mammalian Cell Selection:	Neomycin
Vector:	pCMV6-Entry (PS100001)
E. coli Selection:	Kanamycin (25 ug/mL)
ORF Nucleotide Sequence:	>RC213906 representing NM_032642 Red=Cloning site Blue=ORF Green=Tags(s)

TTTTGTAATACGACTCACTATAGGGCGGCCGGAATTCGTCGACTGGATCCGGTACCGAGGAGATCTGCC
GCC**CGATCGCC**

ATGCCAGCCTGCTGCTGCTGTTACGGCTGCTCTGCTGTCCAGCTGGGCTCAGCTTCTGACAGACGCCA
ACTCCTGGTGGTCATTAGCTTTGAACCCGGTGCAGAGACCCGAGATGTTTATCATCGGTGCCAGCCCGT
GTGCAGTCAGCTTCCCGGGCTCTCCCTGGCCAGAGGAAGCTGTGCCAATTGTACCAGGAGCACATGGCC
TACATAGGGGAGGGAGCCAAGACTGGCATCAAGGAATGCCAGCACCAAGTCCGGCAGCGGGTGGAAAT
GCAGCACAGCGGACAACGCATCTGTCTTTGGGAGAGTCATGCAGATAGGCAGCCGAGAGACCGCTTCAC
CCACGCGGTGAGCGCCGCGGGCGTGGTCAACGCCATCAGCCGGGCTGCCGCGAGGGCGAGCTCTCCACC
TGCGGCTGCAGCCGACGCGCGGCCCAAGGACCTGCCCGGGACTGGCTGTGGGCGGCTGTGGGACA
ACGTGGAGTACGGCTACCGCTTCGCCAAGGAGTTTGTGGATGCCCGGAGCGAGAGAAGAACTTTGCCAA
AGGATCAGAGGAGCAGGGCCGGTGTCTATGAACCTGCAAAACAACGAGGCCGGTGCAGGGCTGTGTAT
AAGATGGCAGACGTAGCCTGCAATGCCACGGCTCTCGGGTCTGCAGCTCAAGACCTGCTGGCTGC
AGCTGGCCGAGTCCGCAAGGTCGGGACCGCTGAAGGAGAAGTACGACAGCGCGGCCCATGCGCGT
CACCCGCAAGGGCCGGTGGAGCTGGTCAACAGCCGCTTACCCAGCCCACCCGGAGGACCTGGTCTAT
GTGGACCCAGCCCCGACTACTGCTGCGCAACGAGAGCACGGGCTCCCTGGGCACGAGGGCCGCTCT
GCAACAAGACCTCGGAGGCATGGATGGCTGTGAGCTCATGTGCTGCGGGCGTGGCTACAACAGTTCAA
GAGCGTGCAAGTGGAGCGCTGCCACTGCAAGTCCACTGGTGTCTTCGTGAGGTGTAAGAAGTGCACG
GAGATCGTGGACAGTACATCTGTAAA

ACGCGTACGCGGCCGCTCGAGCAGAACTCATCTCAGAAGAGGATCTGGCAGCAAATGATATCCTGGATT
ACAAGGATGACGACGATAAGGTTTAA



[View online »](#)

Protein Sequence: >RC213906 representing NM_032642
Red=Cloning site Green=Tags(s)

MPSLLLLFTAALLSSWAQLLTDANSWWSLALNPVQRPEMFIIGAQPVCSQLPGLSPGQRKLCQLYQEHMA
 YIGEGAKTGIKECQHQRFRQRRWNCSTADNASVFGVMQIGSRETAFTHAVSAAGVVNAISRACREGELST
 CGCSRTARPKDLPRDWLWGGCGDNVEYGYRFAKEFVDAREREKNFAKGSEEQGRVLMNLQNEAGRRAVY
 KMADVACKCHGVSGSCSLKTCWLQLAEFRKVGDRLEKEKYDSAAAMRVTRKGRLELVNSRF TQPTPEDLVY
 VDPSPDYCLRNSTGSLGTQGRLCNKTSEGMDGCELMCCGRGYNQFKSVQVERCHCKFWCCFVRCKKCT
 EIVDQYICK

TRTRPLEQKLISEEDLAANDILDYKDDDDKV

Chromatograms: https://cdn.origene.com/chromatograms/mg2619_a05.zip

Restriction Sites: Sgfl-MluI

Cloning Scheme:

Cloning sites used for ORF Shuttling:



* The last codon before the Stop codon of the ORF

ACCN: NM_032642

ORF Size: 1077 bp

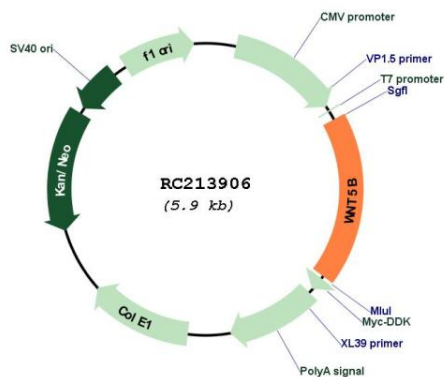
OTI Disclaimer: The molecular sequence of this clone aligns with the gene accession number as a point of reference only. However, individual transcript sequences of the same gene can differ through naturally occurring variations (e.g. polymorphisms), each with its own valid existence. This clone is substantially in agreement with the reference, but a complete review of all prevailing variants is recommended prior to use. [More info](#)

OTI Annotation: This clone was engineered to express the complete ORF with an expression tag. Expression varies depending on the nature of the gene.

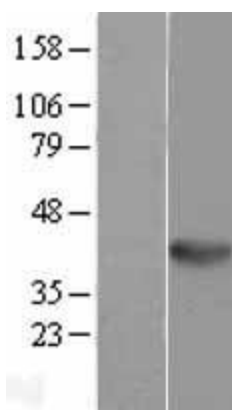
Components: The ORF clone is ion-exchange column purified and shipped in a 2D barcoded Matrix tube containing 10ug of transfection-ready, dried plasmid DNA (reconstitute with 100 ul of water).

Reconstitution Method:	<ol style="list-style-type: none">1. Centrifuge at 5,000xg for 5min.2. Carefully open the tube and add 100ul of sterile water to dissolve the DNA.3. Close the tube and incubate for 10 minutes at room temperature.4. Briefly vortex the tube and then do a quick spin (less than 5000xg) to concentrate the liquid at the bottom.5. Store the suspended plasmid at -20°C. The DNA is stable for at least one year from date of shipping when stored at -20°C.
RefSeq:	NM_032642.3
RefSeq Size:	2251 bp
RefSeq ORF:	1080 bp
Locus ID:	81029
UniProt ID:	Q9H1J7
Cytogenetics:	12p13.33
Domains:	wnt
Protein Families:	Secreted Protein
Protein Pathways:	Basal cell carcinoma, Hedgehog signaling pathway, Melanogenesis, Pathways in cancer, Wnt signaling pathway
MW:	38.5 kDa
Gene Summary:	<p>The WNT gene family consists of structurally related genes which encode secreted signaling proteins. These proteins have been implicated in oncogenesis and in several developmental processes, including regulation of cell fate and patterning during embryogenesis. This gene is a member of the WNT gene family. It encodes a protein which shows 94% and 80% amino acid identity to the mouse Wnt5b protein and the human WNT5A protein, respectively. Alternative splicing of this gene generates 2 transcript variants. [provided by RefSeq, Jul 2008]</p>

Product images:



Circular map for RC213906



Western blot validation of overexpression lysate (Cat# [LY403184]) using anti-DDK antibody (Cat# [TA50011-100]). Left: Cell lysates from untransfected HEK293T cells; Right: Cell lysates from HEK293T cells transfected with RC213906 using transfection reagent MegaTran 2.0 (Cat# [TT210002]).