

Product datasheet for RC213894

TRBP (TARBP2) (NM_134324) Human Tagged ORF Clone

Product data:

Product Type:	Expression Plasmids
Product Name:	TRBP (TARBP2) (NM_134324) Human Tagged ORF Clone
Tag:	Myc-DDK
Symbol:	TRBP
Synonyms:	LOQS; TRBP; TRBP1; TRBP2
Mammalian Cell Selection:	Neomycin
Vector:	pCMV6-Entry (PS100001)
E. coli Selection:	Kanamycin (25 ug/mL)
ORF Nucleotide Sequence:	>RC213894 ORF sequence Red=Cloning site Blue=ORF Green=Tags(s)

TTTTGTAATACGACTCACTATAGGGCGGCCGGAATTCGTCGACTGGATCCGGTACCGAGGAGATCTGCC
GCC**CGGATCGCC**

ATGAGTGAAGAGGAGCAAGGCTCCGGCACTACCACGGGCTGCGGGCTGCCTAGTATAGAGCAAATGCTGG
CCGCCAACCCAGGCAAGACCCCGATCAGCCTTCTGCAGGAGTATGGGACCAGAATAGGGAAGACGCCTGT
GTACGACCTTCTCAAAGCCGAGGGCCAAGCCCACCAGCCTAATTTACCTTCCGGGTACCGTTGGCGAC
ACCAGCTGCACTGGTCAGGGCCCCAGCAAGAAGGCAGCCAAGCACAAAGGCAGCTGAGGTGGCCCTCAAAC
ACCTCAAAGGGGGGAGCATGCTGGAGCCGCCCCGGAGGACAGCAGTTCTTTTTCTCCCCTAGACTCTTC
ACTGCCTGAGGACATTCGGTTTTACTGCTGCAGCAGCTGCTACCCAGTTCATCTGTAGTCCTAACCC
AGGAGCCCCCATGGAAGTGCAGCCCCCTGTCTCCCCTCAGCAGTCTGAGTGCAACCCCGTTGGTGCTC
TGCAGGAGCTGGTGGTGCAGAAAGGCTGGCGGTTGCCGGAGTACACAGTGACCCAGGAGTCTGGGCCAGC
CCACCCGAAAGAATTCACCATGACCTGTGAGTGGAGCGTTTCATTGAGATTGGGAGTGGCACTTCCAAA
AAATTGGCAAAGCGGAATGCGGCGGCCAAAATGCTGCTTCGAGTGCACACGGTGCCTCTGGATGCCCGGG
ATGGCAATGAGGTGGAGCCTGATGATGACCACTTCTCCATTGGTGTGGGCTCCCCTGGATGGTCTTCG
AAACCGGGGCCAGGTTGCACCTGGGATCTCTACGAAATTCAGTAGGAGAGAAGATCCTGTCCCTCCGC
AGTTGCTCCCTGGGCTCCCTGGGTGCCCTGGGCCCTGCCTGCTGCCGTGTCTCAGTGAGCTCTCTGAGG
AGCAGGCCTTTCAGTACGCTACCTGGATATTGAGGAGCTGAGCCTGAGTGGACTCTGCCAGTGCCTGGT
GGAAGTGTCCACCCAGCCGGCCACTGTGTGCATGGCTCTGCAACCCAGGGAGGCAGCCCGTGGTGAG
GCTGCCCGCCGTGCCCTGCAGTACCTCAAGATCATGGCAGGCAGCAAG

ACGCGTACGCGGCCGCTCGAGCAGAAACTCATCTCAGAAGAGGATCTGGCAGCAAATGATATCCTGGATT
ACAAGGATGACGACGATAAGGTTTAA



[View online »](#)

Protein Sequence: >RC213894 protein sequence
Red=Cloning site Green=Tags(s)

MSEEEQSGSTTTGCGLPSEIQMLAANPGKTPISLLQEYGTTRIGKTPVYDLLKAEGQAHQPNTFRVTVGD
 TSCTGQGPSKKAHKAAEVALKHLKGGSMLEPALEDSSSF SPLDSSLPEDIPVFTAAAAATPVPSVVL
 RSPPMELQPPVSPQQSECNVPGALQELVVQKGWRLPEYTVTQESGPAHRKEFTMTCRVERFIEIGSGTSK
 KLAKRNAAKMLLRVHTVPLDARDGNEVEPDDDDHFSIGVGSRLDGLRNRGPGCTWDSL RNSVGEKILSLR
 SCSLGS LGALGPACCRVLS ESEQAFHVS YLDIEELSL SGLCQCLVELSTQPATVCHGSATTREARGE
 AARRALQYLKIMAGSK

TRTRPLEQKLISEEDLAANDILDYKDDDDKV

Chromatograms: https://cdn.origene.com/chromatograms/mk6669_g06.zip

Restriction Sites: SgfI-MluI

Cloning Scheme:



ACCN: NM_134324

ORF Size: 1098 bp

OTI Disclaimer: The molecular sequence of this clone aligns with the gene accession number as a point of reference only. However, individual transcript sequences of the same gene can differ through naturally occurring variations (e.g. polymorphisms), each with its own valid existence. This clone is substantially in agreement with the reference, but a complete review of all prevailing variants is recommended prior to use. [More info](#)

OTI Annotation: This clone was engineered to express the complete ORF with an expression tag. Expression varies depending on the nature of the gene.

Components: The ORF clone is ion-exchange column purified and shipped in a 2D barcoded Matrix tube containing 10ug of transfection-ready, dried plasmid DNA (reconstitute with 100 ul of water).

Reconstitution Method:

1. Centrifuge at 5,000xg for 5min.
2. Carefully open the tube and add 100ul of sterile water to dissolve the DNA.
3. Close the tube and incubate for 10 minutes at room temperature.
4. Briefly vortex the tube and then do a quick spin (less than 5000xg) to concentrate the liquid at the bottom.
5. Store the suspended plasmid at -20°C. The DNA is stable for at least one year from date of shipping when stored at -20°C.

RefSeq Size: 1488 bp

RefSeq ORF: 1038 bp

Locus ID: 6895

UniProt ID: [Q15633](#)

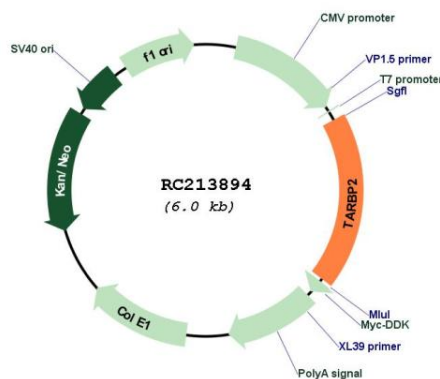
Cytogenetics: 12q13.13

Protein Families: Stem cell - Pluripotency

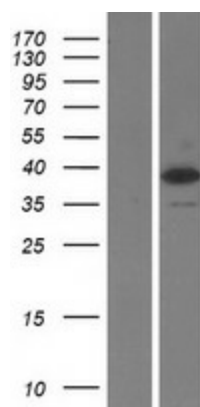
MW: 39 kDa

Gene Summary: HIV-1, the causative agent of acquired immunodeficiency syndrome (AIDS), contains an RNA genome that produces a chromosomally integrated DNA during the replicative cycle. Activation of HIV-1 gene expression by the transactivator Tat is dependent on an RNA regulatory element (TAR) located downstream of the transcription initiation site. The protein encoded by this gene binds between the bulge and the loop of the HIV-1 TAR RNA regulatory element and activates HIV-1 gene expression in synergy with the viral Tat protein. Alternative splicing results in multiple transcript variants encoding different isoforms. This gene also has a pseudogene. [provided by RefSeq, Jul 2008]

Product images:



Circular map for RC213894



Western blot validation of overexpression lysate (Cat# [LY408744]) using anti-DDK antibody (Cat# [TA50011-100]). Left: Cell lysates from untransfected HEK293T cells; Right: Cell lysates from HEK293T cells transfected with [RC213967] using transfection reagent MegaTran 2.0 (Cat# [TT210002]).