

Product datasheet for **RC213887**

NR5A2 (NM_003822) Human Tagged ORF Clone

Product data:

Product Type:	Expression Plasmids
Product Name:	NR5A2 (NM_003822) Human Tagged ORF Clone
Tag:	Myc-DDK
Symbol:	NR5A2
Synonyms:	B1F; B1F2; CPF; FTF; FTZ-F1; FTZ-F1beta; hB1F-2; LRH-1; LRH1
Vector:	pCMV6-Entry (PS100001)
E. coli Selection:	Kanamycin (25 ug/mL)
Cell Selection:	Neomycin



[View online »](#)

ORF Nucleotide Sequence:

>RC213887 representing NM_003822
 Red=Cloning site Blue=ORF Green=Tags(s)

TTTTGTAATACGACTCACTATAGGGCGGCCGGAATTCGTCGACTGGATCCGGTACCGAGGAGATCTGCC
 GCC**CGCATCGCC**

ATGTCCTTAATTTCAGATACTGGGATTTACAAGAGTCTTTAAAGCACGGACTTACACCTATTGTGTCTC
 AATTTAAATGGTGAATTACTCCTATGATGAAGATCTGGAAGAGCTTTGTCCCGTGTGGAGATAAAGT
 GTCTGGGTACCATTATGGGCTCCTCACCTGTGAAAGCTGCAAGGATTTTTTAAGCGAACAGTCCAAAAT
 AATAAAAGGTACACATGTATAGAAAACCAGAACTGCCAAATTGACAAAACACAGAGAAAGCGTTGCCTT
 ACTGTCGTTTTCAAAAATGTCTAAGTGTGGAATGAAGCTAGAAGCTGTAAAGGCGGACCGAATGCGTGG
 AGGAAGGAATAAGTTTGGGCCAATGTACAAGAGAGACAGGGCCCTGAAGCAACAGAAAAAGCCCTCATC
 CGAGCCAATGGACTTAAGCTAGAAGCCATGTCTCAGGTGATCCAAGCTATGCCCTCTGACCTGACCATT
 CCTCTGCAATTCAAAACATCCACTCTGCCTCAAAGGCCACCTCTGAACCATGTGCCTTGCCTCTAC
 AGACTATGACAGAAGTCCCTTTGTAACATCCCCATTAGCATGACAATGCCCCCTCACGGCAGCCTGCAA
 GGTACCAAAACACATGGCCACTTTCCTAGCCGGGCCATCAAGTCTGAGTACCCAGACCCCTATACAGCT
 CACCCGAGTCCATAATGGGCTATTCATATATGGATAGTTACCAGACGAGCTCTCCAGCAAGCATCCACA
 TCTGATACTGGAACCTTTGAAGTGTGAGCCAGATGAGCCTCAAGTCCAGGCTAAAATCATGGCCTATTTG
 CAGCAAGAGCAGGCTAACCGAAGCAAGCACGAAAAGCTGAGCACCTTTGGGCTTATGTGCAAAAATGGCAG
 ATCAAACCTCTTCTCCATTGTGCGAGTGGGCCAGGAGTAGTATCTTCTTCAGAGAACTTAAGGTTGATGA
 CCAATGAAGCTGCTTCAGAAGTCTGGAGTGAAGTCTTAATCCTCGACCACATTTACCGACAAGTGGTA
 CATGGAAAAGGAAGGATCCATCTTCTGGTACTGGGCAACAAGTGGACTATTCCATAATAGCATCACAA
 CCGGAGCCACCCTCAACAACCTCATGAGTATGCACAGGAGTTAGTGGCAAAAACCTCGTCTCTCCAGT
 TGATCAACGAGAGTTCGATGTCTGAAATCTTGGTGTCTTTAGTTTAGATGTCAAAAACCTTGAAAAC
 TTCCAGCTGGTAGAAGGTGCCAGGAACAAGTCAATGCCGCCCTGCTGGACTACACAATGTGTAACCTACC
 CGCAGCAGACAGAGAAATTTGGACAGCTACTTCTTCGACTACCCGAAATCCGGGCCATCAGTATGCAGGC
 TGAAGAATACCTTACTACAAGCACCTGAACGGGGATGTGCCCTATAATAACCTTCTCATTGAAATGTTG
 CATGCCAAAAGAGCA

ACGCGTACGCGGCCGCTCGAGCAGAAACTCATCTCAGAAGAGGATCTGGCAGCAAATGATATCCTGGATT
 ACAAGGATGACGACGATAAGGTTTAA

Protein Sequence:

>RC213887 representing NM_003822
 Red=Cloning site Green=Tags(s)

MSSNSDTGDLQESLKHGLTPIVSQFKMVNYSYDELEELCPVCGDKVSGYHYGLLTCESCKGFFKRTVQN
 NKRYTCIENQNCQIDKTQRKRCPYCRFQKCLSVGMMKLEAVRADMRGGRNKGPMYKRDALKQQKKALI
 RANGLKLEAMSQVIQAMPSDLTISSAIQNIHSASKGLPLNHAALPPTDYDRSPFVTSPI SMTMPPHGSLQ
 GYQTHGHFSPRAIKSEYPDPYTSSPESIMGYSYMSYQTS SPASIPHLILELLKCEPDEPQVQAKIMAYL
 QQEQANRSKHEKLSFGLMCKMADQTLFSIVWARSSIFFRELKVDDQMKLLQNCWSELLILDHIYRQVV
 HGKEGSIFLVTGQQVDYSIIASQAGATLNNLMSHAQELVAKLRSLQFDQREFVCLKFLVLFSLDVKNLN
 FQLVEGVQEQVNAALLDYTCNYPQQTEKFGQLLLRLPEIRAISMQAEEYLYYKHLNGDVPYNNLLIEML
 HAKRA

TRTRPLEQKLISEEDLAANDILDYKDDDDKV

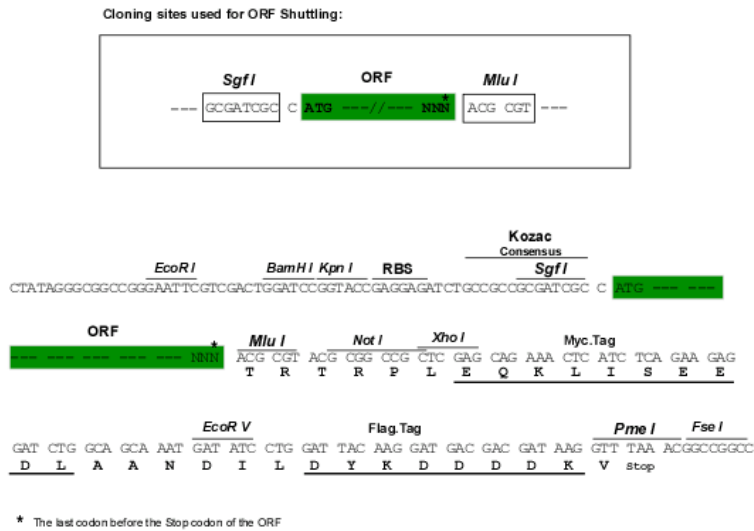
Chromatograms:

https://cdn.origene.com/chromatograms/mk6096_d08.zip

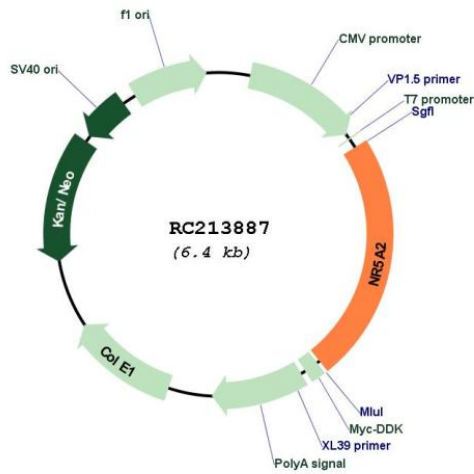
Restriction Sites:

SgfI-MluI

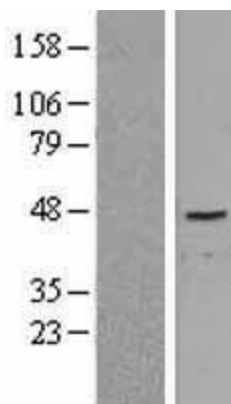
Cloning Scheme:



Plasmid Map:



ACCN:	NM_003822
ORF Size:	1485 bp
OTI Disclaimer:	The molecular sequence of this clone aligns with the gene accession number as a point of reference only. However, individual transcript sequences of the same gene can differ through naturally occurring variations (e.g. polymorphisms), each with its own valid existence. This clone is substantially in agreement with the reference, but a complete review of all prevailing variants is recommended prior to use. More info
OTI Annotation:	This clone was engineered to express the complete ORF with an expression tag. Expression varies depending on the nature of the gene.
Components:	The ORF clone is ion-exchange column purified and shipped in a 2D barcoded Matrix tube containing 10ug of transfection-ready, dried plasmid DNA (reconstitute with 100 ul of water).
Reconstitution Method:	<ol style="list-style-type: none">1. Centrifuge at 5,000xg for 5min.2. Carefully open the tube and add 100ul of sterile water to dissolve the DNA.3. Close the tube and incubate for 10 minutes at room temperature.4. Briefly vortex the tube and then do a quick spin (less than 5000xg) to concentrate the liquid at the bottom.5. Store the suspended plasmid at -20°C. The DNA is stable for at least one year from date of shipping when stored at -20°C.
RefSeq:	NM_003822.5
RefSeq Size:	4916 bp
RefSeq ORF:	1488 bp
Locus ID:	2494
UniProt ID:	O00482
Cytogenetics:	1q32.1
Domains:	HOLI, zf-C4
Protein Families:	Druggable Genome, Nuclear Hormone Receptor, Transcription Factors
Protein Pathways:	Maturity onset diabetes of the young
MW:	56.3 kDa
Gene Summary:	The protein encoded by this gene is a DNA-binding zinc finger transcription factor and is a member of the fushi tarazu factor-1 subfamily of orphan nuclear receptors. The encoded protein is involved in the expression of genes for hepatitis B virus and cholesterol biosynthesis, and may be an important regulator of embryonic development. [provided by RefSeq, Jun 2016]

Product images:

Western blot validation of overexpression lysate (Cat# [LY401255]) using anti-DDK antibody (Cat# [TA50011-100]). Left: Cell lysates from untransfected HEK293T cells; Right: Cell lysates from HEK293T cells transfected with RC213887 using transfection reagent MegaTran 2.0 (Cat# [TT210002]).