

Product datasheet for RC213883

LILRA5 (NM_181985) Human Tagged ORF Clone

Product data:

Product Type:	Expression Plasmids
Product Name:	LILRA5 (NM_181985) Human Tagged ORF Clone
Tag:	Myc-DDK
Symbol:	LILRA5
Synonyms:	CD85; CD85F; ILT-11; ILT11; LILRB7; LIR-9; LIR9
Mammalian Cell Selection:	Neomycin
Vector:	pCMV6-Entry (PS100001)
E. coli Selection:	Kanamycin (25 ug/mL)
ORF Nucleotide Sequence:	>RC213883 representing NM_181985 Red=Cloning site Blue=ORF Green=Tags(s)

TTTTGTAATACGACTCACTATAGGGCGCCGGGAATTCGTCGACTGGATCCGGTACCGAGGAGATCTGCC
GCC**CGGATCGCC**

ATGGCACCATGGTCTCATCCATCTGCACAGCTGCAGCCAGTGGGAGGAGACGCCGTGAGCCCTGCCCTCA
TGGTTCTGCTCTGCCTCGGGAACCTCTCCAAAGCCACCCTCTGGGCTGAGCCAGGCTCTGTGATCAGCCG
GGGGAACCTCTGTGACCATCCGGTGTGAGGGACCCTGGAGGCCAGGAATACCGTCTGGTTAAAGAGGGA
AGCCCAGAACCCTGGGACACACAGAACCCTGGAGCCCAAGAACAAGGCCAGATTCTCCATCCCATCCA
TGACAGAGCACCATGCAGGGAGATACCGCTGTTACTACTACAGCCCTGCAGGCTGGTCAGAGCCCAGCGA
CCCCCTGGAGCTGGTGGTGACAGGATTCTACAACAAACCACCCTCTCAGCCCTGCCAGTCTGTGGTG
ACCTCAGGAGAGAACGTGACCCTCCAGTGTGGCTCACGGCTGAGATTCGACAGGTTCACTTCTGACTGAGG
AAGGAGACCACAAGCTCTCCTGGACCTTGGACTCACAGCTGACCCCCAGTGGGCAGTTCCAGGCCCTGTT
CCCTGTGGGCCCTGTGACCCCCAGCCACAGGTGGATGCTCAGATGCTATGGCTCTCGCAGGCATATCCTG
CAGGTATGGTCAGAACCCAGTGACCTCCTGGAGATTCGGTCTCAGGAGCAGCTGATAACCTCAGTCCGT
CACAAAACAAGTCTGACTCTGGGACTGCCTCACACCTTCAGGATTACGCAGTAGAGAATCTCATCCGCAT
GGGCATGGCCGGCTTGATCCTGGTGGTCTTGGGATTCTGATATTCAGGATTGGCACAGCCAGAGAAGC
CCCCAAGCTGCAGCTGGAAGG

ACGCGTACGCGGCCGCTCGAGCAGAAACTCATCTCAGAAGAGGATCTGGCAGCAAATGATATCCTGGATT
ACAAGGATGACGACGATAAGGTTTAA



[View online »](#)

Protein Sequence: >RC213883 representing NM_181985
Red=Cloning site Green=Tags(s)

MAPWSHPSAQLQPVGDAVSPALMVLLCLGNLSKATLWAEPGSVISRGNVSVTIRCQGTLEAQEYRLVKEG
 SPEPWDTQNPLEPKNKARFSIPSMTEHHAGRYRCYYYSAGWSEPSDPLELVVTGFYNKPTLSALPSPVV
 TSGENVTLQCGSRLRFRDFILTEEGDHKLSWTLDSQLTPSGQFQALFPVGPVTPSHRWMLRCYGSRRHIL
 QVWSEPSDLLEIPVSGAADNLSPSQNKSDSGTASHLQDYAVENLIRMGAGLILVVLGILIFQDWSQRS
 PQAAAGR

TRTRPLEQKLISEEDLAANDILDYKDDDDKV

Chromatograms: https://cdn.origene.com/chromatograms/mk8049_e08.zip

Restriction Sites: SgfI-MluI

Cloning Scheme:



ACCN: NM_181985

ORF Size: 861 bp

OTI Disclaimer: The molecular sequence of this clone aligns with the gene accession number as a point of reference only. However, individual transcript sequences of the same gene can differ through naturally occurring variations (e.g. polymorphisms), each with its own valid existence. This clone is substantially in agreement with the reference, but a complete review of all prevailing variants is recommended prior to use. [More info](#)

OTI Annotation: This clone was engineered to express the complete ORF with an expression tag. Expression varies depending on the nature of the gene.

Components: The ORF clone is ion-exchange column purified and shipped in a 2D barcoded Matrix tube containing 10ug of transfection-ready, dried plasmid DNA (reconstitute with 100 ul of water).

Reconstitution Method:

1. Centrifuge at 5,000xg for 5min.
2. Carefully open the tube and add 100ul of sterile water to dissolve the DNA.
3. Close the tube and incubate for 10 minutes at room temperature.
4. Briefly vortex the tube and then do a quick spin (less than 5000xg) to concentrate the liquid at the bottom.
5. Store the suspended plasmid at -20°C. The DNA is stable for at least one year from date of shipping when stored at -20°C.

RefSeq: [NM_181985.4](#)

RefSeq Size: 1104 bp

RefSeq ORF: 864 bp

Locus ID: 353514

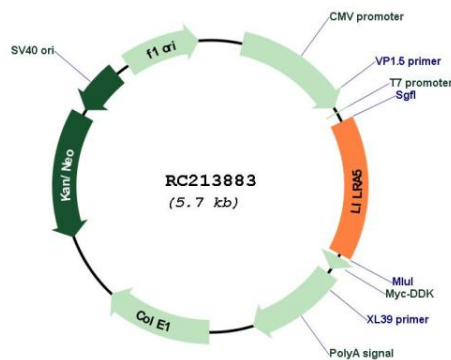
UniProt ID: [A6NI73](#)

Cytogenetics: 19q13.42

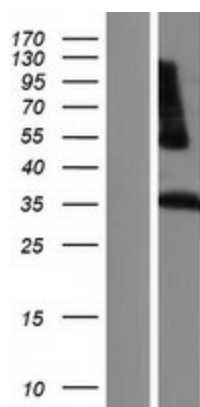
MW: 31.4 kDa

Gene Summary: The protein encoded by this gene is a member of the leukocyte immunoglobulin-like receptor (LIR) family. LIR family members are known to have activating and inhibitory functions in leukocytes. Crosslink of this receptor protein on the surface of monocytes has been shown to induce calcium flux and secretion of several proinflammatory cytokines, which suggests the roles of this protein in triggering innate immune responses. This gene is one of the leukocyte receptor genes that form a gene cluster on the chromosomal region 19q13.4. Four alternatively spliced transcript variants encoding distinct isoforms have been described. [provided by RefSeq, Jul 2008]

Product images:



Circular map for RC213883



Western blot validation of overexpression lysate (Cat# [LY405584]) using anti-DDK antibody (Cat# [TA50011-100]). Left: Cell lysates from untransfected HEK293T cells; Right: Cell lysates from HEK293T cells transfected with RC213883 using transfection reagent MegaTran 2.0 (Cat# [TT210002]).