

## Product datasheet for **RC213871**

### IL18BP (NM\_001039659) Human Tagged ORF Clone

#### Product data:

**Product Type:** Expression Plasmids  
**Product Name:** IL18BP (NM\_001039659) Human Tagged ORF Clone  
**Tag:** Myc-DDK  
**Symbol:** IL18BP  
**Synonyms:** FVH; IL18BPa  
**Mammalian Cell Selection:** Neomycin  
**Vector:** pCMV6-Entry (PS100001)  
**E. coli Selection:** Kanamycin (25 ug/mL)  
**ORF Nucleotide Sequence:** >RC213871 ORF sequence  
Red=Cloning site Blue=ORF Green=Tags(s)

TTTTGTAATACGACTCACTATAGGGCGCCGGGAATTCGTCGACTGGATCCGGTACCGAGGAGATCTGCC  
GCC**CGATCGCC**

ATGACCATGAGACACAACGGACACCAGACCTCAGCCCTTTGTGGGTCTGCTCCTGTGTGCCACGTGCG  
TCACTCTCCTGGTCAGAGCCACACCTGTCTCGCAGACCACCACAGCTGCCACTGCCTCAGTTAGAAGCAC  
AAAGGACCCCTGCCCTCCAGCCCCAGTGTTCCAGCAGCTAAGCAGTGTCCAGCATTGGAAGTGACC  
TGGCCAGAGGTGGAAGTGCCACTGAATGGAACGCTGAGCTTATCCTGTGTGGCCTGCAGCCGCTTCCCCA  
ACTTCAGCATCCTCTACTGGCTGGGCAATGGTTCCTTCATTGAGCACCTCCAGGCCGACTGTGGGAGGG  
GAGCACCAGCCGGAACGTGGGAGCACAGGTACGACGCTGTGCAAGGCCTTGGTGTGGAGCAGCTGACC  
CCTGCCCTGCACAGCACTTCTCCTGTGTGCTCGTGGACCCTGAACAGGTTGTCCAGCGTCACGTGCG  
TCTGGCCAGCTCTGGCTGGGCTGAGGGCAACCTTGCCCCCACCAGAAGCCCTGCCTCCAGCCA  
CAGCAGTCCACAGCAGCAGGGT

**ACGCGT**ACGCGGCCGCTCGAGCAGAACTCATCTCAGAAGAGGATCTGGCAGCAAATGATATCCTGGATT  
ACAAGGATGACGACGATAAGGTTTAA

**Protein Sequence:** >RC213871 protein sequence  
Red=Cloning site Green=Tags(s)

MTMRHNWTPDLSPLWVLLLCAHVVTLLVRATPVSQTTAATASVRSTKDPSPQPPVFAAKQCPALEVT  
WPEVEVPLNGTSLSCVACSRFPNFSILYWLNGSFIHLPGRLEWEGSTSRERGSTGTQLCKALVLEQLT  
PALHSTNFSCVLVDPEQVVQRHVLAQLWAGLRATLPPTQEALPSSHSSPQQQG

**TRTRPLEQKLI**SEEDLAANDILDYKDDDDKV



**Chromatograms:** [https://cdn.origene.com/chromatograms/mk6348\\_b11.zip](https://cdn.origene.com/chromatograms/mk6348_b11.zip)

**Restriction Sites:** SgfI-MluI

**Cloning Scheme:**



**ACCN:** NM\_001039659

**ORF Size:** 582 bp

**OTI Disclaimer:** The molecular sequence of this clone aligns with the gene accession number as a point of reference only. However, individual transcript sequences of the same gene can differ through naturally occurring variations (e.g. polymorphisms), each with its own valid existence. This clone is substantially in agreement with the reference, but a complete review of all prevailing variants is recommended prior to use. [More info](#)

**OTI Annotation:** This clone was engineered to express the complete ORF with an expression tag. Expression varies depending on the nature of the gene.

**Components:** The ORF clone is ion-exchange column purified and shipped in a 2D barcoded Matrix tube containing 10ug of transfection-ready, dried plasmid DNA (reconstitute with 100 ul of water).

**Reconstitution Method:**

1. Centrifuge at 5,000xg for 5min.
2. Carefully open the tube and add 100ul of sterile water to dissolve the DNA.
3. Close the tube and incubate for 10 minutes at room temperature.
4. Briefly vortex the tube and then do a quick spin (less than 5000xg) to concentrate the liquid at the bottom.
5. Store the suspended plasmid at -20°C. The DNA is stable for at least one year from date of shipping when stored at -20°C.

**RefSeq:** [NM\\_001039659.1](#), [NP\\_001034748.1](#)

**RefSeq Size:** 1545 bp

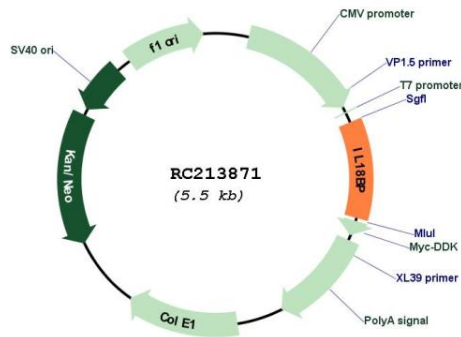
**RefSeq ORF:** 585 bp

**Locus ID:** 10068

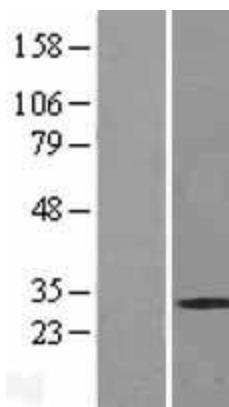
**UniProt ID:** [O95998](#)  
**Cytogenetics:** 11q13.4  
**Protein Families:** Druggable Genome, Secreted Protein  
**MW:** 21.1 kDa

**Gene Summary:** The protein encoded by this gene functions as an inhibitor of the proinflammatory cytokine, IL18. It binds IL18, prevents the binding of IL18 to its receptor, and thus inhibits IL18-induced IFN-gamma production, resulting in reduced T-helper type 1 immune responses. This protein is constitutively expressed and secreted in mononuclear cells. Elevated level of this protein is detected in the intestinal tissues of patients with Crohn's disease. Alternatively spliced transcript variants encoding different isoforms have been described for this gene. [provided by RefSeq, Feb 2011]

### Product images:



Circular map for RC213871



Western blot validation of overexpression lysate (Cat# [LY422102]) using anti-DDK antibody (Cat# [TA50011-100]). Left: Cell lysates from untransfected HEK293T cells; Right: Cell lysates from HEK293T cells transfected with RC213871 using transfection reagent MegaTran 2.0 (Cat# [TT210002]).