

Product datasheet for **RC213870**

SERPINA11 (NM_001080451) Human Tagged ORF Clone

Product data:

Product Type:	Expression Plasmids
Product Name:	SERPINA11 (NM_001080451) Human Tagged ORF Clone
Tag:	Myc-DDK
Symbol:	SERPINA11
Mammalian Cell Selection:	Neomycin
Vector:	pCMV6-Entry (PS100001)
E. coli Selection:	Kanamycin (25 ug/mL)
ORF Nucleotide Sequence:	>RC213870 representing NM_001080451 Red=Cloning site Blue=ORF Green=Tags(s)

TTTTGTAATACGACTCACTATAGGGCGGCCGGAATTCGTCGACTGGATCCGGTACCGAGGAGATCTGCC
GCC**CGATCGCC**

ATGGGTCCAGCTTGGCTTTGGCTACTGGGAACAGGGATCCTGGCCTCTGTCCACTGTAGCCCTTCTTG
CCCATGGAGATAAAAGTCTGCAGGGGCTCAACCCCCAGGCATCAGCTCTCAGAGCCAGCCCCGCCTA
CCACAGAATCACACCCACCAATTACCAATTTGCTTTGCGTTTGTATAAAGAGCTGGCAGCAGACGCCCC
GGAACATCTTCTCTCGCCAGTGAGCATCTCCACCACCCTGGCCTGCTCTCTTTGGGCCCCAAGCTA
ACACCTCAGCTCTGATCCTGGAGGCTGGGATTCAACCTCACAGAAACCCCTGAAGCCGACATCCACCA
GGGCTTCGGAGCCTCCTCCACACCCTTGCCCTGCCAGCCCCAACTCGAACTAAAAGTAGGAACTCC
CTGTTCTAGACAAGCGACTAAAGCCTCGGCAGCACTATTTGGACAGCATCAAGGAGCTTTATGGAGCTT
TTGCTTTTCTGCCAATTACAGATTCTGTTACAACCTGGGAGGCAGATTAATGACTATTTGAGAAGGCA
AACATACGGGCAAGTCGTGGACTGCCTCCCGAGTTCCAGCCAGGACACGTTATGGTTCTTGCCAATTAC
ATCTTCTTCAAAGCCAAGTGGAAGCACCTTTAGTCTGCTACCAGACCCAGAAGCAGGAAAGTTTCTTTG
TGGATGAGAGGACTTCTCTCCAGGTCCCATGATGCACCAAAAGGAAATGCACAGATTCTCTATGACCA
GGATTTGGCTTGACCGTCTCCAGATAGAATACAGAGGAAATGCCTTGGCGCTGCTGGTCTCCCTGAC
CCGGGGAAATGAAGCAGGTGGAGGCTGCTCTGCAGCCACAGACCCTGAGAAAATGGGGCAATTGTCTC
TGCCCACTGCTGTTGGATTGCACTTGCCAAGGTTTCAATTTCTGGAACATATAACCTGGAAGACATACT
TCCCCAATTGGTCTCACAACATACTCAACTAGAAGCTGACTTCTCAGGAGTCACTGGGCAGCTCAAC
AAAACCATCTCCAAGGTGTACACAAGGCGATGGTGGACATGAGTGAGAAGGGGACCGAGGCCGGGGCTG
CTTCAGGCCTCTCTCCAGCCCCATCTCTGAACACCATGTGACACCCACATGCCCACTTCAACAGGCC
TTTCTCTTGCTCCTTTGGGAGGTACACCCAGAGCTTACTCTTCTGGGAAAAGTTGTCAACCCAGTT
GCAGGG

ACGCGTACGCGGCCGCTCGAGCAGAACTCATCTCAGAAGAGGATCTGGCAGCAAATGATATCTGGATT
ACAAGGATGACGACGATAAGGTTTAA



[View online »](#)

Protein Sequence: >RC213870 representing NM_001080451
 Red=Cloning site Green=Tags(s)

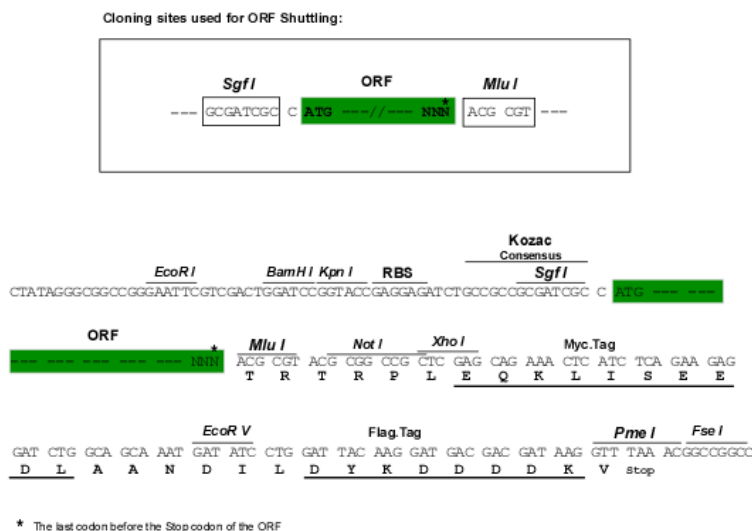
MGPAWLWLLGTGILASVHCQPLL AHGDKSLQGPQPPRHQLSEPA PAYHRITPTITNFALRLYKELAADAP
 GNIFFSPVSI STLALLSLGAQANTSALILEGLGFNL TETPEADIHQGFRSL LHTLALPSPKLELKVGN S
 LFLDKRLKPRQHYLDSIKELYGAFAFSANFTDSVTTGRQINDYLRRQTYGQVVDCLPEFSQDTFMVLANY
 IFFKAKWKHPFSRYQTQKQESFFVDERTSLQVPMMHQKEMHRFLYDQDLACTVLQIEYRGNALALLVLPD
 PGKMKQVEAALQPQTLRKWQQLLP SLLDLHLPRFSISGTYNLEDILPQIGLTNINLEADFSGVTGQLN
 KTISKVSHKAMVDMSEKGT EAGAASGLLSQPPSLNTMSDPHAHFNRPFLLLLWEVTTQSLFLGKV VNPV
 AG

TRTRPLEQKLISEEDLAANDILDYKDDDDKV

Chromatograms: https://cdn.origene.com/chromatograms/ja1310_h01.zip

Restriction Sites: SgfI-MluI

Cloning Scheme:



ACCN: NM_001080451

ORF Size: 1266 bp

OTI Disclaimer: The molecular sequence of this clone aligns with the gene accession number as a point of reference only. However, individual transcript sequences of the same gene can differ through naturally occurring variations (e.g. polymorphisms), each with its own valid existence. This clone is substantially in agreement with the reference, but a complete review of all prevailing variants is recommended prior to use. [More info](#)

OTI Annotation: This clone was engineered to express the complete ORF with an expression tag. Expression varies depending on the nature of the gene.

Components: The ORF clone is ion-exchange column purified and shipped in a 2D barcoded Matrix tube containing 10ug of transfection-ready, dried plasmid DNA (reconstitute with 100 ul of water).

Reconstitution Method:

1. Centrifuge at 5,000xg for 5min.
2. Carefully open the tube and add 100ul of sterile water to dissolve the DNA.
3. Close the tube and incubate for 10 minutes at room temperature.
4. Briefly vortex the tube and then do a quick spin (less than 5000xg) to concentrate the liquid at the bottom.
5. Store the suspended plasmid at -20°C. The DNA is stable for at least one year from date of shipping when stored at -20°C.

RefSeq: NM_001080451.2

RefSeq Size: 1471 bp

RefSeq ORF: 1269 bp

Locus ID: 256394

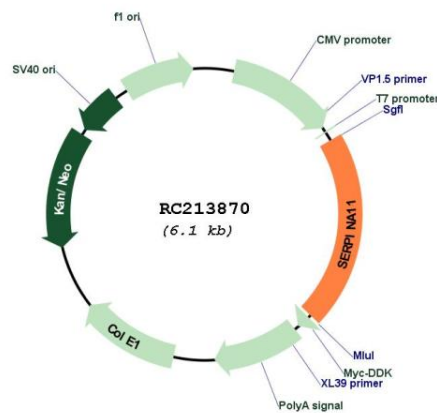
UniProt ID: Q86U17

Cytogenetics: 14q32.13

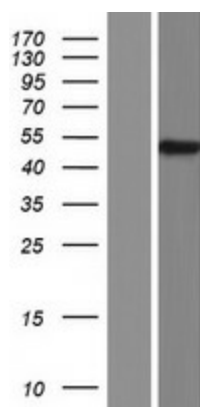
Protein Families: Druggable Genome, Secreted Protein

MW: 46.8 kDa

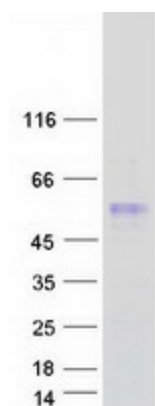
Product images:



Circular map for RC213870



Western blot validation of overexpression lysate (Cat# [LY420709]) using anti-DDK antibody (Cat# [TA50011-100]). Left: Cell lysates from untransfected HEK293T cells; Right: Cell lysates from HEK293T cells transfected with RC213870 using transfection reagent MegaTran 2.0 (Cat# [TT210002]).



Coomassie blue staining of purified SERPINA11 protein (Cat# [TP313870]). The protein was produced from HEK293T cells transfected with SERPINA11 cDNA clone (Cat# RC213870) using MegaTran 2.0 (Cat# [TT210002]).