

Product datasheet for RC213869

USP54 (NM_152586) Human Tagged ORF Clone

Product data:

Product Type:	Expression Plasmids
Product Name:	USP54 (NM_152586) Human Tagged ORF Clone
Tag:	Myc-DDK
Symbol:	USP54
Synonyms:	bA137L10.3; bA137L10.4; C10orf29
Mammalian Cell Selection:	Neomycin
Vector:	pCMV6-Entry (PS100001)
E. coli Selection:	Kanamycin (25 ug/mL)
ORF Nucleotide Sequence:	>RC213869 representing NM_152586 Red=Cloning site Blue=ORF Green=Tags(s)

TTTTGTAATACGACTCACTATAGGGCGCCGGGAATTCGTCGACTGGATCCGGTACCGAGGAGATCTGCC
GCC**CGATCGCC**

ATGCTTGGGAAGAGAAATTATTTTTTCAGGGGTCGTGGTAGTGTACAAGGGATGTTGCACCTCGAAGCT
CAACCTCCATAGCCCCAGCAAAGGCCTCAGCAATGAGCCAGGGCAAACAGCTGCTTCCCTCAACAGTGC
CCTGCAGGTTTTGTGGCACTTGGATATCTCCGACGTAGCTTTAGGCAGCTTACAACCTACAAGTGCATG
GGAGATTCCTGCATCTTTGCGCTCTCAAGGGAATCTTTAACCAGTTTCAGTGTAGTAGTAAAAAGTGC
TTCCATCTGACACTCTCCGAGTCTCTGGCAAAGACTTCCAGGATGAACAACGTTTCCAGCTGGGAAT
TATGGATGATGCTGCAGAGTCTTTGAAAACCTCCTGATGAGAATTCACCTCCACATTGGCTGATGAAAC
AAAGAGGATATATGACTGCCAACACTGCATTTCCCATCAGAAATTTGCAATGACATTGTTTGAGCAGT
GTGTATGACTAGCTGTGGTGCCACTTCTGATCCGCTGCCTTTCATCCAGATGGTACATTATCTCCAC
CACTTCCCTTTGCAATCAGGCTATTTGTATGCTGGAAAGACGAGAGAAACCTTCCCAAGCATGTTTGGT
GAGCTGCTGCAGAATGCCAGCACCATGGGGATCTGCGGAAGTGTCCAAGCAACTGTGGAGAGAGGATCA
GGATTCGCGGTGTGTGATGAATGCTCCACAGATTATCACGATTGGGCTGGTATGGGACTCAGACCACTC
AGACTTAGCAGAAGATGTTATCCACAGCCTGGGAACCTGCCTTAAGCTGGGTGATCTGTTTTTCAGAGTG
ACGGATACCCGGCCAAGCAACTGAACCTGACTTACTTGAATGATCTGTTACTATGGCAAACATTATT
CTACATCTTTTTTCAAACAAGATTTCGCAAAATGGATGTATTTTGATGATGCTCATGTCAAGGAGATTGG
GCCCAAATGGAAGGATGTGGTGACCAAATGCATCAAGGGCATTATCAGCCCCTGCTGCTCTTTATGCA
GATCCCCAGGGTACCCAGTTTCCACCCAGGACCTGCCTCCCAAGCTGAGTTCCAGTCATACAGCAGGA
CATGCTACGACAGTGAAGATTCAGGGAGGGAGCCCTCCATCTCAAGTGACACTCGAACAGATTCTCAAC
GGAGAGCTATCCCTACAAACATTCACCATGAGTCTGTGGTCAGTCACTTCTCTTCTGATTCTCAGGGG
ACAGTCATCTATAATGTGAAAAATGATTCCATGTCTCAGAGCAGTCGGGACACAGGACACCTGACTGATA
GTGAATGTAATCAGAAACACACATCCAAGAAAGGGTCACTGATAGAGCGCAAGAGGAGCTCTGGTCGGGT
TAGGAGGAAAGGCGATGAGCCCCAGGCCTCGGGATACCACAGTGAAGGAGAAACACTGAAAGAGAAGCAG



GCTCCTAGAAATGCCTCCAAACCATCCAGCAGCACCAACAGGCTGAGAGATTTTAAAGAGACAGTCAGCA
 ATATGATCCATAACAGACCATCCCTGGCTTCTCAGACCAATGTAGGCTCTCACTGCAGGGGCAGAGGAGG
 AGACCAGCCTGACAAAAACCTCCTAGGACCCTGCCTTTACACTCTCGTGACTGGGAAATAGAGAGTACC
 AGCAGTGAGTCAAAATCCAGTCTTCCAGCAAGTATCGTCCCACATGGAGACCAACGAGAATCTCTGA
 ATATTGACAGTATCTTTAGTAAGGACAAAAGGAAGCACTGTGGCTATACCCAGCTTAGCCCTTTTCTGA
 GGATTGAGCTAAAGAATTTATACCAGATGAACCAAGCAAGCCACCTTCTACGACATTAATTTGGTGGA
 CCAAGCCCCCAGTACAAGCGCTGGGGCCAGCACGGCCAGGCTCTCACCTTTTAGAGCAGCACCCCCGAC
 TAATCCAGCGAATGGAATCTGGCTATGAAAGCAGTGAGAGGAACAGCAGCAGCCCTGTGACCTGGATGC
 AGCCCTGCCTGAGAGCTCAAATGTCTACAGGGATCCAAGTGCTAAGAGATCAGCTGGGTTGGTTCCTTCC
 TGGCGTCATATCCCAAAGTCGCACAGCAGTAGCATCCTGGAGGTAGACTCCACAGCATCCATGGGTGGCT
 GGACAAAGAGTCAGCCTTTCTCTGGTGAGGAGATATCTTCTAAAAGTGAAGTGGATGAATTCAGGAAGA
 GGTGGCCAGGAGGGCGCAGGAACAGGAACCTCGAAGAAAACGGGAGAAGGAGTTAGAGGCAGCGAAAGGG
 TTTAACCTCATCTAGCCGCTTATGGACTTGGATGAAGTGCAGAAATCAGGGGAGGAGTGACGGCTTTG
 AGAGTCCCTGCAAGAGGCAGAGTCAGTGTGGAAGTCACTACATCTGGAACAGAAAGGAGACTGTGC
 TGCAGCTTTGGCTCTCTGTAATGAAGCTATCTCTAAACTAAGACTTGCCCTGCATGGTGCCAGCTGTAGC
 ACGCACAGCAGAGCCCTAGTCGATAAGAAGTTGCAAAATCAGTATTCGAAAAGCACGGAGCCTGCAGGATC
 GCATGCAGCAGCAGCAATCACCACAGCAGCCGTGCGAGCCCTCAGCCTGCCTCCCAACACAGGCGGGGAC
 TCTCTCTCAGCCAACAAGTGAACAGCCTATCCCCTCCAAGTATTGTTAAGCCAAGAGGCCAACTGGAA
 TCCGGCATGGATACAGAGTTTGGGGCCAGTCTTTCTTCCATTACCTGCCTTCTGCCATGAGTCACACT
 CATCACTATCTCCAGAGTCATCTGCCCCACAGCACAGCTCCCCAGTAGACTGCTTGAAGCTTCTGAC
 TTCGGTTGAAGTAGACAACATTTGAACCTCTGCATTCCACAGGCAAGGTTACCTAAAGCACCAGGGTGG
 ACTGAGAAGAATCTCATCATAGTTGGGAGCCATTGGATGCCCCAGAGGGTAAGCTGCAAGGCTCTAGTT
 GTGACAAACAGCAGTTGCAGCAAGCTCCCTCCACAAGAAGGAAGAGGCATTGCTCAAGAACAGCTGTTCCA
 AGAAAAGAAGGATCCTGCTAACCCCTCCCCTGATGCCTGGAATAGCCACCTCTGAGAGGGGTGATGAA
 CACAGCCTAGGCTGTAGTCCTTCAAATTCATCAGCTCAGCCAGCCTTCCCTGTATAGAACCTGCCACC
 CCATAATGCCTGTTGCTTCTTATTGTGCTTCACTGTCTGATCCTGTGCAGAAAATAACCAATGCCT
 CCAAGGCCAAAGCCTCAAACCTTATTGACTTTAAAAGTGGACAGAGGCAGTGAGGAGACCTATAGGCCA
 GAGTTTCCAGCACAAAGGGGCTTGTCCGTTCTCTGGCTGAGCAGTTCAGAGGATGCAGGGTGTCTCCA
 TGAGGGATAGTACAGGTTTCAAGGATAGAAGTTTGTGAGTGTCTAAGGAAGAACTTCTCCCTTCTGA
 TTCTAAGCCTCCTTCTCACAGGTCAGAGAAAGGCCACTGGCCATGGGCAAAGCAACAATCCTCTCTG
 GAGGGTGGGGATAGACCCTTCTGGGAAGAGTCCACTGAACATTCTTCTTTCCTTAAACTCTGGGC
 TGCCATAATGGTGAACTTCTAGCCGAGGACAGCCAGGTTGGCAGAGCCAGACATATACCAAGAGAAAGCT
 GTCCCAAGTGAGAGATGTTAGGTCTAAGGATCTGGGCAGCAGTACTGACTTGGGGACTTCCCTTGCCTTTG
 GATTCTGGGTGAATATCACAAGGTTCTGTGATTCTCAGCTTAAGCATGGGGCACCTAGGCCAGGAATGA
 AGTCTCCCTCATGATTTCCATACGTGTGTAACCTATCCAGAGAGAAAATCACATCCTTTTGATCCACA
 TTGGAACCAAGACACAGAGCAGGAGACCTCAGAATTGGAGTCTCTGTATCAGGCCAGTCTCAGGCTTCT
 CAAGCTGGCTGTTCTGGATGGGGCAGCAGGATACCGCTGGCACCCACTTAGCCAAACAGGCTCTGCAG
 ATGGCATGGGGAGGAGGTTGACTCAGCCATGATCCTGGTCTCTCAAAGACTTCAACAGCAGAAATGGA
 GCATGGTCTCCATGAAGCCAGAACAGTGGTACTTCTCAGGCTACACCTTGCCGAGGCCTCAGCAGGGAG
 TGTGGGGAGGATGAGCAGTACAGTGACAGAAATTTACGTGCGATCTCACGCACTCAGTGGCACCGTTG
 TCTCAGAGAGGGAGGAAGCTCCGTTTTCTCCACAGTTTTGATTATCAAACGTGAGGAAGCCTTTGGA
 AACCGGGCACCGTTGTTCCAGCTCCTTCCCTCCCTGTCATCCATGACCTTCTGTGTTTCTCCTCGGT
 CCCCACCTTACCTTCCCCAACACAGTTCCTGTCCCAGATGCTCTGATGCCACCATGGCAGGGGAGC
 CCAATAGACTCCCAGGAACCTTCAAGGAGTGTCCAGCAGTTTCTGGCTATGTGTGACAGGGGTGAACTTC
 CCAAGGGGCCAAGTACACAGGAAGGACTTTGAACTACCAGAGCCTCCCCATCGCTCCAGAACAGACAAC
 TCCTGGGCACCTGGTCCAGAGCAACACAGCATATTGGGACCAGATTCTGACTACTCCAGGGTGAATC
 CTCAACTAACCTACACTGCCACACTACCAGAAAGAAGCAAGGGCCTTCAAGTTCTCACACTCAGTCTG
 GAGTGATCTTTTCCATTACCCTCCCACCTCCCATTGTTTCATCCTGTGTACCCACCATCTAGCAGTCTT
 CATGTACCCTGAGGTCAGCTTGAATTCAGATCCTGTTCCAGGGTCCCGAACCCCTGGTCTCGAAGAG
 TAGATATGCCCCAGATGATGACTGGAGGCAAAGCAGTTATGCCTCCCCTCTGGACACAGGAGAACAGT
 GGGAGAGGGGTTCTGTTTGTCTATCAGATGCTCCAGAAGAGAGCAGATCAGGGCTAGAGTCTCGAC
 CACAGTCAATGG

ACGCGTACGCGGCCGCTCGAGCAGAACTCATCTCAGAAGAGGATCTGGCAGCAATGATATCCTGGATT
ACAAGGATGACGACGATAAGGTTTAA

Protein Sequence:

>RC213869 representing NM_152586
Red=Cloning site Green=Tags(s)

MSWKRNYSFSGGRGSVQGMFAPRSSTSIAPSKGLSNEPGQNSCFLNSALQVLWHLDFRRSFRQLTTHKCM
GDSCIFCALKGIFNQFQCSSEKVLPSDTLRSALAKTFQDEQRFQLGIMDDAAECFENLLMRIHFHIADET
KEDICTAQHCISHQKFAMTLFEQCVCCTSCGATSDPLPFIQMVHYISTTSLCNQAIICMLERREKPSPSMFG
ELLQNASTMGDLRNCPSNCGERIRIRVLMNAPQIITIGLVWSDHSDLAEDVIHSLGTCLKLGDLFFRV
TDDRAKQSELYLVGMICYGKHYSTFFFQTKIRKWMYFDDAHVKEIGPKWKDVVTKCIKGHYQPLLLLYA
DPQGTVPVSTQDLPPQAEFQSYSRTCYSSEDSGREPSSISSDTRTDSSTESYPYKSHHESVSHFSQSDSQG
TVIYNVENDSMSQSSRDTHLTDSECNQKHTSKKGLSIERKRSSGRVRRKGDEPQASGYHSEGETLKEKQ
APRNASKPSSSTNRLRDFKETVSNMIHNRPSLASQTNVGSCHCRGGDQPKKPPRTLPLHSRDWEIEST
SSEKSSSSSKYRPTWRPKRESLNIDSIKSKDRKHCYQQLSPFSEDSAKEFIPDEPSKPPSYDIKFGG
PSPQYKRWGPARGSHLLEQHPRLIQRMESGYESSERNSSSPVSLDAALPESSNVYRDPASAKRSAGLVPS
WRHIPKSHSSSILEVDSTASMGGWTKSQPFSGEEISSKSELDELQEEVARRAQEQLRRKREKELEAAKG
FNPHPSRFMDLDELQNGRSDGFERSLQEAESVFEEHLHLEQKGDCAAALALCNEAISKLRLALHGASCS
THSRALVDKQLISIRKARSLQDRMQQQSPQPSQPSACLPTQAGTLSQPTSEQPIPLQVLLSQEAQLE
SGMDTEFGASSFFHSPASCHESSLSPESSAPQHSSPSRSALKLLTSVEVDNIEPSAFHRQGLPKAPGW
TEKNSHHSWEPLDAPEGKLGSRCDNSSCSKLPPEGRGIAQEQLFQEKKDPANPSPVMPGIATSERGDE
HSLGCSPSNSSAQPSLPLYRTCHPIMPVASSFVLHCPDPVQKTNQCLQGQSLKTSLLTKVDRGSEETYRP
EFPSTKGLVRSLEQFQRMQGVSMRDSTGFKDRSLSGSLRKNSSPSDSKPPFSQSQEKGHWPWAKQSSSL
EGGDRPLSWEESTEHSSLALNSGLPNGETSSGGQPRLAEPDIYQEKLQVVRDVRSKDLGSSDLDLGTSLPL
DSWVNITRFCDSQLKHGAPRPGMKSSPHDSHTCVTYPERNHILLHPHWNQDTEQETSELESLYQASLQAS
QAGCSGWGQQDTAWHPLSQTGSADGMGRRLHSAHDPGLSKTSTAEMEHLHEARTVRTSQATPCRGLSRE
CGEDEQYSAENLRRISRSLSGTVVSEREEAPVSSHSDSSNVRKPLETGHRCSSSSSLPVIHDPVSVLLG
PQLYLPQPQFLSPDVLMPMAGEPNRLPGTSRSVQQFLAMCDRGETSQGAKYTGRTLNYQSLPHRSRTDN
SWAPWSETNQHIGTRFLTTPGCNPQLTYATLPERSKGLQVPHQSWSDLFHSPSHPIVHPVYPPSSSL
HVPLRSAWNSDPVPGSRTPGPRRVDMPPDDDDWRQSSYASHSGHRRTVGEGFLFVLSAPRREQIRARVLQ
HSQW

TRTRPLEQKLISEEDLAANDILDYKDDDDKV

Restriction Sites:

Sgfl-MluI

Cloning Scheme:


ACCN: NM_152586

ORF Size: 5052 bp

OTI Disclaimer: The molecular sequence of this clone aligns with the gene accession number as a point of reference only. However, individual transcript sequences of the same gene can differ through naturally occurring variations (e.g. polymorphisms), each with its own valid existence. This clone is substantially in agreement with the reference, but a complete review of all prevailing variants is recommended prior to use. [More info](#)

OTI Annotation: This clone was engineered to express the complete ORF with an expression tag. Expression varies depending on the nature of the gene.

Components: The ORF clone is ion-exchange column purified and shipped in a 2D barcoded Matrix tube containing 10ug of transfection-ready, dried plasmid DNA (reconstitute with 100 ul of water).

- Reconstitution Method:**
1. Centrifuge at 5,000xg for 5min.
 2. Carefully open the tube and add 100ul of sterile water to dissolve the DNA.
 3. Close the tube and incubate for 10 minutes at room temperature.
 4. Briefly vortex the tube and then do a quick spin (less than 5000xg) to concentrate the liquid at the bottom.
 5. Store the suspended plasmid at -20°C. The DNA is stable for at least one year from date of shipping when stored at -20°C.

RefSeq: [NM_152586.4](#)

RefSeq Size: 6202 bp

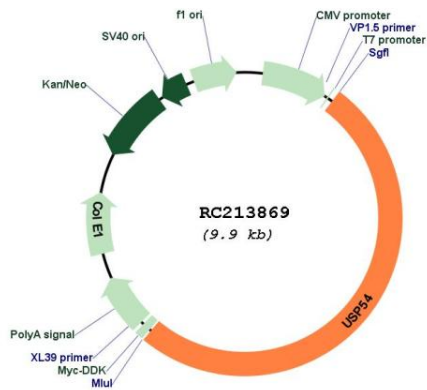
RefSeq ORF: 5055 bp

Locus ID: 159195

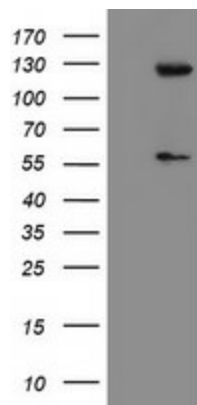
UniProt ID: [Q70EL1](#)

Cytogenetics: 10q22.2

Protein Families: Protease
MW: 187.2 kDa
Gene Summary: Has no peptidase activity.[UniProtKB/Swiss-Prot Function]

Product images:


Circular map for RC213869



HEK293T cells were transfected with the pCMV6-ENTRY control (Cat# [PS100001], Left lane) or pCMV6-ENTRY USP54 (Cat# RC213869, Right lane) cDNA for 48 hrs and lysed. Equivalent amounts of cell lysates (5 ug per lane) were separated by SDS-PAGE and immunoblotted with anti-USP54(Cat# [TA800284]).