

Product datasheet for **RC213862**

FOXP1 (NM_032682) Human Tagged ORF Clone

Product data:

Product Type:	Expression Plasmids
Product Name:	FOXP1 (NM_032682) Human Tagged ORF Clone
Tag:	Myc-DDK
Symbol:	FOXP1
Synonyms:	12CC4; hFKH1B; HSPC215; MFH; QRF1
Mammalian Cell Selection:	Neomycin
Vector:	pCMV6-Entry (PS100001)
E. coli Selection:	Kanamycin (25 ug/mL)



[View online »](#)

ORF Nucleotide
Sequence:

>RC213862 representing NM_032682
Red=Cloning site Blue=ORF Green=Tags(s)

TTTTGTAATACGACTCACTATAGGGCGGCCGGAATTCGTCGACTGGATCCGGTACCGAGGAGATCTGCC
GCC**CGCATCGCC**

ATGATGCAAGAATCTGGGACTGAGACAAAAAGTAAACGGTTCAGCCATCCAGAATGGGTGGGCGGCAGCA
ACCACTTACTAGAGTGCGGCGGTCTTCGGGAGGGGCGGTCCAACGAGAGACGCCGGCCGTGGACATCGG
GGCAGCTGACCTCGCCCACGCCACGAGCAGCAGCAACAGGCACTTCAGGTGGCAAGACAGCTCCTTCTT
CAGCAGCAACAGCAGCAGCAAGTTAGTGGATTAATAATCTCCCAAGAGGAATGACAAAACAACAGCTCTTC
AGGTTCCCGTGTGAGTGGCTATGATGACACCTCAAGTTATCACTCCCAGCAAATGCAGCAGATCTCCA
GCAACAAGTGCTGAGCCCTCAGCAGCTCCAGGTTCTCTCCAGCAGCAGCAGGCCCTCATGCTTCAACAG
CAGCAGCTTCAAGAGTTTATAAAAAACAACAGGAACAGTTGCAGCTTCAACTTTTACAACAACAACATG
CTGAAAAACAGCCTAAAGAGCAACAGCAGGTGGCTACCCAGCAGTTGGCTTTTCAGCAGCAGCTTTTACA
GATGCAGCAGTTACAGCAGCAGCACCTCTGTCTTTCAGCGCCAAGGCCTTCTGACAATTCAGCCCGGG
CAGCCTGCCCTTCCCCTTCAACCTTGTCTCAAGGCATGATTCCAACAGAACTGCAGCAGCTCTGAAAA
AAGTGACAAGTGCTCATACTGCAGAAGAAACCACAGGCAACAATCACAGCAGTTTGGATCTGACCACGAC
ATGTGTCTCCTCTCTGCACCTTCCAAGACCTCCTTAATAATGAACCCACATGCCTTACCAATGGACAG
CTCTCAGTCCACACTCCAAAAGGGAAAGTTTGTCCCATGAGGAGCACCCCATAGCCATCCTCTCTATG
GACATGGTGTATGCAAGTGGCCAGGCTGTGAAGCAGTGTGCGAAGATTTCCAATCATTTCTAAAACATCT
CAACAGTGAGCATGCGCTGGACGATAGAAGTACAGCCCAATGTAGAGTACAAATGCAGGTTGTACAGCAG
TTAGAGCTACAGCTTGCAAAAGACAAAGAACGCCTGCAAGCCATGATGACCCACCTGCATGTGAAGTCTA
CAGAACCCAAAGCCGCCCTCAGCCCTTGAATCTGGTATCAAGTGTCACTCTCTCAAGTCCGCATCGGA
GGCTTCTCCACAGAGCTTACCTCATACTCCAACGACCCCAACCGCCCCCTGACTCCCGTCACCCAAGGC
CCCTCTGTCAACAACCACAGCATGCACAGGTGGGACCCATCCGCAGGCGGTACTCAGACAAATACA
ACGTGCCCATTTTCGTCAGCAGATATTGCGCAGAACCAAGAATTTTATAAGAACGCAGAAGTTAGACCACC
ATTTACATATGCATCTTTAATTAGGCAGGCCATTCTCGAATCTCCAGAAAAGCAGCTAACACTAAATGAG
ATCTATAACTGGTTCACACGAATGTTTGTCTTACTTCCGACGCAACGCGGCCACGTGGAAGAATGCAGTGC
GTCATAATCTTAGTCTTCAAGTGTGTTTGTGCGAGTAGAAAACGTTAAAGGGGCAGTATGGACAGTGG
TGAAGTAGAATTCAAAAACGAAGGCCACAAAAGATCAGTGGTAACCCTTCCCTTATTA AAAACATGCAG
AGCAGCCACGCCTACTGCACACCTCTCAGTGCAGCTTTACAGGCTTCAATGGCTGAGAATAGTATACCTC
TATACACTACCGTTCCATGGGAAATCCCCTCTGGGCAACTTAGCCAGCGCAATACGGGAAGAGCTGAA
CGGGGCAATGGAGCATACCAACAGCAACGAGAGTGACAGCAGTCCAGGCAGATCTCCTATGCAAGCCGTG
CATCCTGTACACGTCAAAGAAGAGCCCCTCGATCCAGAGGAAGCTGAAGGGCCCCCTGTCTTAGTGACAA
CAGCCAACCACAGTCCAGATTTTGACCATGACAGAGATTACGAAGATGAACCAAGTAAACGAGGACATGGA
G

ACGCGTACGCGGCCGCTCGAGCAGAACTCATCTCAGAAGAGGATCTGGCAGCAAATGATATCCTGGATT
ACAAGGATGACGACGATAAGGTTTAA

Protein Sequence: >RC213862 representing NM_032682
Red=Cloning site Green=Tags(s)

```
MMQESGTETKSNQSAIQNGSGGSNHLLECGGLREGRSNGETPAVDIGAADLAHAQQQQQQALQVARQLLL
QQQQQQQVSLKSPKRNDKQPALQVPVSVAMMTPQVITPQQMQQILQQQVLSPQQQLQVLLQQQQALMLQQ
QQLQEFYKKQQEQLQLQLLQQQHAGKQPKQQQVATQQLAFQQQLLQMQQLQQQHLLSLQRQGLLTIQPG
QPALPLQPLAQGMIPTELQQLWKEVTSAHAEETTGNHSSLDLTTTCVSSAPSSTSLIMPHASTNGQ
LSVHTPKRESLSHEEHPHSHPLYGHGVCKWPGCEAVCEDFQSFLKHLNSEHALDDRSTAQCRVQMQRVQQ
LELQLAKDKERLQAMMTHLHVKSTEPKAAQPPLNLYSSVTLSSKASEASPSQLPHTPTTPTAPLTPVTQG
PSVITTTSMHTVGPIRRYSKYNVPISSADIAQNQEFYKNAEVRPFTYASLIRQAILESPEKQLTLNE
IYNWFTRMFAYFRRNAATWKNVVRHNLHLKCFVRVENVKAVVTVDEVEFQKRRPQKISGNPSLIKNNMQ
SSHAYCTPLSAALQASMAENSIPLYTTASMGNPGLGNLASAIREELNGAMEHTNSNESDSSPGRSPMQAV
HPVHVHKEEPLDPEEAEGPLSLVTTANHSPDFDHRDRYEDPEVNEDEME
```

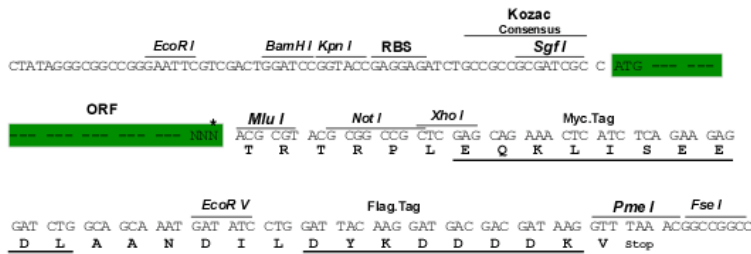
TRTRPLEQKLISEEDLAANDILDYKDDDDKV

Chromatograms: https://cdn.origene.com/chromatograms/mk6205_c05.zip

Restriction Sites: SgfI-MluI

Cloning Scheme:

Cloning sites used for ORF Shuttling:



* The last codon before the Stop codon of the ORF

ACCN: NM_032682

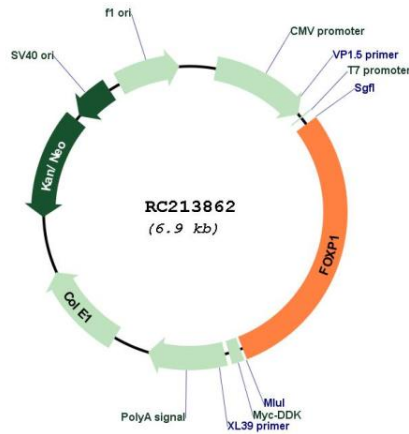
ORF Size: 2031 bp

OTI Disclaimer: The molecular sequence of this clone aligns with the gene accession number as a point of reference only. However, individual transcript sequences of the same gene can differ through naturally occurring variations (e.g. polymorphisms), each with its own valid existence. This clone is substantially in agreement with the reference, but a complete review of all prevailing variants is recommended prior to use. [More info](#)

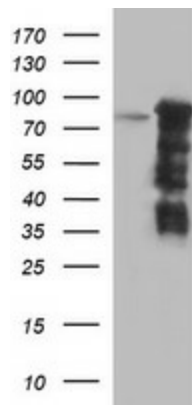
OTI Annotation: This clone was engineered to express the complete ORF with an expression tag. Expression varies depending on the nature of the gene.

Components:	The ORF clone is ion-exchange column purified and shipped in a 2D barcoded Matrix tube containing 10ug of transfection-ready, dried plasmid DNA (reconstitute with 100 ul of water).
Reconstitution Method:	<ol style="list-style-type: none">1. Centrifuge at 5,000xg for 5min.2. Carefully open the tube and add 100ul of sterile water to dissolve the DNA.3. Close the tube and incubate for 10 minutes at room temperature.4. Briefly vortex the tube and then do a quick spin (less than 5000xg) to concentrate the liquid at the bottom.5. Store the suspended plasmid at -20°C. The DNA is stable for at least one year from date of shipping when stored at -20°C.
RefSeq:	NM_032682.6
RefSeq Size:	6222 bp
RefSeq ORF:	2034 bp
Locus ID:	27086
UniProt ID:	Q9H334
Cytogenetics:	3p13
Domains:	FH
Protein Families:	Transcription Factors
MW:	75.1 kDa
Gene Summary:	This gene belongs to subfamily P of the forkhead box (FOX) transcription factor family. Forkhead box transcription factors play important roles in the regulation of tissue- and cell type-specific gene transcription during both development and adulthood. Forkhead box P1 protein contains both DNA-binding- and protein-protein binding-domains. This gene may act as a tumor suppressor as it is lost in several tumor types and maps to a chromosomal region (3p14.1) reported to contain a tumor suppressor gene(s). Alternative splicing results in multiple transcript variants encoding different isoforms. [provided by RefSeq, Jul 2008]

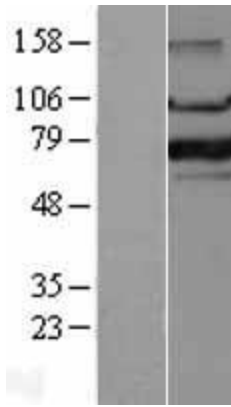
Product images:



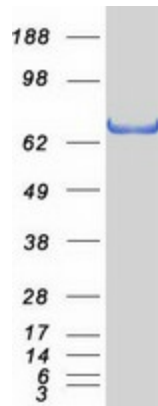
Circular map for RC213862



HEK293T cells were transfected with the pCMV6-ENTRY control (Cat# [PS100001], Left lane) or pCMV6-ENTRY FOXP1 (Cat# RC213862, Right lane) cDNA for 48 hrs and lysed. Equivalent amounts of cell lysates (5 ug per lane) were separated by SDS-PAGE and immunoblotted with anti-FOXP1 (Cat# [TA506702]). Positive lysates [LY403191] (100ug) and [LC403191] (20ug) can be purchased separately from OriGene.



Western blot validation of overexpression lysate (Cat# [LY403191]) using anti-DDK antibody (Cat# [TA50011-100]). Left: Cell lysates from untransfected HEK293T cells; Right: Cell lysates from HEK293T cells transfected with RC213862 using transfection reagent MegaTran 2.0 (Cat# [TT210002]).



Coomassie blue staining of purified FOXP1 protein (Cat# [TP313862]). The protein was produced from HEK293T cells transfected with FOXP1 cDNA clone (Cat# RC213862) using MegaTran 2.0 (Cat# [TT210002]).