

Product datasheet for **RC213860**

ARHGAP4 (NM_001666) Human Tagged ORF Clone

Product data:

Product Type:	Expression Plasmids
Product Name:	ARHGAP4 (NM_001666) Human Tagged ORF Clone
Tag:	Myc-DDK
Symbol:	ARHGAP4
Synonyms:	C1; p115; RGC1; RhoGAP4; SrGAP4
Mammalian Cell Selection:	Neomycin
Vector:	pCMV6-Entry (PS100001)
E. coli Selection:	Kanamycin (25 ug/mL)



[View online »](#)

ORF Nucleotide Sequence:

>RC213860 representing NM_001666
 Red=Cloning site Blue=ORF Green=Tags(s)

TTTTGTAATACGACTCACTATAGGGCGGCCGGGAATTCGTCGACTGGATCCGGTACCGAGGAGATCTGCC
 GCC**CGGATCGCC**

ATGGCCGCTCACGGGAAGCTGCGCGGGAGCGGGGCTGCAGGCTGAGTATGAGACGCAAGTCAAAGAGA
 TGCCTGGCAGCTGAGCGAGCAGCTGCGCTGCCTGGAGCTGCAGGGCAGCTGCGCGGGAGTTGCTGCA
 GGAGCTGGCAGAGTTCATGCGGGCCCGCTGAGGTGGAGCTGGAATACTCCCGGGCTGGAAAAGCTG
 GCCGAGCGCTTCCAGCCGTGGAGGCCGCTGGGGAGCAGCCGGGAGCACAAAGCTTCCGGAAGGAGC
 CGTCCCTCTGTCGCCCTTGACTGCTGGGCGGTGCTGCTGCAGCACACGCGCAGCAGACCCGGGAGAG
 CGCGGCCCTGAGTGAGGTGCTGGCCGGGCCCTGGCCAGCGCCTGAGTACATTGCAGAGGACGTGGGG
 CGCCTGGTCAAGAAGAGCAGGGATCTGGAGCAGCAGCTGCAGGATGAGCTCCTGGAGGTGGTCTCAGAGC
 TCCAGACGGCCAAAGAAGACGTACCAGGCATATCACATGGAGAGCGTGAATGCCGAGGCCAAGCTCCGGGA
 GGCCGAGCGGCAGGAGGAGAAGCGGGCAGGCCGGAGTGTCCCACCACCACCGCTGGTGCCACTGAGGCA
 GGCCCCCTCCGCAAGAGCTCCCTCAAGAAGGGAGGGAGGCTGGTGGAGAAGCGGCAGGCCAAGTTTATGG
 AGCACAAACTCAAGTGCACAAAGGCGCGCAACGAGTACCTGCTTAGCCTGGCTAGTGTCAACGCTGCTGT
 CAGTAACTACTACCTGCATGACGCTTTGGACCTCATGGACTGCTGTGACACAGGGTTCCACCTGGCCCTG
 GGGCAGGTGCTCCGGAGCTACACGGCCGCTGAGAGCCGCACCCAAAGCCTCCCAAGTGCAGGGCCTGGGCA
 GCCTGGAAGAAGCTGTGGAGGCCCTGGATCCTCCAGGGGACAAAGCCAAGTTCTCGAGGTGCATGCTAC
 CGTCTTGTCCCCCGCTGCGCTTTGACTACCACCCCATGATGGGGATGAGGTGGCTGAGATCTGCGTT
 GAAATGGAGCTGCGGGACGAGATTCTGCCAGAGCCAGAATCCAGAGCCGCTGGACCGACAGACCA
 TTGAGACAGAGGAGGTGAACAAGACTCTGAAGGCGACACTGCAGGCCCTGCTGGAGGTGGTGGCCTCGGA
 TGACGGGGATGTGCTTGATTCTTCCAGACCAGCCCTCCACCGAGTCCCTCAAGTCCACCAGCTCAGAC
 CCAGGCAGCCGGCAGGGCCGGAGGCCGCGGCCAGCAGCAGGAGACCGAAACCTTCTACCTCACGAAGC
 TCCAGGAGTATCTGAGTGGACGGAGCATCCTCGCCAAGCTGCAGGCCAAGCACGAGAAGCTGCAGGAGGC
 CCTTCAGCGAGGTGACAAGGAGGAGCAGGAGGTGCTTGGACCCAGTACACACAGAGAAAATCCAGAAG
 AGCCGCCAGCCCCGCCAGCTCCAGTATAACCAGAGACTCTTGGGGGAGACATGGAGAAGTTTATCC
 AGAGCTCAGGCCAGCCTGTGCCCTGGTGGTGGAGAGCTGCATTGCTTCACTCAACTCAATGCGCTGCA
 GCATGAAGGCATCTCCGGGTATCGGGTCCCAGCTCCGGGTCTCAGAGATCCGTGATGCCTTCGAGAGA
 GGGGAGGACCCACTGGTGGAGGGCTGCACTGCCATGACCTGGACTCGGTGGCCGGGGTGTGAAGCTCT
 ACTTCCGGAGCCTGGAGCCCCACTCTTCCCCCAGACCTGTTCCGCGAGCTGCTGGCTTCTCCGAGCT
 GGAGGACACAGCGGAGAGGGTGGAGCACGTGAGCCGCTGCTGTGGCGGCTGCCCGCCGGTGTGGT
 GTTCTGGCTACCTTTACCTTCTCAACCACCTGGCCAGTACAGCGATGAGAACATGATGGACCCCT
 ACAACCTGGCCGTGTGCTTCGGGCCACGCTGCTACCGGTGCCGCTGGGCGAGACCCGGTGGCGCTGCA
 GGGCCGGGTGAACCAGCTGGTGCAGAGCTCATAGTGCAGCCGATCGGGTCTTCCCGCCCTGACCTCG
 CTGCTGGCCCCGTCTACGAGAAGTGCATGGCACCCTTCCGCCAGCTGCCTGGGGACGCCAGCTGG
 AGAGCTGGGGGCGGACAATGATCCGGAGCTGGAAGCCGAGATGCCCGCACAGGAGGATGACCTGGAGGG
 GGTGCTGGAGGCTGTGGCTGCTTTGCCCTACACGGGCCGCACAGCCAGGAGCTGAGCTTCCGGCGGGG
 GACGTAAGTGCAGGAGAGGGCCTCGAGCGACTGGTGGCGGGGGAGCACAAACGGCATGCGGGGCC
 TCATCCCCACAAGTATATCACGCTGCCCGCGGGACGGAGAAGCAGGTGGTGGGCGCAGGGCTGCAGAC
 TGCAGGGGAGTCTGGGAGCAGTCCCGAGGGCCTCCTGGCATCGGAGCTGGTCCACCGGCCAGAGCCATGC
 ACCTCACCTGAGGCCATGGGACCCTCTGGACACAGACGACGCTGCTTGGTCCCAGCTCCCAGAGCAAC
 ACGTGGAGGTGGATAAGGCTGTGGCACAGAATGGACTCTGTGTTAAGGAGCTCTGGGAAAGACCTC
 TGTCCGCCAGGGCCTGGGCCAGCATCTACCACCTCTCCAGTCTGGGCCCGAAGCCAAAGGCCCG
 CCCAGCAGCCGCTGGGAGGAACAAGGCTTCTCCGGGGCCCTGGGGCCAGCTCACCTCAGCTT
 CCCACCCAGGGCTAGACACGACCCCAAGCCACAC

ACGCGTACGCGGCCGCTCGAGCAGAACTCATCTCAGAAGAGGATCTGGCAGCAAATGATATCCTGGATT
 ACAAGGATGACGACGATAAGGTTTAA

Protein Sequence: >RC213860 representing NM_001666
Red=Cloning site Green=Tags(s)

MAAHGKLRREGLQAEYETQVKEMRWQLSEQLRCELELQGELRRELLQELAEFMRRRAEVELEYSRGLKLEK
 AERFSSRGGRLGSSREHQSFKEPSLLSPLHCWAVLLQHTRQQSRESAALSEVLAGPLAQRLSHIAEDVG
 RLVKKSRDLEQQLDLLEVVSELQTAKKTYQAYHMESVNAEAKLREAERQEEKRAGRSVPTTTAGATEA
 GPLRKSSLLKGGRLVEKRQAKFMEHKLKCTKARNEYLLSLASVNAAVSNYYLHDVLDLMDCCDTGFHLAL
 GQVLRSYTAAESRTQASQVQGLGSLEEAVEALDPPGDKAKVLEHVATVFCPPLRFDYHHPDGEVAEICV
 EMELRDEILPRAQNIQSRLDRQTIETEEVNKTLKATLQALLEVVASDDGDVLDLDFQTSPTSELSKSTSSD
 PGRSQAGRRRGGQETETFYTLKQEYLSGRSILAKLQAKHEKLQEALQRGDKKEEQVSWTQYTRKFKQK
 SRQPRPSSQYNQRLFGGDMKFIQSSGQPVPLVVEESCIRFINLNLQHEGIFRVSGAQLRVSEIRDAFER
 GEDPLVEGCTAHDLDVAVGLKLYFRSLEPPLFPPDLFGELLASSELEDTAERVEHVSRLWRLPAPVLV
 VLRYLFTFLNHLAQYSDENMMDPYNLAVCFGPTLLPVPAGQDPVALQGRVNQLVQTLIVQPDVFPPLTS
 LPGPVYEKCMAPPASCLGDAQLES LGADNDPELEAEMPAQEDDLEGVVEAVACFAITGRTAQELSFRRG
 DVLRLHERASSDWWRGEHNGMRGLIPHKYITLPAGTEKQVVGAGLQTAGESGSSPEGLLASELVHRPEPC
 TSPEAMGPSGHRRLVPAPEQHVVDKAVAQNMDSVFKELLGKTSVRQGLGPASTTSPSPGPRSPKAP
 PSSRLGRNKGFSRGPAPASPSASHPQGLDTPPKPH

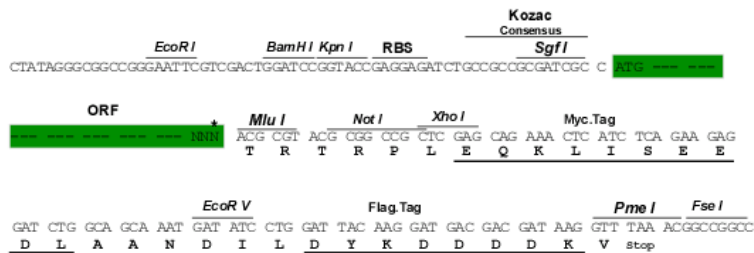
TRTRPLEQKLISEEDLAANDILDYKDDDDKV

Chromatograms: https://cdn.origene.com/chromatograms/mk8029_g12.zip

Restriction Sites: SgfI-MluI

Cloning Scheme:

Cloning sites used for ORF Shuttling:



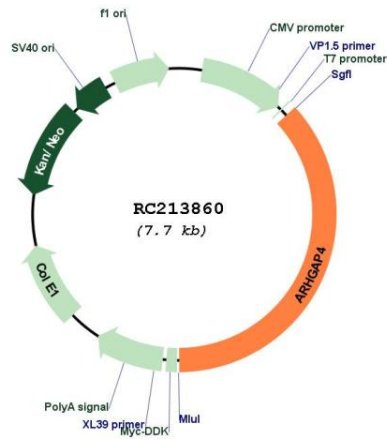
* The last codon before the Stop codon of the ORF

ACCN: NM_001666

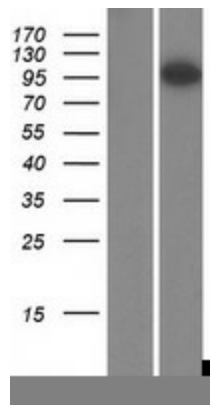
ORF Size: 2838 bp

OTI Disclaimer:	The molecular sequence of this clone aligns with the gene accession number as a point of reference only. However, individual transcript sequences of the same gene can differ through naturally occurring variations (e.g. polymorphisms), each with its own valid existence. This clone is substantially in agreement with the reference, but a complete review of all prevailing variants is recommended prior to use. More info
OTI Annotation:	This clone was engineered to express the complete ORF with an expression tag. Expression varies depending on the nature of the gene.
Components:	The ORF clone is ion-exchange column purified and shipped in a 2D barcoded Matrix tube containing 10ug of transfection-ready, dried plasmid DNA (reconstitute with 100 ul of water).
Reconstitution Method:	<ol style="list-style-type: none">1. Centrifuge at 5,000xg for 5min.2. Carefully open the tube and add 100ul of sterile water to dissolve the DNA.3. Close the tube and incubate for 10 minutes at room temperature.4. Briefly vortex the tube and then do a quick spin (less than 5000xg) to concentrate the liquid at the bottom.5. Store the suspended plasmid at -20°C. The DNA is stable for at least one year from date of shipping when stored at -20°C.
RefSeq:	NM_001666.2 , NP_001657.2
RefSeq Size:	3236 bp
RefSeq ORF:	2841 bp
Locus ID:	393
UniProt ID:	P98171
Cytogenetics:	Xq28
Domains:	RhoGAP, FCH, SH3
MW:	104.8 kDa
Gene Summary:	This gene encodes a member of the rhoGAP family of proteins which play a role in the regulation of small GTP-binding proteins belonging to the RAS superfamily. The protein encoded by the orthologous gene in rat is localized to the Golgi complex and can redistribute to microtubules. The rat protein stimulates the activity of some Rho GTPases in vitro. Genomic deletions of this gene and a neighboring gene have been found in patients with nephrogenic diabetes insipidus. Multiple transcript variants encoding different isoforms have been found for this gene. [provided by RefSeq, Sep 2009]

Product images:



Circular map for RC213860



Western blot validation of overexpression lysate (Cat# [LY419816]) using anti-DDK antibody (Cat# [TA50011-100]). Left: Cell lysates from untransfected HEK293T cells; Right: Cell lysates from HEK293T cells transfected with RC213860 using transfection reagent MegaTran 2.0 (Cat# [TT210002]).