



**Protein Sequence:** >RC213849 protein sequence  
Red=Cloning site Green=Tags(s)

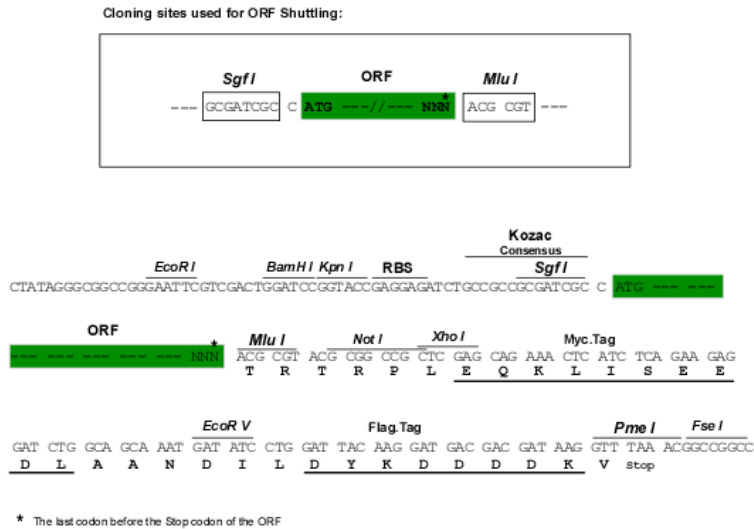
MSLCEDMLLCNYRKCRIKLSGYAWVTACSHIFCDQHSGSEFSRSPAICPACNSTLSGKLDIVRTELSPSE  
 EYKAMVLAGLRPEIVLDISSRALAFWYQVHQRLEYQYNFKAEGHLKQMEKIYTOQQIQSKDVELTSMK  
 GEVTSMKKVL EEYKKKFSDISEKLMERNRQYQKLQGLYDSLRLRNITIANHEGTL EPSMIAQSGVLGFPL  
 GNNSKFPLDNTPVRRNRGDGDGFQFRPFFAGSPTAPEPSNSFFSFVSPSRELEQQQVSSRAFKVKRI

TRTRPLEQKLISEEDLAANDILDYKDDDDKV

**Chromatograms:** [https://cdn.origene.com/chromatograms/mk6396\\_a10.zip](https://cdn.origene.com/chromatograms/mk6396_a10.zip)

**Restriction Sites:** SgfI-MluI

**Cloning Scheme:**



**ACCN:** NM\_182849

**ORF Size:** 831 bp

**OTI Disclaimer:** The molecular sequence of this clone aligns with the gene accession number as a point of reference only. However, individual transcript sequences of the same gene can differ through naturally occurring variations (e.g. polymorphisms), each with its own valid existence. This clone is substantially in agreement with the reference, but a complete review of all prevailing variants is recommended prior to use. [More info](#)

**OTI Annotation:** This clone was engineered to express the complete ORF with an expression tag. Expression varies depending on the nature of the gene.

**Components:** The ORF clone is ion-exchange column purified and shipped in a 2D barcoded Matrix tube containing 10ug of transfection-ready, dried plasmid DNA (reconstitute with 100 ul of water).

**Reconstitution Method:**

1. Centrifuge at 5,000xg for 5min.
2. Carefully open the tube and add 100ul of sterile water to dissolve the DNA.
3. Close the tube and incubate for 10 minutes at room temperature.
4. Briefly vortex the tube and then do a quick spin (less than 5000xg) to concentrate the liquid at the bottom.
5. Store the suspended plasmid at -20°C. The DNA is stable for at least one year from date of shipping when stored at -20°C.

**RefSeq:** [NM\\_182849.2](#)

**RefSeq Size:** 1305 bp

**RefSeq ORF:** 834 bp

**Locus ID:** 57820

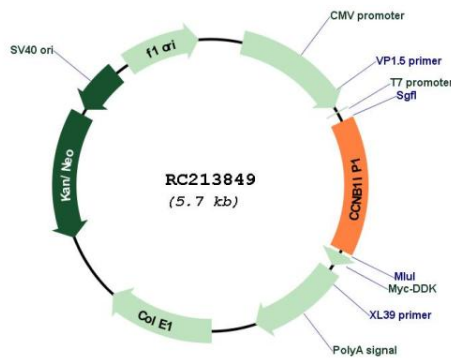
**UniProt ID:** [Q9NPC3](#)

**Cytogenetics:** 14q11.2

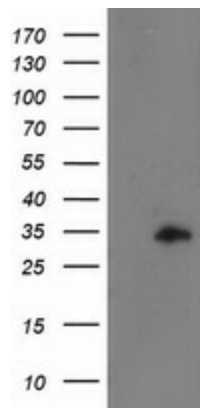
**MW:** 31.5 kDa

**Gene Summary:** HEI10 is a member of the E3 ubiquitin ligase family and functions in progression of the cell cycle through G(2)/M.[supplied by OMIM, Apr 2004]

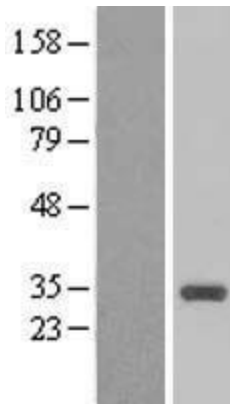
**Product images:**



Circular map for RC213849



HEK293T cells were transfected with the pCMV6-ENTRY control (Cat# [PS100001], Left lane) or pCMV6-ENTRY CCNB1IP1 (Cat# RC213849, Right lane) cDNA for 48 hrs and lysed. Equivalent amounts of cell lysates (5 ug per lane) were separated by SDS-PAGE and immunoblotted with anti-CCNB1IP1 (Cat# [TA502700]). Positive lysates [LY405381] (100ug) and [LC405381] (20ug) can be purchased separately from OriGene.



Western blot validation of overexpression lysate (Cat# [LY405384]) using anti-DDK antibody (Cat# [TA50011-100]). Left: Cell lysates from untransfected HEK293T cells; Right: Cell lysates from HEK293T cells transfected with [RC214140] using transfection reagent MegaTran 2.0 (Cat# [TT210002]).