

## Product datasheet for RC213847

### PTP rho (PTPRT) (NM\_133170) Human Tagged ORF Clone

#### Product data:

Product Type:	Expression Plasmids
Product Name:	PTP rho (PTPRT) (NM_133170) Human Tagged ORF Clone
Tag:	Myc-DDK
Symbol:	PTP rho
Synonyms:	R-PTP-T; RPTP-rho; RPTPrho
Mammalian Cell Selection:	Neomycin
Vector:	pCMV6-Entry (PS100001)
E. coli Selection:	Kanamycin (25 ug/mL)
ORF Nucleotide Sequence:	>RC213847 representing NM_133170 Red=Cloning site Blue=ORF Green=Tags(s)

TTTTGTAATACGACTCACTATAGGGCGGCCGGAATTCGTCGACTGGATCCGGTACCGAGGAGATCTGCC  
GCC**CGATCGCC**

ATGGCGAGCCTCGCCGCGCTCGCCCTCAGCCTGCTCCTGAGGCTGCAGCTGCCGCCACTGCCCGCGCCC  
GGGCTCAGAGCGCCGAGGTGGCTGTTCTTTGATGAGCACTACAGCAACTGTGGTTATAGTGTGGCTCT  
AGGGACCAATGGGTTACCTGGGAGCAGATTAACACATGGGAGAAACCAATGCTGGACCAGGCAGTGCCC  
ACAGGATCTTTCATGATGGTGAACAGCTCTGGGAGAGCCTCTGGCCAGAAGGCCACCTTCTCCTGCCAA  
CCCTGAAGGAGAATGACACCCACTGCATCGACTCCATTACTACTTCTCCAGCCGTGACAGTCCAGCCC  
AGGGGCCTTGAACGTCTACGTGAAGGTGAATGGTGGCCCCAAGGGAACCCTGTGTGGAATGTGTCCGGG  
GTCGCTACTGAGGGCTGGGTGAAGGCAGAGCTCGCCATCAGCACTTTCTGGCCACATTTCTATCAGGTGA  
TATTTGAATCCGTCTCATTGAAGGGTCATCCTGGCTACATCGCCGTGGACGAGGTCCGGGTCTTGTCTCA  
TCCATGCAGAAAAGCACCTCATTTTCTGCGACTCCAAAACGTGGAGGTGAATGTGGGGCAGAAATGCCACA  
TTTCAGTGCATTGCTGGTGGGAAGTGGTCTCAGCATGACAAGCTTTGGCTCCAGCAATGGAATGGCAGGG  
ACACGGCCCTGATGGTCACCCGTGGTCAACCACAGGCGCTTCTCAGCCACAGTCAGTGTGGCAGACAC  
TGCCCAGCGGAGCGTCAGCAAGTACCGCTGTGTGATCCGCTCTGATGGTGGGTCTGGTGTGTCCAACACTAC  
CGGGAGCTGATCGTGAAGAGCCTCCCAGCCCCATTGCTCCCCAGAGCTGCTGGCTGTGGGGCCACAT  
ACCTGTGGATCAAGCCAAATGCCAACTCCATCATCGGGGATGGCCCCATCATCCTGAAGGAAGTGAATA  
TCGCACCACCACAGGCACGTGGGCAGAGACCCACATAGTCGACTCTCCAACTATAAGCTGTGGCATCTG  
GACCCCGATGTTGAGTATGAGATCCGAGTGCTCCTCACACGACCAGGTGAGGGGGGTACGGGACCCGAG  
GGCCTCCCCTCACCACCAGGACCAAGTGTGAGATCCGGTACATGGCCACAGAACGTGGAATCGTAGA  
CATCAGAGCCCGGAGCTGACCCTGCAGTGGGAGCCCTTCGGCTACGCGGTGACCCGCTGCCATAGCTAC  
AACCTCACCGTGCAGTACCAGTATGTGTTCAACCAGCAGCAGTACGAGGCCGAGGAGTCCAGACCT  
CCTCCCCTACACCCTGCGAGGCCTGCGCCCTTCATGACCATCCGGCTGCGACTCTTGTGTCTAACCC  
CGAGGGCCGAATGGAGAGCGAGGAGCTGGTGGTGCAGACTGAGGAAGACGTTCCAGGAGCTTCTCTCTA



[View online »](#)

GAATCCATCCAAGGGGGCCCTTTGAGGAGAAGATCTACATCCAGTGGAACCTCCCAATGAGACCAATG  
GGGTCATCACGCTCTACGAGATCAACTACAAGGCTGTCGGCTCGCTGGACCCAAGTGCTGACCTCTCGAG  
CCAGAGGGGAAAAGTGTCAAGCTCCGGAATGAAACCCACCACCTCTTTGTGGGTCTGTACCCAGGGACC  
ACCTATTCTTACCATCAAGGCCAGCAGCAAAAGGGCTTTGGGCCCTGTACCACCTCGGATTGCCA  
CCAAAATTTACAGTCCATCCATGCTGAGTACGACACAGACACCCATTGAATGAGACAGACAGACCAT  
CACAGTGATGCTGAAACCCGCTCAGTCCCGGGAGCTCCTGTAGTGTATCAGCTGGTGTCAAGGAG  
GAGCGACTTCAGAAGTCACGGAGGGCAGCTGACATTATTGAGTGTCTTTCCGGTCCCGTACCTATCGGA  
ATGCCTCCAGCCTCGATTCTACACTACTTTGCTGCTGAGTTGAAGCCTGCCAACCTGCCTGTACCCCA  
GCCATTTACAGTGGGTGACAATAAGACATAACAATGGCTACTGGAACCTCCTCTCTCCCTGAAAAGC  
TACAGCATCTACTCCAGGCACTCAGCAAAGCCAAATGGAGAGACAAAATCAACTGTGTTCTGGCTA  
CAAAGCACCAATGGGCAGCGCCAGGTGACCCGGGGACTCCACTCTGCCTCCTACCACAGGTGCCTC  
CACCCAGAATTCTAACACTGTGGAGCCAGAGAAGCAGGTGGACAACACCGTGAAGATGGCTGGCGTGATC  
GCTGGCCTCCTCATGTTTCATCATTCTCCTGGCGTGATGCTCACCATCAAAGGAGAAGAAATGCTT  
ATTCTACTCCTATTACTGAAGCTGGCCAAGAAGCAGAAGGAGACCCAGAGTGGAGCCAGAGGGAGAT  
GGGGCCTGTGGCCTCTGCCGACAAACCCACCACCAAGCTCAGCGCCAGCCGAATGATGAAGGCTTCTCT  
TCTAGTTCCTCAGGACGTCAACGGATTACAGATGGCAGCCGCGGGGAGCTTTCCAGCCACCCTCACGA  
TCCAGACTCATCCCTACCGCACCTGTGACCCTGTGGAGATGAGCTACCCCGGGACCAGTTCACACCCGC  
CATCCGGTGGCTGACTTGTGCAGCACATCACGCAGATGAAGAGAGGCCAGGGTACGGTTCAAGGAG  
GAATACGAGGCCTTACCAGAGGGGCAGACAGCTTCGTGGGACACAGCCAAGGAGGATGAAAACCCGAATA  
AGAATCGATATGGGAACATCATCCTACGACCATCCCGGGTGGGCTGCTGGTGTGGATGGAGACCC  
GCACTCTGACTACATCAATGCCAACTACATTGACGGATACCATCGACCTCGGCACTACATTGCGACTCAA  
GGTCCGATGCAGGAGACTGTAAGGACTTTTGGAGAATGATCTGGCAGGAGAATCCGCCAGCATCGTCA  
TGGTCACAAAACCTGGTGGAAAGTGGCAGGGTGAATGTGTGCGATACTGGCCAGATGACACGGAGTCTA  
CGGAGACATTAAGTCAACCTGATTGAAACAGAGCCCTGGCAGAATACGTCATACGCACCTTCACAGTC  
CAGAAGAAAGGCTACCATGAGATCCGGGAGCTCCGCCTTCCACTTCACCAGCTGGCCTGACCAGGGCG  
TTCCCTGCTATGCCACTGGCCTTCTGGGCTTCGTCCGCCAGTCAAGTTCCTCAACCCCCGGAAGCTGG  
GCCCATAGTGGTCCACTGCAGTGTGGGCTGGGCGGACTGGTGCTTATTGCCATTGACACCATGCTT  
GACATGGCCGAGAATGAAGGGTGGTGGACATCTCAACTGCGTGCAGTCCGGGCCAAAGGGTCA  
ACCTGGTACAGACAGAGGAGCAATATGTGTTTGTGCACGATGCCATCCTGGAAGCGTGCCTCTGTGGCAA  
CACTGCCATCCCTGTGTGTGAGTCCGTCTCTACTACAATATCAGCAGGCTGGACCCCAAGACAAC  
TCCAGCCAAATCAAAGATGAATTTAGACCCTCAACATTTGTGACACCCCGTGTGGGCCCGAGGACTGCA  
GCATTGGGCTCCTGCCCGGAACCATGATAAGAATCGAAGTATGGACGTGCTGCCTCTGGACCGCTGCCT  
GCCCTTCCTTATCTCAGTGGACGGAGAATCCAGCAATTACATCAACGCAGCACTGATGGATGCCACAAG  
CAGCCTGCCGCCTTCGTGGTCACCCAGCACCTTACCCAACACCGTGGCAGACTTCTGGAGGCTGGTGT  
TCGATTACAACCTCCTCTGTGGTGTGCTGAATGAGATGGACTGCCCAGTCTGTATGCAGTACTG  
GCCTGAGAAGACCTCCGGGTGCTATGGGCCATCCAGGTGGAGTTCGTCTCCGCAGACATCGACGAGGAC  
ATCATCCACAGAATATCCGCATCTGTAACATGGCCCGGCCACAGGATGGTTATCGTATAGTCCAGCACC  
TCCAGTACATTGGCTGGCCTGCCACCGGGACACGCCCCCTCCAAGCGTCTCTGCTCAAAGTGGTCCG  
ACGACTGGAGAAGTGGCAGGAGCAGTATGACGGGAGGGAGGAGTACTGTGGTCCACTGCCTAAATGGG  
GGAGGCCGTAGTGAACCTTCTGTGCCATCTGCAGTGTGTGAGATGATCCAGCAGCAAAACATCATTG  
ACGTGTTCCACATCGTGAACAACTGCGTAACAACAAATCCAACATGGTGGAGACCCTGGAACAGTATAA  
ATTTGTATACGAGGTGGCACTGGAATATTTAAGCTCCTT

ACGCGTACGCGGCCGCTCGAGCAGAACTCATCTCAGAAGAGGATCTGGCAGCAATGATATCCTGGATT  
ACAAGGATGACGACGATAAGGTTTAA

**Protein Sequence:** >RC213847 representing NM\_133170  
 Red=Cloning site Green=Tags(s)

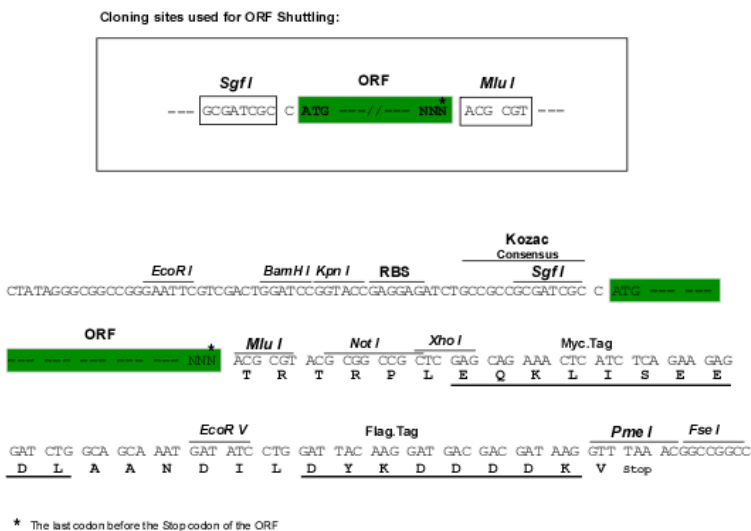
MASLAALALSLLLRQLPPLPGARAQSAAGGCSFDEHYSNCGYSVALGTNGFTWEQINTWEKPLMDQAVP  
 TGSFMMVNSSGRASGQKAHLLPLTKENDTHCIDFHYYFSSRRDRSSPGALNVYVKNVGGPQGNPVWNVSG  
 VVTEGWVKAELAI STF WPHFYQVIFESVSLKGGHPGYIAVDEVVRLAHPCKRAPHFLRLQNVEVNVGQNAT  
 FQCIAGGKWSQHDKLWLQQWNGRDTALMVTRVNVNRRFSATVSVADTAQRSVSKYRCVIRSDGGSGVSNY  
 AELIVKEPPTPIAPPELLAVGATYLWIKPNANSIIGDGP IILKEVEYRTTGTWAEETHIVDSPNYKLWHL  
 DPDVEYEIRVLLTRPGEFFTGPVPPPLTTRTKCADPVHGPQNVEIVDIRARQLTLQWEPFGYAVTRCHSY  
 NLTVQYQYVFNQQQYEAEEVIQTSSHYTLRGLRPFMTIRLRLLLLSNPEGRMESEELVQTEEDVPGAVPL  
 ESIQGGPFEEKIYIQWPPNETNGVITLYEINYKAVGSLDPSADLSSQRGKVFKLRETHHLFVGLYPGT  
 TYSFTIKASTAKGFPPVTRIATKISAPSMPEYDTPLENTDITITVMLKPAQSRGAPVSVYQLVVKE  
 ERLQKSRRAADIECFVSPVSYRNASSLDSLHYFAAELK PANLPVTQPFVGDNKTYNGYWNPLSPLKS  
 YSIYFQALSKANGETKINCVRLATKAPMGSAQVTPGTPLCLLTGASTQNSNTVEPEKQVDNTVKMAGVI  
 AGLLMFI I ILLGVM LTIKRRRNAYSYSYLKAKKQKETQSGAQREMGPVASADKPTTKLSASRNDEGFS  
 SSSQDVNGFTDGSRGELSQPTLTITQTHPYRTC DPVEMSYPRDQFQPAIRVADLLQITQMKRQGQYGFKE  
 EYEALPEGQTASWDTAKEDENRKNRYGNIISYDHSRVLLVLDGDPHSDYINANYIDGYHRPRHYIATQ  
 GPMQETVKDFWRMIWQENSASIWMVTNLVEVGRVKCVRYWPDDTEVYGDIKVTLIETEPLAEVIRTFTV  
 QKKGYHEIRELRLFHFTSWPDHGVPCYATGLLGFVRQVKFLNPPEAGPIVHCSAGAGRTGCFIAIDTML  
 DMAENEGVVDIFNCVRELRAQRVNLVQTEEQYVFVHDAILEACLGNTAIPVCEFRSLYYNISRLDPQTN  
 SSQIKDEFQTLNIVTPRVRPEDCSIGLLPRNHDKNRSMDVLPDRCLPFLISVDGESSNYINAALMDSHK  
 QPAAFVVTQHPLNPTVADFWRLLVFDYNCSSVVMLNEMDTAQFCM QYWPEKTS GCYGP IQVEFVSADIDED  
 I IHRIFRICN MARPQDGYRIVQHLQYIGWPAYRDTPPSKRSLLKVVRRLEKWEQYD GREGRTVVHCLNG  
 GGRSGTFAICSVCEMIQQQNIIDVFHIVKTLRNNKSNMVETLEQYKFFVEVALEYLSSF

TRTRPLEQKLISEEDLAANDILDYKDDDDKV

**Chromatograms:** [https://cdn.origene.com/chromatograms/mk8029\\_h02.zip](https://cdn.origene.com/chromatograms/mk8029_h02.zip)

**Restriction Sites:** Sgfi-MluI

**Cloning Scheme:**



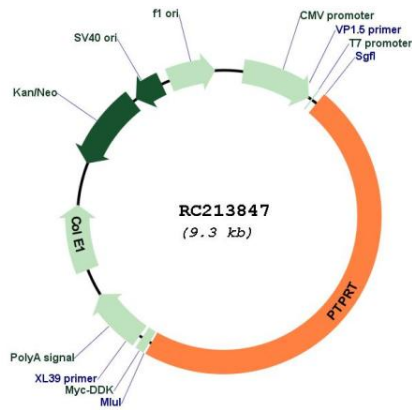
\* The last codon before the Stop codon of the ORF

**ACCN:** NM\_133170

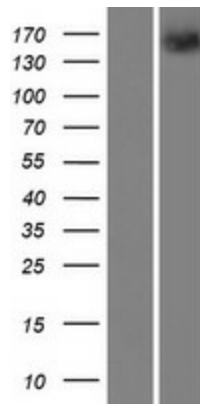
**ORF Size:** 2801 bp

<b>OTI Disclaimer:</b>	The molecular sequence of this clone aligns with the gene accession number as a point of reference only. However, individual transcript sequences of the same gene can differ through naturally occurring variations (e.g. polymorphisms), each with its own valid existence. This clone is substantially in agreement with the reference, but a complete review of all prevailing variants is recommended prior to use. <a href="#">More info</a>
<b>OTI Annotation:</b>	This clone was engineered to express the complete ORF with an expression tag. Expression varies depending on the nature of the gene.
<b>Components:</b>	The ORF clone is ion-exchange column purified and shipped in a 2D barcoded Matrix tube containing 10ug of transfection-ready, dried plasmid DNA (reconstitute with 100 ul of water).
<b>Reconstitution Method:</b>	<ol style="list-style-type: none"><li>1. Centrifuge at 5,000xg for 5min.</li><li>2. Carefully open the tube and add 100ul of sterile water to dissolve the DNA.</li><li>3. Close the tube and incubate for 10 minutes at room temperature.</li><li>4. Briefly vortex the tube and then do a quick spin (less than 5000xg) to concentrate the liquid at the bottom.</li><li>5. Store the suspended plasmid at -20°C. The DNA is stable for at least one year from date of shipping when stored at -20°C.</li></ol>
<b>RefSeq:</b>	<a href="#">NM_133170.4</a>
<b>RefSeq Size:</b>	12710 bp
<b>RefSeq ORF:</b>	4383 bp
<b>Locus ID:</b>	11122
<b>UniProt ID:</b>	<a href="#">O14522</a>
<b>Cytogenetics:</b>	20q12-q13.11
<b>MW:</b>	161.4 kDa
<b>Gene Summary:</b>	The protein encoded by this gene is a member of the protein tyrosine phosphatase (PTP) family. PTPs are known to be signaling molecules that regulate a variety of cellular processes including cell growth, differentiation, mitotic cycle, and oncogenic transformation. This PTP possesses an extracellular region, a single transmembrane region, and two tandem intracellular catalytic domains, and thus represents a receptor-type PTP. The extracellular region contains a meprin-A5 antigen-PTP (MAM) domain, Ig-like and fibronectin type III-like repeats. The protein domain structure and the expression pattern of the mouse counterpart of this PTP suggest its roles in both signal transduction and cellular adhesion in the central nervous system. Two alternatively spliced transcript variants of this gene, which encode distinct proteins, have been reported. [provided by RefSeq, Jul 2008]

Product images:



Circular map for RC213847



Western blot validation of overexpression lysate (Cat# [LY408840]) using anti-DDK antibody (Cat# [TA50011-100]). Left: Cell lysates from untransfected HEK293T cells; Right: Cell lysates from HEK293T cells transfected with RC213847 using transfection reagent MegaTran 2.0 (Cat# [TT210002]).