

Product datasheet for **RC213845**

CD96 (NM_198196) Human Tagged ORF Clone

Product data:

Product Type:	Expression Plasmids
Product Name:	CD96 (NM_198196) Human Tagged ORF Clone
Tag:	Myc-DDK
Symbol:	CD96
Synonyms:	TACTILE
Mammalian Cell Selection:	Neomycin
Vector:	pCMV6-Entry (PS100001)
E. coli Selection:	Kanamycin (25 ug/mL)



[View online »](#)

ORF Nucleotide Sequence:

>RC213845 representing NM_198196
 Red=Cloning site Blue=ORF Green=Tags(s)

TTTTGTAATACGACTCACTATAGGGCGGCCGGAATTCGTCGACTGGATCCGGTACCGAGGAGATCTGCC
 GCC**CGCATCGCC**

ATGGAGAAAAATGGAAATACTGTGCTGTCTATTACATCATCCAGATACATTTTGTCAAGGGAGTTGGG
 AAAAAACAGTCAACACAGAAGAAAATGTTTATGCTACACTTGGCTCTGATGTCAACCTGACCTGCCAAAC
 ACAGACAGTAGGCTTCTTCGTGCAGATGCAATGGTCCAAGGTCACCAATAAGATAGACCTGATTGCTGTC
 TATCATCCCCAATACGGCTTCTACTGTGCCATGGGAGACCCTGTGAGTCACTTGTGACTTTCACAGAAA
 CTCCTGAGAAATGGGTCAAATGGACTCTGCACTTAAGGAATATGTCTTGTTCAGTCAGTGGAAAGTACGA
 GTGTATGCTTGTCTGTATCCAGAGGGCATTGAGACTAAAATCTACAACCTTCTCATTGAGACACACGTT
 ACAGCAGATGAATGGAACAGCAACCATACGATAGAAAATAGAGATAAATCAGACTCTGAAATACCATGCT
 TTCAAATAGCTCCTCAAAAATTCATCTGAGTTCACCTATGCATGGTCGGTGGAAAACAGCAGCACGGA
 TTCTTGGGTCCTCTTTCTAAGGGTATAAAGGAGGATAATGGAACCTCAGGAAACACTTATCTCCAAAAT
 CACCTCATCAGCAATCCACATTAATAAGATAGAGTCAAGCTTGGTACAGACTACAGACTCCACCTCT
 CTCCAGTCCAAAATCTTCGATGATGGGCGGAAGTCTCTTGCCACATTAGAGTCGGTCCCTAACAAAATCTT
 GAGGAGCTCCACCACAGTCAAGGTTTTGCTAAACCAGAAATCCCTGTGATTGTGGAAAATAACTCCACG
 GATGTCTTGGTAGAGAGAAGATTTACCTGCTTACTAAAGAATGTATTTCCCAAAGCAAATATCACATGGT
 TTATAGATGGAAGTTTTCTTCATGATGAAAAAGAAGGAATATATTTACTAATGAAGAGAGAAAAGGCAA
 AGATGGATTTTGGAACTGAAGTCTGTTTTAACAGGGTACATAGTAATAAACAGCCCAATCAGACAAC
 TTGACCATTTGGTGTATGGCTGTCTCCAGTCCAGGAAATAAAGTGTGGAACATCTCATCAGAAAAGA
 TCACTTTTCTCTAGGTTCTGAAATTTCTCAACAGACCCTCCACTGAGTGTACAGAATCTACCTTGA
 CACCCAACCTTCTCCAGCCAGCAGTGTATCTCCTGCAAGATATCCAGCTACATCTTCAGTGACCCTTGTA
 GATGTGAGTGCCTTGAGGCCAAACACCCTCTCAACCCAGCAATTCCAGTATGACTACCGAGGCTTCA
 ACTATCCCTGGACCTCCAGTGGGACAGATACAAAAAATCAGTTTCACGGATACCTAGTGAACATACAG
 TTCATCCCCCTCAGTGCAGGCTCAACACTTCATGACAAATGTCTTTACCAGCACAGCCAGAGCATTTTCA
 GAAGTCCCACAACCTGCCAATGGATCTACGAAAATAATCAGTCCATATCACTGGTATTGTGGTCAATA
 AGCCCAAAGATGGAATGTCTGGCCAGTATTGTAGCAGCTTTACTCTTTTGTGTCATGATATTGTTTGG
 TCTTGGAGTGAGAAAATGGTGTGAGTACAAAAAGAAATAATGGAAGACCTCCACCTTTCAAGCCACCA
 CCACCTCCATCAAGTACTTGCATTCAAGAGCCCAACGAAAGTATCTGCCTTATCATGAGATGGAGA
 CCCTC

ACGCGTACGCGGCCGCTCGAGCAGAAACTCATCTCAGAAGAGGATCTGGCAGCAAATGATATCCTGGATT
 ACAAGGATGACGACGATAAGGTTTAA

Protein Sequence:

>RC213845 representing NM_198196
 Red=Cloning site Green=Tags(s)

MEKKWKYCAVYYIIQIHVKGVWEKTVNTEENVYATLGSVDVNLTCQTQTVGVFFVQMWSKVTNKIDLIAV
 YHPQYGFYCAAGRPEESLVTFTEPENGSKWTLHLRNMSCSVSGRYECLVLYPEGIQTKIYNLLIQTHV
 TADEWNSNHTIEIEINQTLIIPCFQNSSKISSEFTYAWSVENSSTDVSWLLSKGIKEDNGTQETLISQN
 HLISNSTLLKDRVKLGTDYRLHLSPVQIFDDGRKFSCHIRVGNPKILRSSTTVKVFAPKEIPVIVENNST
 DVLVERRFTCLLKNVFPKANITWFDGSLHDEKEGIYITNEERKGDGFLELKSVLTRVHSNPKPAQSDN
 LTIWCMALSPVPGNKVWNISSSEKITFLLGSEISSDPPPLSVTESTLDTQPSPASSVSPARYPATSSVTLV
 DVSALRPNTTPQPSNSSMTTRGFNYPWTSSGTDTKKSVSRIPSETYSSSPSGAGSTLHDNVFTSTARAFS
 EVPTTANGSTKTNHVHITGIVVNKPKDGMSPVIVAALLFCCMILFGLGVRKWCQYQKEIMERPPPFKPP
 PPKIKYTCIQEPNESDLPHYEMETL

TRTRPLEQKLISEEDLAANDILDYKDDDDKV

Chromatograms:

https://cdn.origene.com/chromatograms/mk8013_g05.zip

Restriction Sites: SgfI-MluI

Cloning Scheme:



ACCN: NM_198196

ORF Size: 1755 bp

OTI Disclaimer: Due to the inherent nature of this plasmid, standard methods to replicate additional amounts of DNA in E. coli are highly likely to result in mutations and/or rearrangements. Therefore, OriGene does not guarantee the capability to replicate this plasmid DNA. Additional amounts of DNA can be purchased from OriGene with batch-specific, full-sequence verification at a reduced cost. Please contact our customer care team at custsupport@origene.com or by calling 301.340.3188 option 3 for pricing and delivery.

The molecular sequence of this clone aligns with the gene accession number as a point of reference only. However, individual transcript sequences of the same gene can differ through naturally occurring variations (e.g. polymorphisms), each with its own valid existence. This clone is substantially in agreement with the reference, but a complete review of all prevailing variants is recommended prior to use. [More info](#)

OTI Annotation: This clone was engineered to express the complete ORF with an expression tag. Expression varies depending on the nature of the gene.

Components: The ORF clone is ion-exchange column purified and shipped in a 2D barcoded Matrix tube containing 10ug of transfection-ready, dried plasmid DNA (reconstitute with 100 ul of water).

Reconstitution Method:

1. Centrifuge at 5,000xg for 5min.
2. Carefully open the tube and add 100ul of sterile water to dissolve the DNA.
3. Close the tube and incubate for 10 minutes at room temperature.
4. Briefly vortex the tube and then do a quick spin (less than 5000xg) to concentrate the liquid at the bottom.
5. Store the suspended plasmid at -20°C. The DNA is stable for at least one year from date of shipping when stored at -20°C.

RefSeq: [NM_198196.1](#), [NP_937839.1](#)

RefSeq Size: 4561 bp

RefSeq ORF: 1758 bp

Locus ID: 10225

UniProt ID: [P40200](#)

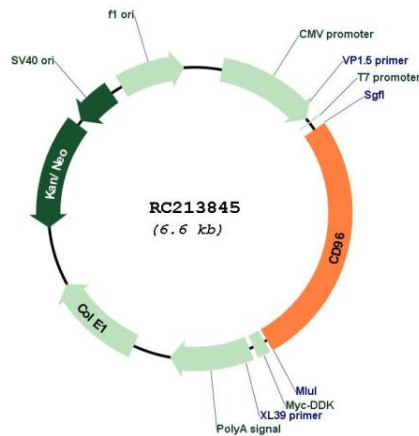
Cytogenetics: 3q13.13-q13.2

Protein Families: Druggable Genome, Transmembrane

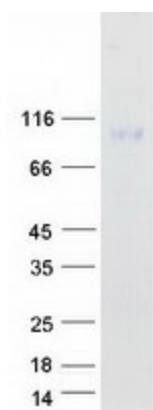
MW: 63 kDa

Gene Summary: The protein encoded by this gene belongs to the immunoglobulin superfamily. It is a type I membrane protein. The protein may play a role in the adhesive interactions of activated T and NK cells during the late phase of the immune response. It may also function in antigen presentation. Alternative splicing generates multiple transcript variants encoding distinct isoforms. [provided by RefSeq, Jan 2016]

Product images:



Circular map for RC213845



Coomassie blue staining of purified CD96 protein (Cat# [TP313845]). The protein was produced from HEK293T cells transfected with CD96 cDNA clone (Cat# RC213845) using MegaTran 2.0 (Cat# [TT210002]).