

Product datasheet for RC213842

SNX20 (NM_182854) Human Tagged ORF Clone

Product data:

Product Type:	Expression Plasmids
Product Name:	SNX20 (NM_182854) Human Tagged ORF Clone
Tag:	Myc-DDK
Symbol:	SNX20
Synonyms:	SLIC1
Mammalian Cell Selection:	Neomycin
Vector:	pCMV6-Entry (PS100001)
E. coli Selection:	Kanamycin (25 ug/mL)
ORF Nucleotide Sequence:	>RC213842 representing NM_182854 Red=Cloning site Blue=ORF Green=Tags(s)

TTTTGTAATACGACTCACTATAGGGCGGCCGGAATTCGTCGACTGGATCCGGTACCGAGGAGATCTGCC
GCC**CGATCGCC**

ATGGCAAGTCCAGAGCACCCCTGGGAGCCCTGGCTGCATGGGACCCATAACCCAGTGCACGGCAAGGACCC
AGCAGGAAGCACCAGCCACTGGCCCCGACCTCCCGCACCCAGGACCTGACGGGCACCTAGACACACACAG
TGGCCTGAGCTCCAACCTCAGCATGACCACGCGGGAGCTTCAGCAGTACTGGCAGAACCAGAAATGCCGC
TGAAGCACGTCAAACCTGCTCTTTGAGATCGCTTCAGCTCGCATCGAGGAGAGAAAAGTCTCTAAGTTTG
TGGTGTACAAAATCATCGTCATCCAGACTGGGAGCTTTGACAACAACAAGCCGTCCTGGAACGGCGCTA
TTCCGACTTCGCGAAGCTCCAGAAAGCGCTGCTGAAGACGTTTCAGGGAGGAGATCGAAGACGTGGAGTTT
CCCAGGAAGCACCTGACTGGGAACCTTCGCTGAGGAGATGATCTGTGAGCGTCGGCGGCCCTGCAGGAGT
ACCTGGGCCTGCTCTACGCCATCCGCTGCGTGCGCCGCTCCCGGGAGTTCTTGACTTCCTCACGCGGCC
GGAGCTGCGCGAGGCTTTTCGGCTGCCTGCGGGCCGGCCAGTACCCGCGCGCCCTGGAGCTGCTGCTGCGC
GTGCTGCCGCTGCAGGAGAAGCTCACCGCCACTGCCCTGCGGCCGCGTCCCGGCCCTGTGCGCCGTGC
TGCTGTGCCACCGCACCTCGACCGCCCCGCGAGGCCCTCGCGCCGGAGAGAGGGCCCTGCAGCGCCT
GCAGGCCCGGGAGGGCCATCGCTACTATGCGCCTCTGCTGGACGCCATGGTCCGCTGGCCTACGCGCTG
GGCAAGGACTTCGTGACTCTGCAGGAGAGGCTGGAGGAGAGCCAGCTCCGGAGGCCACGCCCCGAGGCA
TCACCCGAAGGAGCTCACTGTGCGAGAATACCTGCAC

ACGCGTACGCGGCCGCTCGAGCAGAAACTCATCTCAGAAGAGGATCTGGCAGCAAATGATATCCTGGATT
ACAAGGATGACGACGATAAGGTTTAA



[View online »](#)

Protein Sequence: >RC213842 representing NM_182854
Red=Cloning site Green=Tags(s)

MASPEHPGSPGCMGPITQCTARTQQEAPATGPDLPHPGPDGHLDTHTSGLSSNSSMTTRELQQYWQNQKCR
 WKHVKLLFEIASARIEERKVSKFVYQIIVIQTGSFDNNKAVLERRYSDFAKLQKALLKTFREEIEDVEF
 PRKHLTGNFAEEMICERRRALQEYLGLLYAIRCVRRSREFLDFLTRPELREAFGLRAGQYPRALELLLR
 VLPLQEKLTAHCPAAAVPALCAVLLCHRDLDRPAEFAAGERALQRLQAREGHRYYAPLLDAMVRLAYAL
 GKDFVTLQERLEESQLRRPTPRGITLTKELTVREYLH

TRTRPLEQKLISEEDLAANDILDYKDDDDKV

Chromatograms: https://cdn.origene.com/chromatograms/mk8030_a04.zip

Restriction Sites: SgfI-MluI

Cloning Scheme:



ACCN: NM_182854

ORF Size: 948 bp

OTI Disclaimer: The molecular sequence of this clone aligns with the gene accession number as a point of reference only. However, individual transcript sequences of the same gene can differ through naturally occurring variations (e.g. polymorphisms), each with its own valid existence. This clone is substantially in agreement with the reference, but a complete review of all prevailing variants is recommended prior to use. [More info](#)

OTI Annotation: This clone was engineered to express the complete ORF with an expression tag. Expression varies depending on the nature of the gene.

Components: The ORF clone is ion-exchange column purified and shipped in a 2D barcoded Matrix tube containing 10ug of transfection-ready, dried plasmid DNA (reconstitute with 100 ul of water).

Reconstitution Method:

1. Centrifuge at 5,000xg for 5min.
2. Carefully open the tube and add 100ul of sterile water to dissolve the DNA.
3. Close the tube and incubate for 10 minutes at room temperature.
4. Briefly vortex the tube and then do a quick spin (less than 5000xg) to concentrate the liquid at the bottom.
5. Store the suspended plasmid at -20°C. The DNA is stable for at least one year from date of shipping when stored at -20°C.

RefSeq: [NM_182854.4](#)

RefSeq Size: 1457 bp

RefSeq ORF: 951 bp

Locus ID: 124460

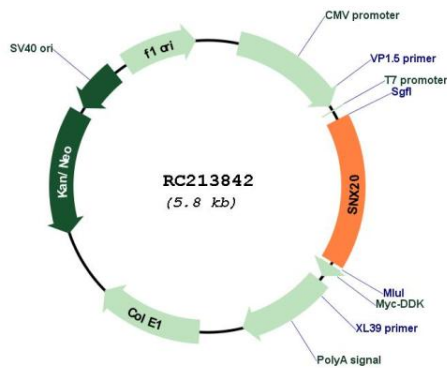
UniProt ID: [Q7Z614](#)

Cytogenetics: 16q12.1

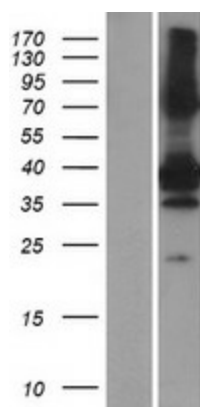
MW: 36 kDa

Gene Summary: SNX20 interacts with the cytoplasmic domain of PSGL1 (SELPLG; MIM 600738) and cycles PSGL1 into endosomes.[supplied by OMIM, Feb 2010]

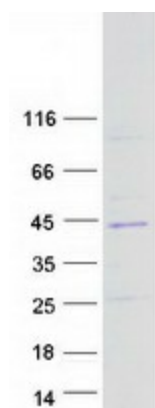
Product images:



Circular map for RC213842



Western blot validation of overexpression lysate (Cat# [LY405386]) using anti-DDK antibody (Cat# [TA50011-100]). Left: Cell lysates from untransfected HEK293T cells; Right: Cell lysates from HEK293T cells transfected with RC213842 using transfection reagent MegaTran 2.0 (Cat# [TT210002]).



Coomassie blue staining of purified SNX20 protein (Cat# [TP313842]). The protein was produced from HEK293T cells transfected with SNX20 cDNA clone (Cat# RC213842) using MegaTran 2.0 (Cat# [TT210002]).