

Product datasheet for **RC213839**

RNF38 (NM_022781) Human Tagged ORF Clone

Product data:

Product Type:	Expression Plasmids
Product Name:	RNF38 (NM_022781) Human Tagged ORF Clone
Tag:	Myc-DDK
Symbol:	RNF38
Mammalian Cell Selection:	Neomycin
Vector:	pCMV6-Entry (PS100001)
E. coli Selection:	Kanamycin (25 ug/mL)



[View online »](#)

ORF Nucleotide Sequence:

>RC213839 representing NM_022781
 Red=Cloning site Blue=ORF Green=Tags(s)

TTTTGTAATACGACTCACTATAGGGCGGCCGGAATTCGTCGACTGGATCCGGTACCGAGGAGATCTGCC
 GCC**CGGATCGCC**

ATGGCTTGAAGATATCTCCCGGGCCAATTCAGCATCTCTACCTGGCCATCCTAACAGGTGATTTGTG
 AAAGGGTGAAGTTCAGAGCCTGTTCCCTCCTCCCAAGTGATCAGAACAACCTACCGTTCAAGAGGATGC
 TCACTTCAAAGCTTTCTCCAGAGTGAAGATAGTCCAAGTCTAAGAGACAGCGCCTCTCTCATTAGTC
 TTTGATTATACATCAGCATCACCAGCTCCCTCACCACCAATGCGACCATGGGAGATGACATCAAATAGGC
 AGCCCCCTTCAGTTCGACCAAGCCAACATCACTTCTCAGGGGAACGATGCAACACACCTGCACGCAACAG
 AAGAAGTCTCTGTGAGGCGCCAGAGAGGAAGAAGGGATCGTCTGTCTCGACATAATCCATTAGTCAA
 GATGAAAATATCACCATCTCCCTACGCACAGCAGCAAGCAATAGAGGAGCCTCGAGCCTCCACCCTC
 CGAATGTATCTCCCGTCTGCTACATCTGCTGCTCATCCACCCAGCAGAAATGCAGTATGTTGACAT
 ACATGATCAGCTCCATCAAGGAACAGTCCCTGTTTCTTACACAGTAACAACAGTGGCACCACATGGGATT
 CCACTCTGCACAGGCCAGCACATCCCTGCTGTAGTACACAGCAGGTCCCAGGATGCTCTGTGGTTTTCA
 GTGGACAGCACCTCCCTGTCTGTAGTGTGCCTCCTCCAATGCTTCAGGCATGTTCAAGTTCAGCACTTACC
 AGTACCATATGCTGCATTCACCCCTTATTTCTAGTGATCCATTTCTTATACATCCTCCTCACCTTTCT
 CCCCATCATCCTCCTCATTTGCCACCACCAGGCCAGTTTGTCCCTTTCCAACACAGCAATCAGCATCGC
 CTCTGCAAAGGATAGAAAATGAAGTGGAACTCTTAGGAGAACATCTCCAGTAGGAGGTTTTACTTACCC
 TCCATCAGCCCACCCCAACATTACCTCCATCAGCTCCCTTGCAGTCTTAACACATGATCCTTTGCAT
 CAGGAGGTGCTCTTTGGAGTACCTTATCCTCCATTTATGCCTCGGAGGCTTACAGGACGTAGTAGATACC
 GATCCCAGCAGCAATACCACCTCCCTTATCATCCAGCTTACTGCCATATGTGTTATCAATGCTTCC
 AGTGCCACCTGCAGTGGGCCCAACTTTCAGCTTTGAATTAGATGTAGAAGATGGAGAAGTAGAAAATTAC
 GAGGCCCTGTAAACCTGGCAGAGCGACTGGGAGAGGCAAGCCTCGTGGACTGACTAAAGCAGATATTG
 AACAACTCCTTCTTATCGGTTCAATCCTAACACCACAGTCAAGCAGACTTTGTGTGTAGTATGCAT
 GTGTGATTTTGTGCAAGGCAGCTACTTAGAGTCTTACCCTGTAACCACGAGTTCATGCCAAGTGTGT
 GACAAATGGCTTAAGGCAATCGTACTTGCCCAATTTGCCGAGCTGATGCTTCAGAAGTGCATCGGGATT
 CAGAA

ACGCGTACGCGGCCGCTCGAGCAGAAACTCATCTCAGAAGAGGATCTGGCAGCAAATGATATCCTGGATT
 ACAAGGATGACGACGATAAGGTTTAA

Protein Sequence:

>RC213839 representing NM_022781
 Red=Cloning site Green=Tags(s)

MACKISPGANSASLPGHPNKVICERVRLQSLFPLLPSDQNTTVQEDAHFKAFFQSEDSPSPKRQRLSHSV
 FDYTSASPAPSPMPRPWEMTSNRQPPSVRPSQHHSGERCNTPARNRRSPPVRRQRGRDRLSRHNSISQ
 DENEYHLLPYAQQQAIEEPRAFHPNVSRLRHAAHPPQNAVMVDIHDQLHQGTVPVSYTVTTVAPHGI
 PLCTGQHIPACSTQQVPGCSVVFSGQHLPVCSVPPMLQACSVQHLVPVYAAFPLISSDPFLIHPPHLS
 PHHPPHLPVPPGFVFPQTQQRSPLQRIENEVELLGEHLPVGGFTYPPSAHPPTLPPSAPLQFLTHDPLH
 QEVSFVGPYPFMPRRLTGRSRYRSQPIPPPYHPSLLPYVLSMLPVPPAVGPTFSFELDVEDGEVENY
 EALLNLAERLGEAKPRGLTKADIEQLPSYRFNPNNHQSEQLTLCVVMCDFESRQLLRVLPNHEFHAKCV
 DKWLVKANTCPICRADASEVHRDSE

TRTRPLEQKLISEEDLAANDILDYKDDDDKV

Chromatograms:

https://cdn.origene.com/chromatograms/mk6486_a03.zip

Restriction Sites:

Sgfl-MluI

Cloning Scheme:


ACCN: NM_022781

ORF Size: 1545 bp

OTI Disclaimer: The molecular sequence of this clone aligns with the gene accession number as a point of reference only. However, individual transcript sequences of the same gene can differ through naturally occurring variations (e.g. polymorphisms), each with its own valid existence. This clone is substantially in agreement with the reference, but a complete review of all prevailing variants is recommended prior to use. [More info](#)

OTI Annotation: This clone was engineered to express the complete ORF with an expression tag. Expression varies depending on the nature of the gene.

Components: The ORF clone is ion-exchange column purified and shipped in a 2D barcoded Matrix tube containing 10ug of transfection-ready, dried plasmid DNA (reconstitute with 100 ul of water).

- Reconstitution Method:**
1. Centrifuge at 5,000xg for 5min.
 2. Carefully open the tube and add 100ul of sterile water to dissolve the DNA.
 3. Close the tube and incubate for 10 minutes at room temperature.
 4. Briefly vortex the tube and then do a quick spin (less than 5000xg) to concentrate the liquid at the bottom.
 5. Store the suspended plasmid at -20°C. The DNA is stable for at least one year from date of shipping when stored at -20°C.

RefSeq: [NM_022781.5](#)

RefSeq Size: 5101 bp

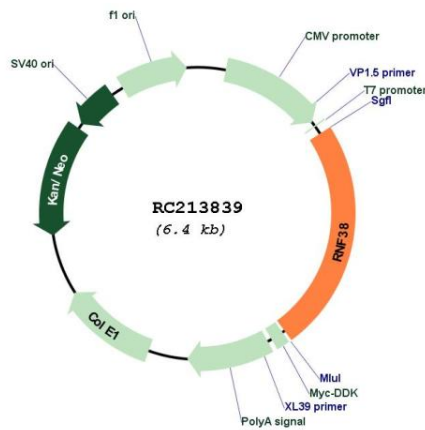
RefSeq ORF: 1548 bp

Locus ID: 152006

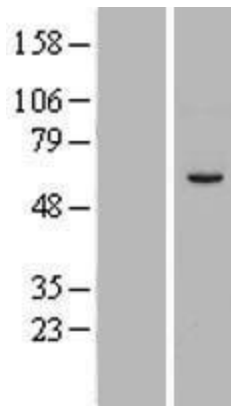
UniProt ID: [Q9H0F5](#)

Cytogenetics: 9p13.2
Domains: RING
Protein Families: Druggable Genome
MW: 57.4 kDa
Gene Summary: This gene encodes a protein with a coiled-coil motif and a RING-H2 motif (C3H2C2) at its carboxy-terminus. The RING motif is a zinc-binding domain found in a large set of proteins playing roles in diverse cellular processes including oncogenesis, development, signal transduction, and apoptosis. Multiple transcript variants encoding different isoforms have been found for this gene. [provided by RefSeq, Dec 2008]

Product images:



Circular map for RC213839



Western blot validation of overexpression lysate (Cat# [LY411570]) using anti-DDK antibody (Cat# [TA50011-100]). Left: Cell lysates from untransfected HEK293T cells; Right: Cell lysates from HEK293T cells transfected with RC213839 using transfection reagent MegaTran 2.0 (Cat# [TT210002]).