

Product datasheet for **RC213838**

CCM2 (NM_001029835) Human Tagged ORF Clone

Product data:

Product Type:	Expression Plasmids
Product Name:	CCM2 (NM_001029835) Human Tagged ORF Clone
Tag:	Myc-DDK
Symbol:	CCM2
Synonyms:	C7orf22; OSM; PP10187
Mammalian Cell Selection:	Neomycin
Vector:	pCMV6-Entry (PS100001)
E. coli Selection:	Kanamycin (25 ug/mL)



[View online »](#)

ORF Nucleotide Sequence:

>RC213838 representing NM_001029835
 Red=Cloning site Blue=ORF Green=Tags(s)

TTTTGTAATACGACTCACTATAGGGCGGCCGGAATTCGTCGACTGGATCCGGTACCGAGGAGATCTGCC
 GCC**CGGATCGCC**

ATGCATAGTAGCTGTCGGCAGAGGAGGAACAGAAATCTCTCAAAGAAATTCCTCAAACAGAATTTACACA
 CAGGGTATTCCATGGAGAATGAGCCTGGAATTGTCTCGCATTAAACGAGTATTCTAAAAGGTGAAAA
 GAGTAGAGATAAGAAAGCCCATGAGAAGGTGACAGAGAGGCGCCCTCTGCACACTGTGGTGTTCATTG
 CCTGAGCGCTCGAGCCAGACAGACTGCTGAGCGACTATATTGAGAAGGAGGTAAAGTATTTAGGTCAGT
 TAACGTCCATACCAGGATACCTGAATCCCTCCAGTAGGACTGAAATCCTGCATTTATAGACAATGCAAA
 GAGAGCCACCAGCTTCCGGGACACTTGACTCAGGAGCACGATGCTGTGCTCAGCCTGTCTGCGTACAAC
 GTCAAGCTGGCCTGGAGGGACGGGAGGATATCATCTCAGGGTGCCATCCATGACATCGCCGCCGTCT
 CCTATGTTGGGATGACCTGCACACCTGGTGGTCTGAAGACAGCCAGGACCCAGGGATCTCCCCAG
 CCAGAGTCTGTGTGCGGAAAGTTCAGAGGCCCTCAGTGCAGGCTCCCTGTGCGAGAGTGCAGTTGGGCC
 GTGGAGGCATGCTGCCTGGTCTATCTGGCTGCAGAGAGCAAGGTGCTGCGGAGGAGCTTTGCTGTCTGC
 TAGGCCAGGTCTCCAGGTTGTTACACGGAGTCCACCATCGACTTTCTGGACAGAGCGATATTTGATGG
 GGCTCTACCCCGACCCACCACCTGTCCCTGCACAGCGATGACTCTTACAAAAGTGGACATTAAGGAG
 ACCTACGAGGTGGAAGCCAGCACTTTCTGCTTCCCTGAATCTGTGGATGTGGGTGGTGCATACCCCA
 GCAAGACCATCAGTGAGAGCGAGCTGAGCGCCAGCGCCACTGAGCTGTGCGAGACTACATGCTGACGCT
 GCGACCAAGCTGTCATCACAGGAGATCCAGCAGTTTGCAGCACTGCTGCAGGATACCGCAATGGGGCC
 TCTATCCACGAGTTCTGCATCAACCTGCGGCAGCTCTACGGGGACAGCCGAAGTTCCTGCTGCTGGTC
 TGAGGCCCTTCACTCCCTGAGAAGGACAGCCAGCACTTCGAGAATTCCTGGAGACCATTGGCGTGAAGGA
 TGCCCGCGGCATCATCACTGACAGCTTTGGCAGGCACCGCGGGCCCTGAGCACCACATCCAGTTCACC
 ACCAATGGGAACAGGGCCACGGGACGCTCTGATGACCGGTGCGCACCTCAGAGGGGATGAGTGGGACC
 GCATGATCTCGGACATCAGCAGCGACATTGAGGCGCTGGGCTGCAGCATGGACCAGGACTCAGCA

ACGCGTACGCGGCCGCTCGAGCAGAACTCATCTCAGAAGAGGATCTGGCAGCAAATGATATCTGGATT
 ACAAGGATGACGACGATAAGGTTTAA

Protein Sequence:

>RC213838 representing NM_001029835
 Red=Cloning site Green=Tags(s)

MHSSCRQRNQLSKEIPQTEFHTGYSMENEPGIVSPFKRVFLKGEKSRDKKAHEKVTERRPLHTVVLSL
 PERVEPDRLLSDYIEKEVKYLGQLTSIPGYLNPSRTEILHFIDNAKRAHQLPGHLTQEHDVLSL SAYN
 VKLAWRDGEDIIILRVPIHDIAAVSYVRDAAHLVVLKTAQDPGISPSQSLCAESSRGLSAGSLSESAVGP
 VEACCLVILAAESKVAEELCCLLGQVFQVYTESTIDFLDRAIFDGASTPTHHL SLHSDSSTKVDIKE
 TYEVEASTFCFPEVVDVGGASPHSKTISESELSASATELLQDYMLTLRKLSSQEIQQFAALLHEYRNGA
 SIHEFCINLRQLYGDSRKFLLLGLRPF IPEKDSQHFENFLETIGVKDGRGII TDSFGRHRRALSTTSST
 TNGNRATGSSDDRSAPSEGDEWDRMISDISSDIEALGCSMDQDSA

TRTRPLEQKLISEEDLAANDILDYKDDDDKV

Chromatograms:

https://cdn.origene.com/chromatograms/mk8061_g10.zip

Restriction Sites:

Sgfl-Mlul

Cloning Scheme:


ACCN: NM_001029835

ORF Size: 1395 bp

OTI Disclaimer: The molecular sequence of this clone aligns with the gene accession number as a point of reference only. However, individual transcript sequences of the same gene can differ through naturally occurring variations (e.g. polymorphisms), each with its own valid existence. This clone is substantially in agreement with the reference, but a complete review of all prevailing variants is recommended prior to use. [More info](#)

OTI Annotation: This clone was engineered to express the complete ORF with an expression tag. Expression varies depending on the nature of the gene.

Components: The ORF clone is ion-exchange column purified and shipped in a 2D barcoded Matrix tube containing 10ug of transfection-ready, dried plasmid DNA (reconstitute with 100 ul of water).

Reconstitution Method:

1. Centrifuge at 5,000xg for 5min.
2. Carefully open the tube and add 100ul of sterile water to dissolve the DNA.
3. Close the tube and incubate for 10 minutes at room temperature.
4. Briefly vortex the tube and then do a quick spin (less than 5000xg) to concentrate the liquid at the bottom.
5. Store the suspended plasmid at -20°C. The DNA is stable for at least one year from date of shipping when stored at -20°C.

RefSeq: [NM_001029835.2](#), [NP_001025006.1](#)

RefSeq Size: 2140 bp

RefSeq ORF: 1398 bp

Locus ID: 83605

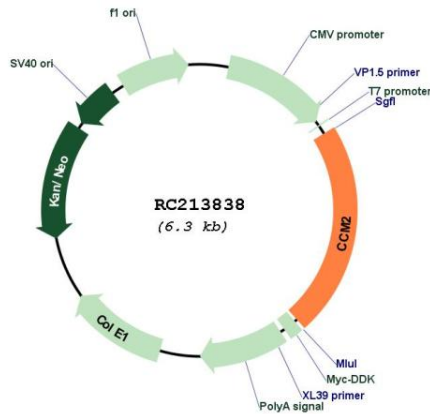
UniProt ID: [Q9BSQ5](#)

Cytogenetics: 7p13

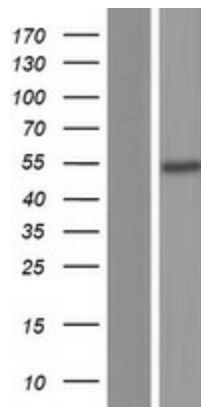
MW: 51.2 kDa

Gene Summary: This gene encodes a scaffold protein that functions in the stress-activated p38 Mitogen-activated protein kinase (MAPK) signaling cascade. The protein interacts with SMAD specific E3 ubiquitin protein ligase 1 (also known as SMURF1) via a phosphotyrosine binding domain to promote RhoA degradation. The protein is required for normal cytoskeletal structure, cell-cell interactions, and lumen formation in endothelial cells. Mutations in this gene result in cerebral cavernous malformations. Multiple transcript variants encoding different isoforms have been found for this gene.[provided by RefSeq, Nov 2009]

Product images:



Circular map for RC213838



Western blot validation of overexpression lysate (Cat# [LY422467]) using anti-DDK antibody (Cat# [TA50011-100]). Left: Cell lysates from untransfected HEK293T cells; Right: Cell lysates from HEK293T cells transfected with RC213838 using transfection reagent MegaTran 2.0 (Cat# [TT210002]).