

Product datasheet for RC213826

CRLS1 (NM_019095) Human Tagged ORF Clone

Product data:

Product Type: Expression Plasmids
Product Name: CRLS1 (NM_019095) Human Tagged ORF Clone
Tag: Myc-DDK
Symbol: CRLS1
Synonyms: C20orf155; CLS; CLS1; dj967N21.6; GCD10
Mammalian Cell Selection: Neomycin
Vector: pCMV6-Entry (PS100001)
E. coli Selection: Kanamycin (25 ug/mL)
ORF Nucleotide Sequence: >RC213826 representing NM_019095
 Red=Cloning site Blue=ORF Green=Tags(s)

TTTTGTAATACGACTCACTATAGGGCGGCCGGAATTCGTCGACTGGATCCGGTACCGAGGAGATCTGCC
 GCC**CGATCGCC**

ATGCTAGCCTTGCGCGTGGCGCGCGGCTCGTGGGGGGCCCTGCGCGGCGCCGCTTGGACTCCGGGAACGC
 GGCCGAGTAAGCGACGCGCCTGCTGGGCCCTGCTGCCGCCGTGCCCTGCTGCTTGGGCTGCCTGGCCGA
 ACGCTGGAGGCTGCGTCCGGCCGCTCTTGGCTTGGGCTGCCCGGATCGCCAGCGGAACCACTGTTTCG
 GCGCGGGGAAGGCGGCTCCAGGCCAGCGGCCGAGCGGGCGCCGCTGCCGAAGCCCCGGGCGGCCAGT
 GGGCCCCGGCGAGCACCCCAGCCTGTATGAAAACCCATGGACAATCCCGAATATGTTGCAATGACGAG
 AATTGGCTTGGCCCCAGTCTGGGCTATTTGATTATTGAAGAAGATTTTAAATATTGCACTAGGAGTTTTT
 GCTTTAGCTGGACTAACAGATTTGTTGGATGGATTTATTGCTCGAACTGGGCAATCAAAGATCAGCTT
 TGGGAAGTGCTCTTGATCCACTTGCTGATAAAATACTTATCAGTATCTTATATGTTAGCTTGACCTATGC
 AGATCTTATTCCAGTTCTACTTACTTACATGATCATTTGAGAGATGTAATGTTGATTGCTGCTGTTTTT
 TATGTCAGATACCGAACTCTTCCAACACCACGAACACTTGCCAAGTATTTCAATCCTTGCTATGCCACTG
 CTAGGTTAAAACCAACATTCATCAGCAAGTGAATACAGCAGTCCAGTTAATCTTGGTGGCAGCTTCTTT
 GGCAGCTCCAGTTTTCACTATGCTGACAGCATTTATCTTCAGATACTATGGTGTTTTACAGCTTTCACC
 ACAGCTGCATCAGCTTATAGTTACTATCATTATGGCCGGAAGACTGTTCCAGGTGATAAAAGAC

ACGCGTACGCGGCCGCTCGAGCAGAAACTCATCTCAGAAGAGGATCTGGCAGCAAATGATATCCTGGATT
 ACAAGGATGACGACGATAAGGTTTAA



[View online »](#)

Protein Sequence: >RC213826 representing NM_019095
Red=Cloning site Green=Tags(s)

MLALRVARGSWGALRGAAWTPGTRPSKRRACWALLPPVPCCLGCLAERWLRPAALGLRLPGIGQRNHCS
 GAGKAAPRPAAGAGAAAEAPGGQWGPASTPSLYENPWTIPNMLSMTRIGLAPVLGYLIIIEEDFNIALGVF
 ALAGLTDLLDGF IARNWANQRSALGSALDPLADKILISILYVSLTYADLIPVLLTYMIISRDVMLIAAVF
 YVRYRTLPTPRTLAKYFNPCYATARLKPTFISKVNTAVQLILVAASLAAPVFNYADSIYLQILWCFTAFT
 TAASAYSYYHYGRKTVQVIKD

TRTRPLEQKLISEEDLAANDILDYKDDDDKV

Chromatograms: https://cdn.origene.com/chromatograms/mk6492_d03.zip

Restriction Sites: SgfI-MluI

Cloning Scheme:



ACCN: NM_019095

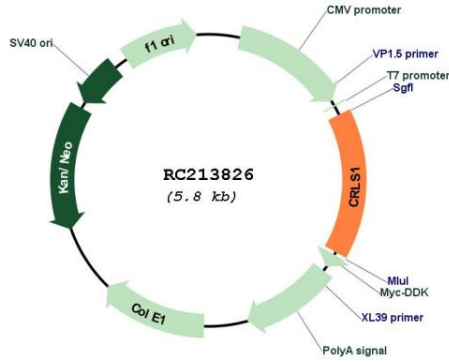
ORF Size: 903 bp

OTI Disclaimer: Due to the inherent nature of this plasmid, standard methods to replicate additional amounts of DNA in E. coli are highly likely to result in mutations and/or rearrangements. Therefore, OriGene does not guarantee the capability to replicate this plasmid DNA. Additional amounts of DNA can be purchased from OriGene with batch-specific, full-sequence verification at a reduced cost. Please contact our customer care team at custsupport@origene.com or by calling 301.340.3188 option 3 for pricing and delivery.

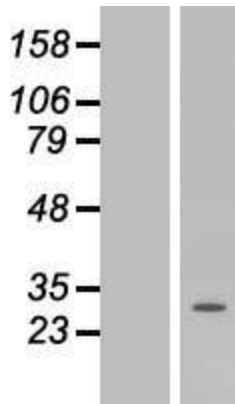
The molecular sequence of this clone aligns with the gene accession number as a point of reference only. However, individual transcript sequences of the same gene can differ through naturally occurring variations (e.g. polymorphisms), each with its own valid existence. This clone is substantially in agreement with the reference, but a complete review of all prevailing variants is recommended prior to use. [More info](#)

OTI Annotation:	This clone was engineered to express the complete ORF with an expression tag. Expression varies depending on the nature of the gene.
Components:	The ORF clone is ion-exchange column purified and shipped in a 2D barcoded Matrix tube containing 10ug of transfection-ready, dried plasmid DNA (reconstitute with 100 ul of water).
Reconstitution Method:	<ol style="list-style-type: none">1. Centrifuge at 5,000xg for 5min.2. Carefully open the tube and add 100ul of sterile water to dissolve the DNA.3. Close the tube and incubate for 10 minutes at room temperature.4. Briefly vortex the tube and then do a quick spin (less than 5000xg) to concentrate the liquid at the bottom.5. Store the suspended plasmid at -20°C. The DNA is stable for at least one year from date of shipping when stored at -20°C.
RefSeq:	NM_019095.6
RefSeq Size:	1162 bp
RefSeq ORF:	906 bp
Locus ID:	54675
UniProt ID:	Q9UJA2
Cytogenetics:	20p12.3
Domains:	CDP-OH_P_transf
Protein Families:	Transmembrane
Protein Pathways:	Glycerophospholipid metabolism, Metabolic pathways
MW:	32.4 kDa
Gene Summary:	This gene encodes a member of the CDP-alcohol phosphatidyltransferase class-I family of proteins. The encoded enzyme catalyzes the synthesis of cardiolipin, a phospholipid component of mitochondrial membranes that is critical for mitochondrial function. [provided by RefSeq, Apr 2016]

Product images:



Circular map for RC213826



Western blot validation of overexpression lysate (Cat# [LY412754]) using anti-DDK antibody (Cat# [TA50011-100]). Left: Cell lysates from untransfected HEK293T cells; Right: Cell lysates from HEK293T cells transfected with RC213826 using transfection reagent MegaTran 2.0 (Cat# [TT210002]).