

## Product datasheet for **RC213824**

### CCNL2 (NM\_030937) Human Tagged ORF Clone

#### Product data:

Product Type:	Expression Plasmids
Product Name:	CCNL2 (NM_030937) Human Tagged ORF Clone
Tag:	Myc-DDK
Symbol:	CCNL2
Synonyms:	ANIA-6B; CCNM; CCNS; HCLA-ISO; HLA-ISO; PCEE; SB138
Mammalian Cell Selection:	Neomycin
Vector:	pCMV6-Entry (PS100001)
E. coli Selection:	Kanamycin (25 ug/mL)



[View online »](#)

**ORF Nucleotide Sequence:**

>RC213824 representing NM\_030937  
 Red=Cloning site Blue=ORF Green=Tags(s)

TTTTGTAATACGACTCACTATAGGGCGGCCGGAATTCGTCGACTGGATCCGGTACCGAGGAGATCTGCC  
 GCC**GCGATCGCC**

ATGGCGGGCGGGCGGGCGGGCTGGTGTGCAGGGTCGGCAGCTCCCGGGCAGCGGCCGGCGCCCGG  
 GATCTGGGGGCGACCCTCAGGGTCGCAGGGGGTGTGATCGGGGACAGGCTGTACTCCGGGTGCTCAT  
 CACCTTGAGAACTGCCTCCTGCCTGACGACAAGCTCCGTTTCACGCGCTCCATGTCGAGCGGCCTCGAC  
 ACCGACACAGAGACCGACCTCCGCGTGGTGGGCTGCGAGCTCATCCAGGCGGCCGGTATCCTGCTCCGCC  
 TGCCGACAGGTGGCCATGGCTACCGGCAGGTGTTGTTCCAGCGTTCTTTTATACCAAGTCTTCGTGAA  
 GCACTCCATGGAGCATGTGTCAATGGCCTGTGTCCACCTGGCTTCCAAGATAGAAGAGGCCCAAGACGC  
 ATACGGGACGTCATCAATGTGTTTACCAGCTTCGACAGCTGAGAGACAAAAGAAGCCCGTGCCTCTAC  
 TACTGGATCAAGATTATGTTAATTTAAAGAACCAATTATAAAGGCGAAAGACGAGTTCTCAAAGAGTT  
 GGGTTTCTGCGTCCATGTGAAGCATCCTCATAAGATAATCGTTATGTACCTTCAGGTGTTAGAGTGTGAG  
 CGTAACCAACACCTGGTCCAGACCTCATGGAATTACATGAACGACAGCCTTCGCACCGACGCTTCGTGTC  
 GGTCCAGCCAGAGAGCATCGCCTGTGCCTGCATTTATCTTGTGCCCGACGCTGGAGATCCCTTTGCC  
 CAATCGTCCCCATTGGTTTCTTTTGGTGGAGCAACTGAAGAAGAAATTCAGAAATCTGCTTAAAGATC  
 TTGACGCTTTATGCTCGGAAAAGGTTGATCTCACACCTGGAGGGTGAAGTGGAAAAAGAAAGCAGC  
 CTATCGAAGAGGCAAAGGCCCAAGCCCGGGGCTGTTGCCTGGGGCACACAGGTGCTGGATGGTACCTC  
 GGGGTTCTCTCCTGCCCAAGCTGGTGAATCCCCAAAGAAGTAAAGGGAGCAAGCCTTCCCCTG  
 TCTGTGAAGAACCAAGAGGAGGCTGGAGGGCGCAAGAAGCAAGGGGACAGCCCCGTGAACGGCT  
 TGCCAAAGGGGCGAGAGAGTCGGAGTCGGAGCCGGAGCCGTGAGCAGAGCTACTCGAGTCCCCATCCCG  
 ATCAGCGTCTCCTAAGAGGAGGAAAAGTGACAGCGGCTCCACATCTGGTGGGTCCAAGTCGACAGCCGC  
 TCCCGGAGCAGGAGTGACTCCCCACGAGACAGGCCCGCCCGCAGCGCTCCCTACAAGGCTCTGAGATTC  
 GGGGCTCCCGAAGTCCAAGGACTGCAAGTACCCCCAGAAGCCACACAAGTCTCGGAGCCGGAGTTCTTC  
 CCGTTCTCGAAGCAGGTACGGGAGCGGGCGGATAATCCGGGAAAATACAAGAAGAAAAGTCATTACTAC  
 AGAGATCAGCGACGAGAGCGCTCGAGGTCGTATGAACGCACAGGCCGTGCTATGAGCGGGACCACCCTG  
 GGCACAGCAGGCATCGGAGG

**ACGCGT**ACGCGGCCGCTCGAGCAGAACTCATCTCAGAAGAGGATCTGGCAGCAAATGATATCTGGATT  
 ACAAGGATGACGACGATAAGGTTTAA

**Protein Sequence:**

>RC213824 representing NM\_030937  
 Red=Cloning site Green=Tags(s)

MAAAAAAGAAGSAAPAAAAGAPGSGGAPSGSQVLIIGDRLYSGVLIITLENCLLPDDKLRFTPSMSSGLD  
 TDTETDLRVVGCLELIQAAGILLRPLQVAMATGQVLFQRFYTKSFVKHSMHVSMACVHLASKIEEAPRR  
 IRDVINVFHRLRQLRDKKPVPLLLDQDYVNLKNQIIKAERRVLKELGFCVHVKHPHKIIVMYLQVLECE  
 RNQHLVQTSWNYMNSLRTDVFVRFQPEIACACIYLAARTLEIPLPNRPHWLLFGATEEEIQEICKLI  
 LQLYARKKVDLTHLEGEVEKRKHAIEEAKAQARGLLPGGTQVLDGTSFGFSPAPKLVEPKEGKGSKPSPL  
 SVKNTKRRLEGAKKADSPVNLPGRESRSRSRSREQSRSRSPRSASPKRRKSDSGSTSGGSKSQR  
 SRSRSDSPPRQAPRSAPYKGEIRGSRKSKDCKYPQKPHKSRSSRSRSDSRRERADNPGKYKKKSHYY  
 RDQRRERSRSYERTGRRYERDHPGHSRHR

**TRTRPLEQKLI**SEEDLAANDILDYKDDDDKV

**Chromatograms:**

[https://cdn.origene.com/chromatograms/mk8029\\_h06.zip](https://cdn.origene.com/chromatograms/mk8029_h06.zip)

**Restriction Sites:**

Sgfl-Mlul

**Cloning Scheme:**


**ACCN:** NM\_030937

**ORF Size:** 1560 bp

**OTI Disclaimer:** The molecular sequence of this clone aligns with the gene accession number as a point of reference only. However, individual transcript sequences of the same gene can differ through naturally occurring variations (e.g. polymorphisms), each with its own valid existence. This clone is substantially in agreement with the reference, but a complete review of all prevailing variants is recommended prior to use. [More info](#)

**OTI Annotation:** This clone was engineered to express the complete ORF with an expression tag. Expression varies depending on the nature of the gene.

**Components:** The ORF clone is ion-exchange column purified and shipped in a 2D barcoded Matrix tube containing 10ug of transfection-ready, dried plasmid DNA (reconstitute with 100 ul of water).

- Reconstitution Method:**
1. Centrifuge at 5,000xg for 5min.
  2. Carefully open the tube and add 100ul of sterile water to dissolve the DNA.
  3. Close the tube and incubate for 10 minutes at room temperature.
  4. Briefly vortex the tube and then do a quick spin (less than 5000xg) to concentrate the liquid at the bottom.
  5. Store the suspended plasmid at -20°C. The DNA is stable for at least one year from date of shipping when stored at -20°C.

**RefSeq:** [NM\\_030937.6](#)

**RefSeq Size:** 3107 bp

**RefSeq ORF:** 1563 bp

**Locus ID:** 81669

**UniProt ID:** [Q96S94](#)

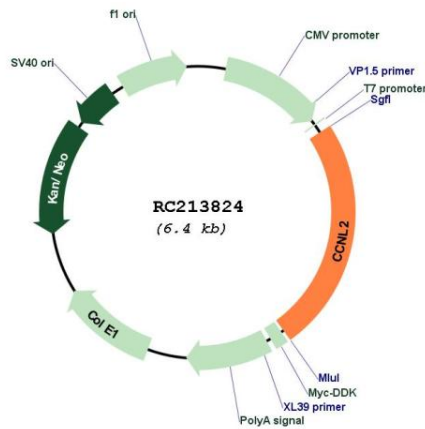
**Cytogenetics:** 1p36.33

**Protein Families:** Druggable Genome

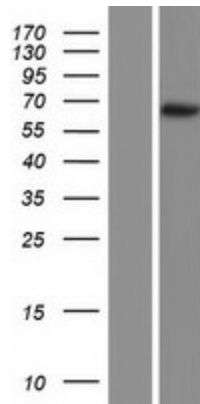
**MW:** 58 kDa

**Gene Summary:** The protein encoded by this gene belongs to the cyclin family. Through its interaction with several proteins, such as RNA polymerase II, splicing factors, and cyclin-dependent kinases, this protein functions as a regulator of the pre-mRNA splicing process, as well as in inducing apoptosis by modulating the expression of apoptotic and antiapoptotic proteins. Alternatively spliced transcript variants encoding different isoforms have been described for this gene. [provided by RefSeq, Aug 2011]

**Product images:**



Circular map for RC213824



Western blot validation of overexpression lysate (Cat# [LY410653]) using anti-DDK antibody (Cat# [TA50011-100]). Left: Cell lysates from untransfected HEK293T cells; Right: Cell lysates from HEK293T cells transfected with RC213824 using transfection reagent MegaTran 2.0 (Cat# [TT210002]).