

Product datasheet for RC213819

YIF1B (NM_001039673) Human Tagged ORF Clone

Product data:

Product Type:	Expression Plasmids
Product Name:	YIF1B (NM_001039673) Human Tagged ORF Clone
Tag:	Myc-DDK
Symbol:	YIF1B
Synonyms:	FinGER8
Mammalian Cell Selection:	Neomycin
Vector:	pCMV6-Entry (PS100001)
E. coli Selection:	Kanamycin (25 ug/mL)
ORF Nucleotide Sequence:	>RC213819 representing NM_001039673 Red=Cloning site Blue=ORF Green=Tags(s)

TTTTGTAATACGACTCACTATAGGGCGCCGGGAATTCGTCGACTGGATCCGGTACCGAGGAGATCTGCC
GCC**CGATCGCC**

ATGCAACCCGGCAGGCTTGGCGGGCGGCTGCGGGGACGCCCCGGCTGCCCTCGAAGCGGAGGATCCCTG
TGTCCCAGCCGGGCATGGCCGACCCCCACCAGCTTTTCGATGACACAAGTTCAGCCAGAGCCGGGGCTA
TGGGGCCAGCGGCACCTGGTGGCCTGAGTTATCCTGCAGCCTCTCCACGCCCCATGCAGCCTTCCTG
GCTGACCCGGTGTCCAACATGGCCATGGCCTATGGGAGCAGCCTGGCCGCGCAGGGCAAGGAGCTGGTGG
ATAAGAACATCGACCGCTTCATCCCATACCAAGCTCAAGTATTACTTTGCTGTGGACACCATGTATGT
GGGCAGAAAGCTGGCCCTGCTGTTCTTCCCTACCTACACCAGGACTGGGAAGTGCAGTACCAACAGGAC
ACCCCGGTGGCCCCCGCTTTGACGTCAATGCCCGGACCTCTACATTCCAGCAATGGCTTTCATCACCT
ACGTTTTGGTGGCTGGTCTTGGCTGGGGACCCAGGATAGGTTCTCCCCAGACCTCCTGGGGCTGCAAGC
GAGCTCAGCCCTGGCCTGGCTGACCCTGGAGGTGCTGGCCATCCTGCTCAGCCTCTATCTGGTCACTGTC
AACACCGACCTCACCACCATCGACCTGGTGGCCTTCTGGGCTACAAATATGTCGGGATGATTGGCGGGG
TCCTCATGGGCCGTGCTCTCGGGAAGATTGGCTACTACCTGGTGTGGCTGGTGTGCTGCGTAGCCATCTT
TGTGTTTATGATCCGGACGCTGCGGCTGAAGATCTTGGCAGACGACGAGCTGAGGGGGTCCCGGTGCGT
GGGGCCCGGAACCAGCTGCGCATGTACCTGACCATGGCGGTGGCGGGCGCAGCCTATGCTCATGTACT
GGCTCACCTTCCACCTGGTGCGG

ACGCGTACGCGGGCCGCTCGAGCAGAAACTCATCTCAGAAGAGGATCTGGCAGCAAATGATATCCTGGATT
ACAAGGATGACGACGATAAGGTTTAA



[View online »](#)

Protein Sequence: >RC213819 representing NM_001039673
Red=Cloning site Green=Tags(s)

MHPAGLAAAAAGTPRLPSKRRIIPVSQPGMADPHQLFDDTSSAQSRYGAQRAPGGLSYPAASPTPHAAFL
 ADPVSNMAMAYGSSSLAAQKELVDKNIDRFIPITKLKYFAVDTMVYGRKLGLLFFPYLHQDWEVQYQD
 TPVAPRFDVNAPDLYIPAMAFITYVLVAGLALGTQDRFSPDLLGLQASSALAWL TLEVLAILLSLYLVTV
 NTDLTTIDLVAFLGYKYVGMIGGVLMLLLFGKIGYLLVWGCCVAIFVMIRTLRLKILADAAAEGVPVR
 GARNQLRMYLTMAVAAAQPMLMYWLTFLVLR

TRTRPLEQKLISEEDLAANDILDYKDDDDKVK

Chromatograms: https://cdn.origene.com/chromatograms/mk8051_b05.zip

Restriction Sites: SgfI-MluI

Cloning Scheme:



ACCN: NM_001039673

ORF Size: 933 bp

OTI Disclaimer: The molecular sequence of this clone aligns with the gene accession number as a point of reference only. However, individual transcript sequences of the same gene can differ through naturally occurring variations (e.g. polymorphisms), each with its own valid existence. This clone is substantially in agreement with the reference, but a complete review of all prevailing variants is recommended prior to use. [More info](#)

OTI Annotation: This clone was engineered to express the complete ORF with an expression tag. Expression varies depending on the nature of the gene.

Components: The ORF clone is ion-exchange column purified and shipped in a 2D barcoded Matrix tube containing 10ug of transfection-ready, dried plasmid DNA (reconstitute with 100 ul of water).

Reconstitution Method:

1. Centrifuge at 5,000xg for 5min.
2. Carefully open the tube and add 100ul of sterile water to dissolve the DNA.
3. Close the tube and incubate for 10 minutes at room temperature.
4. Briefly vortex the tube and then do a quick spin (less than 5000xg) to concentrate the liquid at the bottom.
5. Store the suspended plasmid at -20°C. The DNA is stable for at least one year from date of shipping when stored at -20°C.

RefSeq: [NM_001039673.3](#)

RefSeq Size: 1233 bp

RefSeq ORF: 936 bp

Locus ID: 90522

UniProt ID: [Q5BJH7](#)

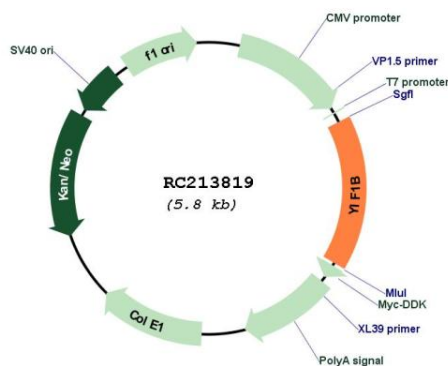
Cytogenetics: 19q13.2

Protein Families: Transmembrane

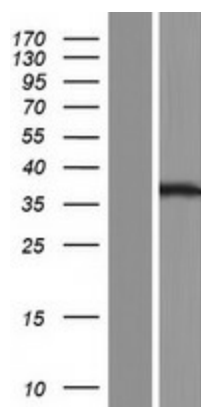
MW: 33.8 kDa

Gene Summary: Involved in the anterograde traffic pathway from the endoplasmic reticulum to the plasma membrane and the organization of the Golgi architecture (By similarity). Plays a key role in targeting to neuronal dendrites receptors such as HTR1A (By similarity).[UniProtKB/Swiss-Prot Function]

Product images:



Circular map for RC213819



Western blot validation of overexpression lysate (Cat# [LY422110]) using anti-DDK antibody (Cat# [TA50011-100]). Left: Cell lysates from untransfected HEK293T cells; Right: Cell lysates from HEK293T cells transfected with RC213819 using transfection reagent MegaTran 2.0 (Cat# [TT210002]).