

Product datasheet for RC213813

P2X5 (P2RX5) (NM_175080) Human Tagged ORF Clone

Product data:

Product Type:	Expression Plasmids
Product Name:	P2X5 (P2RX5) (NM_175080) Human Tagged ORF Clone
Tag:	Myc-DDK
Symbol:	P2X5
Synonyms:	LRH-1; P2X5; P2X5R
Mammalian Cell Selection:	Neomycin
Vector:	pCMV6-Entry (PS100001)
E. coli Selection:	Kanamycin (25 ug/mL)
ORF Nucleotide Sequence:	>RC213813 representing NM_175080 Red=Cloning site Blue=ORF Green=Tags(s)

TTTTGTAATACGACTCACTATAGGGCGGCCGGAATTCGTCGACTGGATCCGGTACCGAGGAGATCTGCC
GCC**CGGATCGCC**

ATGGGGCAGGCGGGCTGCAAGGGGCTCTGCCTGTCGCTGTTTCGACTACAAGACCGAGAAGTATGTCATCG
CCAAGAACAAGAAGGTGGGCCTGCTGTACCGGCTGCTGCAGGCCATCCATCCTGGCGTACCTGGTCGTATG
GGTGTTCCTGATAAAGAAGGGTTACCAAGACGTCGACACCTCCCTGCAGAGTGTGTCATACCAAAGTC
AAGGGCGTGGCCTTCACCAACACCTCGGATCTTGGCAGCGGATCTGGGATGTCGCCGACTACGTCATTC
CAGCCCAGAATGAAGCATTCTGATGGCGCTGCTCCAAGGACAGCGACTGCCACGCTGGGAAGCGGT
TACAGCTGGAAACGGAGTGAAGACCGGCCGCTGCCTGCGGAGAGAGAAGTGGCCAGGGGCACCTGTGAG
ATCTTTGCCTGGTGCCCGTTGGAGACAAGCTCCAGGCCGAGGAGCCATTCTGAAGGAGCCGAAGACT
TCACCATTTTTATAAAGAACCACATCCGTTTCCCCAAATCAACTTCTCCAACAATGTGATGGACGTCAA
GGACAGATCTTTCCTGAAATCATGCCACTTTGGCCCCAAGAACCCTACTGCCCATCTTCCGACTGGGC
TCCGTGATCCGCTGGGCCGGGAGCGACTCCAGGATATAGCCCTGGAGGGTGGCGTGATAGGAATTAATA
TTGAATGGAAGTGTGATCTTATAAAGCTGCCTCTGAGTGCCACCCTCACTATTCTTTAGCCGTCTGGA
CAATAAACTTTCAAAGTCTGTCTCCTCCGGGTACAACCTCAGATTTGCCAGATATTACCGAGACGCAGCC
GGGGTGGAGTCCGCACCCTGATGAAAGCCTACGGGATCCGTTTGACGTGATGGTGAACGGAAGGGTG
CTTCTTCTGCGACCTGGTACTCATCTACCTCATCAAAAAGAGAGATTTTACCGTGACAAGAAGTACGA
GGAAGTGAAGGGCCTAGAAGACAGTTCCAGGAGGCCGAGGACGAGGCATCGGGGCTGGGCTATCTGAG
CAGCTCACATCTGGGCCAGGGCTGCTGGGGATGCCGGAGCAGCAGGAGCTGCAGGAGCCACCCGAGGCGA
AGCGTGGAAGCAGCAGTCAGAAGGGGAACGGATCTGTGTGCCACAGCTCCTGGAGCCCCACAGGAGCAC
G

ACGCGTACGCGGCCGCTCGAGCAGAACTCATCTCAGAAGAGGATCTGGCAGCAAATGATATCTGGATT
ACAAGGATGACGACGATAAGGTTTAA



[View online >](#)

Protein Sequence: >RC213813 representing NM_175080
Red=Cloning site Green=Tags(s)

MGQAGCKGLCLSLFDYKTEKYVIAKNKKVGLLYRLLQASILAYLVVWVFLIKKGYQDVTSLQSAVITKV
 KGVAFNTNTSDLGQRIWDVADYVIPAQNEGIPDGACSKSDCHAGEAVTAGNGVKTGRCLRRENLARGTCE
 IFAWCPLETSSRPEEPFLKEAEDFTIFIKNHIRFPKFNFNNVMDVKDRSFLKSCHFQKPNHYCPIFRLG
 SVIRWAGSDFQDIALEGGVIGINIEWNCDLKAASECHPHYFSRLDNKLSKSVSSGYNFRFARYYRDA
 GVEFRTLKAYGIRFDVMVNGKGAFFCDLVLIYLIKREFYRDKKYEEVRGLEDSQEADEASGLGLSE
 QLTSGPGLLMPEQQELQEPPEAKRGSSSQKNGSVCPQLLEPHRST

TRTRPLEQKLISEEDLAANDILDYKDDDDKV

Chromatograms: https://cdn.origene.com/chromatograms/mk8057_b05.zip

Restriction Sites: SgfI-MluI

Cloning Scheme:



ACCN: NM_175080

ORF Size: 1191 bp

OTI Disclaimer: The molecular sequence of this clone aligns with the gene accession number as a point of reference only. However, individual transcript sequences of the same gene can differ through naturally occurring variations (e.g. polymorphisms), each with its own valid existence. This clone is substantially in agreement with the reference, but a complete review of all prevailing variants is recommended prior to use. [More info](#)

OTI Annotation: This clone was engineered to express the complete ORF with an expression tag. Expression varies depending on the nature of the gene.

Components: The ORF clone is ion-exchange column purified and shipped in a 2D barcoded Matrix tube containing 10ug of transfection-ready, dried plasmid DNA (reconstitute with 100 ul of water).

Reconstitution Method:

1. Centrifuge at 5,000xg for 5min.
2. Carefully open the tube and add 100ul of sterile water to dissolve the DNA.
3. Close the tube and incubate for 10 minutes at room temperature.
4. Briefly vortex the tube and then do a quick spin (less than 5000xg) to concentrate the liquid at the bottom.
5. Store the suspended plasmid at -20°C. The DNA is stable for at least one year from date of shipping when stored at -20°C.

RefSeq: [NM_175080.3](#)

RefSeq Size: 2150 bp

RefSeq ORF: 1194 bp

Locus ID: 5026

UniProt ID: [Q93086](#)

Cytogenetics: 17p13.2

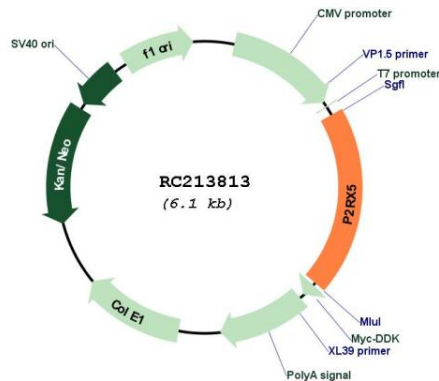
Protein Families: Druggable Genome, Ion Channels: ATP Receptors, Transmembrane

Protein Pathways: Calcium signaling pathway, Neuroactive ligand-receptor interaction

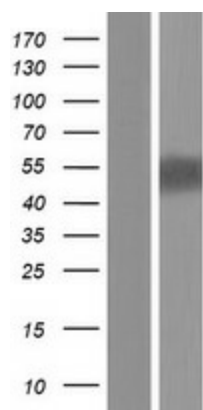
MW: 44.2 kDa

Gene Summary: The product of this gene belongs to the family of purinoceptors for ATP. This receptor functions as a ligand-gated ion channel. Alternative splicing results in multiple transcript variants. Read-through transcription also exists between this gene and the neighboring downstream gene, TAX1BP3 (Tax1 binding protein 3). [provided by RefSeq, Mar 2011]

Product images:



Circular map for RC213813



Western blot validation of overexpression lysate (Cat# [LY406316]) using anti-DDK antibody (Cat# [TA50011-100]). Left: Cell lysates from untransfected HEK293T cells; Right: Cell lysates from HEK293T cells transfected with RC213813 using transfection reagent MegaTran 2.0 (Cat# [TT210002]).