

Product datasheet for **RC213811**

Paxillin (PXN) (NM_002859) Human Tagged ORF Clone

Product data:

Product Type:	Expression Plasmids
Product Name:	Paxillin (PXN) (NM_002859) Human Tagged ORF Clone
Tag:	Myc-DDK
Symbol:	PXN
Mammalian Cell Selection:	Neomycin
Vector:	pCMV6-Entry (PS100001)
E. coli Selection:	Kanamycin (25 ug/mL)



[View online »](#)

ORF Nucleotide Sequence:

>RC213811 representing NM_002859
 Red=Cloning site Blue=ORF Green=Tags(s)

TTTTGTAATACGACTCACTATAGGGCGGCCGGAATTCGTCGACTGGATCCGGTACCGAGGAGATCTGCC
 GCC**GCGATCGCC**

ATGGACGACCTCGACGCCCTGCTGGCGGACTTGGAGTCTACCACCTCCCACATCTCCAAACGGCCTGTGT
 TCTTGTGCGGAGGAGACCCCTACTCATACCCAACCTGAAACCACACATACCAGGAGATTGCCGTGCCACC
 CCCCCTCCCCCACCCTCCAGCGAGGCCCTCAATGGCACAATCCTTGACCCCTTAGACCAGTGGCAG
 CCCAGCGGCTCCCGATTATCCACCAGCAGCCTCAGTCTCATCACCTGTGTACGGCTCCAGTGCCAAAA
 CTTCCAGTGTCTCAACCCTCAGGACAGTGTGGCTCTCCGTGCTCCCGAGTGGGTGAGGAGGAGCAGT
 CTACAGCTTCCCAACAAGCAGAAATCAGCTGAGCCTTCAACCACCGTAATGAGCACGTCCCTGGCAGC
 AACCTTTCTGAACCTGACCGCCTGCTGCTGGAACCTGACGCTGTACAGCATAACCCGCCAGGCTTCCCTG
 CAGATGAGGCCAACTCAAGCCCCCGCTTCTGGGGCCCTGAGCCCCCTCTATGGTGTCCAGAGACTAA
 CAGCCCCCTGGGAGGCAAAGCTGGGCCCTGACGAAAGAGAAGCCTAAGCGGAATGGGGCCGGGCGCTG
 GAGGACGTGCGGCCAGTGTGGAGAGTCTTGGATGAACTGGAGAGCTCCGTGCCAGCCCGTCCCTG
 CCATCACTGTGAACCAGGGCGAGATGAGCAGCCCGCAGCGGTACCTCCACCAACAGCAGACACGCAT
 CTCGGCCTCCTCTGCCACCAGGGAGCTGGACGAGCTGATGGCTTCGCTGTGCGATTTCAAGTTTCATGGCC
 CAGGGGAAGACAGGGAGCAGCTACCCCTGGGGGCCCCGAAGCCCGGGAGCCAGCTGGACAGCATGC
 TGGGGAGCCTGCAGTCTGACCTGAACAAGCTGGGGTCCGACAGTCGCCAAAGGAGTCTGCGGGCCCTG
 CAAGAAGCCATCGCCGGCAGGTTGTGACCGCATGGGAAGACGTGCCACCCGAGCACTTCGTCTGC
 ACCCACTGCCAGGAGGATCGGATCCCGAAGCTTCTCGAGCGGATGGACAGCCCTACTGTGAAAAGG
 ACTACCACAACCTTTCTCCCGCGCTGCTACTGCAACGGCCCCATCCTGGATAAAGTGGTGACAGC
 CCTTGACCGGACGTGGCACCTGAACACTTCTTCTGTGCACAGTGTGGAGCCTTCTTGGTCCCGAAGGG
 TTCCACGAGAAGGACGGCAAGGCCTACTGTGCAAGGACTACTTCGACATGTTGCGACCCAAGTGTGGCG
 GCTGCGCCCGGGCCATCCTGGAGAACTATATCTCAGCCCTCAACACGCTGTGGCATCCTGAGTGTCTTGT
 GTGCCGGGAATGCTTACGCCATTCGTGAACGGCAGCTTCTTCGAGCAGCAGGGCAGCCCTACTGTGAG
 GTGCACTACCACGAGCGGCGGGCTCGTGTGTTCTGGCTGCCAGAAGCCATCACCGGCCGCTGCATCA
 CCGCCATGGCCAAGAAGTCCACCCGAGCACTTCGTCTGTGCCCTTCTGCCTCAAGCAGCTCAACAAGGG
 CACCTTCAAGGAGCAGAACGACAAGCCTTACTGTCAGAAGTCTTCTCAAGCTTCTCTGC

ACGCGTACGCGGCCGCTCGAGCAGAAACTCATCTCAGAAGAGGATCTGGCAGCAAATGATATCCTGGATT
 ACAAGGATGACGACGATAAGGTTTAA

Protein Sequence:

>RC213811 representing NM_002859
 Red=Cloning site Green=Tags(s)

MDDL DALLADLESTTSHISKRPVFLSEETPYSYPTGNHTYQEIAVPPPVPVPPPSSEALNGTILDPLDQWQ
 PSGSRFIHQPPQSSSPVYGSSAKTSSVSNPQDSVGSPPSRVGEHVVYFQKQKSAEPSPTVMSTSLGS
 NLSELDRLLELNAVQHNPPGFPADANSSPPLPGALSPLYGVPEVNSPLGGKAGPLTKEKPKRNGRGL
 EDVRPVSLESLLELESSVPVPAITVNQEMSSPQRVTSTQQQTRISASSATRELDLMASLSDFKFMA
 QGKTGSSSPPGGPPKPGSQLDSMLGSLQSDLNKLGVATVAKGVCGACKKPIAGQVVTAMGKTWHPEHFVC
 THCQEEIGSRNFFERDGPYCEKDYHNLFSRCCYCNPIIDKVVVALDRTWHPEHFFCAQCGAFFGPEG
 FHEKDGKAYCRKDYDFMFAKCGGCARAIENYISALNLTWHPECFVCRECFPFVNGSFFEHDGQPYCE
 VHYHERRGSLCSGCQKPIITGRGITAMAKKFHPEHFVCAFCLKQLNKGTFFKEQNDKPYCQNCFLKLC

TRTRPLEQKLISEEDLAANDILDYKDDDDKV

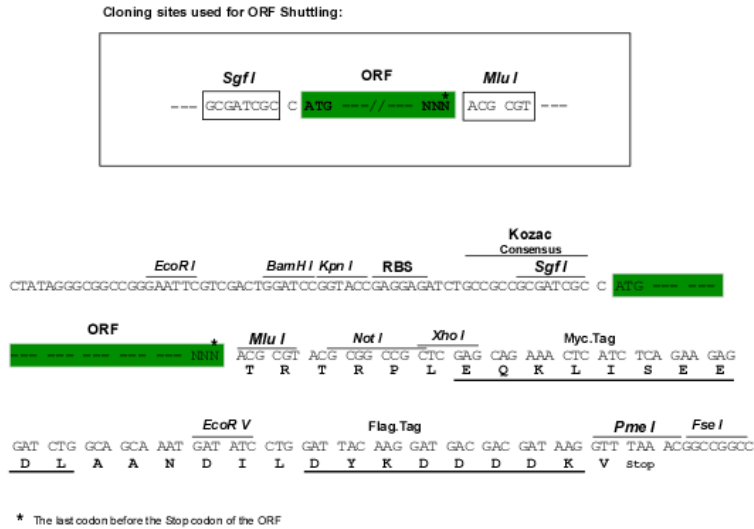
Chromatograms:

https://cdn.origene.com/chromatograms/mk6158_h07.zip

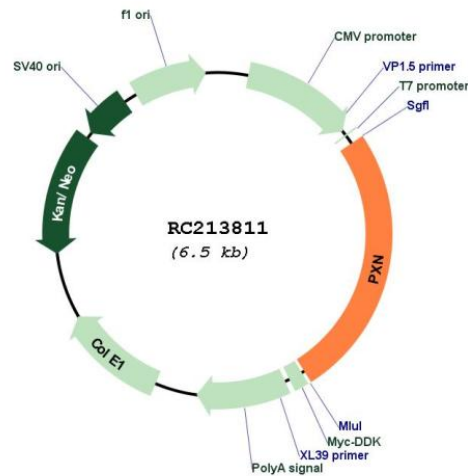
Restriction Sites:

Sgfl-Mlul

Cloning Scheme:



Plasmid Map:



ACCN:

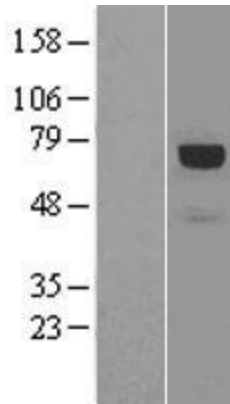
NM_002859

ORF Size:	1671 bp
OTI Disclaimer:	<p>Due to the inherent nature of this plasmid, standard methods to replicate additional amounts of DNA in E. coli are highly likely to result in mutations and/or rearrangements. Therefore, OriGene does not guarantee the capability to replicate this plasmid DNA. Additional amounts of DNA can be purchased from OriGene with batch-specific, full-sequence verification at a reduced cost. Please contact our customer care team at custsupport@origene.com or by calling 301.340.3188 option 3 for pricing and delivery.</p> <p>The molecular sequence of this clone aligns with the gene accession number as a point of reference only. However, individual transcript sequences of the same gene can differ through naturally occurring variations (e.g. polymorphisms), each with its own valid existence. This clone is substantially in agreement with the reference, but a complete review of all prevailing variants is recommended prior to use. More info</p>
OTI Annotation:	This clone was engineered to express the complete ORF with an expression tag. Expression varies depending on the nature of the gene.
Components:	The ORF clone is ion-exchange column purified and shipped in a 2D barcoded Matrix tube containing 10ug of transfection-ready, dried plasmid DNA (reconstitute with 100 ul of water).
Reconstitution Method:	<ol style="list-style-type: none">1. Centrifuge at 5,000xg for 5min.2. Carefully open the tube and add 100ul of sterile water to dissolve the DNA.3. Close the tube and incubate for 10 minutes at room temperature.4. Briefly vortex the tube and then do a quick spin (less than 5000xg) to concentrate the liquid at the bottom.5. Store the suspended plasmid at -20°C. The DNA is stable for at least one year from date of shipping when stored at -20°C.
RefSeq:	NM_002859.1 , NP_002850.1
RefSeq Size:	3595 bp
RefSeq ORF:	1674 bp
Locus ID:	5829
UniProt ID:	P49023
Cytogenetics:	12q24.23
Domains:	LIM, Paxillin
Protein Families:	Druggable Genome, Stem cell - Pluripotency
Protein Pathways:	Chemokine signaling pathway, Focal adhesion, Leukocyte transendothelial migration, Regulation of actin cytoskeleton, VEGF signaling pathway
MW:	60.8 kDa

Gene Summary:

This gene encodes a cytoskeletal protein involved in actin-membrane attachment at sites of cell adhesion to the extracellular matrix (focal adhesion). Alternatively spliced transcript variants encoding different isoforms have been described for this gene. These isoforms exhibit different expression pattern, and have different biochemical, as well as physiological properties (PMID:9054445). [provided by RefSeq, Aug 2011]

Product images:



Western blot validation of overexpression lysate (Cat# [LY401010]) using anti-DDK antibody (Cat# [TA50011-100]). Left: Cell lysates from untransfected HEK293T cells; Right: Cell lysates from HEK293T cells transfected with RC213811 using transfection reagent MegaTran 2.0 (Cat# [TT210002]).



Coomassie blue staining of purified PXN protein (Cat# [TP313811]). The protein was produced from HEK293T cells transfected with PXN cDNA clone (Cat# RC213811) using MegaTran 2.0 (Cat# [TT210002]).