

## Product datasheet for **RC213805**

### OR56A3 (NM\_001003443) Human Tagged ORF Clone

#### Product data:

**Product Type:** Expression Plasmids  
**Product Name:** OR56A3 (NM\_001003443) Human Tagged ORF Clone  
**Tag:** Myc-DDK  
**Symbol:** OR56A3  
**Synonyms:** OR56A2P; OR56A3P; OR56A6  
**Mammalian Cell Selection:** Neomycin  
**Vector:** pCMV6-Entry (PS100001)  
**E. coli Selection:** Kanamycin (25 ug/mL)  
**ORF Nucleotide Sequence:** >RC213805 representing NM\_001003443  
**Red=Cloning site Blue=ORF Green=Tags(s)**

TTTTGTAATACGACTCACTATAGGGCGGCCGGAATTCGTCGACTGGATCCGGTACCGAGGAGATCTGCC  
GCC**CGATCGCC**

ATGACAACACACCGAAATGACACCCTCTCCACTGAAGCTTCAGACTTCCTCTTGAATTGTTTTGTCAGAT  
CCCCAGCTGGCAGCACTGGCTGTCCCTGCCCTCAGCCTCCTTTCTCTTGGCCGTAGGGGCCAACAC  
CACCTCCTGATGACCATCTGGCTGGAGGCCTCTCTGCACCAGCCCTGTACTACCTGCTCAGCCTCCTC  
TCCCTGCTGGACATCGTCTCTGCCTCACTGTCATCCCCAAGGTCCTGACCATCTTCTGGTTTGACCTCA  
GGCCCATCAGCTTCCCTGCCTGCTTCCCTCCAGATGTACATCATGAATTGTTTCTAGCCATGGAGTCTTG  
CACATTCATGGTCATGGCCTATGATCGTTATGTAGCCATCTGCCACCACTGAGATATCCATCAATCATC  
ACTGATCACTTTGTAGTCAAGGCTGCCATGTTTATTTGACCAGAAATGTGCTTATGACTCTGCCATCC  
CCATCCTTTCAGCACAACCTCCGTTATTGTGGAAGAAATGTCATTGAGAAGTGCATCTGTGCCAATATGTC  
TGTTTCCAGACTCTCTGCGATGATGTCACCATCAATCACCTTACCAATTTGCTGGAGGCTGGACTCTG  
CTAGGATCTGACCTATCCTTATCTTCTCTACACCTTATTCTGCGAGCTGTGCTGAGACTCAAGG  
CAGAGGGTGGCGTGGCAAAGGCCCTAAGCACATGTGGCTCCCACTTATGCTCATCTCTTCTTCCAGCAC  
CATCCTTCTGGTTTTTGTCTCACACATGTGGCTAAGAAGAAAGTCTCCCTGATGTGCCAGTCTTGCTC  
AATGTTCTCCACCATGTCATTCTGCAGCCCTTAACCCCATATTACGGGGTGAGAACCAAGAAATTA  
AGCAGGGAATGCAGAGGTTGTTGAAGAAAGGGTGC

**ACGCGT**ACGCGGCCGCTCGAGCAGAAACTCATCTCAGAAGAGGATCTGGCAGCAATGATATCCTGGATT  
ACAAGGATGACGACGATAAGGTTTAA



[View online »](#)

**Protein Sequence:** >RC213805 representing NM\_001003443  
Red=Cloning site Green=Tags(s)

MTTHRNDTLSTEASDFLLNCFVRSPSWQHWSLPLSLLFLLAVGANTLLMTIWLEASLHQPLYLLSLL  
 SLLDIVLCLTVIPKVLTIWFDLRPIISFPACFLQMYIMNCFLAMESCTFMVMAYDRYVAICHPLRYSII  
 TDHFVVKAAAMFILTRNVLMTLPIPILSAQLRYCGRNVIENCICANMSVSRLSCDDVTINHLYQFAGGWTL  
 LGSDLILIFLSYTFILRAVLRKAEAVAKALSTCGSHFMLILFFSTILLVFVLTHVAKKKVSPDVPVLL  
 NVLHHVIPAALNPYYGVRTQEIKQGMQRLLKKGC

TRTRPLEQKLISEEDLAANDILDYKDDDDKV

**Chromatograms:** [https://cdn.origene.com/chromatograms/mk8001\\_f11.zip](https://cdn.origene.com/chromatograms/mk8001_f11.zip)

**Restriction Sites:** SgfI-MluI

**Cloning Scheme:**



**ACCN:** NM\_001003443

**ORF Size:** 945 bp

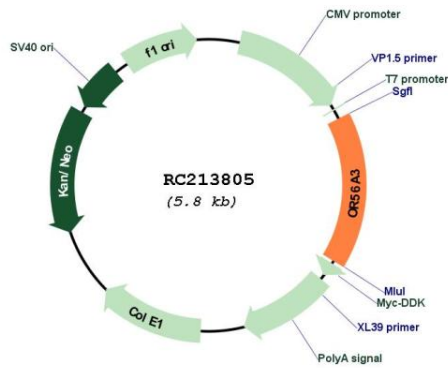
**OTI Disclaimer:** The molecular sequence of this clone aligns with the gene accession number as a point of reference only. However, individual transcript sequences of the same gene can differ through naturally occurring variations (e.g. polymorphisms), each with its own valid existence. This clone is substantially in agreement with the reference, but a complete review of all prevailing variants is recommended prior to use. [More info](#)

**OTI Annotation:** This clone was engineered to express the complete ORF with an expression tag. Expression varies depending on the nature of the gene.

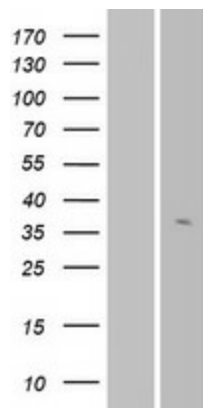
**Components:** The ORF clone is ion-exchange column purified and shipped in a 2D barcoded Matrix tube containing 10ug of transfection-ready, dried plasmid DNA (reconstitute with 100 ul of water).

<b>Reconstitution Method:</b>	<ol style="list-style-type: none"><li>1. Centrifuge at 5,000xg for 5min.</li><li>2. Carefully open the tube and add 100ul of sterile water to dissolve the DNA.</li><li>3. Close the tube and incubate for 10 minutes at room temperature.</li><li>4. Briefly vortex the tube and then do a quick spin (less than 5000xg) to concentrate the liquid at the bottom.</li><li>5. Store the suspended plasmid at -20°C. The DNA is stable for at least one year from date of shipping when stored at -20°C.</li></ol>
<b>RefSeq:</b>	<u>NM_001003443.2</u> , <u>NP_001003443.2</u>
<b>RefSeq Size:</b>	948 bp
<b>RefSeq ORF:</b>	948 bp
<b>Locus ID:</b>	390083
<b>UniProt ID:</b>	<u>Q8NH54</u>
<b>Cytogenetics:</b>	11p15.4
<b>Protein Families:</b>	Transmembrane
<b>Protein Pathways:</b>	Olfactory transduction
<b>MW:</b>	35.4 kDa
<b>Gene Summary:</b>	Olfactory receptors interact with odorant molecules in the nose, to initiate a neuronal response that triggers the perception of a smell. The olfactory receptor proteins are members of a large family of G-protein-coupled receptors (GPCR) arising from single coding-exon genes. Olfactory receptors share a 7-transmembrane domain structure with many neurotransmitter and hormone receptors and are responsible for the recognition and G protein-mediated transduction of odorant signals. The olfactory receptor gene family is the largest in the genome. The nomenclature assigned to the olfactory receptor genes and proteins for this organism is independent of other organisms. [provided by RefSeq, Jul 2008]

Product images:



Circular map for RC213805



Western blot validation of overexpression lysate (Cat# [LY424129]) using anti-DDK antibody (Cat# [TA50011-100]). Left: Cell lysates from untransfected HEK293T cells; Right: Cell lysates from HEK293T cells transfected with RC213805 using transfection reagent MegaTran 2.0 (Cat# [TT210002]).