

Product datasheet for **RC213803**

CCDC102B (NM_001093729) Human Tagged ORF Clone

Product data:

Product Type:	Expression Plasmids
Product Name:	CCDC102B (NM_001093729) Human Tagged ORF Clone
Tag:	Myc-DDK
Symbol:	CCDC102B
Synonyms:	ACY1L; AN; C18orf14; HsT1731
Mammalian Cell Selection:	Neomycin
Vector:	pCMV6-Entry (PS100001)
E. coli Selection:	Kanamycin (25 ug/mL)



[View online »](#)

ORF Nucleotide Sequence:

>RC213803 representing NM_001093729
 Red=Cloning site Blue=ORF Green=Tags(s)

TTTTGTAATACGACTCACTATAGGGCGGCCGGAATTCGTCGACTGGATCCGGTACCGAGGAGATCTGCC
 GCC**CGCATCGCC**

ATGAATTTAGATTCCATACATCGATTAATTGAGGAAACACAGATCTTCCAGATGCAACAATCATCAATTA
 AGTCACGCGCGACATGGTGGCCCTGCCTCACCCCCAGGGATACCTGTAATACCTGTTCCCACTTCA
 TGGGCTACAATCTCATGTGCTCACAATTTCTGTGCTCACTCATATAACCAACAATGGGATATTGT
 GAAGAAGTTCGCCTGCGGGAGCTTGAAGAAGTCAAGGCCAGAGCTGCTCAGATGGAAAAGACCATGCGGT
 GGTGGTGGACTGCACTGCCAACTGGAGAGAAAAATGGAGTAAAGTTCGAGCTGAAAGGAACAGTCCAG
 GGAGGAAGGAAGACAACCTAGAATAAACTAGAGATGGCGATGAAAGAATTGAGTACACTGAAAAAGAAA
 CAGAGTTTCCACCTCAGAAGGAGGCATTAGAAGCTAATGTTACCCAGGATCTGAAGCTTCTGGCTTCG
 TAGAAGAATCCTGTGAACATACAGACCAATTTCAATTGAGTTCACAAATGCATGAGTCTATCAGAGAGTA
 TTTGGTAAAAAGACAATTTTCTACAAGGAGGACACAAATAATAAGGAACAAGGTGTGGTTATTGATTCT
 CTAATAATTAAGTGAAGGAGATGAAGCCCAATCTAGATGGTGTGATTTATTCAACAATGGTGGTTCTGGAA
 ACGGTGAAACGAAAAGTGGGCTGAGACTGAAAGCAATAAATCTGCCTTTGGAAAATGAAGTAACTGAAAT
 TTCAGCTTTGCAGGTGCATTTGGATGAATTCAAAAATCTTATGGAAGGAAAGAGAAATGCGCACAGCT
 TTGAAAAAGAAAATAGAGAGACTGGAGTCGGCTTTGTCTCTGTGGAAGTGGAAAGTATGAAGAAGTAAAG
 AATCAAAGCCAAAAATGTGAAAGAGTTTGACATTTCTTCTGGTCAACATAATGATGAAATGCAAGAACT
 GTCAGGCAATATAAGGAAGAATCCAAATCTCAAACAGCAAAGACAGAGTGATTTGTGAGTTAAGAGCA
 GAGCTAGAGAGATTGCAAGCTGAAAATACCTCGGAGTGGGACAAGAGGAAAATACTTGAAGAGAAAAAGC
 AGGGACTGGAGAGAAAAATAGAAGGCTGAAGATCCAGGTGAAAGAAAATGGAAGAGCTTTTGGATAAGAA
 AAATAGATTAAGTGCAAACTCTCAAAGTCTGATTTCAAGATGTCACAAATGATCTGCAAGAAAAAAC
 CAGGAATTACTGAACCTTCAACATGCCTACTATAAACTAAACAGACAATACCAGGCAAATATTGCAGAAC
 TGACTCATGCAACAACCGAGTGGATCAAAATGAAGCAGAAGTAAAGAACTAAGATTACGAGTGGAAAG
 ACTAAAGCAGGGACTCAATCAAAAAGAAGATGAGCTTGATGATTCCTGAATCAGATCCGTAAGCTCCAG
 AGGTCTCTGGATGAAGAGAAAGAAAGAAATGAAAAGTCTAGAGACTGAACTCAGGCACTTGCAAAAGTGG

ACGCGTACGCGGCCGCTCGAGCAGAACTCATCTCAGAAGAGGATCTGGCAGCAAATGATATCTGGATT
 ACAAGGATGACGACGATAAGGTTTAA

Protein Sequence:

>RC213803 representing NM_001093729
 Red=Cloning site Green=Tags(s)

MNLDSIHRLIEETQIFQMQQSSIKSRGDMVAPASPPRDTNCTCFPLHGLQSHAAHNFCAHSYNTNKWDIC
 EELRLRELEEVKARAAQMEKTRWWSDCANWREKWSKVAERNSAREEGRQLRIKLEMAMKELSTLKKK
 QSLPPQKEALEANVTQDLKLPGFVEESCEHTDQFQLSSQMHEISIREYLVKRQFSTKEDTNNKEQGVVIDS
 LKLSEEMKPNLDGVDLFNNGGSGNGETKTGLRLKAINLPLENEVTEISALQVHLDEFQKILWKEREMRTA
 LEKEIERLESALSLWKWYEELKESKPKNVKEFDILLGQHNDQMELSGNIKEESKSNQSKDRVICELRA
 ELERLQAENTSEWDKREILEREKQGLERENRRLKIQVKEMEELLDKKNRLSANSQSPDFKMSQIDLQEK
 QELNLQHAYYKLNRYQANIAELTHANNRVDQNEAEVKKLRLRVEELKQGLNQKEDELDDSLNQIRKLQ
 RSLDEEKERNENLETLRHLQNW

TRTRPLEQKLISEEDLAANDILDYKDDDDKV

Chromatograms:

https://cdn.origene.com/chromatograms/mk8029_h12.zip

Restriction Sites:

SgfI-MluI

Cloning Scheme:


ACCN: NM_001093729

ORF Size: 1539 bp

OTI Disclaimer: Due to the inherent nature of this plasmid, standard methods to replicate additional amounts of DNA in E. coli are highly likely to result in mutations and/or rearrangements. Therefore, OriGene does not guarantee the capability to replicate this plasmid DNA. Additional amounts of DNA can be purchased from OriGene with batch-specific, full-sequence verification at a reduced cost. Please contact our customer care team at custsupport@origene.com or by calling 301.340.3188 option 3 for pricing and delivery.

The molecular sequence of this clone aligns with the gene accession number as a point of reference only. However, individual transcript sequences of the same gene can differ through naturally occurring variations (e.g. polymorphisms), each with its own valid existence. This clone is substantially in agreement with the reference, but a complete review of all prevailing variants is recommended prior to use. [More info](#)

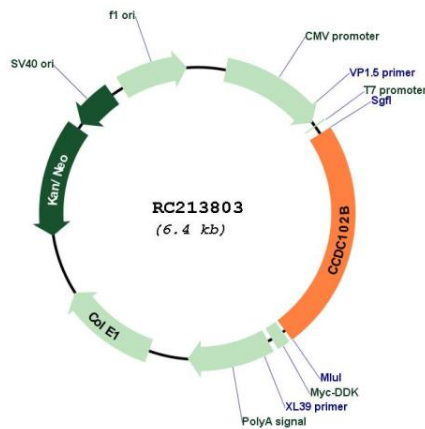
OTI Annotation: This clone was engineered to express the complete ORF with an expression tag. Expression varies depending on the nature of the gene.

Components: The ORF clone is ion-exchange column purified and shipped in a 2D barcoded Matrix tube containing 10ug of transfection-ready, dried plasmid DNA (reconstitute with 100 ul of water).

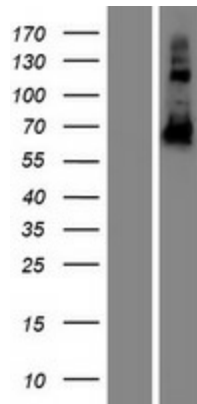
- Reconstitution Method:**
1. Centrifuge at 5,000xg for 5min.
 2. Carefully open the tube and add 100ul of sterile water to dissolve the DNA.
 3. Close the tube and incubate for 10 minutes at room temperature.
 4. Briefly vortex the tube and then do a quick spin (less than 5000xg) to concentrate the liquid at the bottom.
 5. Store the suspended plasmid at -20°C. The DNA is stable for at least one year from date of shipping when stored at -20°C.

RefSeq: [NM_001093729.1](#), [NP_001087198.1](#)
 RefSeq Size: 2828 bp
 RefSeq ORF: 1542 bp
 Locus ID: 79839
 UniProt ID: [Q68D86](#)
 Cytogenetics: 18q22.1-q22.2
 MW: 60.3 kDa

Product images:



Circular map for RC213803



Western blot validation of overexpression lysate (Cat# [LY420683]) using anti-DDK antibody (Cat# [TA50011-100]). Left: Cell lysates from untransfected HEK293T cells; Right: Cell lysates from HEK293T cells transfected with RC213803 using transfection reagent MegaTran 2.0 (Cat# [TT210002]).