

## Product datasheet for **RC213794L1V**

### CLEC2D (NM\_013269) Human Tagged ORF Clone Lentiviral Particle

#### Product data:

Product Type:	Lentiviral Particles
Product Name:	CLEC2D (NM_013269) Human Tagged ORF Clone Lentiviral Particle
Symbol:	CLEC2D
Synonyms:	CLAX; LLT1; OCIL
Mammalian Cell Selection:	None
Vector:	pLenti-C-Myc-DDK (PS100064)
Tag:	Myc-DDK
ACCN:	NM_013269
ORF Size:	573 bp
ORF Nucleotide Sequence:	The ORF insert of this clone is exactly the same as(RC213794).
OTI Disclaimer:	The molecular sequence of this clone aligns with the gene accession number as a point of reference only. However, individual transcript sequences of the same gene can differ through naturally occurring variations (e.g. polymorphisms), each with its own valid existence. This clone is substantially in agreement with the reference, but a complete review of all prevailing variants is recommended prior to use. <a href="#">More info</a>
OTI Annotation:	This clone was engineered to express the complete ORF with an expression tag. Expression varies depending on the nature of the gene.
RefSeq:	<a href="#">NM_013269.2</a>
RefSeq Size:	1739 bp
RefSeq ORF:	576 bp
Locus ID:	29121
UniProt ID:	<a href="#">Q9UHP7</a>
Cytogenetics:	12p13.31
Domains:	CLECT
Protein Families:	Druggable Genome, Transmembrane

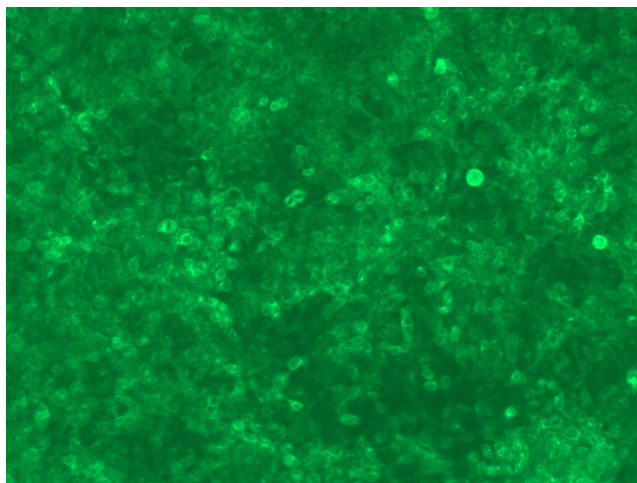


[View online »](#)

MW: 21.7 kDa

**Gene Summary:** This gene encodes a member of the natural killer cell receptor C-type lectin family. The encoded protein inhibits osteoclast formation and contains a transmembrane domain near the N-terminus as well as the C-type lectin-like extracellular domain. Several alternatively spliced transcript variants have been identified for this gene. [provided by RefSeq, Oct 2010]

**Product images:**



[RC213794L1] was used to prepare Lentiviral particles using [TR30037] packaging kit. HEK293T cells were transduced with RC213794L1V particle to overexpress human CLEC2D-Myc-DDK fusion protein.