

Product datasheet for RC213794

CLEC2D (NM_013269) Human Tagged ORF Clone

Product data:

Product Type: Expression Plasmids
Product Name: CLEC2D (NM_013269) Human Tagged ORF Clone
Tag: Myc-DDK
Symbol: CLEC2D
Synonyms: CLAX; LLT1; OCIL
Mammalian Cell Selection: Neomycin
Vector: pCMV6-Entry (PS100001)
E. coli Selection: Kanamycin (25 ug/mL)
ORF Nucleotide Sequence: >RC213794 representing NM_013269
 Red=Cloning site Blue=ORF Green=Tags(s)

TTTTGTAATACGACTCACTATAGGGCGGCCGGAATTCGTCGACTGGATCCGGTACCGAGGAGATCTGCC
 GCC**CGATCGCC**

ATGCATGACAGTAACAATGTGGAGAAAGACATTACACCATCTGAATTGCCTGCAAACCCAGGTTGTCTGC
 ATTCAAAAGAGCATTCTATTAAGCTACCTAATTTGGCGCTTATTTTCTTAATCATGTTTCTGACAAT
 CATAGTGTGTGGAATGGTTGCTGCTTAAGCGCAATAAGAGCTAACTGCCATCAAGGCCATCAGTATGT
 CTTCAAGCTGCATGCCAGAAAGCTGGATTGGTTTTCAAAGAAAGTGTCTATTTTCTGATGACACCA
 AGAACTGGACATCAAGTCAGAGTTTTGTGACTACAAGATGCTGATCTTGCTCAGGTTGAAAGCTCCA
 GGAAGTGAATTTCTGTTGAGATATAAAGGCCATCTGATCACTGGATTGGGCTGAGCAGAGAACAAGGC
 CAACCATGGAAATGGATAAATGGTACTGAATGGACAAGACAGTTTCTATCCTGGGAGCAGGAGAGTGTG
 CCTATTTGAATGACAAAGGTGCCAGTAGTGCCAGGCACTACACAGAGAGGAAGTGGATTTGTTCAAATC
 AGATATACATGTC

ACGCGTACGCGGCCGCTCGAGCAGAACTCATCTCAGAAGAGGATCTGGCAGCAAATGATATCCTGGATT
 ACAAGGATGACGACGATAAGGTTTAA

Protein Sequence: >RC213794 representing NM_013269
 Red=Cloning site Green=Tags(s)

MHDSNNVEKDITPSEL PANPGCLHSKEHSIKATLIWRLFFLIMFLTIIVCGMVAALS AIRANCHQEPSVC
 LQAACPESWIGFQRKCFYFSDDTKNWTSSQRFCDSDADLAQVESFQELNFLRYKGPSDHWIGLSREQG
 QPWKWIWTEWTRQFPILGAGECAYLNDKGASSARHYTERKWKWICKSDIHV

TRTRPLEQKLISEEDLAANDILDYKDDDDKV



[View online »](#)

Chromatograms: https://cdn.origene.com/chromatograms/ja1696_e04.zip

Restriction Sites: SgfI-MluI

Cloning Scheme:



ACCN: NM_013269

ORF Size: 573 bp

OTI Disclaimer: The molecular sequence of this clone aligns with the gene accession number as a point of reference only. However, individual transcript sequences of the same gene can differ through naturally occurring variations (e.g. polymorphisms), each with its own valid existence. This clone is substantially in agreement with the reference, but a complete review of all prevailing variants is recommended prior to use. [More info](#)

OTI Annotation: This clone was engineered to express the complete ORF with an expression tag. Expression varies depending on the nature of the gene.

Components: The ORF clone is ion-exchange column purified and shipped in a 2D barcoded Matrix tube containing 10ug of transfection-ready, dried plasmid DNA (reconstitute with 100 ul of water).

Reconstitution Method:

1. Centrifuge at 5,000xg for 5min.
2. Carefully open the tube and add 100ul of sterile water to dissolve the DNA.
3. Close the tube and incubate for 10 minutes at room temperature.
4. Briefly vortex the tube and then do a quick spin (less than 5000xg) to concentrate the liquid at the bottom.
5. Store the suspended plasmid at -20°C. The DNA is stable for at least one year from date of shipping when stored at -20°C.

RefSeq: [NM_013269.6](#)

RefSeq Size: 1739 bp

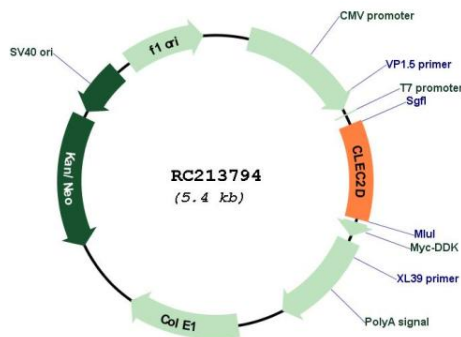
RefSeq ORF: 576 bp

Locus ID: 29121

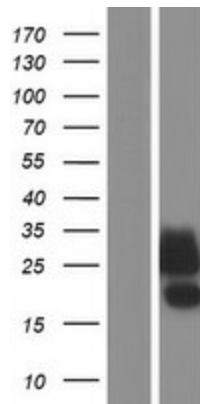
UniProt ID: [Q9UHP7](#)
Cytogenetics: 12p13.31
Domains: CLECT
Protein Families: Druggable Genome, Transmembrane
MW: 21.7 kDa

Gene Summary: This gene encodes a member of the natural killer cell receptor C-type lectin family. The encoded protein inhibits osteoclast formation and contains a transmembrane domain near the N-terminus as well as the C-type lectin-like extracellular domain. Several alternatively spliced transcript variants have been identified for this gene. [provided by RefSeq, Oct 2010]

Product images:



Circular map for RC213794



Western blot validation of overexpression lysate (Cat# [LY415703]) using anti-DDK antibody (Cat# [TA50011-100]). Left: Cell lysates from untransfected HEK293T cells; Right: Cell lysates from HEK293T cells transfected with RC213794 using transfection reagent MegaTran 2.0 (Cat# [TT210002]).