

## Product datasheet for **RC213786**

### CATSPER4 (NM\_198137) Human Tagged ORF Clone

#### Product data:

Product Type:	Expression Plasmids
Product Name:	CATSPER4 (NM_198137) Human Tagged ORF Clone
Tag:	Myc-DDK
Symbol:	CATSPER4
Mammalian Cell Selection:	Neomycin
Vector:	pCMV6-Entry (PS100001)
E. coli Selection:	Kanamycin (25 ug/mL)



[View online »](#)

**ORF Nucleotide Sequence:**

>RC213786 ORF sequence  
 Red=Cloning site Blue=ORF Green=Tags(s)

TTTTGTAATACGACTCACTATAGGGCGGCCGGAATTCGTCGACTGGATCCGGTACCGAGGAGATCTGCC  
 GCC**CGCATCGCC**

ATGAGGGATAATGAAAAGCCTGGTGGCAGCAATGGACCTCCCATACAGGCCTCGAGGGGTGGGGCGGA  
 CTCAGGAGGACCGTATGGGGTTGGAGGGCAGTAGCTGCACTGAGGGGCGCCCTCTCCCTGCAGAG  
 TACCATTACGAGTCCTACGGTCGGCCAGAGGAGCAAGTCTCATCAACCGCCAGGAAATCACGAACAAA  
 GCGGACGCTGGGACATGCAGGAGTTCATCACTCACATGTACATCAAGCAGCTGCTCCGACACCCCGCT  
 TCCAAGTCTGCTGGCCCTGCTGCTGGTATCAATGCCATCACCATCGCTCTCCGTACCAACTCCTACCT  
 GGACCAGAAACTATGAGTTGTTCTCTACCATAGATGACATTGTGCTGACCATCCTTCTTTGTGAGGTT  
 CTCCTTGGCTGGCTCAATGGCTTCTGGATTTCTGGAAGGACGGCTGGAACATCCTCAACTCATTATCG  
 TCTTTATCTTCTTGGGTTCTTCAATGAAATCAATATCCCTCCATCAACTACACTCTCAGGGC  
 GCTTCGCTGGTGCATGTGTGCATGGCGGTGGAGCCCTCGCCCGGATCATCCGGTCATCTGCAGTCG  
 GTGCTGACATGGCCAATATCATGGTCCATCCTCTTCTTCATGCTGGTTTTTCCGTGTTGGAGTAA  
 CACTCTTTGGTGCATTCTGTGCCAAGCATTCCAGAACATACAGTTGCGCTGTACACCCTTTCATCTG  
 CATCACCCAGGACGGCTGGTGGACATCTACAGTACTCCAGACAGAGAAGAGGGAATATGCAATGGAG  
 ATGGGGGTGCCATCTACTTTACCATCTTCATCACCATCGGTGCCTTCATTGGCATCAACCTGTTTCGTC  
 TCGTGGTGACCACCACTGGAGCAAATGATGAAGGCAGGAGAGCAGGGACAACGCAACGAATAACCTT  
 TAGTGAGACAGGCGCAGAGGAAGAGGAGGAGAAATGACCAGCTGCCACTGGTGCATTGTGTGGTCCGCGC  
 TCGGAGAAATCTGGTCTCCTCCAGGAACCCCTTGGGGAGGCCCTGTGCAACTCTCAGAAAACACGT  
 GTGACAACCTTTGCTTGGTCTTGGAGCAATACAGGAGAACCTGAGGCAGTACAAGGAGATCCGAGATGA  
 ACTCAACATGATTGTGGAGGAGGTGCGCGCAATCCGCTTCAACCAGGAGCAGGAGTCAGAGGTGTTGAAC  
 AGGCGCTCGTCGACGAGCGGGTCTTGGAGACTACGTATCCTCAAGGACATCCGCCAGATGTCTAACAGC  
 AAGACTTGCTCAGTGCCTCGTTAGCATGGAAAAGTTTCATGACTCTAGCTCACAAATACTCCTAAAAA  
 ACACAAGAGCAGCCACTG

**ACGCGT**ACGCGGCCGCTCGAGCAGAAACTCATCTCAGAAGAGGATCTGGCAGCAAATGATATCCTGGATT  
 ACAAGGATGACGACGATAAGGTTTAA

**Protein Sequence:**

>RC213786 protein sequence  
 Red=Cloning site Green=Tags(s)

MRDNEKAWWQWTSHTGLEGWGGTQEDRMFGGAVAALRGRPSPLQSTIHESYGRPEEQVLINRQEITNK  
 ADAWDMQEFITHMYIKQLLRHPAFQLLLALLLVINAITIALRTNSYLDQKHYELFSTIDDIVLTILLCEV  
 LLGWLNGFWIFWKDGNILNFIIVFILLRFFINEINIPSYNYTLRALRLVHVCMAVEPLARIIRVILQS  
 VPDMANIMVLILFFMLVFSVFGVTLFGAFVPKHFQNIQVALYTLFCITQDGWVDIYSDFTTEKREYAME  
 IGGAIYFTIFITIGAFIGINLFIIVVTTNLEQMMKAGEQGGQRIITFSETGAESEEEENDQLPLVHCVVAR  
 SEKSGLLQEPLAGPLSNLSENTCDNFCLVLEAIQENLRQYKEIRDELNMIVVEEVRAIRFNQEQSEVLN  
 RRSSTSGSLETTSSKDIRQMSQQDQLLSALVSMKVHDSQILLKHKSSH

**TR**TRPLEQKLISEEDLAANDILDYKDDDDKV

**Chromatograms:**

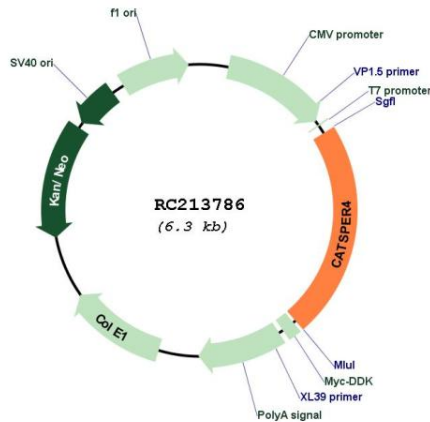
[https://cdn.origene.com/chromatograms/mk6563\\_e12.zip](https://cdn.origene.com/chromatograms/mk6563_e12.zip)

**Restriction Sites:**

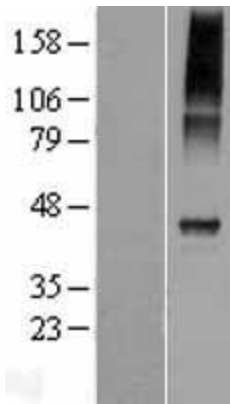
Sgfl-Mlul



**Cytogenetics:** 1p36.11  
**Protein Families:** Druggable Genome, Ion Channels: Other, Transmembrane  
**MW:** 54.1 kDa  
**Gene Summary:** Voltage-gated calcium channel that plays a central role in calcium-dependent physiological responses essential for successful fertilization, such as sperm hyperactivation, acrosome reaction and chemotaxis towards the oocyte.[UniProtKB/Swiss-Prot Function]

**Product images:**


Circular map for RC213786



Western blot validation of overexpression lysate (Cat# [LY405068]) using anti-DDK antibody (Cat# [TA50011-100]). Left: Cell lysates from untransfected HEK293T cells; Right: Cell lysates from HEK293T cells transfected with RC213786 using transfection reagent MegaTran 2.0 (Cat# [TT210002]).