

Product datasheet for RC213785

DCL 1 (CD302) (NM_014880) Human Tagged ORF Clone

Product data:

Product Type:	Expression Plasmids
Product Name:	DCL 1 (CD302) (NM_014880) Human Tagged ORF Clone
Tag:	Myc-DDK
Symbol:	DCL 1
Synonyms:	BIMLEC; CLEC13A; DCL-1; DCL1
Mammalian Cell Selection:	Neomycin
Vector:	pCMV6-Entry (PS100001)
E. coli Selection:	Kanamycin (25 ug/mL)
ORF Nucleotide Sequence:	>RC213785 representing NM_014880 Red=Cloning site Blue=ORF Green=Tags(s)

TTTTGTAATACGACTCACTATAGGGCGGCCGGAATTCGTCGACTGGATCCGGTACCGAGGAGATCTGCC
GCC**CGATCGCC**

ATGCTCCGGCCGCGCTGCCCGCTCCTGCTGCCGTTGCTGGGCCTCGCCGCTGCTGCCGTCGGGACT
GTCCTTCATCTACTTGGATTCAGTTCCAAGACAGTTGTTACATTTTTCTCCAAGAAGCCATCAAAGTAGA
AAGCATAGAGGATGTCAGAAATCAGTGTACTGACCATGGAGCGGACATGATAAGCATACATAATGAAGAA
GAAAATGCTTTTATACTGGATACTTTGAAAAGCAATGGAAAGGCCAGATGATATCCTACTAGGCATGT
TTTATGACACAGATGATGCGAGTTTCAAGTGGTTTGATAATTCAAATATGACATTTGATAAGTGGACAGA
CCAAGATGATGATGAGGATTTAGTTGACACCTGTGCTTTTCTGCACATCAAGACAGGTGAATGGAAAAAA
GGAAATTTGTAAGTTTCTCTGTGGAAGGAACACTATGCAAAACAGCTATCCCATACAAAAGGAAATATT
TATCAGATAACCACATTTAATATCAGCATTGGTGATTGCTAGCACGGTAATTTTGACAGTTTTGGGAGC
AATCATTTGGTTCCTGTACAAAAACATTTCTGATTCTCGTTTCACCACAGTTTTTTCAACCCGACCCCAA
TCACCTTATAATGAAGACTGTGTTTTGGTAGTTGGAGAAGAAAATGAATATCCTGTTCAATTTGAC

ACGCGTACGCGGCCGCTCGAGCAGAACTCATCTCAGAAGAGGATCTGGCAGCAAATGATATCCTGGATT
ACAAGGATGACGACGATAAGGTTTAA



[View online »](#)

Reconstitution Method:

1. Centrifuge at 5,000xg for 5min.
2. Carefully open the tube and add 100ul of sterile water to dissolve the DNA.
3. Close the tube and incubate for 10 minutes at room temperature.
4. Briefly vortex the tube and then do a quick spin (less than 5000xg) to concentrate the liquid at the bottom.
5. Store the suspended plasmid at -20°C. The DNA is stable for at least one year from date of shipping when stored at -20°C.

RefSeq: [NM_014880.5](#)

RefSeq Size: 3740 bp

RefSeq ORF: 699 bp

Locus ID: 9936

UniProt ID: [Q8IX05](#)

Cytogenetics: 2q24.2

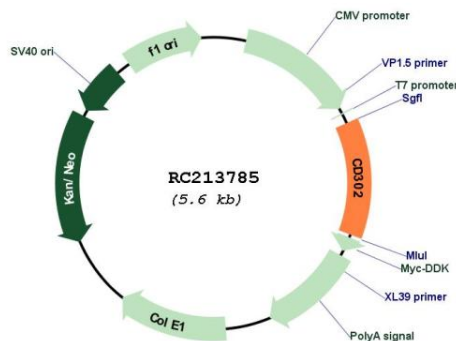
Domains: CLECT

Protein Families: Druggable Genome, Transmembrane

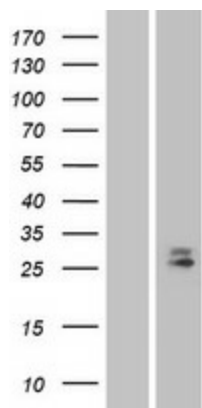
MW: 26 kDa

Gene Summary: CD302 is a C-type lectin receptor involved in cell adhesion and migration, as well as endocytosis and phagocytosis (Kato et al., 2007 [PubMed 17947679]).[supplied by OMIM, Aug 2008]

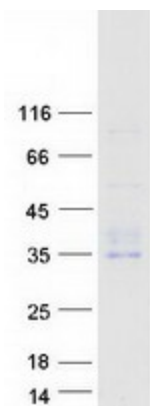
Product images:



Circular map for RC213785



Western blot validation of overexpression lysate (Cat# [LY402391]) using anti-DDK antibody (Cat# [TA50011-100]). Left: Cell lysates from untransfected HEK293T cells; Right: Cell lysates from HEK293T cells transfected with RC213785 using transfection reagent MegaTran 2.0 (Cat# [TT210002]).



Coomassie blue staining of purified CD302 protein (Cat# [TP313785]). The protein was produced from HEK293T cells transfected with CD302 cDNA clone (Cat# RC213785) using MegaTran 2.0 (Cat# [TT210002]).