

Product datasheet for **RC213781**

APPBP1 (NAE1) (NM_003905) Human Tagged ORF Clone

Product data:

Product Type:	Expression Plasmids
Product Name:	APPBP1 (NAE1) (NM_003905) Human Tagged ORF Clone
Tag:	Myc-DDK
Symbol:	APPBP1
Synonyms:	A-116A10.1; APPBP1; HPP1; ula-1
Mammalian Cell Selection:	Neomycin
Vector:	pCMV6-Entry (PS100001)
E. coli Selection:	Kanamycin (25 ug/mL)



[View online »](#)

ORF Nucleotide Sequence:

>RC213781 representing NM_003905
 Red=Cloning site Blue=ORF Green=Tags(s)

TTTTGTAATACGACTCACTATAGGGCGGCCGGAATTCGTCGACTGGATCCGGTACCGAGGAGATCTGCC
 GCC**CGGATCGCC**

ATGGCGCAGCTGGAAAGCTGCTCAAGGAGCAGAAGTACGACCGCAGCTGAGGTTGTGGGTGATCATG
 GGCAAGAGGCTTTAGAATCTGCTCATGTTTGCCTAATAAATGCAACAGCCACAGGAACTGAAATCTTAA
 AAACCTGGTACTACCAGGTATTGGTTCGTTTACAATTATTGATGGAAATCAGGTCAGCGGAGAAGATGCT
 GGAAACAATTTCTCCTCAAAGAAGCAGTATCGGCAAGAACCGAGCTGAAGCTGCCATGGAATCTTAC
 AAGAATTAATAGCGATGCTCTGGAAGTTTTGTGGAAGAGAGTCCAGAAAACCTTCTAGACAATGATCC
 CTCATTTTTCTGAGGTTACTGTTGTAGTTGCAACTCAGCTTCTGAAAGCACTTCACTACGCTTAGCA
 GATGTCCTCTGGAATCCAGATTCCTCTTTGATCTGTAGGACATATGGACTAGTTGGTTATATGAGGA
 TCATTATAAAGAACATCCAGTAATAGAATCTCATCCAGATAATGCATTAGAGGATCTACGACTAGATAA
 GCCATTTCTGAACTGAGAGAACATTTTTCAGTCTATGATTTGGATCATATGGAAAAAAGACCACAGT
 CATACTCCATGGATTGTGATCATAGCTAAATTTAGCACAGTGGTATAGTGAACAATGGACGAATAC
 CTAACACGTATAAAGAAAAAGAGGACTTCAGAGATTTGATTAGACAAGGAATTTAAAAAATGAAATGG
 GGCTCCAGAAGATGAAGAGAATTTGAAGAAGCTATTAATAATGTGAACACAGCACTAAATACAACCTCAG
 ATCCCAAGCAGTATTGAAGATATATTAATGATGATCGCTGCATAAATATCACCAACAGACTCCATCAT
 TTTGGATTTAGCTCGTGCCTTAAAGGAATTTGTGGCCAAAGAGGGTCAAGGAAATTTACCTGTTGAGG
 CACAATTCCTGATGATGATGTCAGATTGAGGCAATATATAAACTGCAAAACGTTTACCTGAAAAAGCA
 AAGAAAGATGCTGCCGCTGTGGTAATCATGTTGCCAAATGCTGCAGTCCATTGGCCAGGACCAGAGT
 CCATTTCCAGAAAAGAATTAATAACTCTGCAAGCAATTCGCAATTTCTCGAGTGGTAAGATGTCGATC
 CTAGCTGAAGAATATGGTTGGATACAATTAACAAGGATGAAATTTATTCTAGCATGGACAATCCAGAT
 AATGAAATAGTGTGACTTAATGTTACGGGCTGTTGATAGATTTATAAACAACAGGGTATGATCCAG
 GAGTATCTAACTCAAGTTGAAGAAGATATAGGAAAGTTGAAGTCTTGTCTCACTGGCTTCCTTCAGGA
 ATATGGTTTATCTGTAATGGTGAAGATGATTATGTCCACGAATTTTGGCGATATGGAGCTGCTGAGCCA
 CATACCATTGCTGCATTCTGGGGGAGCTGCTGCTCAAGAGGTCATCAAATAATCACCAACAATTTG
 TAATTTTAATAACTTACATTTACAGTGGCATGTCACAACTTCAGCAACTTTCCAGTTG

ACGCGTACGCGGCCGCTCGAGCAGAACTCATCTCAGAAGAGGATCTGGCAGCAAATGATATCCTGGATT
 ACAAGGATGACGACGATAAGGTTTAA

Protein Sequence:

>RC213781 representing NM_003905
 Red=Cloning site Green=Tags(s)

MAQLGKLLKEQKYDRQLRLWGDHGQEALESADVCLINATATGTEILKNLVLPGIGSFTIIDGNQVSGEDA
 GNNFFLQRSSIGKNRAEAAMEFLQELNSDVSGSFVEESPENLLDNDPSFFCRFTVVVATQLPESTLRLA
 DVLWNSQIPLLICRTYGLVGYMRIIIEKHPVIESHPDNAEDLRDKPFPELREHFQSYDLDHMEKKDHS
 HTPWIVIIAKYLAQWYSETNGRIPKTYKEKEDFRDLIRQGILKNENGAPEDENFEAAIKNVNTALNTTQ
 IPSSIEDIFNDDRCINITKQTPSWILARALKEFVAKEGQGNLPVRGTIPDMIADSGKYIKLQNVYREKA
 KKDAAAVGNHVAKLLQSIGQAPESISEKELKLLCSNSAFLRVVRCRSLAEEYGLDTINKDEIISMDNPD
 NEIVLYMLRAVDRFHKQGRYPGVSNYQVEEDIGKLSCLTGFLQEYGLSVMVKDDYVHEFCRYGAAEP
 HTIAAFLGGAAAQEVIKIITKQFVIFNNTYIYSGMSQTSATFQL

TRTRPLEQKLISEEDLAANDILDYKDDDDKV

Chromatograms:

https://cdn.origene.com/chromatograms/mk6208_c07.zip

Restriction Sites:

Sgfl-MluI

Cloning Scheme:


ACCN: NM_003905

ORF Size: 1602 bp

OTI Disclaimer: The molecular sequence of this clone aligns with the gene accession number as a point of reference only. However, individual transcript sequences of the same gene can differ through naturally occurring variations (e.g. polymorphisms), each with its own valid existence. This clone is substantially in agreement with the reference, but a complete review of all prevailing variants is recommended prior to use. [More info](#)

OTI Annotation: This clone was engineered to express the complete ORF with an expression tag. Expression varies depending on the nature of the gene.

Components: The ORF clone is ion-exchange column purified and shipped in a 2D barcoded Matrix tube containing 10ug of transfection-ready, dried plasmid DNA (reconstitute with 100 ul of water).

Reconstitution Method:

1. Centrifuge at 5,000xg for 5min.
2. Carefully open the tube and add 100ul of sterile water to dissolve the DNA.
3. Close the tube and incubate for 10 minutes at room temperature.
4. Briefly vortex the tube and then do a quick spin (less than 5000xg) to concentrate the liquid at the bottom.
5. Store the suspended plasmid at -20°C. The DNA is stable for at least one year from date of shipping when stored at -20°C.

RefSeq: [NM_003905.4](#)

RefSeq Size: 1820 bp

RefSeq ORF: 1605 bp

Locus ID: 8883

UniProt ID: [Q13564](#)

Cytogenetics: 16q22.1

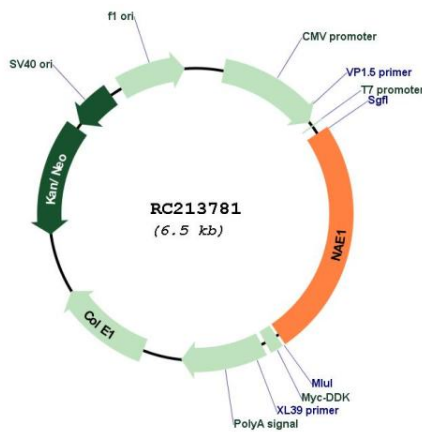
Domains: ThiF

Protein Pathways: Alzheimer's disease

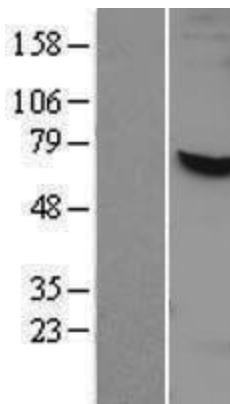
MW: 60.1 kDa

Gene Summary: The protein encoded by this gene binds to the beta-amyloid precursor protein. Beta-amyloid precursor protein is a cell surface protein with signal-transducing properties, and it is thought to play a role in the pathogenesis of Alzheimer's disease. In addition, the encoded protein can form a heterodimer with UBE1C and bind and activate NEDD8, a ubiquitin-like protein. This protein is required for cell cycle progression through the S/M checkpoint. Three transcript variants encoding different isoforms have been found for this gene. [provided by RefSeq, Jul 2008]

Product images:



Circular map for RC213781



Western blot validation of overexpression lysate (Cat# [LY418361]) using anti-DDK antibody (Cat# [TA50011-100]). Left: Cell lysates from untransfected HEK293T cells; Right: Cell lysates from HEK293T cells transfected with RC213781 using transfection reagent MegaTran 2.0 (Cat# [TT210002]).