

## Product datasheet for **RC213779**

### PHF16 (JADE3) (NM\_001077445) Human Tagged ORF Clone

#### Product data:

|                           |   |
|---------------------------|---|
| Product Type:             | Expression Plasmids                                 |
| Product Name:             | PHF16 (JADE3) (NM_001077445) Human Tagged ORF Clone |
| Tag:                      | Myc-DDK   |
| Symbol:                   | PHF16   |
| Synonyms:                 | JADE-3; PHF16                                       |
| Mammalian Cell Selection: | Neomycin  |
| Vector:                   | pCMV6-Entry (PS100001)                              |
| E. coli Selection:        | Kanamycin (25 ug/mL)                                |



[View online »](#)

ORF Nucleotide  
Sequence:

>RC213779 ORF sequence  
Red=Cloning site Blue=ORF Green=Tags(s)

TTTTGTAATACGACTCACTATAGGGCGGCCGGGAATTCGTGACTGGATCCGGTACCGAGGAGATCTGCC  
GCC**CGCATCGCC**

ATGAAACGCCATAGGCCTGTCAGCAGCAGTGACAGTTCAGACGAAAGTCCTTCCACTTCCTTTACTTCTG  
GCTCAATGTATAGGATCAAGTCAAAAATTCCAAATGAACACAAGAAACCTGCTGAGGTATTCGGGAAGGA  
CCTCATCAGTGCCATGAACTTCCAGATTCTACCACATTAATCCTGATAGCTATTACCTCTTTGCTGAT  
ACATGGAAGGAAGAATGGGAAAAGGGAGTCCAGGTACCAGCCAGTCCAGACACCGTTCCACAGCCTTCTC  
TCAGGATTATAGCTGAGAAGGTAAGGACGTTCTGTTTATCCGACCCCGGAAGTATATTCAGTCTCCAG  
CCCAGACACCACAGAGCCTGGCTACATCAACATCATGGAGTTGGCAGCATCTGTTTGCCGCTATGACCTA  
GATGACATGGACATCTTCTGGCTTCAGGAACTCAATGAAGACCTTGCAGAAATGGGTTGTGGCCAGTTG  
ATGAGAATCTTATGGAAGACAGTAGAAGTCTGGAACGCCATTGCCATGAAAAATGAACCATGCTAT  
TGAGACAGAGGAAGGGCTAGGCATAGAGTATGATGAAGATGTGATCTGTGATGTGTGCCGCTCCAGAC  
AGTGAAGAAGGGAATGATATGGTGTCTGTGATAAGTGTAACTGTGTGCATCAGGCCTGCTATGGCA  
TCCTCAAGGTCCCAGAAGGCAGCTGGCTGTGTCGCTCCTGTGTCCTGGCATTATCCGCAATGTGTGTT  
ATGTCCAAAGAAAGGTGGAGCCCTGAAGACCACCAAGACAGGGACTAAATGGGCTCATGTGAGCTGTGCC  
CTGTGGATCCCAGAGGTGAGCATTGCTTGTCTGAGAGGATGGAACCGATCACGAAGATCTCCACATCC  
CACCCAGTCGGTGGCCCTTAGCTGCAACTTGTGCAAGTTGAAGACGGGGGCTTGTATTACAGTGTCTAT  
AAAAAGCTGCATCACTGCCTTCCACGTCACCTGTGCCTTGTGAGCAGGCCTAGAGATGAAGACCATCCTA  
AGTGAGGGAGACGAAGTGAAGTTCAAGTCATATTGCCTCAAGCATAGCCAAAACAGGCAGAACTGGAG  
AAGCTGAGTACCCCAACACAGGGCTAAAGAGCAGAGCCAGGCCAAAAGTGAGAAAACAGCCTGCGGGC  
ACAGAAGCTTCGGGAGCTGGAGGAGGAGTTCTATTCTTGGTACGAGTGAAGATGTGGCCGACAGACTG  
GGTATGCCACGCTAGCTGTGGACTTTATCTATAACTACTGAAAAGTGAAGCGGAAAAGTAACTTCAATA  
AGCCATTATTTCTCCAAAGGAGGATGAAGAAAATGGGCTGGTGCAGCCAAAAGAGGAAAGCATTACAC  
TCGAATGAGAATGTTTATGCATCTACGCCAGGACCTGGAGAGGGTCCGAAATCTGTGCTATATGATAAGC  
AGACGAGAGAAGCTGAAGCTGTACACAACAAAATACAGGAACAGATCTTCGTTTGAAGTCCAGCTTC  
TTAACCAAGAAATGATGCAGGGCTTCTTTGACAAATGCACTTGAAAAGTCACTGTTTTACCCACCACC  
AAGAATTACCTTGAAGTTAAAAATGCCAAATCAACCCAGAAGACCACAGAAACAGCTCCACAGAAACC  
GATCAGCAGCCCCACTCTCCTGACAGCAGCTCATCTGTTACAGTATAAGGAACATGCAGGTGCCTCAGG  
AGTCACTAGAAAATGAGAACAAAATCGTATCCGAGATACCCACTAGAGAGCAAGAATAACCGTTTGTGGC  
CAGTCTCAGCCATTCTAGGAGTGAAGCAAGGAGTCCAGTCTGCTTGGAGAACCCCGTCTCGGAGTGC  
TATCATGGGCAGTCACTGGGAAAGCCTCTGGTCTTCAGGCTGCCCTCCATGGACAGTCTTCCATTGGGA  
ATGGGAAAAGTCAAGCCTAACTCCAAGTTTGCCAAATCCAATGGCCTGGAGGGCAGCTGGTCTGGGAATGT  
CACCCAAAAGACAGCTCGAGTGAGATGTTCTGTGACCAGGAGCCTGTGTTTCCAGCCCCACTTGGTCACT  
CAGGGCAGCTTTAGAAAATCCACTGTAGAACACTTTAGTAGGTCCTTTAAAGAGACCACCAATAGGTGGG  
TGAAGAACACAGAGGACCTCCAGTGTATGTGAAGCCAACCAAGAATATGAGCCCCAAGGAGCAGTTCTG  
GGTAGACAGGTTCTCAGGCGGCTGCAGGGAGAGCTCCATATCAGGAAAATGATGGCTATTGCCAGAT  
TTGGAGCTGAGTGATTCAGAGGCAGAAAAGTGTGGGAATAAAGAAAAAGTCAGGGTAAGGAAAGATAGCT  
CAGACAGGAAAAATCCTCCCATGACTCTAGACGGGATTGCCATGGTAAAAGCAAGACACATCCCCTTTC  
CCACAGTTCAATGCAAAGG

**ACGCGT**ACGCGGCCGCTCGAGCAGAAACTCATCTCAGAAGAGGATCTGGCAGCAAATGATATCCTGGATT  
ACAAGGATGACGACGATAAGGTTTAA

**Protein Sequence:** >RC213779 protein sequence  
Red=Cloning site Green=Tags(s)

MKRHRPVSSDSSDESPSTSFTSGSMYRIKSKIPNEHKKPAEVFRKDLISAMKLPDSSHINPDSYLFAD  
TWKEWEKGVQVPASPDTPVQPSLRIIAEKVKDVL FIRPRKYIHCSPTTEPGYINIMELAASVCRYDL  
DDMDIFWLQELNEDLAEMGCGPVDENLMEKTVEVLERHCHENMNHAIETEEGLGIEYDEDVICDVCRSPD  
SEEGNDMVFCDKCNVCVHQACYGILKVPESWLCRSCVLGIYPQCVLCPKKGALKTTKTGTKWAHVSCA  
LWIPEVSIACPERMEPITKISHIPPSRWALVCNLCKLKTGACIQCSIKSCITAFHVTCAFEHGLEMKTIIL  
DEGDEVKFSYCLKHSQNRQKLGEAEYPHRAKEQSQAQSEKTSLRAQKLRELEEEFYSLVRVEDVAAEL  
GMPTLAVDFIYNYWKLKRKSNFNKPLFPPKEDEENGLVQPKEESIHTMRMFMHLRQDLERVRNLCYMIS  
RREKLLSHNKIQEQIFGLQVQLLNQEI DAGLPLTNALENSLFYPPPRITLKLKMPKSTPEDHRNSSTET  
DQQPHSPDSSSSVHSIRNMQVPQESLEMRTKSYPRYPLESKNNRLLASLSHRSEAKESSPAWRTPSSEC  
YHGQSLGKPLVLQAALHGQSSIGNGKSQPNSKFAKSNGLEGSWSGNVTQKDSSEMFCQEPVFSPLVVS  
QGSFRKSTVEHFSRSFKETTNRWVKNTEDLQCYVKPTKNMSPKEQFWGRQVLRRSAGRAPYQENDGYCPD  
LELSDSEAESDGNKEKVRVRKDSRDREPPHDSRRDCHGKSKTHPLSHSSMQR

TRTRPLEQKLISEEDLAANDILDYKDDDDKV

**Chromatograms:** [https://cdn.origene.com/chromatograms/mk6444\\_d09.zip](https://cdn.origene.com/chromatograms/mk6444_d09.zip)

**Restriction Sites:** SgfI-MluI

Cloning Scheme:



ACCN: NM\_001077445

ORF Size: 2469 bp

OTI Disclaimer: The molecular sequence of this clone aligns with the gene accession number as a point of reference only. However, individual transcript sequences of the same gene can differ through naturally occurring variations (e.g. polymorphisms), each with its own valid existence. This clone is substantially in agreement with the reference, but a complete review of all prevailing variants is recommended prior to use. [More info](#)

OTI Annotation: This clone was engineered to express the complete ORF with an expression tag. Expression varies depending on the nature of the gene.

Components: The ORF clone is ion-exchange column purified and shipped in a 2D barcoded Matrix tube containing 10ug of transfection-ready, dried plasmid DNA (reconstitute with 100 ul of water).

**Reconstitution Method:**

1. Centrifuge at 5,000xg for 5min.
2. Carefully open the tube and add 100ul of sterile water to dissolve the DNA.
3. Close the tube and incubate for 10 minutes at room temperature.
4. Briefly vortex the tube and then do a quick spin (less than 5000xg) to concentrate the liquid at the bottom.
5. Store the suspended plasmid at -20°C. The DNA is stable for at least one year from date of shipping when stored at -20°C.

**RefSeq:** [NM\\_001077445.2](#), [NP\\_001070913.1](#)

**RefSeq Size:** 4713 bp

**RefSeq ORF:** 2472 bp

**Locus ID:** 9767

**UniProt ID:** [Q92613](#)

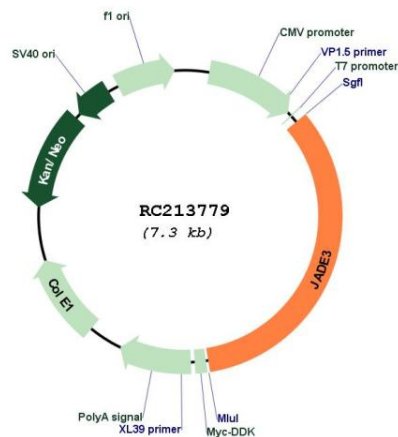
**Cytogenetics:** Xp11.3

**Protein Families:** Druggable Genome, Transcription Factors

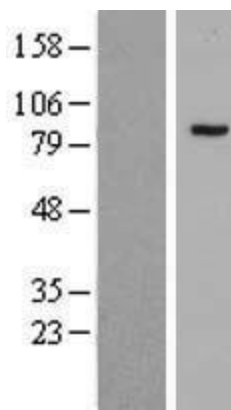
**MW:** 93.8 kDa

**Gene Summary:** This gene encodes a member of a family of large proteins containing PHD (plant homeo domain)-type zinc fingers. The encoded protein may be associated in a nuclear complex that functions in histone H4 acetylation. Alternative splicing results in multiple transcript variants encoding the same protein. [provided by RefSeq, Aug 2013]

## Product images:



Circular map for RC213779



Western blot validation of overexpression lysate (Cat# [LY415071]) using anti-DDK antibody (Cat# [TA50011-100]). Left: Cell lysates from untransfected HEK293T cells; Right: Cell lysates from HEK293T cells transfected with [RC219274] using transfection reagent MegaTran 2.0 (Cat# [TT210002]).