

Product datasheet for **RC213774**

RIPPLY1 (NM_138382) Human Tagged ORF Clone

Product data:

Product Type: Expression Plasmids
Product Name: RIPPLY1 (NM_138382) Human Tagged ORF Clone
Tag: Myc-DDK
Symbol: RIPPLY1
Mammalian Cell Selection: Neomycin
Vector: pCMV6-Entry (PS100001)
E. coli Selection: Kanamycin (25 ug/mL)
ORF Nucleotide Sequence: >RC213774 representing NM_138382
Red=Cloning site Blue=ORF Green=Tags(s)

TTTTGTAATACGACTCACTATAGGGCGGCCGGAATTCGTCGACTGGATCCGGTACCGAGGAGATCTGCC
GCC**CGATCGCC**

ATGGACTCTGCTGCCTGTGCTGCTGCCACCCCTGTTCCAGCCCTGGCTTTGGCCCTAGCTCCAGACC
TAGCACAAGCCCCACTGGCACTCCCTGGCTGTTAAGCCCATCTGCCTTCTCCTCTGGACAAGAAGT
AAATGGGAGTGAAAGAGGAAGTGTCTCTGGAGGCCCTGGCTGTCTTCCACAAATGACTCCCAAGGCAG
ATGAGGAAGCTGGTGGATTTGGCTGCTGGTGGGCAACGGCTGCTGAGGTACCAAGGCTGAATCCAAGT
TCCATCACCTGTCAAGCTCTTCTGGCCTAAATCCCGCTCCTTCGACTATCTGTACAGTGTGGGGAGAT
TTACTGCAGAACTTTCCTGTCCAGGCAACCTAACCTATACGAGGACTCAGACAGCGAAGAAGAAGAG
GAAGATGAAGAGCAGGAGGATGAAGAAGAGAAG

ACGCGTACGCGGCCGCTCGAGCAGAACTCATCTCAGAAGAGGATCTGGCAGCAAATGATATCCTGGATT
ACAAGGATGACGACGATAAGGTTTAA

Protein Sequence: >RC213774 representing NM_138382
Red=Cloning site Green=Tags(s)
MDSAACAAAATPVPALALALAPDLAQAPLALPGLLSPSCLLSSGQEVNGSERGTCLWRPWLSSSTNDSRQ
MRKLVDLAAGGATAAEVTKAESKFHHPVRLFWPKSRFDLYLSAGEILLQNFVQATINLYEDSDSEEEE
EDEEQEDEEEK

TRTRPLEQKLISEEDLAANDILDYKDDDDKV

Chromatograms: https://cdn.origene.com/chromatograms/mk8030_a03.zip

Restriction Sites: SgfI-MluI



[View online >](#)

Cloning Scheme:


ACCN: NM_138382

ORF Size: 453 bp

OTI Disclaimer: The molecular sequence of this clone aligns with the gene accession number as a point of reference only. However, individual transcript sequences of the same gene can differ through naturally occurring variations (e.g. polymorphisms), each with its own valid existence. This clone is substantially in agreement with the reference, but a complete review of all prevailing variants is recommended prior to use. [More info](#)

OTI Annotation: This clone was engineered to express the complete ORF with an expression tag. Expression varies depending on the nature of the gene.

Components: The ORF clone is ion-exchange column purified and shipped in a 2D barcoded Matrix tube containing 10ug of transfection-ready, dried plasmid DNA (reconstitute with 100 ul of water).

- Reconstitution Method:**
1. Centrifuge at 5,000xg for 5min.
 2. Carefully open the tube and add 100ul of sterile water to dissolve the DNA.
 3. Close the tube and incubate for 10 minutes at room temperature.
 4. Briefly vortex the tube and then do a quick spin (less than 5000xg) to concentrate the liquid at the bottom.
 5. Store the suspended plasmid at -20°C. The DNA is stable for at least one year from date of shipping when stored at -20°C.

Note: Plasmids are not sterile. For experiments where strict sterility is required, filtration with 0.22um filter is required.

RefSeq: [NM_138382.3](#)

RefSeq Size: 1031 bp

RefSeq ORF: 456 bp

Locus ID: 92129

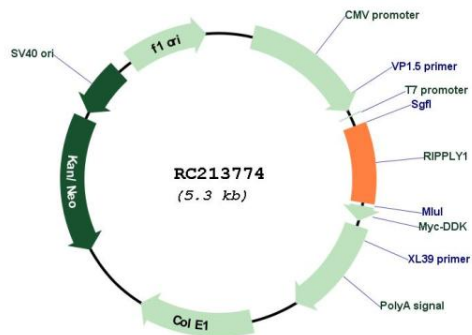
UniProt ID: [Q0D2K3](#)

Cytogenetics: Xq22.3

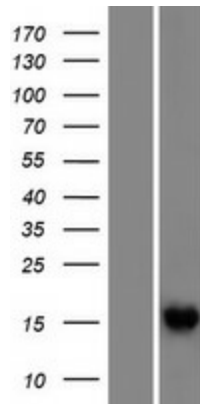
MW: 16.2 kDa

Gene Summary: This gene encodes a protein similar to a zebrafish protein which acts as a transcriptional repressor in and is required for somite segmentation in zebrafish embryos (PMID: 16326386). Multiple transcript variants encoding different isoforms have been found for this gene. [provided by RefSeq, Aug 2011]

Product images:



Circular map for RC213774



Western blot validation of overexpression lysate (Cat# [LY408647]) using anti-DDK antibody (Cat# [TA50011-100]). Left: Cell lysates from untransfected HEK293T cells; Right: Cell lysates from HEK293T cells transfected with RC213774 using transfection reagent MegaTran 2.0 (Cat# [TT210002]).