

## Product datasheet for **RC213771**

### **ARX (NM\_139058) Human Tagged ORF Clone**

#### **Product data:**

Product Type:	Expression Plasmids
Product Name:	ARX (NM_139058) Human Tagged ORF Clone
Tag:	Myc-DDK
Symbol:	ARX
Synonyms:	CT121; EIEE1; ISSX; MRX29; MRX32; MRX33; MRX36; MRX38; MRX43; MRX54; MRX76; MRX87; MRXS1; PRTS
Mammalian Cell Selection:	Neomycin
Vector:	pCMV6-Entry (PS100001)
E. coli Selection:	Kanamycin (25 ug/mL)



[View online »](#)

**ORF Nucleotide Sequence:**

>RC213771 representing NM\_139058  
 Red=Cloning site Blue=ORF Green=Tags(s)

TTTTGTAATACGACTCACTATAGGGCGGCCGGAATTCGTCGACTGGATCCGGTACCGAGGAGATCTGCC  
 GCC**CGGATCGCC**

ATGAGCAATCAGTACCAGGAGGAGGCTGCTCCGAGAGGCCCGAGTGCAAAAGTAAATCTCCAATTGCT  
 TCTCCTCTACTGCATCGACAGCATCCTGGGCCGAGGAGCCCGTGCAAAATGCGGTTGCTGGGAGCCGC  
 GCAGAGCTTGCCTGCTCCGCTGACCAGCCGCGCCGACCCGAAAAGGCCGTGCAAGGCTCCCTAAGAGC  
 AGCAGCGCCCGTTTCAGGCGGAGCTGCACCTGCCGCCAAGCTGCGGCGCCTGTACGGCCCGGGCGGG  
 GCCGCCTCTTACGGGTGCGGCAGCGCGGCCGGCGGCCGGCGGCCGGCGGCCAGCGGCCACGGC  
 CACGGCGGGTCCACGCGGGGAGGCCCTCCGCCACCAGCCAACCGCGGCCCGGGGAACGGCCGGAC  
 GCGCAGGGGCCCGCGGCAGCCGCGGCCGGCGGCCGGCGGCCCTGGGACACGCTCAAGATCAGCCAGG  
 CGCCGAGGTGAGCATCAGCCGAGCAAGTCGTACCGCGAGAACGGGGCGCCCTTCGTGCCGCCCGCC  
 CGCGCTGGACGAGCTGGCGGCCCGGGGGCGTACGCACCCGAGGAGCGCCTCGCGTGGCCGGCGGC  
 CCGGGCAGCGCCCGGCTGCGGGTGGTGACCCGACCCGAGGACGACGAGGAGGAGCTGCTGGAGGACG  
 AAGAAGATGAGGACGAGGAAGAGGAAGTCTGGAGGACGACGAGGAGGAGCTGCTGGAGGACGACGCCCG  
 CGCGTGTCTAAGGAGCCCGCGCTGTCTGTGGCCGCACTGGCGCCGTGGCCGACGAGCTGCCGCT  
 GCAGTGGCCACAGAGGGCGGGGAGCTGTACCCAAGGAGGAGTGTCTGTGCACCCGGAAGACGCTGAGG  
 GCAAGGACGGCGAGGACAGCGTGTGCCTCTCGCGGCAGCGACTCGGAGGAGGGGCTGTGAAACGCAA  
 ACAGAGGCGCTACCGCACCGTTCACCAGCTACCAGTGGAGGAAGTGGAGCGGCCCTCCAGAAGAGC  
 CACTACCCGAGCTTTCACAGGAGGAAGTGGCCATGAGGCTGACTTGACCGAGGCCGAGTCCAGG  
 TCTGGTCCAGAACCCTCGGCCAAGTGGCGCAAGCGGGAGAAGGCAGGCGCGCAGACCCACCCCTGG  
 GCTGCCCTTCCCGGGCGCTCTCCGCCACCCAGCCGCTCAGCCCTACCTGGACGCGAGCCCTTCCCT  
 CCGCACCCCGCGCTCGACTCCGCTTGACTGCCGCTGCCGCCCGCGCGCCGCGCCCTTCCGAGCC  
 TACCTCCGCTCCGGCTCGGCCAGCTGCCGCCAGCGGGCGCGCTGGGCTGAGCACTTCTCTCGG  
 AGCGGCGAGTGTCCGACACCCAGCTTTCATCAGCCCGGCACTCGGAGGCTCTTTTCCACAATGGCCCC  
 CTGACCAGCGCTCGACCGGCCGCGCTCCTGAGACAGCCACCCCGCGTGGAGGGCGCAGTGGCAT  
 CGGGCGCCCTGGCCGACCCGCCACGGCGGCCGACAGACGCGCCTTAGCATAGCCGCGCTGAGGCT  
 CAAGGCCAAGGACACCGGCGCAGCTCACGAGCTCAACATCTGCCGGCACACGACGGCAAGGAG  
 GTGTGC

**ACGCGT**ACGCGGCCGCTCGAGCAGAAACTCATCTCAGAAGAGGATCTGGCAGCAAATGATATCCTGGATT  
 ACAAGGATGACGACGATAAGGTTTAA

**Protein Sequence:**

>RC213771 representing NM\_139058  
 Red=Cloning site Green=Tags(s)

MSNQYQEEGCSERPECKSKSPTLLSSYCIDSIDLGRSPCKMRLLGAAQSLPAPLTSRADPEKAVQGS  
 SSAPFEAELHLPKLRRLYGPGGRLQLQAAAAAAAAAAAAAAAAATATAGPRGEAPPPPPPTARPERPD  
 GAGAAAAAAAAAAWDTLKI SQAPQVSI SRSKSYRENGAPFVPPPPALDELGGPGVTHPEERLGVAGG  
 PGSAPAAGGGTGTEDDEEELLEDEEDEDEEELLEDEEELLEDDARALLKEPRRCPVAATGAVAAAAAA  
 AVATEGGELSPKEELLHPEDAEGKDGEDSVCLSAGSDSEEGLLKRKQRRYRTFTSYQLEELERAFQKT  
 HYPDVFTRTELAMRLDLTEARVQVWFQNRRAKWRKREKAGAQTHTPPGLPFPGLSATHPLSPYLDASFPF  
 PHHPALDSAWTAAAAAAAAAFPSPPPPGSASLPPSGAPLGLSTFLGAAVFRHPAFISPAFGRLFSTMAP  
 LTSASTAAALLRQPTPAVEGAVASGALADPATAAADRRASSIAALRLKAKEHAAQLTQLNILPGTSTGKE  
 VC

**TRTRPLEQKLI**SEEDLAANDILDYKDDDDKV

**Chromatograms:**

[https://cdn.origene.com/chromatograms/mg3179\\_d01.zip](https://cdn.origene.com/chromatograms/mg3179_d01.zip)

**Restriction Sites:**

Sgfl-Mlul

**Cloning Scheme:**

**ACCN:**

NM\_139058

**ORF Size:**

1686 bp

**OTI Disclaimer:**

Due to the inherent nature of this plasmid, standard methods to replicate additional amounts of DNA in E. coli are highly likely to result in mutations and/or rearrangements. Therefore, OriGene does not guarantee the capability to replicate this plasmid DNA. Additional amounts of DNA can be purchased from OriGene with batch-specific, full-sequence verification at a reduced cost. Please contact our customer care team at [custsupport@origene.com](mailto:custsupport@origene.com) or by calling 301.340.3188 option 3 for pricing and delivery.

The molecular sequence of this clone aligns with the gene accession number as a point of reference only. However, individual transcript sequences of the same gene can differ through naturally occurring variations (e.g. polymorphisms), each with its own valid existence. This clone is substantially in agreement with the reference, but a complete review of all prevailing variants is recommended prior to use. [More info](#)

**OTI Annotation:**

This clone was engineered to express the complete ORF with an expression tag. Expression varies depending on the nature of the gene.

**Components:**

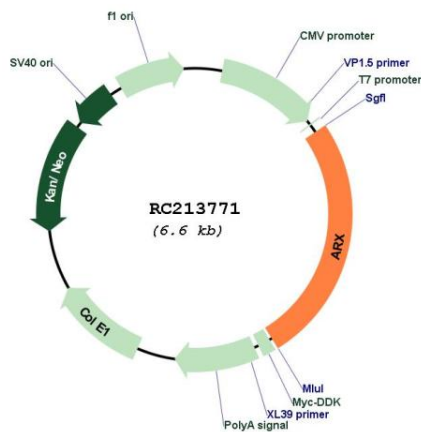
The ORF clone is ion-exchange column purified and shipped in a 2D barcoded Matrix tube containing 10ug of transfection-ready, dried plasmid DNA (reconstitute with 100 ul of water).

**Reconstitution Method:**

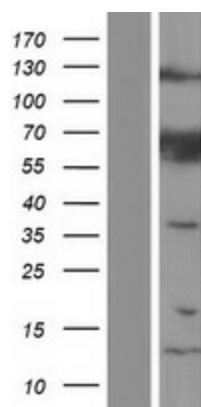
1. Centrifuge at 5,000xg for 5min.
2. Carefully open the tube and add 100ul of sterile water to dissolve the DNA.
3. Close the tube and incubate for 10 minutes at room temperature.
4. Briefly vortex the tube and then do a quick spin (less than 5000xg) to concentrate the liquid at the bottom.
5. Store the suspended plasmid at -20°C. The DNA is stable for at least one year from date of shipping when stored at -20°C.

<b>Note:</b>	Plasmids are not sterile. For experiments where strict sterility is required, filtration with 0.22um filter is required.
<b>RefSeq:</b>	<u><a href="#">NM_139058.3</a></u>
<b>RefSeq Size:</b>	2183 bp
<b>RefSeq ORF:</b>	1689 bp
<b>Locus ID:</b>	170302
<b>UniProt ID:</b>	<u><a href="#">Q96Q53</a></u>
<b>Cytogenetics:</b>	Xp21.3
<b>Domains:</b>	homeobox, OAR
<b>Protein Families:</b>	Transcription Factors
<b>MW:</b>	58 kDa
<b>Gene Summary:</b>	This gene is a homeobox-containing gene expressed during development. The expressed protein contains two conserved domains, a C-peptide (or aristaless domain) and the prd-like class homeobox domain. It is a member of the group-II aristaless-related protein family whose members are expressed primarily in the central and/or peripheral nervous system. This gene is thought to be involved in CNS development. Expansion of a polyalanine tract and other mutations in this gene cause X-linked cognitive disability and epilepsy. [provided by RefSeq, Jul 2016]

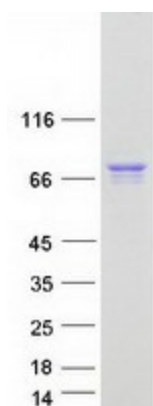
### Product images:



Circular map for RC213771



Western blot validation of overexpression lysate (Cat# [LY408408]) using anti-DDK antibody (Cat# [TA50011-100]). Left: Cell lysates from untransfected HEK293T cells; Right: Cell lysates from HEK293T cells transfected with RC213771 using transfection reagent MegaTran 2.0 (Cat# [TT210002]).



Coomassie blue staining of purified ARX protein (Cat# [TP313771]). The protein was produced from HEK293T cells transfected with ARX cDNA clone (Cat# RC213771) using MegaTran 2.0 (Cat# [TT210002]).