

Product datasheet for **RC213768**

HOXC6 (NM_004503) Human Tagged ORF Clone

Product data:

Product Type: Expression Plasmids
Product Name: HOXC6 (NM_004503) Human Tagged ORF Clone
Tag: Myc-DDK
Symbol: HOXC6
Synonyms: CP25; HHO.C8; HOX3; HOX3C
Mammalian Cell Selection: Neomycin
Vector: pCMV6-Entry (PS100001)
E. coli Selection: Kanamycin (25 ug/mL)
ORF Nucleotide Sequence: >RC213768 representing NM_004503
Red=Cloning site Blue=ORF Green=Tags(s)

TTTTGTAATACGACTCACTATAGGGCGCCGGGAATTCGTCGACTGGATCCGGTACCGAGGAGATCTGCC
GCC**CGATCGCC**

ATGAATTCCTACTTCACTAACCCCTTCCTTATCCTGCCACCTCGCCGGGGCCAGGACGTCTCCCAACG
TCGCCCTCAATCCACCGCCTATGATCCAGTGAGGCATTTCTCGACCTATGGAGCGCCGTTGCCAGAA
CCGGATCTACTCGACTCCCTTTTATTCGCCACAGGAGAATGTCGTGTTCCAGTCCAGCCGGGGCCGAT
GACTATGGATCTAATTCCTTTTACCAGGAGAAAGACATGCTCTCAAAGTGCAGACAAAACACCTTAGGAC
ATAACACACAGACCTCAATCGCTCAGGATTTTAGTTCTGAGCAGGGCAGGACTGCGCCCCAGGACCAGAA
AGCCAGTATCCAGATTTACCCCTGGATGCAGCAATGAATTCGCACAGTGGGGTCGGCTACGGAGCGGAC
CGGAGGGCGGGCCGAGATCTACTCGCGGTACCAGACCCTGGAAGTGGAGAAGGAATTTCACTTCAATC
GCTACCTAACCGGGCGCCGGCGCATCGAGATCGCCAACGCGCTTTGCCTGACCGAGCGACAGATCAAAAT
CTGGTTCAGAACCGCCGGATGAAGTGGAAAAAGAATCTAATCTCACATCCACTCTCTCGGGGGCGGC
GGAGGGGCCACCGCCGACAGCCTGGCGGAAAAGAGGAAAAGCGGGAAGAGACAGAAGAGGAGAAGCAGA
AAGAG

ACGCGTACGCGGGCGCTCGAGCAGAACTCATCTCAGAAGAGGATCTGGCAGCAAATGATATCCTGGATT
ACAAGGATGACGACGATAAGGTTTAA



[View online »](#)

Protein Sequence: >RC213768 representing NM_004503
Red=Cloning site Green=Tags(s)

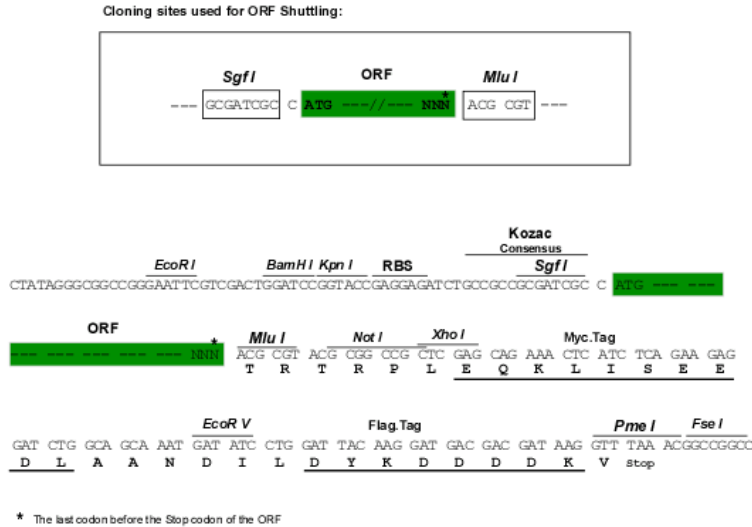
MNSYFTNPSSLCHLAGGQDVLPNVALNSTAYDPVRHFSTYGAAVAQNRIYSTPFYSPQENVVVFSSSRGPY
 DYGSNSFYQEKDMLSNCRQNTLGHNTQTSIAQDFSSSEQRTAPQDQKASIQIYPWMQRMNSHSGVGYGAD
 RRRGRQIYSRYQTLELEKEFHFNRYL TRRRRIEIANALCLTERQIKIWFQNRMKWKKESNLSTLSGGG
 GGATADSLGGKEEKRETEEEKQKE

TRTRPLEQKLISEEDLAANDILDYKDDDDKV

Chromatograms: https://cdn.origene.com/chromatograms/mg2588_d09.zip

Restriction Sites: SgfI-MluI

Cloning Scheme:



ACCN: NM_004503

ORF Size: 705 bp

OTI Disclaimer: The molecular sequence of this clone aligns with the gene accession number as a point of reference only. However, individual transcript sequences of the same gene can differ through naturally occurring variations (e.g. polymorphisms), each with its own valid existence. This clone is substantially in agreement with the reference, but a complete review of all prevailing variants is recommended prior to use. [More info](#)

OTI Annotation: This clone was engineered to express the complete ORF with an expression tag. Expression varies depending on the nature of the gene.

Components: The ORF clone is ion-exchange column purified and shipped in a 2D barcoded Matrix tube containing 10ug of transfection-ready, dried plasmid DNA (reconstitute with 100 ul of water).

Reconstitution Method:

1. Centrifuge at 5,000xg for 5min.
2. Carefully open the tube and add 100ul of sterile water to dissolve the DNA.
3. Close the tube and incubate for 10 minutes at room temperature.
4. Briefly vortex the tube and then do a quick spin (less than 5000xg) to concentrate the liquid at the bottom.
5. Store the suspended plasmid at -20°C. The DNA is stable for at least one year from date of shipping when stored at -20°C.

RefSeq: [NM_004503.4](#)

RefSeq Size: 1681 bp

RefSeq ORF: 708 bp

Locus ID: 3223

UniProt ID: [P09630](#)

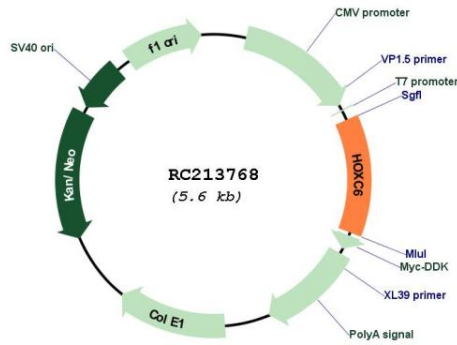
Cytogenetics: 12q13.13

Protein Families: Transcription Factors

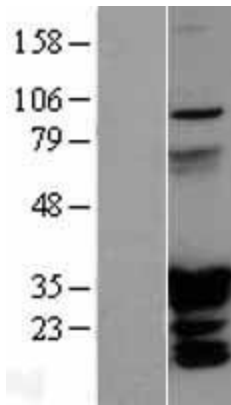
MW: 26.7 kDa

Gene Summary: This gene belongs to the homeobox family, members of which encode a highly conserved family of transcription factors that play an important role in morphogenesis in all multicellular organisms. Mammals possess four similar homeobox gene clusters, HOXA, HOXB, HOXC and HOXD, which are located on different chromosomes and consist of 9 to 11 genes arranged in tandem. This gene, HOXC6, is one of several HOXC genes located in a cluster on chromosome 12. Three genes, HOXC5, HOXC4 and HOXC6, share a 5' non-coding exon. Transcripts may include the shared exon spliced to the gene-specific exons, or they may include only the gene-specific exons. Alternatively spliced transcript variants encoding different isoforms have been identified for HOXC6. Transcript variant two includes the shared exon, and transcript variant one includes only gene-specific exons. [provided by RefSeq, Jul 2008]

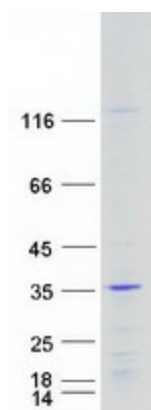
Product images:



Circular map for RC213768



Western blot validation of overexpression lysate (Cat# [LY401432]) using anti-DDK antibody (Cat# [TA50011-100]). Left: Cell lysates from untransfected HEK293T cells; Right: Cell lysates from HEK293T cells transfected with RC213768 using transfection reagent MegaTran 2.0 (Cat# [TT210002]).



Coomassie blue staining of purified HOXC6 protein (Cat# [TP313768]). The protein was produced from HEK293T cells transfected with HOXC6 cDNA clone (Cat# RC213768) using MegaTran 2.0 (Cat# [TT210002]).