

Product datasheet for RC213765

KIR2DL5B (NM_001018081) Human Tagged ORF Clone

Product data:

Product Type:	Expression Plasmids
Product Name:	KIR2DL5B (NM_001018081) Human Tagged ORF Clone
Tag:	Myc-DDK
Symbol:	KIR2DL5B
Synonyms:	KIR2DL5; KIR2DL5.2; KIR2DLX
Mammalian Cell Selection:	Neomycin
Vector:	pCMV6-Entry (PS100001)
E. coli Selection:	Kanamycin (25 ug/mL)
ORF Nucleotide Sequence:	>RC213765 representing NM_001018081 Red=Cloning site Blue=ORF Green=Tags(s)

TTTTGTAATACGACTCACTATAGGGCGGCCGGAATTCGTCGACTGGATCCGGTACCGAGGAGATCTGCC
GCC**CGATCGCC**

ATGTCGCTCATGGTCATCAGCATGGCGTGTGTTGGGTTCTTCTTGCTGCAGGGGGCTGGACACATGAGG
GTGGACAGGACAAGCCCTTGCTGTCTGCCTGGCCAGCGCTGTGGTGCCTCGAGGAGGACATGTGACTCT
TCTGTGTCGCTCTCGTCTGGGTTTACCATCTTCAGTCTGTACAAAGAAGATGGGGTGCCTGTCCCTGAG
CTCTACAACAAAATATTCTGGAAGAGCATCCTCATGGGCCCTGTGACCCCTGCACACGCAGGGACCTACA
GATGTCGGGGTTCACACCCGCGTCCCCATTGAGTGGTCGGCACCCAGCAACCCCTGGTGATCGTGGT
CACAGGTCTATTTGGGAAACCTTCACTCTCAGCCAGCCGGGCCACCGTTTCGCACAGGAGAGAACGTG
GCCTTGTCTGCAGCTCCAGGAGCTCATTGACATGTACCATCTATCCAGGGAGGGGAGGGCCCATGAAC
CTAGGCTCCCTGCAGTGGCCAGCGTCGATGGAACATTCCAGGCTGACTTTCCTCTGGGCCCTGCCACCCA
CGGAGGGACCTACACATGCTTCACTCTCTCCATGACTCACCTATGAGTGGTCAGACCCGAGTGACCCA
CTGCTTGTCTGTACAGGAACTCTTCAAGTAGTTCATCTTCACCACTGAACCAAGCTCCAAAAGTCTG
GTATCCGAGACACCTGCACATTCTGATTGGGACCTCAGTGGCTATCATCCTCTTATCATCCTCTTCTT
CTTCTCCTTTCATTGCTGCTGCTCCAACAAAAGAATGCTGCTGTAATGGACCAAGGGCCCTGCCGGGGAC
AGAACAGTGAACAGGGAGGACTTGATGATCAAGACCCCTCAGGAGGTGACATATGCACAGTTGGATCACT
CGGTTTTACACAGACAAAATCACTTCCCTTCTCAGAGGCCCAAGGCACCTCCAACAGATACCACCAT
GTACATGGAACCTCCAATGCTAAGCCAAGATCATTGTCTCCTGCCATAAGCACACAGTCAGGCCCTTG
AGGGGATCTTCTAGGGAGACAACAGCCCTGTCTCAAACCAGGGTGTAGCTCCCATGTACCAGCAGCTG
GAATC

ACGCGTACGCGGCCGCTCGAGCAGAACTCATCTCAGAAGAGGATCTGGCAGCAATGATATCCTGGATT
ACAAGGATGACGACGATAAGGTTTAA



[View online >](#)

Protein Sequence: >RC213765 representing NM_001018081
Red=Cloning site Green=Tags(s)

MSLMVISMACVGFLLQGAWTHEGGQDKPLLAWPSAVVPRGGHVTLPCRSLGFTIFSLYKEDGVPVPE
 LYNKIFWKSILMGPVTPAHAGTYRCRGSHPSPIEWAPSINPLIVVTGLFGKPSLSAQPGPTVRTGENV
 ALSCSSRSSFDMYHLSREGRAHEPRLPAVPSVDGTFQADFPLGPATHTGGTYTCFSSLHDSPEWSDPSDP
 LLVSVTGNSSSSSSPTEPSSKTGIRRHHLILIGTVAIILFIILFFLLHCCCSNKKNAAVMDQGPAGD
 RTVNREDSDDQDPQEVTYAQLDHCVFVTQTKITSPSQRPKAPPTDTMYMELPNAKPRSLSPAHHHSQAL
 RGSRETTALSQNRVASSHVPAAGI

TRTRPLEQKLISEEDLAANDILDYKDDDDKV

Chromatograms: https://cdn.origene.com/chromatograms/mk8004_g01.zip

Restriction Sites: SgfI-MluI

Cloning Scheme:



ACCN: NM_001018081

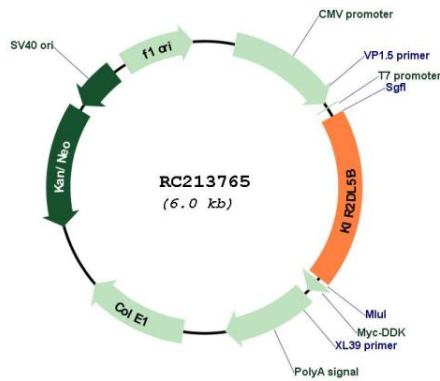
ORF Size: 1125 bp

OTI Disclaimer: Due to the inherent nature of this plasmid, standard methods to replicate additional amounts of DNA in E. coli are highly likely to result in mutations and/or rearrangements. Therefore, OriGene does not guarantee the capability to replicate this plasmid DNA. Additional amounts of DNA can be purchased from OriGene with batch-specific, full-sequence verification at a reduced cost. Please contact our customer care team at custsupport@origene.com or by calling 301.340.3188 option 3 for pricing and delivery.

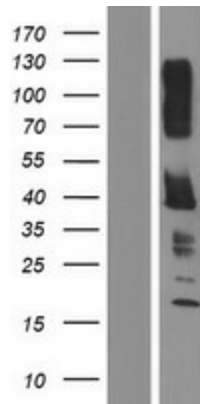
The molecular sequence of this clone aligns with the gene accession number as a point of reference only. However, individual transcript sequences of the same gene can differ through naturally occurring variations (e.g. polymorphisms), each with its own valid existence. This clone is substantially in agreement with the reference, but a complete review of all prevailing variants is recommended prior to use. [More info](#)

OTI Annotation:	This clone was engineered to express the complete ORF with an expression tag. Expression varies depending on the nature of the gene.
Components:	The ORF clone is ion-exchange column purified and shipped in a 2D barcoded Matrix tube containing 10ug of transfection-ready, dried plasmid DNA (reconstitute with 100 ul of water).
Reconstitution Method:	<ol style="list-style-type: none">1. Centrifuge at 5,000xg for 5min.2. Carefully open the tube and add 100ul of sterile water to dissolve the DNA.3. Close the tube and incubate for 10 minutes at room temperature.4. Briefly vortex the tube and then do a quick spin (less than 5000xg) to concentrate the liquid at the bottom.5. Store the suspended plasmid at -20°C. The DNA is stable for at least one year from date of shipping when stored at -20°C.
RefSeq:	<u>NM_001018081.1</u> , <u>NP_001018091.1</u>
RefSeq Size:	1632 bp
RefSeq ORF:	1128 bp
Locus ID:	553128
Cytogenetics:	19p13.3
Protein Families:	Transmembrane
MW:	40.58 kDa
Gene Summary:	Killer cell immunoglobulin-like receptors (KIRs) are transmembrane glycoproteins expressed by natural killer cells and subsets of T cells. The KIR genes are polymorphic and highly homologous and they are found in a cluster on chromosome 19q13.4 within the 1 Mb leukocyte receptor complex (LRC). The gene content of the KIR gene cluster varies among haplotypes, although several "framework" genes are found in all haplotypes (KIR3DL3, KIR3DP1, KIR3DL4, KIR3DL2). The KIR proteins are classified by the number of extracellular immunoglobulin domains (2D or 3D) and by whether they have a long (L) or short (S) cytoplasmic domain. KIR proteins with the long cytoplasmic domain transduce inhibitory signals upon ligand binding via an immune tyrosine-based inhibitory motif (ITIM), while KIR proteins with the short cytoplasmic domain lack the ITIM motif and instead associate with the TYRO protein tyrosine kinase binding protein to transduce activating signals. The ligands for several KIR proteins are subsets of HLA class I molecules; thus, KIR proteins are thought to play an important role in regulation of the immune response. [provided by RefSeq, Jul 2008]

Product images:



Circular map for RC213765



Western blot validation of overexpression lysate (Cat# [LY422645]) using anti-DDK antibody (Cat# [TA50011-100]). Left: Cell lysates from untransfected HEK293T cells; Right: Cell lysates from HEK293T cells transfected with RC213765 using transfection reagent MegaTran 2.0 (Cat# [TT210002]).