

Product datasheet for RC213758

Lipocalin like 1 protein (LCNL1) (NM_207510) Human Tagged ORF Clone

Product data:

Product Type: Expression Plasmids
Product Name: Lipocalin like 1 protein (LCNL1) (NM_207510) Human Tagged ORF Clone
Tag: Myc-DDK
Symbol: Lipocalin like 1 protein
Mammalian Cell Selection: Neomycin
Vector: pCMV6-Entry (PS100001)
E. coli Selection: Kanamycin (25 ug/mL)
ORF Nucleotide Sequence: >RC213758 representing NM_207510
Red=Cloning site Blue=ORF Green=Tags(s)

TTTTGTAATACGACTCACTATAGGGCGGCCGGAATTCGTCGACTGGATCCGGTACCGAGGAGATCTGCC
GCCGCGATCGCC

ATGGTCGGGGTGGTGTGTCAGATGACCAGGACTTCCTGGACTCCAAGGACACCATGAAGATGGCTGTGGTCT
TAGTGACCCCTTGGGAATGGTACCTGGCCCTCAAGTTGGATACCCACGCCCATGGCGGGTGCCA
GAAAATGGACACGACCTTACCGAGGGTGTGTACCGGGCAGTTCAGCAACCCAGCCATGGCCCTGAGT
GACATCCGAGTGGCCTTCTCCGACTACCGACTTTGCCTTGTGTACTTGGAGATGCGGAAAGGGGGCC
TCCGGAACCAAGTGGCTGCAGCTACGGTGGCGGGCTGCGGGGGAGAGCCAGACACCCCGCTTCGG
GTCTGGGATGTACCCCTGTGCCTGCACCAAGCCCTTTCTGCACGCGGAAGGTGGAACCGCTGGCTCCTGG
TGTCTGTGGCGCGGGTCCCGGCCCTCCTGCCCTCTCTCCCTCTCTCGCCCTCCAGCCCTTCC
TT

ACGCGTACGCGGCCGCTCGAGCAGAACTCATCTCAGAAGAGGATCTGGCAGCAATGATATCCTGGATT
ACAAGGATGACGACGATAAGGTTTAA

Protein Sequence: >RC213758 representing NM_207510
Red=Cloning site Green=Tags(s)

MVGVVSDQDFLDSKDTMKMAVVLVPLGNGDLALKFGYPTPHGGCQKMDTTFTTEGAVPGQFSNPAMALS
DIRVAFSDYQHFALLYLEMRKGLRNQWLQLYGGRAAGRRPRHPRFGSGMSPLCLHQPFLLHAEGGTAGSW
CLWPRVPAPPCPSLPLFAPPAPSL

TRTRPLEQKLI SEEDLAANDILDYKDDDDKV

Chromatograms: https://cdn.origene.com/chromatograms/mk8029_e05.zip

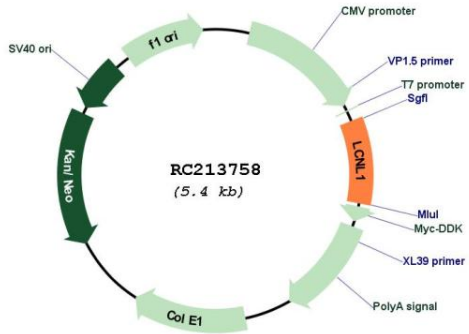
Restriction Sites: SgfI-MluI



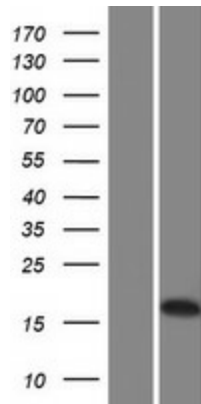
[View online »](#)

MW: 17.6 kDa

Product images:



Circular map for RC213758



Western blot validation of overexpression lysate (Cat# [LY404051]) using anti-DDK antibody (Cat# [TA50011-100]). Left: Cell lysates from untransfected HEK293T cells; Right: Cell lysates from HEK293T cells transfected with RC213758 using transfection reagent MegaTran 2.0 (Cat# [TT210002]).