

Product datasheet for RC213746

LIMS2 (NM_017980) Human Tagged ORF Clone

Product data:

Product Type:	Expression Plasmids
Product Name:	LIMS2 (NM_017980) Human Tagged ORF Clone
Tag:	Myc-DDK
Symbol:	LIMS2
Synonyms:	LGMD2W; MDRCMTT; PINCH-2; PINCH2
Mammalian Cell Selection:	Neomycin
Vector:	pCMV6-Entry (PS100001)
E. coli Selection:	Kanamycin (25 ug/mL)
ORF Nucleotide Sequence:	>RC213746 representing NM_017980 Red=Cloning site Blue=ORF Green=Tags(s)

TTTTGTAATACGACTCACTATAGGGCGGCCGGAATTCGTCGACTGGATCCGGTACCGAGGAGATCTGCC
GCC**CGATCGCC**

ATGGCGGCCCGGCTGGGTGCGCTGGCCGCGTCGGGGCTGTACCGCGCGCCAGCACCGGCAGAGCCCGC
CGCCAGCCACGGCAATATGTCGGACGCTTGGCAACGCGGTGTCCAGCGCTGCCAGGCCCGCTTCTC
CCCCCGCAGCGCATTGTCAACAGCAATGGGGAGCTGTACCATGAGCACTGCTTCGTGTGTGCCAGTGC
TTCCGGCCCTTCCCGAGGGCTCTTCTATGAGTTTGAAGGCCGGAAGTACTGCGAACACGACTTCCAAA
TGCTGTTTGTCCGTGCTGTGGATCCTGCGGTGAGTTCATCATTGCGCGTCATCAAGGCCATGAACAA
CAACTGGCACCCGGCTGCTTCCGCTGCGAGCTGTGTGATGTGGAGCTGGCTGACCTGGGCTTTGTGAAG
AATGCCCGCAGGCATCTCTGCCGCTTCCACAAACCGTGAGAAGGCCAAGGGCTGGGCAAGTACATCT
GCCAGCGGTGCCACCTGGTTCATCGACGAGCAGCCCTCATGTTACAGGAGCGACGCCTACCACCTGACCA
CTTCAACTGCACCCACTGTGGGAAGGAGCTGACAGCCGAGGCCGCGAGCTGAAGGGTGAGCTCTACTGC
CTGCCCTGCCATGACAAGATGGGCGTCCCATCTGCGGGGCTGCCGCGGCCATCGAGGGCCGAGTGG
TCAACGCGCTGGGCAAGCAGTGGCACGTGGAGCACTTTGTCTGTGCCAAGTGTGAGAAGCCATTCTGGG
GCACCGGCACTATGAGAAGAAGGGCTGGCCTACTGCGAGACTCACTACAACAGCTCTTCGGGGACGTC
TGCTACAAGTGCAGCCATGTGATTGAAGCGGATGTGGTGTGCGCCCTCAACAAGGCTGGTGTGTGAGCT
GCTTCTCCTGCTCCACCTGCAACAGCAAGCTCACCTGAAGAACAAGTTTGTGGAGTTCGACATGAAGCC
CGTGTGTAAAGAGGTGCTACGAGAAGTCCCGCTGGAGCTGAAGAAGCGGCTGAAGAAGCTGTCCGAGCTG
ACCTCCGCAAGGCCAGCCCAAGGCCACAGACCTCAACTCTGCC

ACGCGTACGCGGCCGCTCGAGCAGAACTCATCTCAGAAGAGGATCTGGCAGCAATGATATCCTGGATT
ACAAGGATGACGACGATAAGGTTTAA



[View online »](#)

Protein Sequence: >RC213746 representing NM_017980
Red=Cloning site Green=Tags(s)

MAARLGALAAAGLYRRRQHRQSPPPATGNMSDALANAVCQRCQARFSPAERIVNSNGELYHEHCFVCAQC
 FRPFPEGLFYEFEGRKYCEHDFQMLFAPCCGSCGEFIIGRVIKAMNNNWHPGCFRCELCDVELADLGFVK
 NAGRHLCRPCHNREKAKGLGKYICQRCHLVIDEQPLMFRSDAYHPDHFNCTHCGKELTAEARELKGELYC
 LPCHDKMGVPICGACRRPIEGRVVNALGKQWHVEHFVCAKCEKPFLLGHRHYEKKGLAYCETHYNQLFGDV
 CYNCSHVIEGDVVVALNKAWCVSCFSCSTCNSKLTLLKNKFVEFDMKPVCKRCYEKFPLELKKRLKLSL
 TSRKAQPKATDLNSA

TRTRPLEQKLISEEDLAANDILDYKDDDDKV

Chromatograms: https://cdn.origene.com/chromatograms/mk8029_e09.zip

Restriction Sites: SgfI-MluI

Cloning Scheme:



* The last codon before the Stop codon of the ORF

ACCN: NM_017980

ORF Size: 1095 bp

OTI Disclaimer: The molecular sequence of this clone aligns with the gene accession number as a point of reference only. However, individual transcript sequences of the same gene can differ through naturally occurring variations (e.g. polymorphisms), each with its own valid existence. This clone is substantially in agreement with the reference, but a complete review of all prevailing variants is recommended prior to use. [More info](#)

OTI Annotation: This clone was engineered to express the complete ORF with an expression tag. Expression varies depending on the nature of the gene.

Components: The ORF clone is ion-exchange column purified and shipped in a 2D barcoded Matrix tube containing 10ug of transfection-ready, dried plasmid DNA (reconstitute with 100 ul of water).

Reconstitution Method:

1. Centrifuge at 5,000xg for 5min.
2. Carefully open the tube and add 100ul of sterile water to dissolve the DNA.
3. Close the tube and incubate for 10 minutes at room temperature.
4. Briefly vortex the tube and then do a quick spin (less than 5000xg) to concentrate the liquid at the bottom.
5. Store the suspended plasmid at -20°C. The DNA is stable for at least one year from date of shipping when stored at -20°C.

RefSeq: [NM_017980.4](#), [NP_060450.2](#)

RefSeq Size: 2130 bp

RefSeq ORF: 1098 bp

Locus ID: 55679

UniProt ID: [Q7Z4I7](#)

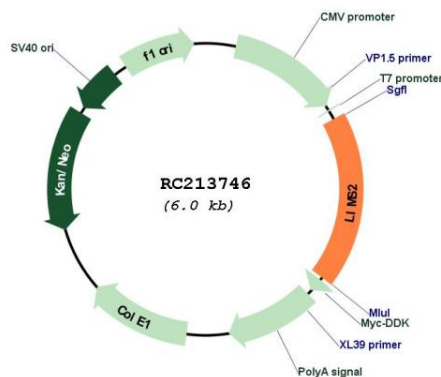
Cytogenetics: 2q14.3

Domains: LIM

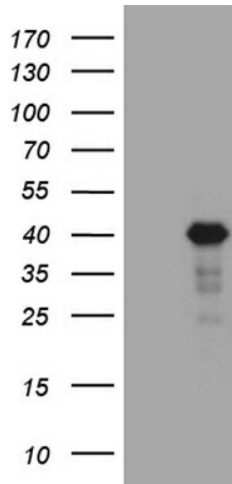
MW: 41.3 kDa

Gene Summary: This gene encodes a member of a small family of focal adhesion proteins which interacts with ILK (integrin-linked kinase), a protein which effects protein-protein interactions with the extracellular matrix. The encoded protein has five LIM domains, each domain forming two zinc fingers, which permit interactions which regulate cell shape and migration. A pseudogene of this gene is located on chromosome 4. Multiple transcript variants encoding different isoforms have been found for this gene. [provided by RefSeq, Nov 2011]

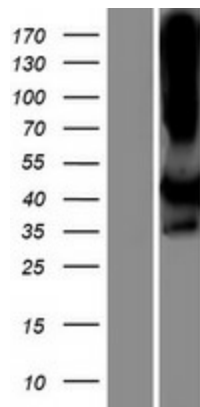
Product images:



Circular map for RC213746



HEK293T cells were transfected with the pCMV6-ENTRY control (Cat# [PS100001], Left lane) or pCMV6-ENTRY LIMS2 (Cat# RC213746, Right lane) cDNA for 48 hrs and lysed. Equivalent amounts of cell lysates (5 ug per lane) were separated by SDS-PAGE and immunoblotted with anti-LIMS2 (Cat# [TA811408])(1:2000). Positive lysates [LY413411] (100ug) and [LC413411] (20ug) can be purchased separately from OriGene.



Western blot validation of overexpression lysate (Cat# [LY413411]) using anti-DDK antibody (Cat# [TA50011-100]). Left: Cell lysates from untransfected HEK293T cells; Right: Cell lysates from HEK293T cells transfected with RC213746 using transfection reagent MegaTran 2.0 (Cat# [TT210002]).